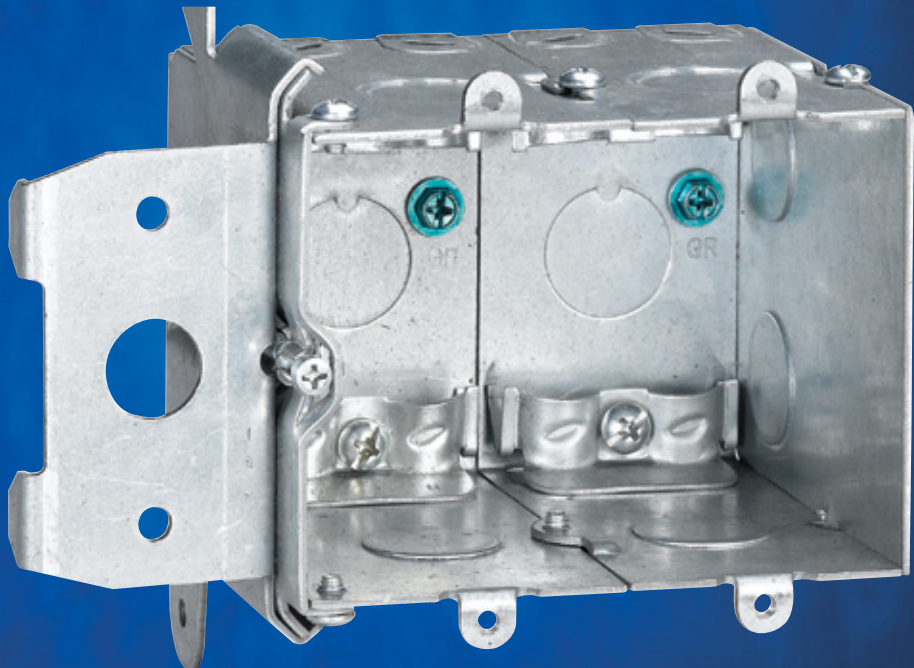
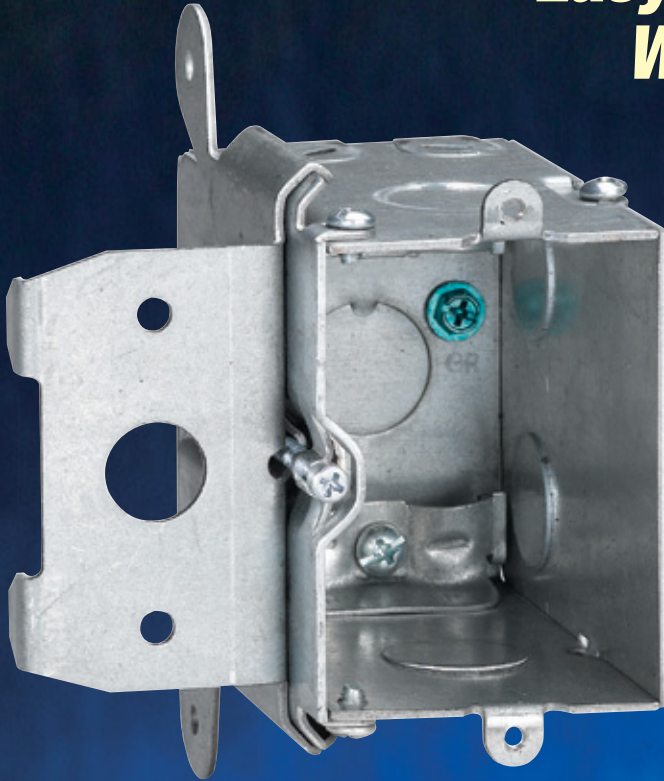


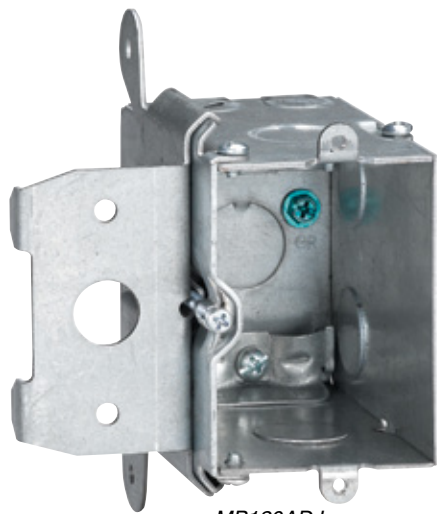
Thomas & Betts

***Easy Depth Adjustment After
Wall Covering Installation***

Steel City[®]

Adjust-A-Box[®]





MB120ADJ

Steel City®



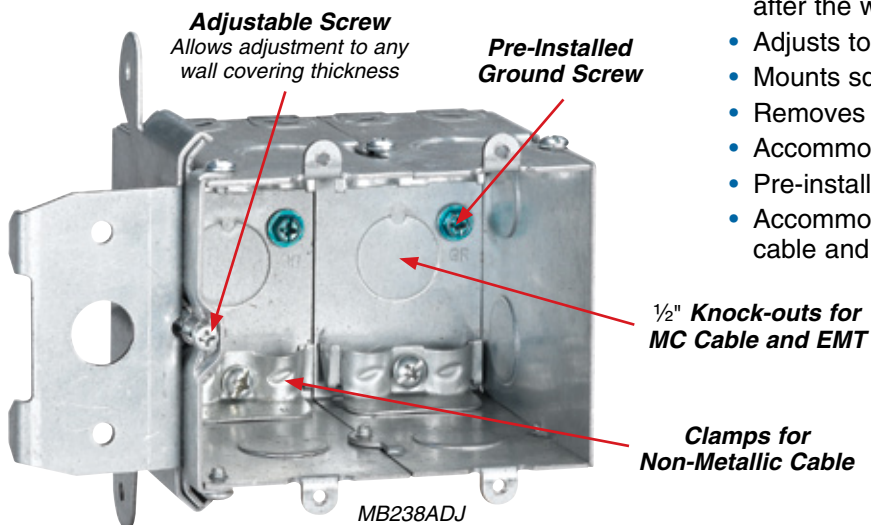
Adjust-A-Box®

Easy Depth Adjustment After Wall Covering Installation

The Adjust-A-Box System adapts to a variety of wall coverings. It's patented design enables the installer to adjust the box to various depths with the turn of a screw.

Features

- Patented design allows for adjustment of depth after the wall covering has been installed
- Adjusts to any wall covering
- Mounts square and secure every time
- Removes easily to enable inner wall access
- Accommodates high- and low-voltage applications
- Pre-installed ground screw
- Accommodates non-metallic cable, flexible metal cable and EMT



Adjustable Screw
Allows adjustment to any wall covering thickness

Pre-Installed Ground Screw

1/2" Knock-outs for MC Cable and EMT

Clamps for Non-Metallic Cable

MB238ADJ

Installation

Screw bracket to stud



Single Gang



Two Gang

Adjust box in or out to any wall thickness



Single Gang



Two Gang



Steel City® Adjust-A-Box®

Cat. Number	Volume (cu. in.)	Description	Knockouts	Size	Std. Ctn. Qty.	Std. Ctn. Wt. (lbs.)	UPC Number
MB120ADJ	20	One Gang Adjustable Wall Box	1/2" (5)	2.20"W x 3.28"H x 3.52"D	18	19.25	034481-19343
MB238ADJ	38	Two Gang Adjustable Wall Box	1/2" (8)	4.01"W x 3.28"H x 3.52"D	12	17.60	034481-19344

www.tnb.com

Thomas & Betts

Please ask your Thomas & Betts sales representative for a complete catalog of quality Thomas & Betts electrical products or visit us at www.tnb.com. For customer service, call 1-800-816-7809. For technical questions, call 1-888-862-3289.

Thomas & Betts Corporation
Electrical Division
8155 T&B Boulevard
Memphis, TN 38125
901-252-5000