

300

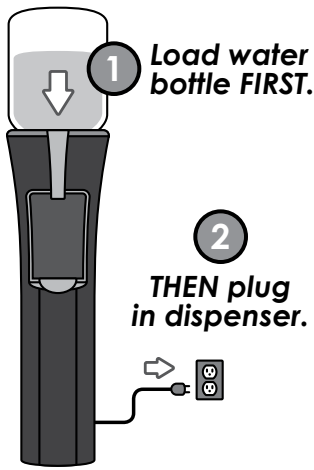
S E R I E S

pure water dispenser™

Water Dispenser Owner's
Manual – 300 Series



IMPORTANT: This manual includes important safety material; please read all instructions before plugging power supply cord into receptacle.



STOP & READ DIRECTIONS before plugging in dispenser.

Read complete **HOW TO INSTALL** instruction sequence before plugging in and turning on dispenser. Failure to follow proper installation instructions may cause damage to water dispenser.

SAFETY PRECAUTIONS

Basic safety precautions should be followed when using electrical appliances, including:

- Only plug in dispenser in the sequence the manual indicates (see HOW TO INSTALL AND USE).
- In accordance with these instructions, the dispenser must be properly located and installed before use (see HOW TO INSTALL AND USE).
- Use only bottled water in the dispenser.
- Keep all gasoline or other flammable vapors and liquids away from this and other appliances.
- Dispenser must be unplugged before cleaning, sanitizing or repairing (see CLEANING AND SANITIZING).
- Wipe up any water spills immediately after loading or unloading water bottles.
- Do not use with water that is microbiologically unsafe or of unknown quality.
- The dispenser heats water to a temperature above 190° F (90° C). Water temperatures above 125° F (52° C) can cause severe burns or death from scalding. Most at risk of being scalded are children, the disabled and the elderly.
- Ensure the dispenser stands upright for 2 hours before loading water bottle, plugging in and turning unit on.
- Always lift dispenser by handle located on rear of unit. Lifting dispenser by faucet will damage the unit.
- Follow proper grounding safety precautions and instructions prior to plugging in the unit (see GROUNDING SAFETY PRECAUTIONS AND INSTRUCTIONS).
- Supervise children when using the dispenser (see CHILD SAFETY).

GROUNDING SAFETY PRECAUTIONS AND INSTRUCTIONS

WARNING: The dispenser must be grounded – if the appliance is improperly grounded, the result could be electric shock.

Ensure that the available power supply matches the dispenser's voltage specifications indicated on the nameplate label (located at the rear). Please ensure that dispenser is set up so access to the power outlet and plug is unobstructed.

IMPORTANT: To provide additional protection from the risk of shock, the dispenser **MUST** be connected to a ground fault circuit interrupter (GFCI) outlet at all times. Use of an extension cord will void any warranties. See warranty document for complete terms and conditions.

CHILD SAFETY

CAUTION: Supervise children when using the dispenser.

The hot dispenser faucet is equipped with a child safeguard that reduces the risk of hot water being dispensed accidentally or by small children. To dispense hot water, press and hold the HOT water select button for approximately 3 seconds or until light turns red. Then press the WATER dispenser button. Do not allow children to hang, climb or stand on the dispenser; the dispenser could fall over and the child could be injured.



RECEIVING

Inspect the dispenser box carefully for any evidence of shipping or handling damage before signing to receive goods. In case of shipping damage, claims should be filed immediately with the carrier.

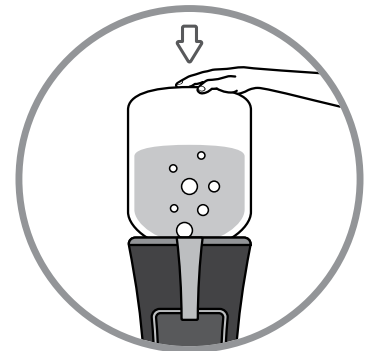
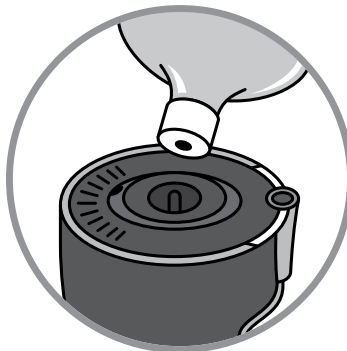
HOW TO INSTALL AND USE

WARNING: Read through every step in HOW TO INSTALL AND USE before plugging in or turning unit on.

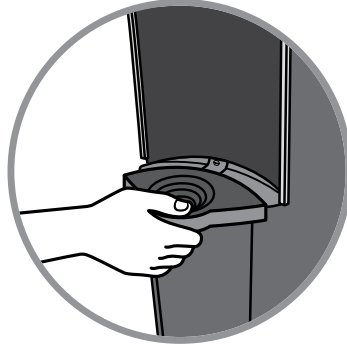
1. Keep dispenser unplugged and in the off position until the water bottle has been loaded and water flows through the faucet.
2. Ensure dispenser stands upright for a minimum of 2 hours before loading water bottle, plugging in and turning on dispenser.
3. Place dispenser a minimum of 2 inches away from the wall to ensure ventilation.
4. Install dispenser on a level floor strong enough to support it when fully loaded.
5. Do not install dispenser where it will be subject to direct sunlight, heat or moisture.
6. Do not install dispenser where the temperature will go below 50° F (10° C) or above 100° F (38° C).
7. Wipe down the water bottle cap and neck to ensure there is no debris.
8. Remove tamper-evident seal from plastic bottle cap. Do NOT remove plastic cap if using the NO-SPILL Water Bottle System.



9. Load water bottle by lifting and inserting it onto the probe, ensuring bottle is fully aligned with the dispenser and centered over the probe. Be certain fingers and other body parts are clear of underside of bottle. Apply slight pressure until the plug inside the cap pushes in and the bottle is seated. Water will begin to flow into the tank causing air bubbles in the bottle.



10. Plug in dispenser using a GFCI outlet.
11. Press COLD water dispenser button for one second. Top of dispenser button will turn blue. Allow water to flow through.
12. Press and hold HOT water select button for approximately 3 seconds. Top of dispenser button will turn red. Press and hold WATER dispenser button to purge air from hot tank until water starts to flow from dispenser nozzle. Release dispenser button for approximately 7 seconds and press again for water flow and final purge of air from hot tank.
13. Turn on the hot tank heater switch located at the rear of the dispenser. When the switch is turned on, a red light will illuminate. When the hot tank reaches operating temperature, the red light will go off.
14. Install drip tray.



15. Dispense water.

NOTE: It takes approximately 1 hour for water in the dispenser to become hot.

CLEANING AND SANITIZING

WARNING: Always unplug dispenser before cleaning.

IMPORTANT: It is recommended that the dispenser be cleaned two times a year.

CLEANING OUTSIDE OF DISPENSER

Wipe dispenser body, bottle receptacle, tank and spout with a cloth and warm, soapy water. Then rinse by wiping down with clean water before drying.

CLEANING DRIP TRAY AND GRILL

The dispenser drip tray is not self-draining and should be cleaned regularly. To reduce water spotting, the tray should be emptied, cleaned with mild soap or on top rack of dishwasher, and wiped dry.

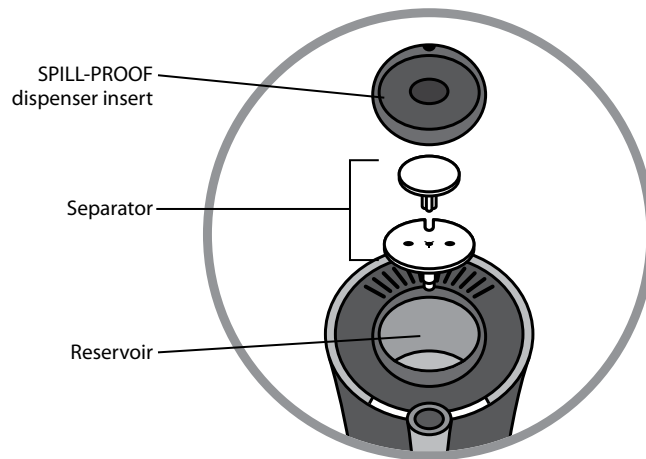
CLEANING AND SANITIZING RESERVOIR

1. Before cleaning, place switch located on rear of dispenser to the off position and unplug unit.
2. Let dispenser stand for **one hour** before cleaning to allow hot tank to cool.
3. Remove water bottle and drain water reservoir by dispensing water through the spout.
4. Remove SPILL-PROOF dispenser insert.



NOTE: SPILL-PROOF dispenser insert is designed to fit tightly into reservoir and will require force to remove.

5. Remove separator by pulling straight out.



6. Clean SPILL-PROOF dispenser insert and separator with warm, soapy water or on top rack of dishwasher.
7. Allow these parts to dry thoroughly.
8. Wipe inside of reservoir with a soft, clean rag.



9. Place separator back in dispenser.
10. Replace SPILL-PROOF dispenser insert.
11. Install a full water bottle on dispenser (see HOW TO INSTALL AND USE).
12. Plug dispenser into the power supply using a GFCI outlet. Turn on the hot tank heater switch located at the rear of dispenser.
13. Dispense water.

CLEANING CABINET

1. Unplug dispenser from power outlet prior to cleaning cabinet.
2. All plastic parts can be cleaned using a cloth and warm, soapy water. Rinse with clean water. Never use scouring pads, steel wool or scouring powder.
3. Condenser tubes located on back of dispenser should be vacuumed.

TROUBLESHOOTING

WARNING: Always turn off dispenser and unplug from power outlet before inspecting or starting any maintenance.

WATER IS LEAKING

- Bottle may have a leak. Remove and install new bottle.

WATER DOES NOT FLOW FROM DISPENSER

- Make sure bottle is not empty; if empty, replace bottle.
- Make sure to press water select button prior to pressing water dispenser button (see HOW TO INSTALL AND USE).
- Inspect to see if there is a pinhole in the bottle; if so, replace bottle.
- Check valve on SPILL-PROOF dispenser insert; make sure it is allowing air into the reservoir.

WATER TASTES BAD

- Dispenser may need to be cleaned (see CLEANING AND SANITIZING).

WATER NOT HOT OR COLD ENOUGH

- Check to make sure dispenser is plugged in and the switch is turned on.
- A fuse may be blown or the circuit breaker may be tripped; if needed, replace fuse or reset breaker.
- Dispenser may be placed in direct sunlight or may be too close to a heat source; try moving dispenser into a cool shaded area.
- Check cold thermostat setting: turn 1/4 clockwise for cooler water.

DISPENSER IS NOISY

- Make sure the dispenser is on a level floor or counter strong enough to support it when fully loaded.
- It is normal for the bottle to make a gurgling noise as water fills the tank.
- It is normal for the dispenser or water bottle to shake when the cooling system cycles off.
- Some operating noise from the compressor and hot tank is normal.

DISPENSER DISPLAY LIGHTS ARE NOT LIGHTED AND SYSTEM IS NOT OPERATING (LIMITED TO MODELS WITH DISPLAY PANEL)

- Moisture may have contacted internal display boards.
- Unplug for 2 hours and restart by plugging in dispenser using a GFCI outlet.

PARTICLES FLOATING IN WATER

- Dispenser may need to be cleaned (see CLEANING AND SANITIZING).
- Always ensure label is fully removed from bottle cap before placing on dispenser.
- Call your water service provider if problem persists.

DISPENSER NEEDS TO BE STORED

- Always drain water completely from dispenser before shipping or storing.

TO PROPERLY DISPOSE OF YOUR DISPENSER

- Your old dispenser may have used a regulated refrigerant in its cooling system. These refrigerants are believed to harm stratospheric ozone. If you are throwing away your old dispenser, make sure the refrigerant is removed and recovered for proper disposal by an EPA-certified technician. If you intentionally release this refrigerant, you can be subject to fines and imprisonment under provisions of environmental legislation.

IMPORTANT: The customer acknowledges that water, like other liquids, can cause damage to surfaces. The customer takes full responsibility for placing the dispenser within a residence or business and acknowledges that failure to address drips, leaks or spillages is at the customer's risk.

WARNING: The Limited 1-Year Warranty and Underwriters' Laboratory and CE listings for the dispensers are invalidated if any alterations, modifications, or use or misuse in combination with any other machines or devices is deemed to be the source of any claim. See warranty document for complete terms and conditions. DS Waters of America, Inc. accepts no liability (including for bodily injury) resulting from any alterations, misuse, neglect, accidents, improper installations or repairs. The appliance is not intended for use by persons (including children) with reduced physical, sensory or mental capabilities, or lack of experience and knowledge without supervision by a person responsible for their safety.