

# Kawasaki

**1/4 in. AIR GRINDER**

**PNEUMATIC TOOL INSTRUCTION MANUAL**

**MANUAL DE INSTRUCCIONES DE LA HERRAMIENTA  
NEUMÁTICA TRITURADOR DE IMPACTO DE AIRE DE  
6,35 mm (1/4 pulg) KAWASAKI™**



**IMPORTADO POR:**

IMPORTADORA PRIMEX, S.A. DE C.V.  
BLVD. MAGNOCENTRO No. 4,  
SAN FERNANDO LA HERRADURA,  
HUIXQUILUCAN, ESTADO DE MEXICO,  
C.P. 52765 R.F.C. IPR-930907-S70  
TEL. 5-5246-5500



87-1904-60957

**PRODUCTO CON LICENCIA OFICIAL**

KAWASAKI™ IS A TRADEMARK LICENSED BY KAWASAKI™  
MOTORS CORP., U.S.A., WHICH DOES NOT MANUFACTURE OR  
DISTRIBUTE THIS PRODUCT. CONSUMER INQUIRES SHOULD BE  
DIRECTED TO:

KAWASAKI™ ES UNA MARCA REGISTRADA BAJO LICENCIA DE  
KAWASAKI™ MOTORS CORP., E.U.A., EL CUAL NO FABRICA O DIS-  
TRIBUYE ESTE PRODUCTO. CONSULTAS DEL CONSUMIDOR DEBEN  
DE SER DIRIGIDOS A

©COPYRIGHT 2007 ALLTRADE TOOLS, LLC.

1431 VIA PLATA

LONG BEACH, CA 90810-1462 EUA

691314 - 1/4 in. Air Grinder, 6,35 mm (1/4 in) Trituradora de  
Aire\_Rev 12/10/07

Printed in China  
Impreso en China

**LEASE EL INSTRUCTIVO ANTES DE USAR**

THIS MANUAL CONTAINS IMPORTANT INFORMATION REGARDING SAFETY, OPERATION, MAINTENANCE AND STORAGE OF THIS PRODUCT. BEFORE USE, READ CAREFULLY AND UNDERSTAND ALL CAUTIONS, WARNINGS, INSTRUCTIONS AND PRODUCT LABELS. FAILURE TO DO SO COULD RESULT IN SERIOUS PERSONAL INJURY AND/OR PROPERTY DAMAGE.

ÉSTE MANUAL CONTIENE IMPORTANTE INFORMACIÓN CON RESPECTO A LA SEGURIDAD, OPERACIÓN, MANTENIMIENTO Y ALMACENAJE DE ÉSTE PRODUCTO. ANTES DE USARLO, LEA CUIDADOSAMENTE Y COMPRENDA TODAS LAS PRECAUCIONES, ADVERTENCIAS, INSTRUCCIONES Y ETIQUETAS DEL PRODUCTO. EL NO LLEVARLO ACABO PODRIA RESULTAR EN DAÑOS PERSONALES SERIOS Y/O DAÑOS DE PROPIEDAD.

## TABLE OF CONTENTS

|  |     |
|--|-----|
| CONGRATULATIONS! .....                           | 1   |
| INTENDED USE .....                               | 1   |
| <b>SECTION ONE</b>                               |     |
| GENERAL SAFETY RULES .....                       | 1-2 |
| RECOGNIZE SAFETY SYMBOLS, WORDS AND LABELS ..... | 2   |
| IMPORTANT SAFEGUARDS .....                       | 3   |
| SERVICE .....                                    | 3   |
| <b>SECTION TWO</b>                               |     |
| SPECIFIC SAFETY RULES AND/OR SYMBOLS .....       | 3   |
| IMPORTANT SAFETY RULES FOR AIR TOOLS .....       | 4   |
| <b>SECTION THREE</b>                             |     |
| FUNCTIONAL DESCRIPTION .....                     | 4   |
| ASSEMBLY .....                                   | 5   |
| OPERATION .....                                  | 5   |
| <b>SECTION FOUR</b>                              |     |
| MAINTENANCE .....                                | 6   |
| ACCESSORIES .....                                | 6   |
| TROUBLESHOOTING .....                            | 6   |
| PARTS DIAGRAM .....                              | 7   |
| PARTS LIST .....                                 | 7-8 |
| SPECIFICATIONS .....                             | 8   |

## CONGRATULATIONS!

Thanks for choosing this product. At Alltrade, our aim is to provide you with quality products at an affordable price, and we want you to be totally satisfied with your product.

## INTENDED USE

This tool is intended for consumer use only.

## GENERAL SAFETY RULES

**⚠ WARNING** READ AND UNDERSTAND ALL INSTRUCTIONS. Failure to follow all instructions listed may result in serious personal injury.

SAVE THESE INSTRUCTIONS FOR FUTURE REFERENCE.

## RECOGNIZE SAFETY SYMBOLS, WORDS AND LABELS

The safety instructions provided in this manual are not intended to cover all possible conditions and practices that may occur when operating, maintaining and cleaning tools.

Always use common sense and pay particular attention to all the **DANGER**, **WARNING**, **CAUTION** and **NOTE** statements of this manual.



This is the safety alert symbol. It is used to alert you to potential personal injury hazards. Obey all safety messages that follow this symbol to avoid possible injury or death.

**⚠ DANGER**

**DANGER** indicates an imminently hazardous situation which, if not avoided, will result in death or serious injury.

**⚠ WARNING**

**WARNING** indicates a potentially hazardous situation which, if not avoided, could result in death or serious injury.

**⚠ CAUTION**

**CAUTION** indicates a potentially hazardous situation which, if not avoided, may result in minor or moderate injury.

**CAUTION**

**CAUTION** used without the safety alert symbol indicates a potentially hazardous situation which, if not avoided, may result in property damage.

**NOTE**

**NOTE** provides additional information that is useful for proper use and maintenance of this tool. If a **NOTE** is indicated make sure it is fully understood.

## IMPORTANT SAFEGUARDS

### **⚠ DANGER**

**WARNING:** Some dust created by power sanding, sawing, grinding, drilling and other construction activities contains chemicals known to the State of California to cause cancer, birth defects or other reproductive harm.

Some examples of these chemicals are:

- Lead from lead-based paints.
- Crystalline silica from bricks and cement and other masonry products, and arsenic and chromium from chemically-treated lumber.

Your risk from these exposures varies, depending on how often you do this type of work. To reduce your exposure to these chemicals: work in a well ventilated area, and work with approved safety equipment, such as dust masks that are specially designed to filter out microscopic particles.

## SERVICE

### **⚠ CAUTION**

**Tool service must be performed only by qualified repair personnel.** Service or maintenance by unqualified personnel could result in a risk of injury.

**When servicing a tool, use only identical replacement parts. Follow instructions in the Maintenance section of this manual.** Use of unauthorized parts or failure to follow Maintenance Instructions may create a risk of shock or injury.

## SPECIFIC SAFETY RULES AND/OR SYMBOLS

### **⚠ CAUTION**

**Maximum operating pressure is 90 PSI. Never use higher air pressure to increase the output of the Air Grinder. Overloading will drastically shorten the life of all internal parts.**

**Disconnect Air Grinder from power air supply before servicing or changing accessories.**

## IMPORTANT SAFETY RULES FOR AIR TOOLS

### **⚠ CAUTION**

**BEFORE OPERATING YOUR AIR TOOL, READ THE FOLLOWING INFORMATION:**

Always inspect, maintain and operate in accordance with ANSI safety code for portable air tools (ANSI B186.1) and other local safety codes and regulations.

Do not operate this tool over 90 PSI air pressure at the tool.

Always wear safety goggles when operating this tool.

Always disconnect this tool from the air supply before installing, adjusting or removing any accessory in this tool, or before performing maintenance.

Always use a dust mask in dusty conditions.

User and bystanders must wear suitable hearing protection when this tool is in use.

Do not carry any air tool by the hose. Keep air hose away from heat and sharp objects.

Continuous use of vibrating air tools by susceptible users may cause damage to hands.

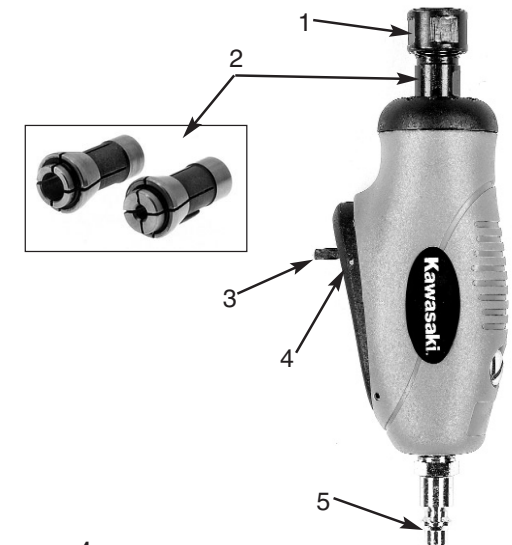
Always wear gloves and protective clothing to help prevent injury from flying particles.

Always lubricate and maintain tool in safe operating conditions.

## FUNCTIONAL DESCRIPTION

### CONTROLS AND COMPONENTS:

1. Collet Nut
2. Collet
3. Safety Lock
4. Trigger Lever
5. Air Inlet



## ASSEMBLY

### ⚠ WARNING

Always disconnect this tool from the air supply before installing, adjusting or removing any accessory in this tool, or before performing maintenance. Failure to do so could result in injury.

Check the speed rating on all accessories. Accessories must never be run at a higher speed than they were designed to handle.

1. Remove collet nut from grinding tool.
2. Insert the collet, making sure that it is the correct size for your accessory, into the grinding tool.
3. Replace the collet nut on the grinding tool.
4. Insert accessory through the collet nut and into the collet, pushing the accessory until it stops, then pull it out approximately 1/16 In. (1.59 mm)



## OPERATION

1. Select proper accessory to match application.
2. Be sure accessory is properly tightened (see assembly instructions).
3. Depress safety lock.
4. Squeeze trigger lever to control speed.



5. Tighten collet nut using the spanner wrenches provided.
6. Connect tool to air source by connecting air hose to air inlet.

## MAINTENANCE

### AIR SUPPLY

Always use clean dry air as excessive moisture will lower the available torque and rust the interior moving parts. Make sure all hoses and fittings are of the recommended size and be sure the units are not used with less than or more than the recommended pressure at the tool! (90 PSI)

### LUBRICATION

Proper lubrication of this air tool is critical to the operation and life of the unit. Units can be severely damaged or have excessive wear placed on working parts if not lubricated. We recommend the use of Marvel Mystery Oil which is available at most auto parts locations. The tool should be lubricated each time it is used. During daily prolonged use, lube heavily 3 or 4 times during the day.

### MAINTENANCE

Daily – before putting the tool in operation, disconnect air hose and pour about one tablespoonful of Marvel Mystery Oil into tool air inlet. Blow out air line to clear it of accumulated dirt and moisture. Connect tool and operate tool to allow oil to be carried to the interior of the tool.

## ACCESSORIES

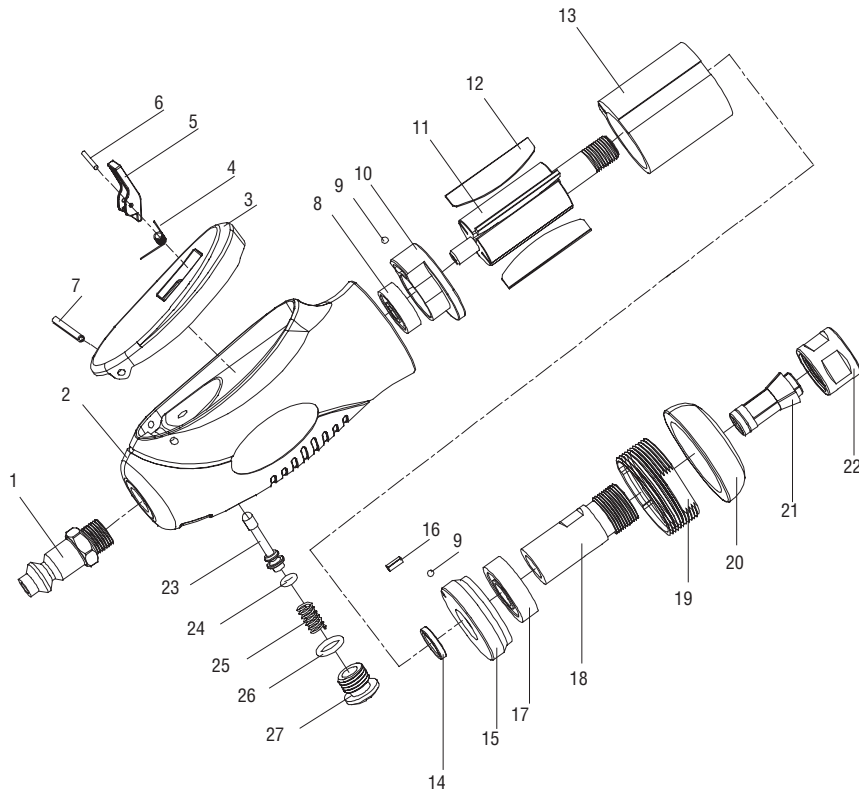
Use only accessories that are recommended by the manufacturer for your model. Accessories that may be suitable for one tool may become hazardous when used on another tool.

## TROUBLESHOOTING

Most minor problems can be resolved quickly and easily using the troubleshooting table below.

| PROBLEM            | POSSIBLE CAUSE                        | SOLUTION  |
|--------------------|---------------------------------------|---|
| Unit will not work | Plugged air inlets<br>Interior rusted | Remove fitting and clean<br>Disassemble, clean, lube and reassemble                       |
| Unit lacks power   | Low air supply<br>Lack of lubrication | Check hoses, tanks, etc.<br>Lube properly and retry                                       |
| Internal parts     | Dirty or gummed<br>Components worn    | Disassemble, clean, lube<br>Disassemble, determine parts requiring replacement and repair |

## PARTS DIAGRAM



## PARTS LIST

| NO. | PART NO.       | DESCRIPTION          | QTY. |
|-----|----------------|----------------------|------|
| 1   | XP-1111-01-01B | Male Plug            | 1    |
| 2   | XPC-DG14-02    | Housing              | 1    |
| 3   | XPC-DG14-03    | Trigger              | 1    |
| 4   | XPC-DG14-04    | Spring               | 1    |
| 5   | XPC-DG14-05    | Push Button          | 1    |
| 6   | XPC-DG14-06    | Pin (2*27 8)         | 1    |
| 7   | XP-SP-25300    | Pin (2 5*30)         | 1    |
| 8   | XP-BB-06261    | Ball Bearing (626ZZ) | 1    |
| 9   | XP-SB-004      | Steel Ball 2 5       | 2    |

## PARTS LIST

| NO. | PART NO.     | DESCRIPTION           | QTY. |
|-----|--------------|-----------------------|------|
| 10  | XP-DG-14-14  | End Plate             | 1    |
| 11  | XP-DG-14-12  | Rotor                 | 1    |
| 12  | XP-DG-14-13  | Rotor Blade           | 4    |
| 13  | XP-DG-14-11  | Cylinder              | 1    |
| 14  | XP-DG-14-07  | Washer                | 1    |
| 15  | XP-DG-14-09  | Front End Plate       | 1    |
| 16  | XP-SP-25060  | Pin (2 5*6)           | 1    |
| 17  | XP-BB-60002  | Ball Bearing (6000ZZ) | 1    |
| 18  | XP-DG-140-6  | Spindle               | 1    |
| 19  | XPC-DG14-19  | Retainer              | 1    |
| 20  | XPC-DG14-20  | Housing Cap           | 1    |
| 20A | XP-DG140-3   | Collet (6mm)          | 1    |
| 21  | XP-DG140-3A  | Collet 1/4 in.        | 1    |
| 22  | XP-DG-14-02  | Collet Nut            | 1    |
| 23  | XPC-DG1423   | Valve Stem            | 1    |
| 24  | XP-ORP-0032  | O Ring (3*2)          | 1    |
| 25  | XP-AR38-02   | Spring                | 1    |
| 26  | XP-ORP-0080  | O Ring (P8)           | 1    |
| 27  | XP-AR38PM-02 | Throttle Plug         | 1    |

## SPECIFICATIONS

### SPECIFICATIONS

|                          |                       |
|--------------------------|-----------------------|
| No Load Speed            | 17,000 RPM            |
| Air Inlet                | 1/4 in. (6.35 mm) NPT |
| Air Consumption          | 4-9 CFM               |
| Recommended Air Pressure | 90 PSI                |
| Suggested Air Hose Size  | 3/8 in. (9.52 mm)     |