

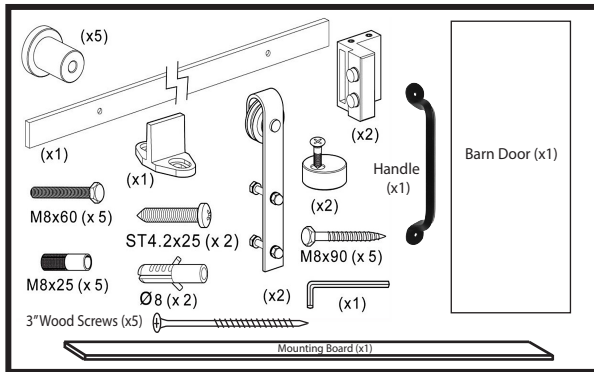
IMPORTANT BEFORE YOU BEGIN

MAKE SURE ALL CONTENTS OF THIS BOX MATCH THE DIAGRAM BELOW.

DO NOT RETURN DOOR TO STORE FOR MISSING PARTS.

SHOULD YOU NEED ANY PARTS ASSISTANCE, PLEASE CALL 1-800-617-8586.

SERVICE HOURS: WEEKDAYS 8:00 am - 5:00 pm CST



Box Contents:

- 1 Barn Door
- 1 Handle (with 2 screws)
- 1 Mounting Board
- 1 Rail
- 2 Roller Straps (with bolts, washers and nuts) **Note: 2 sets of roller strap bolts provided for use with 1-3/4" or 1-3/8" (most common size) door thickness**
- 2 Stops
- 1 Door Guide (with 2 anchors and screws)
- 5 Spacers
- 5 Lag Bolts
- 5 3" Wood Screws
- 5 Bolts (with 5 washers and anchors)
- 2 Anti-jump Blocks (with 2 screws)

CAUTION If installing on a standard drywall surface, DO NOT attempt to install the rail directly to the drywall as this may not support the weight of the hardware and mounted door.

DRYWALL INSTALLATION

Step 1. Door Preparation **▲ See back page for door finishing information.**

Position each strap to the front side of the door and center to the stile or a minimum of 2" from the edge of the door. Cut a piece of cardboard 2-1/4" high and place between the wheel (inner groove) and the top of the door to correctly position the height of the straps. Mark holes with a pencil and pre-drill 3/8" holes, then secure into place. Repeat for second strap.

Step 2. Door Preparation

Position each anti-jump block at least 1" from the edge of the straps. Tighten slightly to secure in place..

Step 3. Wall & Mounting Board Preparation - Drywall

A. The solid wood Mounting Board (included in Barn Door Kit) is required to be mounted to the drywall before proceeding with the rail installation. Position the Mounting Board by measuring up from the door height (H) + 1-3/4" to the center of the track/Mounting Board. Ensure there is a gap of 3/8" at the bottom. Lastly, ensure the Mounting Board is level and leave a minimum of 2" from the end of the Mounting Board to the side of the opening (as shown). (Note: If installing with an opening for 80" standard door size with low ceiling, you may need to remove the top trim and cut the side trim horizontally along the height of the opening.)

B. Locate the wall stud locations along entire length of Mounting Board above door, mark stud locations on Mounting Board. Drill 1/8" pilot holes in Mounting Board.

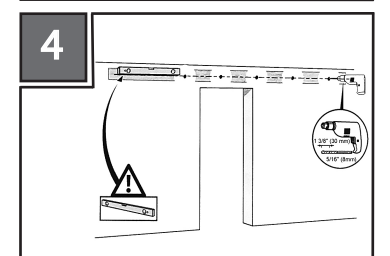
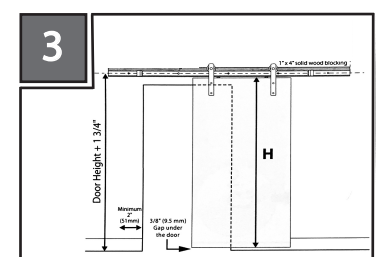
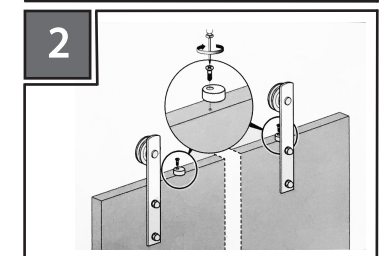
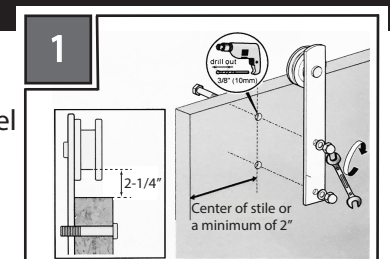
C. Install the Mounting Board using 3" wood screws (included in kit) into the marked stud locations.

Step 4. Wall Preparation - Drywall

Position the rail on top of the Trim Board ensuring levelness, mark the holes using a pencil and pre-drill 5/16" holes into the Mounting Board.

Step 5. Rail Installation - Drywall

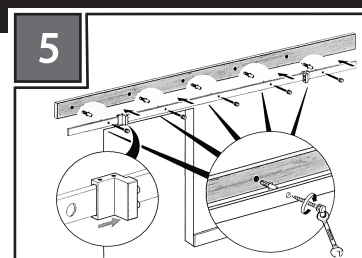
Install rail centered onto the Mounting Board and wall using the provided lag bolts. Align each lag bolt and spacer to the rail holes, secure with a wrench. (Note: Wide end of round spacer goes toward wall)



DRYWALL INSTALLATION

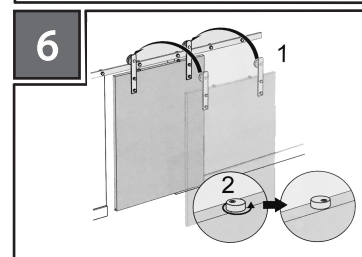
Step 5. Rail Installation - Drywall

Install rail centered onto the Mounting Board and wall using the provided lag bolts. Align each lag bolt and spacer to the rail holes, secure with a wrench. (Note: Wide end of round spacer goes toward wall)



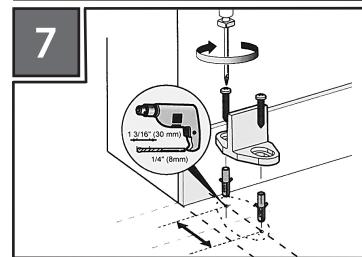
Step 6. Hanging the Door

Position the assembled door onto the secured rail and tighten each anti-jump block. Ensure all parts are operating correctly by sliding the door side to side.



Step 7. Floor-Mounted Door Guide Installation

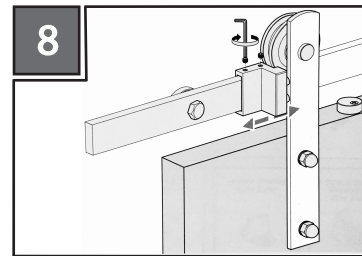
Once the door is plumb, position the floor-mounted door guide inside the mortise at bottom of door close to the opening. Slide the door side to side to ensure functionality for final placement then mark holes with a pencil and predrill 1/4" holes. If drilling into a concrete floor, use the provided anchors.



Step 8. Stopper Installation

A. Slide the door closed to correctly position the stoppers. Using the provided allen key, tighten into position to complete the installation of the Barn Door Kit.

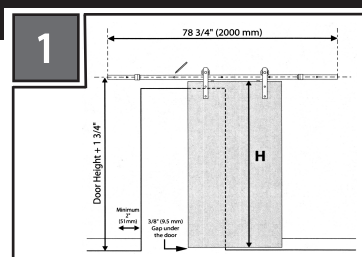
B. Depending on your door size and wall opening, you may need to mount inside the first rail mounting lag bolt. You may need to remove the lag bolt to move the stopper to the correct position.



CONCRETE INSTALLATION

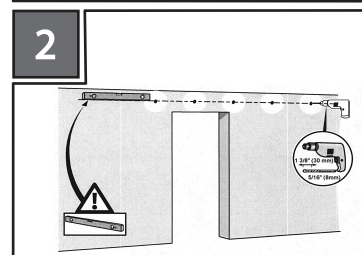
Step 1. Wall Preparation - Concrete

Position the rail by measuring up from the door height (H) + 1-3/4" to the center of the track to the center of the track. Ensure there is a gap of 3/8" at the bottom. Lastly, ensure the rail is level and leave a minimum of 2" from the end of the rail to the side of the opening (as shown). If installing with an opening for 80" standard door size, remove the top trim and cut the sidetrim horizontally along the height of the opening. PPP



Step 2. Wall Preparation - Concrete

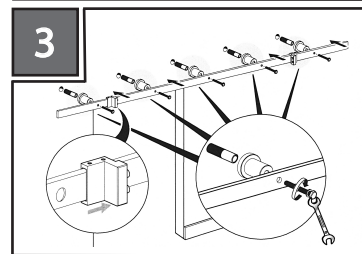
Position the rail in place ensuring that it is level, mark the holes in the rail with a pencil and pre-drill 5/16" hole into the concrete.



Step 3. Rail Installation

When installing directly into concrete, insert using the provided anchors and carriage bolts (with washers). Make sure to un-screw to separate the carriage bolt and anchor to install correctly, securing with a wrench. Be sure to install the stoppers either side of the rail inside the first hole.

*** To complete the concrete installation, continue with steps 6 thru 8 under drywall installation above.**



DOOR FINISHING INFORMATION

A. **For wood unfinished stain ready doors** - Use a high quality stain and/or clear coat product. Follow the manufacturers instructions. Be sure to finish all six sides of door. *(Ensure top and bottom are sealed/finished)

B. **For the White V-Groove and White Stacked style doors** - Use a quality paint to finish the door following the manufacturers instructions. These door styles come primed only and require painting.