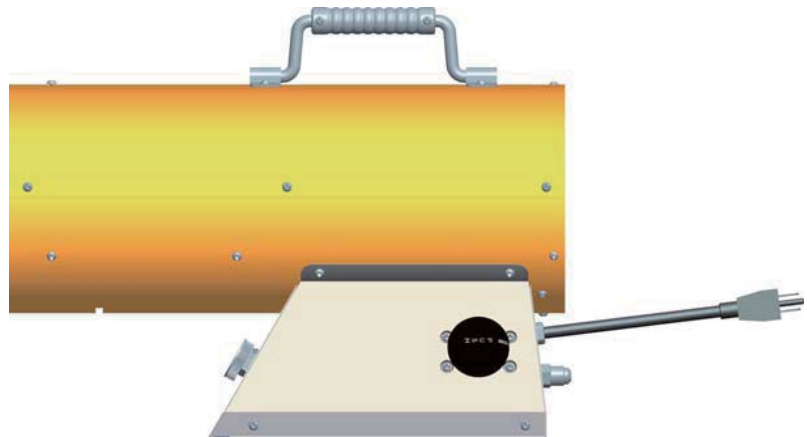




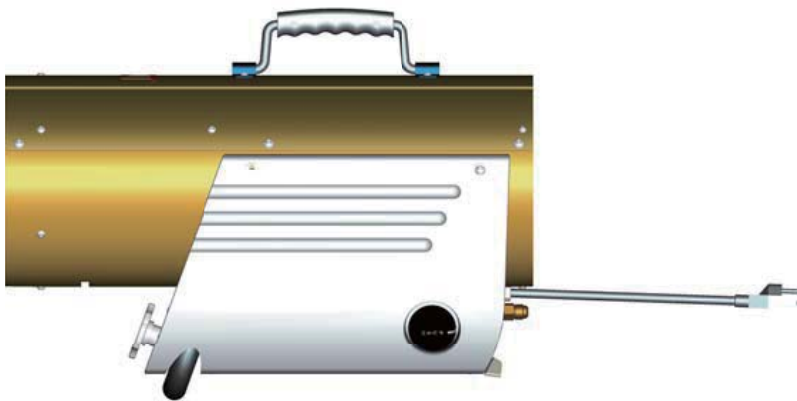
## FORCED AIR PROPANE HEATER

Model#: SRCH11011 (35,000~55,000Btu/hr)

Model#: SRCH11033 (85,000~125,000Btu/hr)



Model#: SRCH11011



Model#: SRCH11033



Intertek  
3194320

 **WARNING: NOT FOR HOME OR RECREATIONAL VEHICLE USE.**

## Owner's Manual

Standard: Conforms To ANSI Z83.7b-2009/CSA 2.14b-2009

Gas-Fired Construction Heaters

## **SAFETY INFORMATION**

**IMPORTANT: READ AND UNDERSTAND THIS MANUAL BEFORE ASSEMBLING, STARTING OR SERVICING HEATER. IMPROPER USE OF HEATER CAN CAUSE SERIOUS INJURY. KEEP THIS MANUAL FOR FUTURE REFERENCE.**



### **GENERAL HAZARD WARNING:**

**FAILURE TO COMPLY WITH THE PRECAUTIONS AND INSTRUCTIONS PROVIDED WITH THIS HEATER, CAN RESULT IN DEATH, SERIOUS BODILY INJURY AND PROPERTY LOSS OR DAMAGE FROM HAZARDS OF FIRE, EXPLOSION, BURN, ASPHYXIATION, CARBON MONOXIDE POISONING, AND/OR ELECTRICAL SHOCK.**

**ONLY PERSONS WHO CAN UNDERSTAND AND FOLLOW THE INSTRUCTIONS SHOULD USE OR SERVICE THIS HEATER.**

**IF YOU NEED ASSISTANCE OR HEATER INFORMATION SUCH AS AN INSTRUCTIONS MANUAL, LABELS, ETC. CONTACT THE MANUFACTURER.**



**WARNING: THIS PRODUCT CONTAINS AND/OR GENERATES CHEMICALS KNOWN TO THE STATE OF CALIFORNIA TO CAUSE CANCER OR BIRTH DEFECTS OR OTHER REPRODUCTIVE HARM.**



**WARNING: FIRE, BURN, INHALATION AND EXPLOSION HAZARD. KEEP SOLID COMBUSTIBLES, SUCH AS BUILDING MATERIALS, PAPER OR CARDBOARD, A SAFE DISTANCE AWAY FROM THE HEATER AS RECOMMENDED BY THE INSTRUCTIONS. NEVER USE THE HEATER IN SPACES WHICH DO OR MAY CONTAIN VOLATILE OR AIRBORNE COMBUSTIBLES OR PRODUCTS SUCH AS GASOLINE, SOLVENTS, PAINT THINNER, DUST PARTICLES OR UNKNOWN CHEMICALS.**

# TABLE OF CONTENTS

Safety Information.....	2
Unpacking.....	5
Specifications.....	6
Wiring Diagram .....	7
Propane Supply .....	8
Illustrated Parts Breakdown (SRCH11011) .....	9
Parts List (SRCH11011) .....	10
Illustrated Parts Breakdown (SRCH11033) .....	11
Parts List (SRCH11033) .....	12
Installation.....	13
Safety Check.....	17
Ventilation / Operation.....	18
Operation (SRCH11011) .....	19
Operation (SRCH11033).....	20
Storage.....	21
Maintenance.....	22
Troubleshooting.....	23
Replacement Parts.....	24
One-year limited warranty.....	25

## SAFETY INFORMATION CONTINUED

The heater is designed for use as a construction heater in accordance with ANS Z83.7b-2009/CSA2.14b-2009. Other standards govern the use of fuel gases and heating products for specific uses. Your local authority can advise you about these. The primary purpose of construction heaters is to provide temporary heating of buildings under construction, alteration or repair. Properly used, the heater provides safe economical heating. Products of combustion are vented into the area being heated. We cannot foresee every use which may be made of our heaters. **Check with your local fire safety authority if you have questions about heater use.**

Other standards govern the use of fuel gases and heat producing products for specific uses. Your local authorities can advise you about these.

### **Carbon Monoxide Poisoning:**

Some areas can be affected by carbon monoxide more than others. Early signs of carbon monoxide poisoning resemble the flu, with headaches, dizziness and/or nausea. If you have these signs, the heater may not be working properly.

For proper ventilation to be used in areas with.

### **Propane Gas:**

Propane gas is odorless. An odor making agent is added to propane gas. The odor helps you detect a propane gas leak. However, the odor added to propane gas can fade. Propane gas may be present even though no odor exists.

Make certain you read and understand all warnings. Keep this manual for reference. It is your guide to safe and proper operation of this heater.

1. The installation must conform with local codes or, in the absence of local codes, with the Standard for the Storage and Handling of Liquefied Petroleum Gases, ANSI/NFPA 58 and the Natural Gas and Propane Installation Code, CSA B149.1.
2. Use only the electrical voltage and frequency specified on model plate. The electrical connections and grounding of the heater shall follow the National Electric Code, ANSI/NFPA 70 or the Canadian Electrical Code, Part 1.
3. Electrical Grounding Instructions - This appliance is equipped with a three-prong (grounding) plug for your protection against shock hazard and should be plugged directly into a properly grounded three-prong receptacle or extension cord.
4. The hose assembly shall be visually inspected prior to each use of the heater. If it is evident there is excessive abrasion or wear, or the hose is cut, it must be replaced prior to the heater being put into operation. The replacement hose assembly shall be that specified by the manufacturer.
5. Use only propane gas set up for vapor withdrawal.
6. SRCH11011 for indoor and outdoor use. SRCH11033 for indoor use only. Provide adequate ventilation.
7. Do not use heater in occupied dwellings or in living or sleeping quarters.

## SAFETY INFORMATION CONTINUED

8. Do not use heater in a basement or below ground level. Propane gas is heavier than air. If a leak occurs, propane gas will sink to the lowest possible level.
9. Keep appliance area clear and free from combustible materials, gasoline, paint thinner and other flammable vapors and liquids. Dust is combustible. Do not use heater in areas with high dust content.
10. Minimum heater clearances from combustible materials:  
Outlet: 8 Ft. (2.4 m), Sides: 2 Ft. (0.6 m), Top: 6 Ft. (1.8 m), Rear: 2 Ft. (0.6 m).
11. Keep heater at least 6 feet (1.8 m) in the U.S or 10 feet (3.0 m) in Canada from propane tank(s).  
Forced air heaters should not be directed towards any propane or gas container within 20 feet (6.1 m) of the exit nozzle.
12. Keep propane tank(s) below 100° F (37.8° C).
13. Check heater for damage before each use. Do not use a damaged heater.
14. Locate heater on stable and level surface if heater is hot or operating.
15. Never block air inlet (rear) or air outlet (front) of heater.
16. Keep heater away from strong drafts, wind, water spray, rain or dripping water.
17. Do not leave heater unattended.
18. Keep children and animals away from heater.
19. Never move, handle or service a hot or operating heater. Severe burns may result. You must wait 15 minutes after turning heater off.
20. To prevent injury, wear gloves when handling heater.
21. Never attach duct work to heater.
22. Do not alter heater. Keep heater in its original state.
23. Do not use heater if altered.
24. Turn off propane supply to heater and unplug heater when not in use.
25. Use only original replacement parts. This heater must use design-specific parts.  
Do not substitute or use generic parts. Improper replacement parts could cause serious or fatal injuries.
26. For installation or operation on (or over) non-combustible floors only.
27. This appliance can only be installed in a building under construction, repair or improvement; and can not be installed in any inhabited dwelling unit or inhabited sections of a building.

## UNPACKING

1. Remove all packing items applied to heater for shipment. Keep plastic cover caps (attached to inlet connector and hose/regulator assembly) for storage.
2. Remove all items from carton.
3. Check all items for shipping damage. If heater is damaged, promptly inform dealer where you bought heater.

## SPECIFICATIONS

Model No	SRCH11011	SRCH11033
Gas Consumption	35,000~55,000Btu/Hr	85,000~125,000Btu/hr
Gas Consumption	1.62~2.55 LBS/Hr	3.96~5.72 LBS/Hr
Fuel	Propane	Propane
Supply Pressure (To Regulator)	Maximum:Cylinder Pressure Minimun: 5PSI	Maximum:Cylinder Pressure Minimun: 5PSI
Regulator Outlet Pressure	11" W.C.	20" W.C.
Electrical Input	AC110~120V 60Hz 72W	AC110~120V 60Hz 95W
Igniton	Direct Spark Ignition	press-button Spark Ignition
Primary Flame Control	Thermocouple Operated Gas valve	Thermocouple Operated Gas valve
Heated Air Output	350CFM(9.91m <sup>3</sup> /min)	350CFM(9.91m <sup>3</sup> /min)
Average Air Temp	Rise-200°F(111°C)	Rise-400°F(232°C)

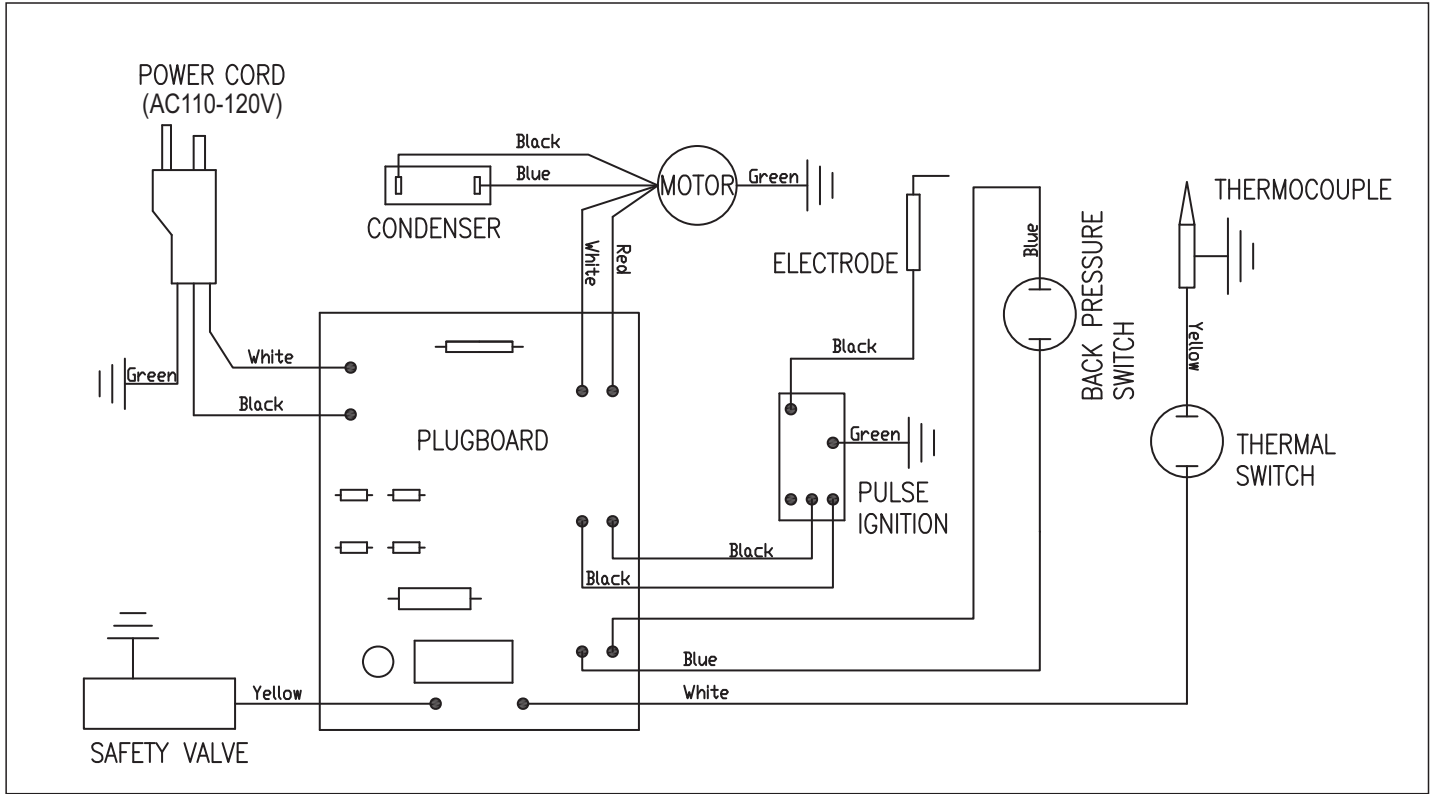
### SRCH11011:BTU Rating & Fuel Consumption

Position	IGN	LOW	MID	HIGH
Rating	35,000 Btu/Hr (10.26Kw/Hr)	42,000 Btu/Hr (12.3Kw/Hr)	48,000 Btu/Hr (14.07Kw/Hr)	55,000 Btu/Hr (16.12Kw/Hr)
Fuel Consumption/Hour	1.62 lb (0.74 kg)	1.94 lb (0.88 kg)	2.22 lb (1.01 kg)	2.55 lb (1.16 kg)

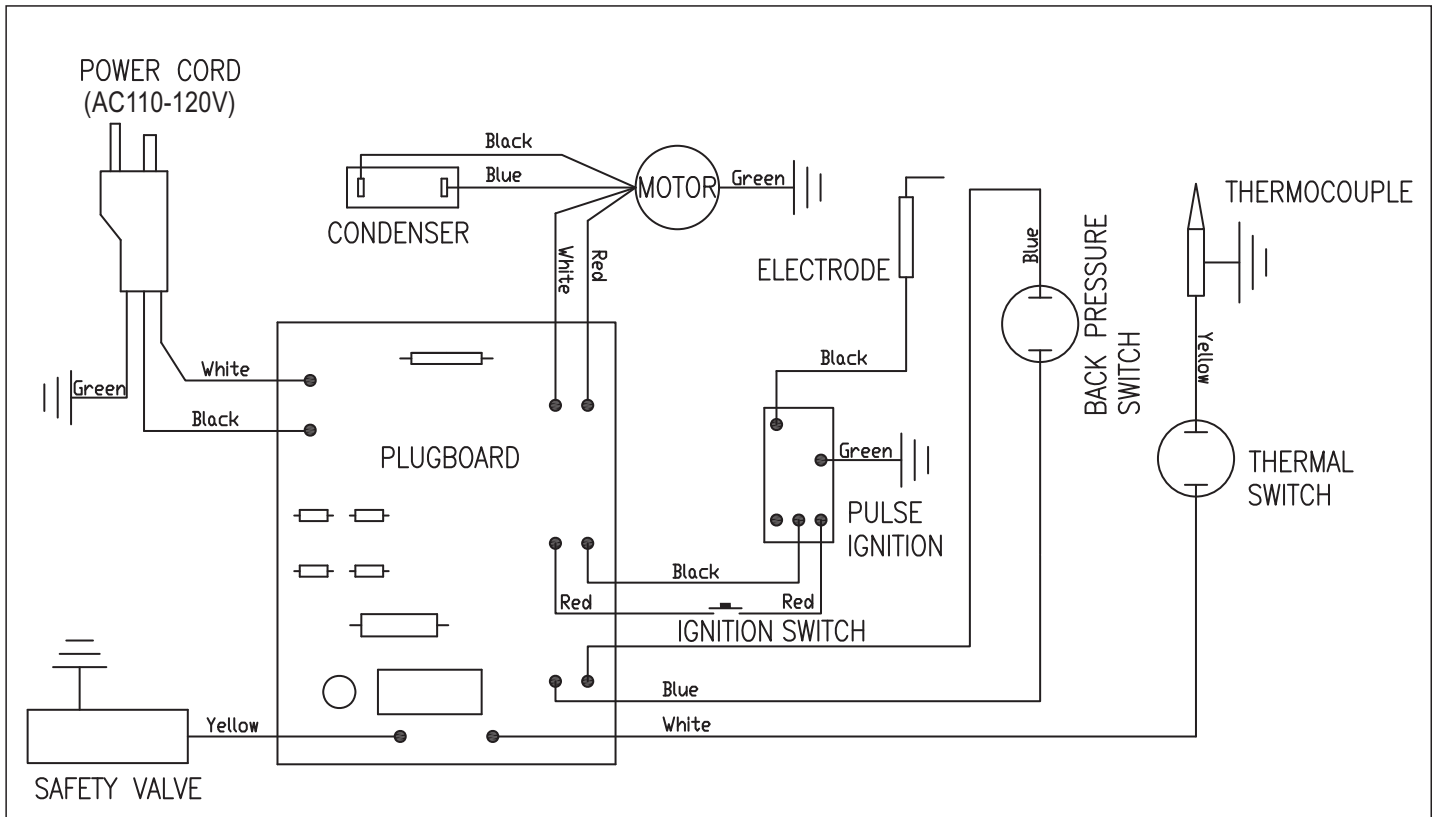
### SRCH11033:BTU Rating & Fuel Consumption

Position	IGN	LOW	MID	HIGH
Rating	85,000 Btu/Hr (24.9kW/Hr)	105,000 Btu/Hr (30.7kW/Hr)	112,000 Btu/Hr (32.8kW/Hr)	125,000 Btu/Hr (36.6kW/Hr)
Fuel Consumption/Hour	3.96 lb (1.8kg)	4.84 lb (2.2kg)	5.28 lb (2.4kg)	5.72 lb (2.6kg)

# WIRING DIAGRAM(SRCH11011)



# WIRING DIAGRAM(SRCH11033)



# PROPANE SUPPLY

Propane gas and propane tank(s) are to be provided by the user.

Use this heater only with a propane vapor withdrawal supply system. See Chapter 5 of the **Standard for Storage and Handling of Liquefied Petroleum Gas, ANSI/NFPA58**.

Your local library or fire department will have this booklet.

The amount of propane gas ready for use from propane tanks varies. Two factors decide this amount:

1. The amount of propane gas in tank(s)
2. The temperature of tank(s)

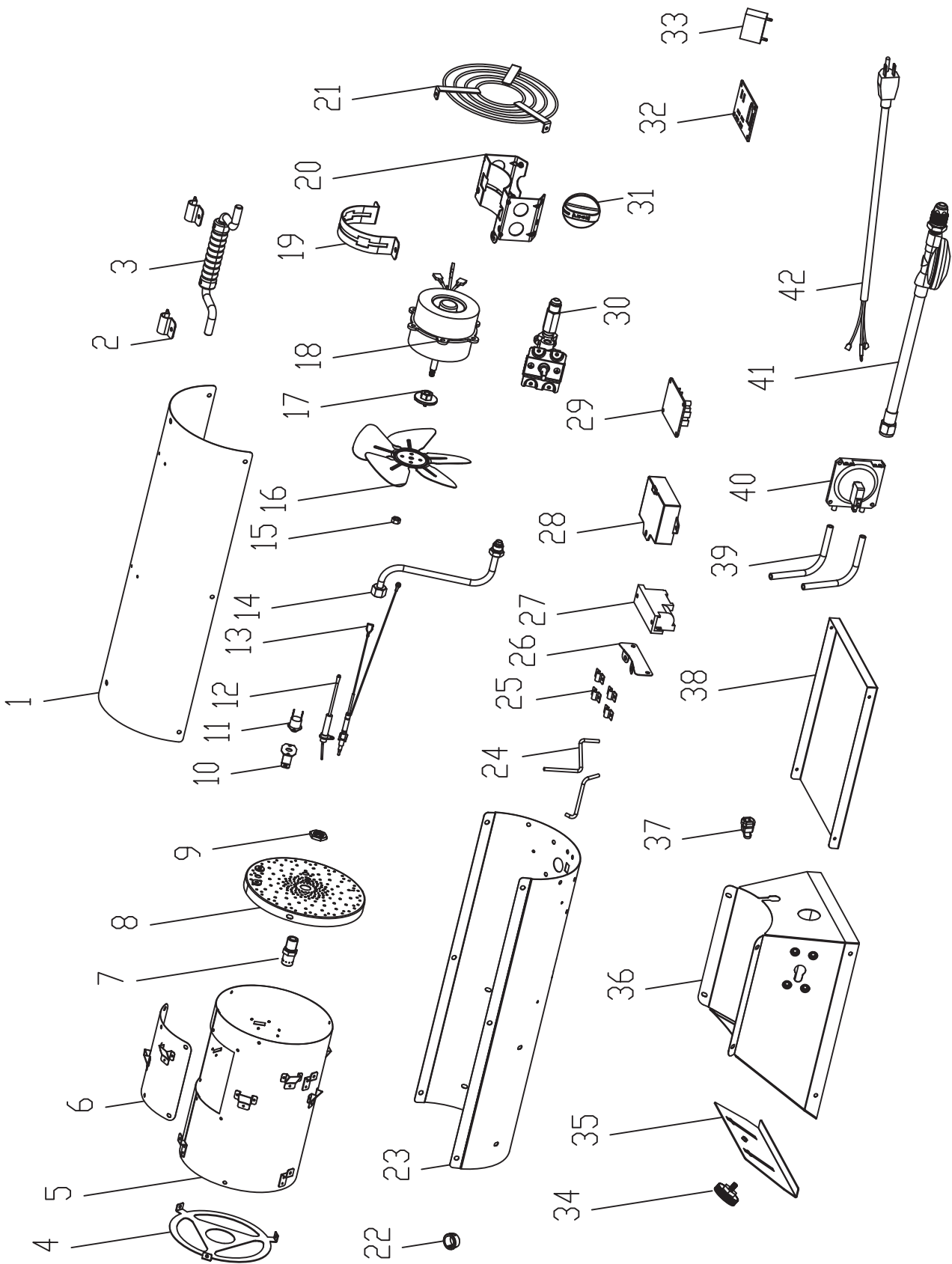
The cylinder and tank quantity relays on environment and temperature variables

Model No.	SRCH11011	SRCH11033
Temperature(°F) at tank	Number of Tank	Number of Tank
	35,000~55,000Btu/Hr	85,000~125,000Btu/Hr
Above 32°F	1-20lb	1-100lb
32°F	1-20lb	1-100lb
20°F	1-50lb	1-100lb
10°F	1-50lb	1-100lb
-10°F	1-50lb	2-100lb
-20°F	1-100lb	2-100lb

Less gas is vaporized at lower temperatures. You may need two or more 100 pounds (45 kg) tanks or one larger tank in colder weather. Your local propane gas dealer will help you select the proper supply system. The minimum surrounding air temperature rating for each heater is -20° F (-29° C).



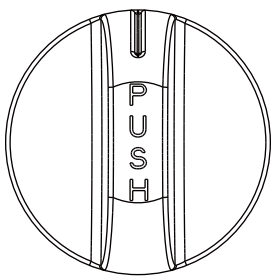
# ILLUSTRATED PARTS BREAKDOWN (MODEL NO.SRCH11011)



# PART LIST(MODEL NO.SRCH11011)

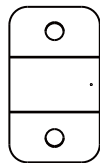
1)Upper Housing	1pc	22)Plastic Sleeve	1pc
2)Handle Support	2pcs	23)Bottom Panel	1pc
3)Handle	1pc	24)AL Tube	2pcs
4)Guard Panel	1pc	25)AL Tube Bracket	4pcs
5)Middle Cylinder Assembly	1pc	26)Pulse-controller Bracket	1pc
6)Servicing Panel	1pc	27)Pulse-controller	1pc
7)Nozzle	1pc	28)Plastic Box	1pc
8)Nozzle Fixing Panel	1pc	29)PCB Assembly	1pc
9)Nozzle Mounting Nut	1pc	30)Safety Valve Assembly	1pc
10)Temperature Control Valve Bracket	1pc	31)Knob	1pc
11)Temperature Control Valve	1pc	32)Waterproof Panel	1pc
12)Spark Plug	1pc	33)Capacitor	1pc
13)Thermocouple	1pc	34)Regulate Bolt	1pc
14)Fuel Tube Assembly	1pc	35)Regulate Panel	1pc
15)M6 Nut (Left)	1pc	36)Base Assembly	1pc
16)Fan	1pc	37)Strain Relief Bushing	1pc
17)Fan Fixing Panel	1pc	38)Base Panel	1pc
18)Motor	1pc	39)Plastic Tube	2pcs
19)Motor Fixing Bracket	1pc	40)Back Pressure Switch	1pc
20)Motor Support	1pc	41)Regulator Assembly	1pc
21)Motor Guard	1pc	42)Power Cord Assembly	1pc

## Hardware Contents



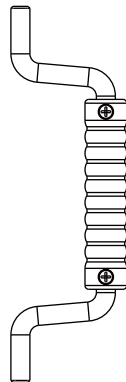
Knob

Qty.: 1



Handle Support

Qty.: 2



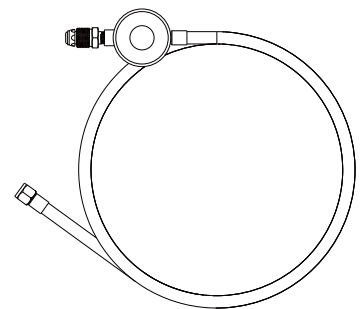
Handle

Qty.: 1



Self-tapping screw

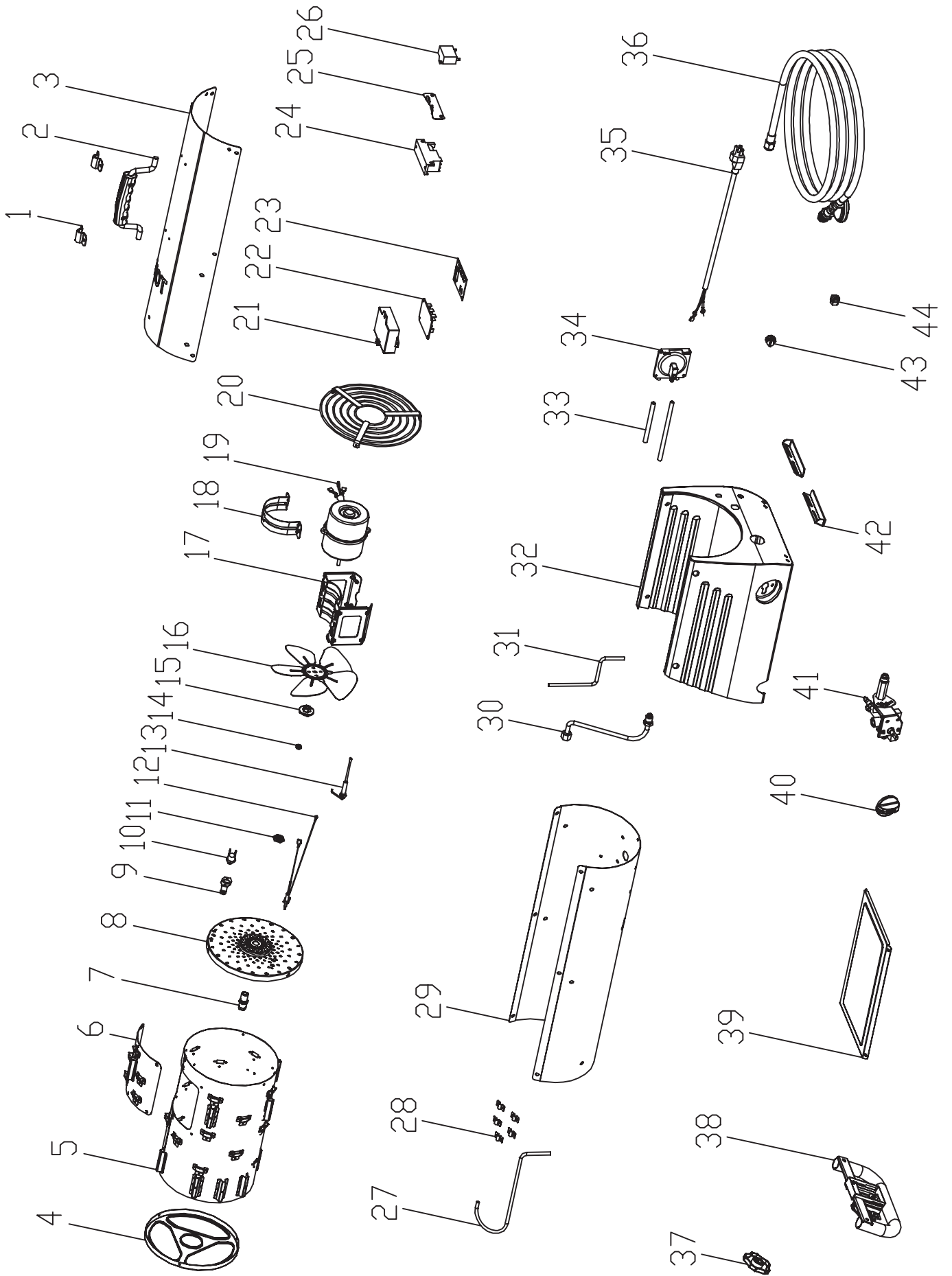
Qty.: 4



Regulator Assembly

Qty.: 1

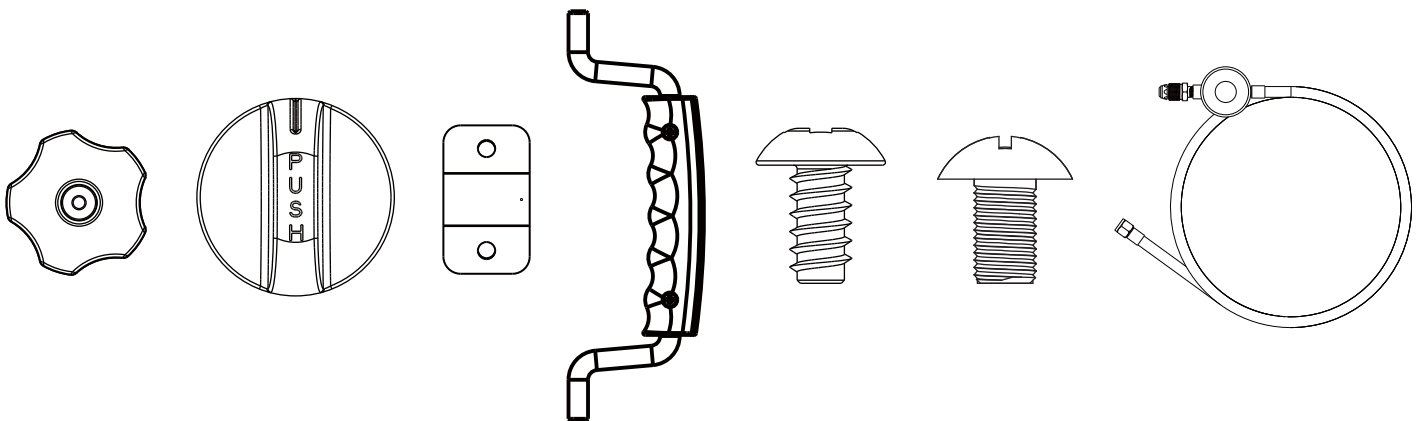
# ILLUSTRATED PARTS BREAKDOWN(MODEL NO.SRCH11033)



## PART LIST(MODEL NO.SRCH11033)

1)Handle Support	2pcs	23)Waterproof Panel	1pc
2)Handle	1pc	24)Pulse-controller	1pc
3)Upper housing	1pc	25)Pulse-controller Bracket	1pc
4)Guard Panel	1pc	26)Capacitor	1pc
5)Middle Cylinder Assembly	1pc	27)AL Tube 1	1pc
6)Serving Panel	1pc	28)AL Tube Bracket	5pcs
7)Nozzle	1pc	29)Bottom Panel	1pc
8)Nozzle Fixing Panel	1pc	30)Fuel Tube Assembly	1pc
9)Temperature control Valve Bracket	1pc	31)AL Tube 2	1pc
10)Temperature control Valve	1pc	32)Base Assembly	1pc
11)Nozzle Mounting Nut	1pc	33)Plastic Tube	2pcs
12)Thermocouple	1pc	34)Back Pressure Switch	1pc
13)Spark Plug	1pc	35)Power Cord Assembly	1pc
14)M6 Nut	1pc	36)Regulator Assembly	1pc
15)Fan Fixing Bracket	1pc	37)Lift Control Knob	1pc
16)Fan	1pc	38)Lift Device Stand	1pc
17)Motor Support	1pc	39)Base Panel	1pc
18)Motor Fixing Bracket	1pc	40)Knob	1pc
19)Motor	1pc	41)Safety Valve Assembly	1pc
20)Motor Guard	1pc	42)Left & Right Supports	2pcs
21)Plastic Box	1pc	43)Ignition Switch	1pc
22)PCB Assembly	1pc	44)Strain Relief Bushing	1pc

## Hardware Contents



Lift Control  
Knob

Qty.: 1

Knob

Qty.: 1

Handle  
Support

Qty.: 2

Handle

Qty.: 1

Self-tapping  
screw

Qty.: 4

M4x8 bolt

Qty.: 1

Regulator  
Assembly

Qty.: 1

## INSTALLATION



**WARNING: REVIEW AND UNDERSTAND THE WARNINGS IN THE SAFETY INFORMATION SECTION, PAGE 2. THEY ARE NEEDED TO SAFELY OPERATE THIS HEATER. FOLLOW ALL LOCAL CODES WHEN USING THIS HEATER.**



**WARNING: TEST ALL GAS PIPING AND CONNECTIONS FOR LEAKS AFTER INSTALLING OR SERVICING. NEVER USE AN OPEN FLAME TO CHECK A LEAK. APPLY A MIXTURE OF LIQUID SOAP AND WATER TO ALL JOINTS. BUBBLES FORMING SHOW A LEAK. CORRECT ALL LEAKS AT ONCE.**

1. Provide propane supply system (see *Propane Supply*).
2. Connect fuel gas connector fitting on hose/regulator assembly to propane tank(s). Turn counterclockwise into threads on tank valve. Tighten firmly using wrench. (Fig.1)
3. Connect hose to inlet connector. Tighten firmly using a wrench. *IMPORTANT:* Extra hose or piping may be used if needed. Install extra hose or piping between hose/regulator assembly and propane tank. You must use the regulator supplied with heater. (Fig.2)
4. Open propane supply valve on propane tank(s) slowly. **Note:** If not opened slowly, excess-flow check valve on propane tank may stop gas flow. If this happens, close propane supply valve and open again slowly.
5. Check all connections for leaks.
6. Close propane supply valve.

# INSTALLATION

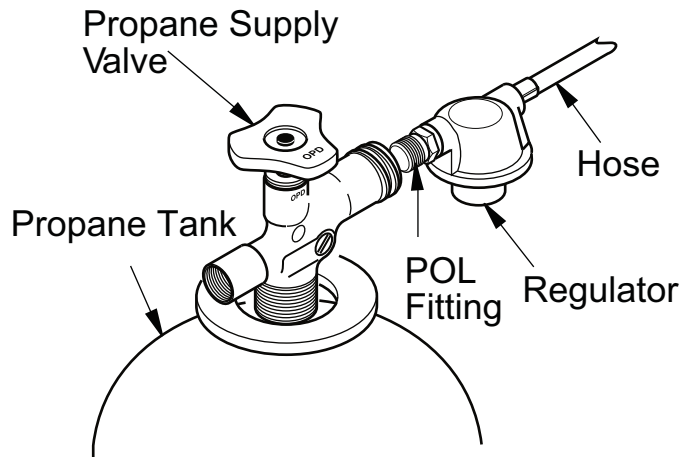


Figure 1 - Connecting Regulator To Propane Tank

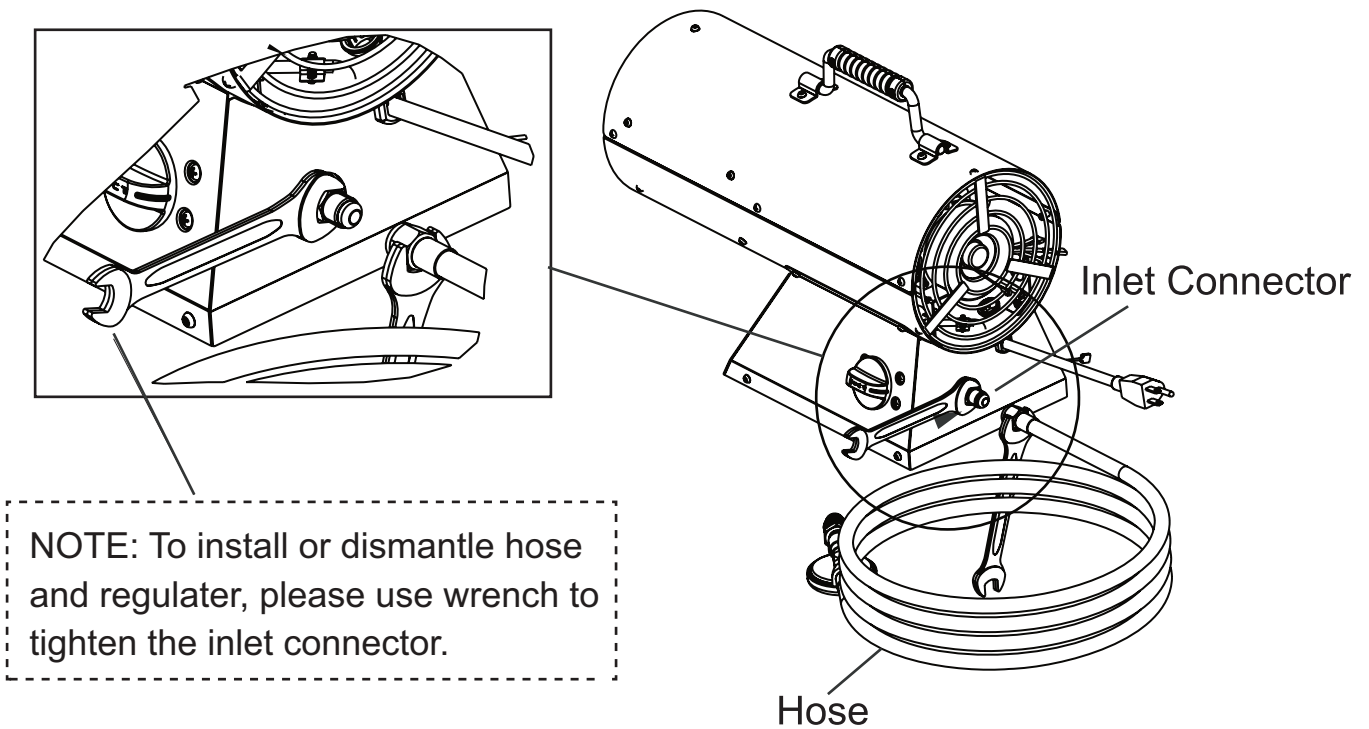
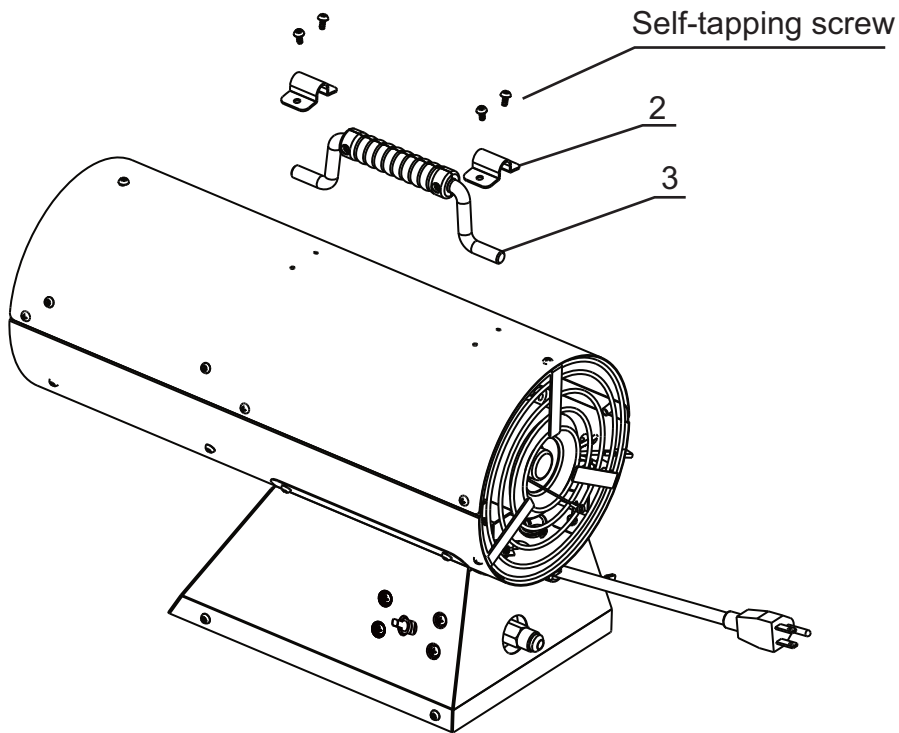


Figure 2 - Hose and Inlet Connector  
(Heater may vary from illustration)

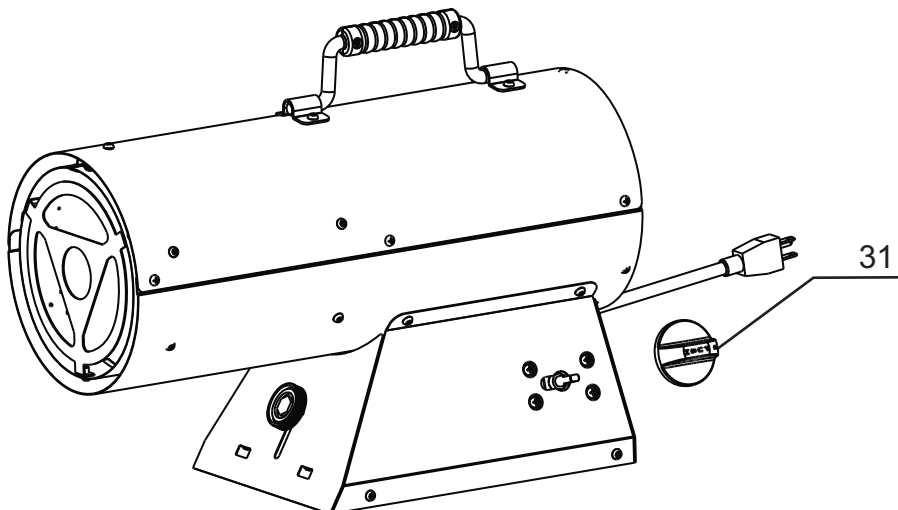
**Note: this is suitable for both SRCH11011 & SRCH11033**

# INSTALLATION(MODEL NO.SRCH11011)

1. Install handle (3) and handle support (2) with 4 self-tapping screws on the top surface of heater as diagram.

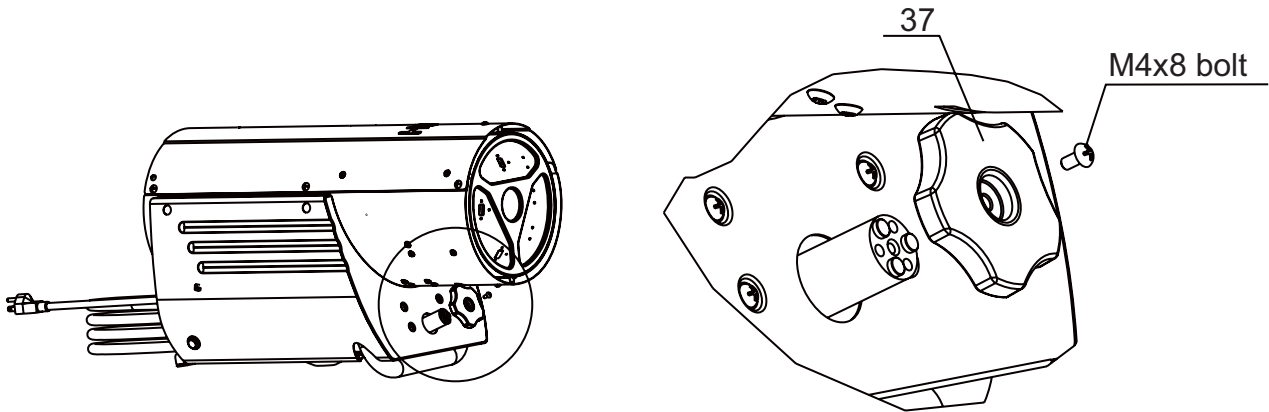


2. Insert the knob (31) and make sure the "OFF" position is matchable as diagram.



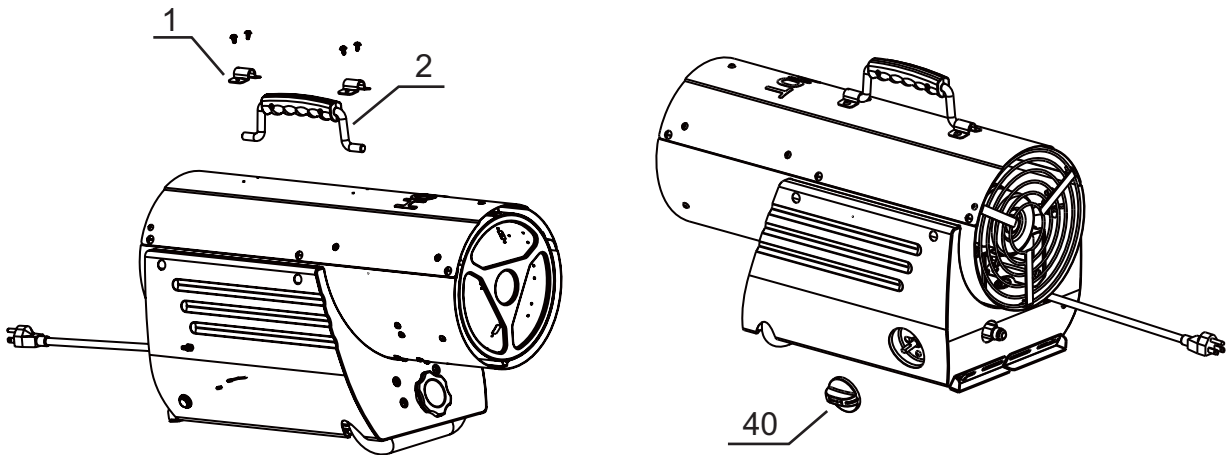
# INSTALLATION(MODEL NO. SRCH11033)

1. Attach the lift control knob (37) to the position with 1 M4X8 bolt.



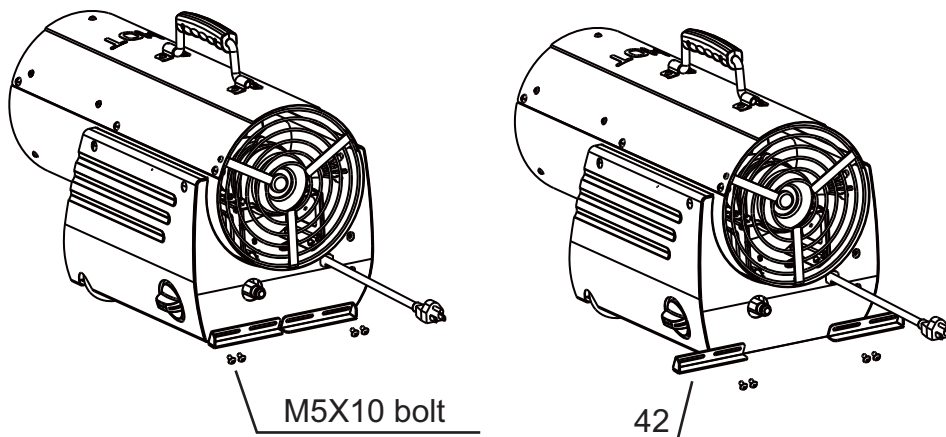
2. a) Install handle (2) and handle support (1) 4 with self-tapping screws on the top surface of heater as diagram.

b) Insert the knob (40) and make sure the "OFF" position is matchable shown in diagram.



3. a) Unscrew 4 M5X10 bolts from the left & right supports (42).

b) Divide the left & right supports (42) and reinstall them as illustrated, to enhance the product stability.





# SAFETY CHECK

**WARNING : ONLY AN AUTHORIZED GAS TECHNICIAN SHOULD INSTALL THIS PRODUCT.**

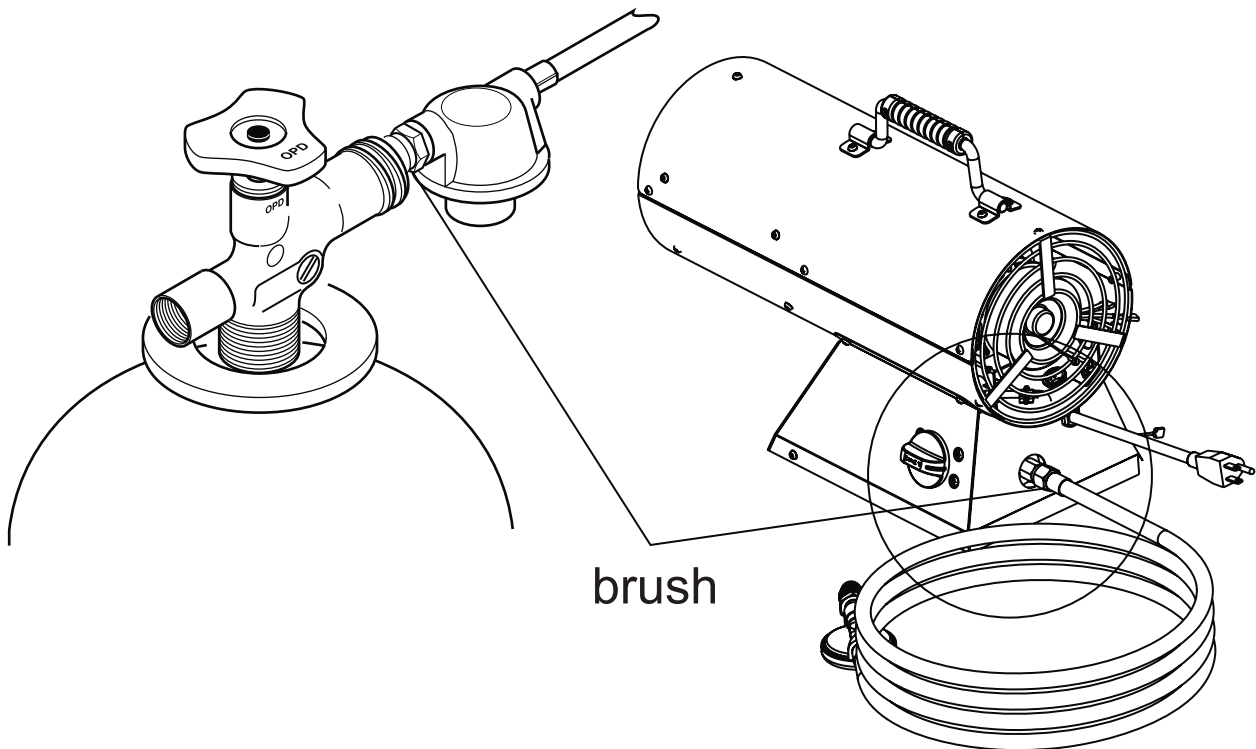
## CHECK FOR LEAKS

All connection on this heater have been checked for leakage at the factory. Follow these steps to check regulator/pressure adjustment valve/cylinder connections before operating:

- 1) Make leakage solution by mixing 1 part liquid dish soap and 3 parts water.
- 2) Spoon or brush several drops (or use squirt bottle) of the solution onto regulator & pressure adjustment valve connection, regulator & cylinder connection and illustrated connection joints.
- 3) Turn on gas cylinder valve. Inspect the connections and look for bubbles.
- 4) If no bubbles appear, the connection is safe.
- 5) If bubbles appear, there is leakage. Loosen and re-tighten this connection. If connection still leaks, please call customer service: 1-866-814-0585.

### Note:

- 1) The cylinder supply system must be arranged for vapor withdrawal;
- 2) The cylinder used must include a collar to protect the cylinder valve.



Note: this installation process applies to both SRCH11011 & SRCH11033

## VENTILATION

**⚠ WARNING:** Follow the minimum fresh, outside air ventilation requirements. If proper fresh, outside air ventilation is not provided, carbon monoxide poisoning can occur. Provide proper fresh, outside air ventilation before running heater.

## OPERATION

**⚠ WARNING:** Review and understand the warnings in the Safety Information section, page 2. They are needed to safely operate this heater. Follow all local codes when using this heater.

### BEFORE START HEATER

1. Follow all installation, ventilation and safety information.
2. Locate heater on stable and level surface. Make sure strong drafts do not blow into front or rear of heater.
3. Plug power cord of heater into a three-prong, grounded extension cord. Extension cord must be at least six feet (1.8 m) long, UL/CSA listed and of a proper size.

#### **Extension Cord Size Requirement**

Up to 100 feet (30.5 m) long, use 16 AWG rated cord.

101 to 200 feet (30.78 to 61 m) long, use 14 AWG rated cord.

# OPERATION MODEL NO.SRCH11011

## TO START HEATER (MODEL NO.SRCH11011)

1. Connect power cord to a properly grounded three(3) prong AC110-120V, 60Hz, single phase receptacle.
2. Motor will start and fan will turn, forcing air out from the heater.
3. Turn the control knob (31) clockwise to OFF position.
4. Turn on propane tank valve slowly, and wait fifteen(15) seconds to clear any gas. Check the gas connection with a soap or water solution, or if you don't smell gas, go to next step.  
Note: if don't turn on slowly, overflow protection device (OPD) on propane tank will stop gas flow, you may hear a click from the OPD closing. If this happens, reset the OPD by closing propane supply valve and turn on again slowly.
5. Push in and turn the control knob counterclockwise to IGN, this will light the burner.
6. Keep the control knob depressed for 30 seconds or until the thermocouple warms and allows gas flow.
7. If burner does not stay lit, repeat the lighting procedure.
8. When burner is lit, push in and turn the control knob counterclockwise to desired setting.

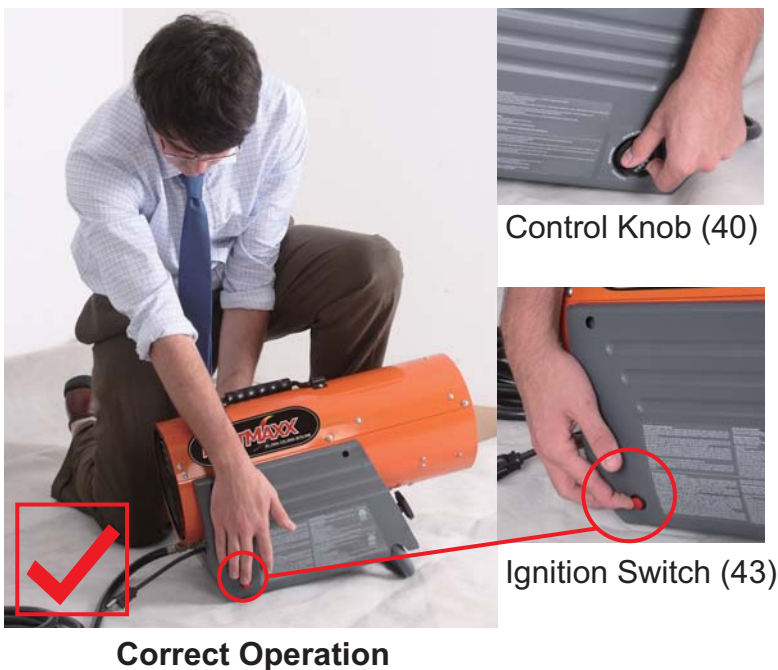
## TO STOP HEATER

1. Turn gas supply OFF by turning propane tank valve clockwise to close.
2. Turn control knob (31) clockwise to OFF position.
3. Disconnect the power cord once the heater has cooled to ambient temperature.

# OPERATION MODEL NO.SRCH11033

## TO START HEATER (MODEL NO.SRCH11033)

1. Connect power cord to a properly grounded three (3) prong AC110-120V, 60Hz, single phase receptacle.
2. Motor will start and fan will turn, forcing air out from the heater.
3. Turn the control knob clockwise to OFF position.
4. Turn on propane tank valve slowly, and wait fifteen(15) seconds to clear any gas. Check the gas connection with a soap or water solution, or if you don't smell gas, go to next step.  
Note: if don't turn on slowly, overflow protection device (OPD) on propane tank will stop gas flow, you may hear a click from the OPD closing. If this happens, reset the OPD by closing propane supply valve and turn on again slowly.
5. Press the ignition switch (43) and a clicking sound will be heard, then push in and turn the control knob (40) counterclockwise to IGN, this will light the burner.
6. Keep the control knob depressed for 30 seconds or until the thermocouple warms and allows gas flow.
7. If burner does not stay lit, repeat the lighting procedure.
8. When the burner is lit, release the ignition switch (43), then push in and turn the control knob (40) counterclockwise to a desired heat setting.



**Warning:** Make certain that both ends of the heater are completely unobstructed during ignition AND operation. Ignite while positioned TO THE SIDE of the heater.

## TO STOP HEATER

1. Turn gas supply OFF by turning propane tank valve clockwise to close.
2. Turn control knob (40) clockwise to OFF position.
3. Disconnect the power cord once the heater has cooled to ambient temperature.

## STORAGE

 **CAUTION: Disconnect heater from propane supply tank(s).**

1. Store propane tank(s) in safe manner. See Chapter 5 of *Standard for Storage and Handling of Liquefied Petroleum Gases, ANSI/NFPA 58* and the *Propane Installation Code CAN/CGA B149.2*. Follow all local codes. Always store propane tanks outdoors.
2. Place plastic cover caps over brass fittings on inlet connector and hose/regulator assembly.
3. Store in dry, clean and safe place. Do not store hose/regulator assembly inside heater combustion chamber.
4. When taking heater out of storage, always check inside of heater. Insects and small animals may place foreign objects in heater. Keep inside of heater free from combustible and foreign objects.
5. When the heater is to be stored indoors, the connection between the propane supply cylinder(s) and the heater must be disconnected and the cylinder(s) removed from the heater and stored in accordance with *Standard for the Storage and Handling of Liquefied Petroleum Gases, ANSI/NFPA 58* and *CSA B149.1, Natural Gas And Propane Installation Code*.

## MAINTENANCE

### WARNINGS

**Never service heater while it is plugged in, connected to propane supply, operating or hot. Severe burns and electrical shock can occur.**

**Keep heater clear and free from combustible materials, gasoline and other flammable vapors and liquids.**

**Do not block the flow of combustion or ventilation air.**

1. Keep heater clean. Clean heater annually or as needed to remove dust and debris. If heater is dirty or dusty, clean heater with a damp cloth. Use household cleaners on difficult spots.
2. Inspect heater before each use. Check connections for leaks. Apply mixture of liquid soap and water to connections. Bubbles forming show a leak. Correct all leaks at once.
3. Inspect hose/regulator assembly before each use. If hose is highly worn or cut, replace with hose specified by manufacturer.
4. Have heater inspected yearly by a qualified service agency.
5. The appliance area are kept clear and free from combustible materials, gasoline and other flammable vapours and liquids.
6. The flow of combustion and ventilation air shall not be obstructed.

# TROUBLESHOOTING

**⚠ WARNING: Never service heater while it is plugged in, connected to propane supply, operating or hot. Severe burns and electrical shock can occur.**

OBSERVED PROBLEM	POSSIBLE CAUSE	REMEDY
Fan does not turn when heater is plugged in	1. No electrical power to heater	1. Check voltage to electrical outlet. If voltage is good, check heater power cord for breaks
	2. Fan hitting inside of heater shell	2. Adjust motor/fan mount to keep fan from hitting inside of heater shell. Bend fan mount if necessary
	3. Fan blades bent	3. Replace fan.
	4. Defective motor	4. Replace motor.
Heater will not ignite	1. User did not follow installation or operation instructions properly	1. Repeat installation and operation instructions.
	2. No spark at spark plug. To test for spark. If you see spark at spark plug, have heater serviced by qualified service person. If no spark seen: A) Loose or disconnected spark plug wire B) Bad spark plug C) Bad spark transformer	2. A) Check spark plug wire. Tighten or reattach loose spark plug wire. B) Replace spark plug. C) Replace spark transformer.
	3. Switch broken ( used for SRCH11033)	3. replace switch ( used for SRCH11033)
Heater shuts down while running	1. Propane supply may be inadequate	1. Provide a full tank.
	2. Internal temperature too high causing limit switch to shut down operation.	2. If the heaters output is restricted, internal temperature becomes too high. Move heater away from any obstructions.
	3. Damaged Control Valve.	3. Replace Control Valve.
	4. Excessive dust or debris in surrounding area	4. Clean heater.

**⚠ WARNING: Use only in areas free of high dust content.**

## REPLACEMENT PARTS

**⚠ WARNING: Use only original replacement parts. This heater must use design-specific parts. Do not substitute or use generic parts. Improper replacement parts could cause serious or fatal injuries. This will also protect your warranty coverage for parts replaced under warranty.**

### PARTS UNDER WARRANTY

Contact authorized dealers of this product. If they can't supply original replacement part(s), either contact your nearest Parts Central or call SHINERICH customer service Toll Free No.: 1-866-814-0585.

When calling SHINERICH, have ready:

- your name
- your address
- model and serial numbers of your heater
- how heater was malfunctioning
- purchase date

### PARTS NOT UNDER WARRANTY

Contact authorized dealers of this product. If they can't supply original replacement part(s), either contact your nearest Parts Central or call SHINERICH customer service Toll Free No. 1-866-814-0585.

When calling SHINERICH, have ready:

- model number of your heater
- the replacement part number

### TECHNICAL SERVICE

You may have further questions about this heater. If so, contact SHINERICH customer service Toll Free No.: 1-866-814-0585. When calling, please have your model and serial numbers of your heater ready.



## **WARRANTY AND REPAIR SERVICE KEEP THIS WARRANTY**

Model \_\_\_\_\_

Serial No. \_\_\_\_\_

Date of Purchase \_\_\_\_\_

### **ONE-YEAR LIMITED WARRANTY**

The appliance has been manufactured under the highest standards of quality and workmanship. We warrant to the original consumer purchaser that all aspects of this product will be free of defects in material and workmanship for one (1) year from the date of purchase. A replacement for any defective part will be supplied free of charge for installation by the consumer. Defects or damage caused by the use of other than genuine parts are not covered by this warranty. This warranty shall be effective from the date of purchase as shown in the purchaser's receipt.

This warranty is valid for the original consumer purchaser only and excludes industrial, commercial or business use of the product, product damage due to shipment or failure which results from alteration, product abuse, or product misuse, whether performed by a contractor, service company, or consumer. We will not be responsible for labor charges and/or damage incurred in installation, repair or replacement, nor for incidental or consequential damage.

Questions, problems, missing parts?

Before returning to your retailer, call our customer service department at

1-866-814-0585, 8 a.m.-5 p.m., EST,

Monday-Friday.

E-mail: [customerservice@shinerichgroup.com](mailto:customerservice@shinerichgroup.com).

SHINERICH INDUSTRIAL LTD.

Addr.: 8/F, Noble Center, 1006 Fuzhong 3rd. Rd, Futian District, Shenzhen, China

Printed in China