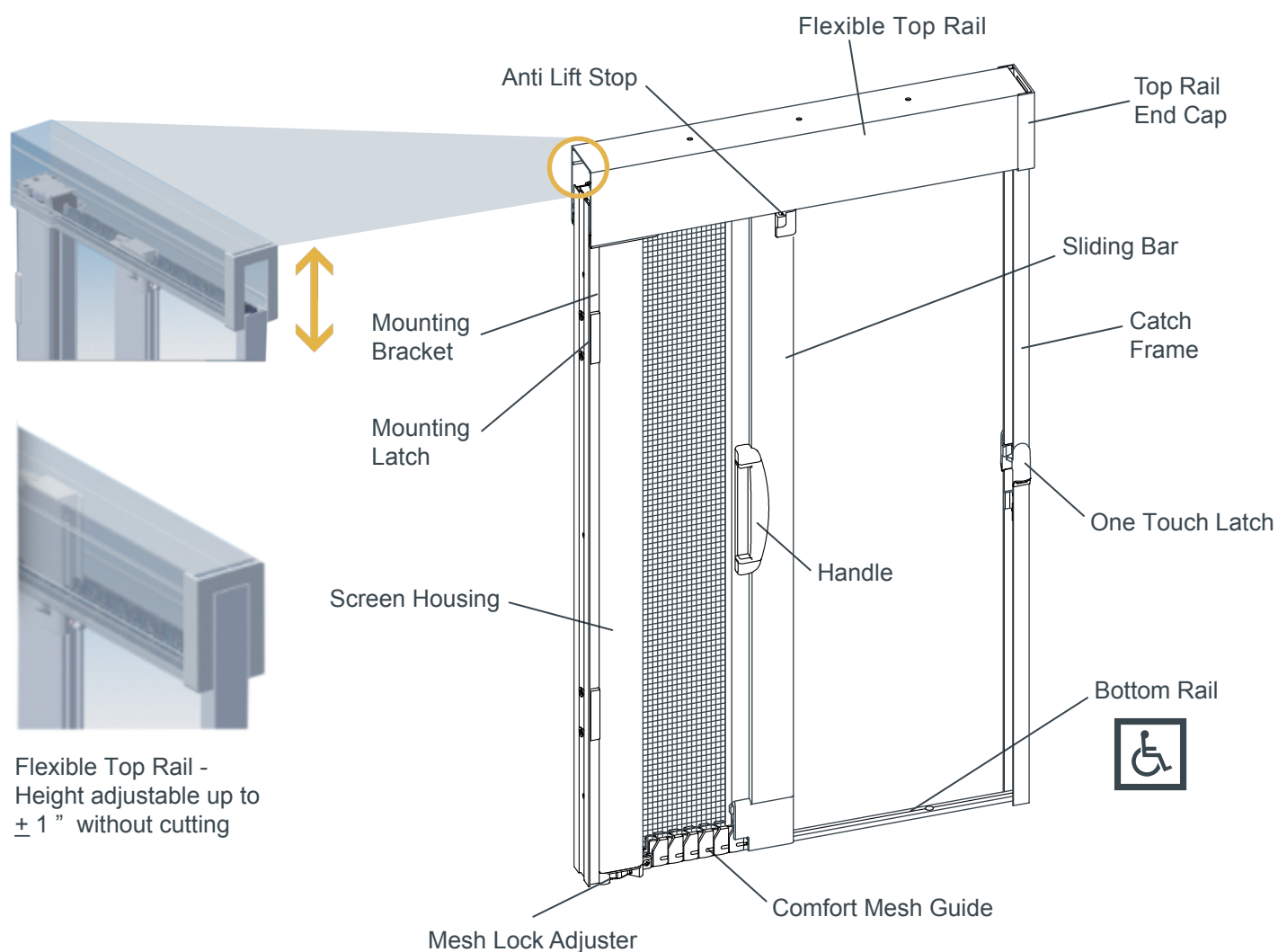
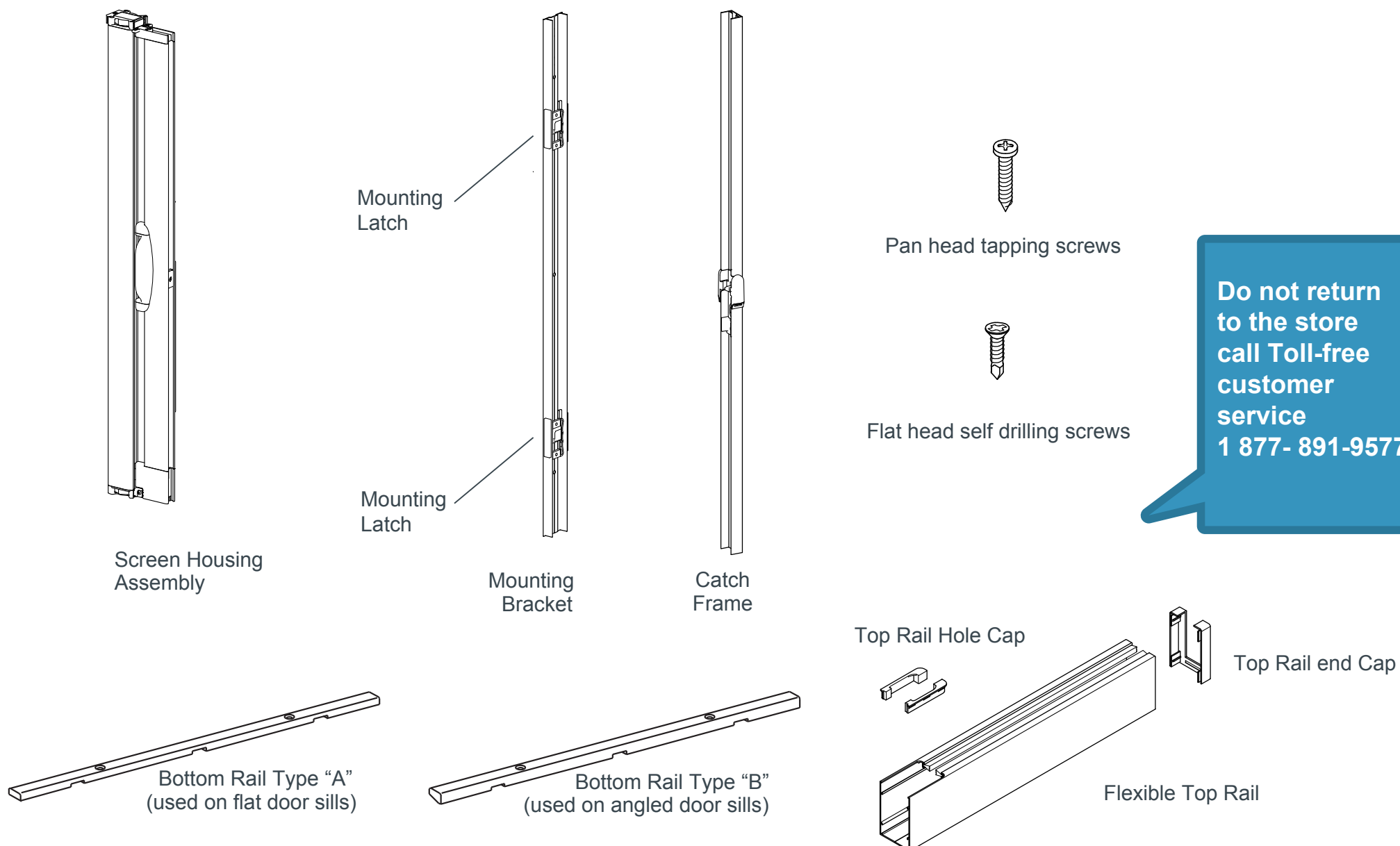


Screen Components

**FLEXIBLE TOP
RAIL QUICK
AND EASY
INSTALLATION**



Parts List

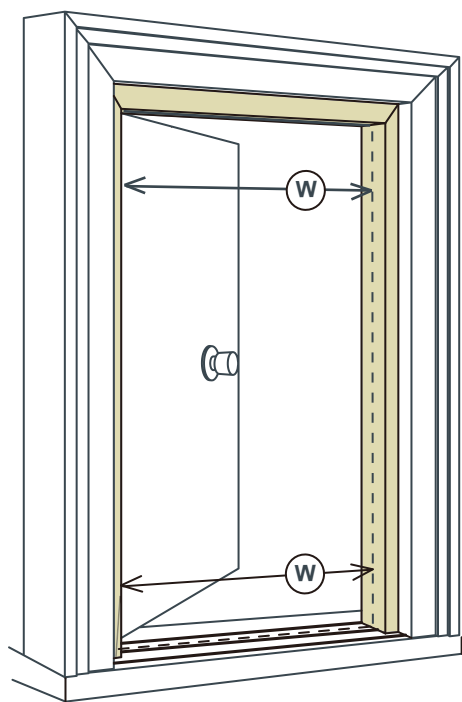


**Do not return
to the store
call Toll-free
customer
service
1 877- 891-9577**

Before beginning, make sure that all these parts are included in the Comfort Screen package.

Step #1 Measuring the width of the opening

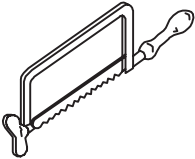
- (1) Measure the dimension between the right and left sides of the door frame at both the top and bottom of the doorway. Record the smallest of the two in the box below.



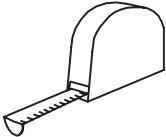
Width (W)

Tools

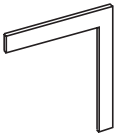
Hack saw
32tpi *



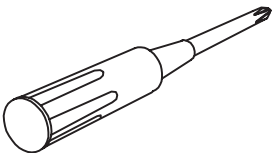
Measuring tape



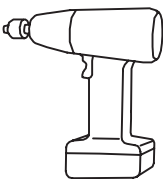
Carpenter square




Philips screwdriver




Electric drill



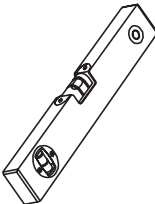
File



Pen



Level



The Comfort screens the width can be sized and installed using common household tools. Make sure all necessary tools are available before beginning.

*NOTE: A chop saw can be used in place of a hacksaw provided that a bi-metal blade has been properly installed.

Step #2 Determining the cutting length for horizontal components

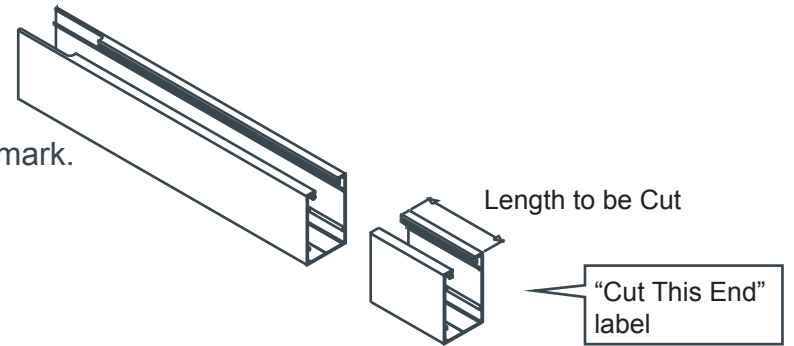
- (1) Determining the Length to be Cut from the Flexible Top Rail and the Bottom Rail, using the following formula.

	(Measured Width)	(Length to be cut off)
36" (914mm) -	[]	= <input type="text"/>

Step #3 Cutting the horizontal components

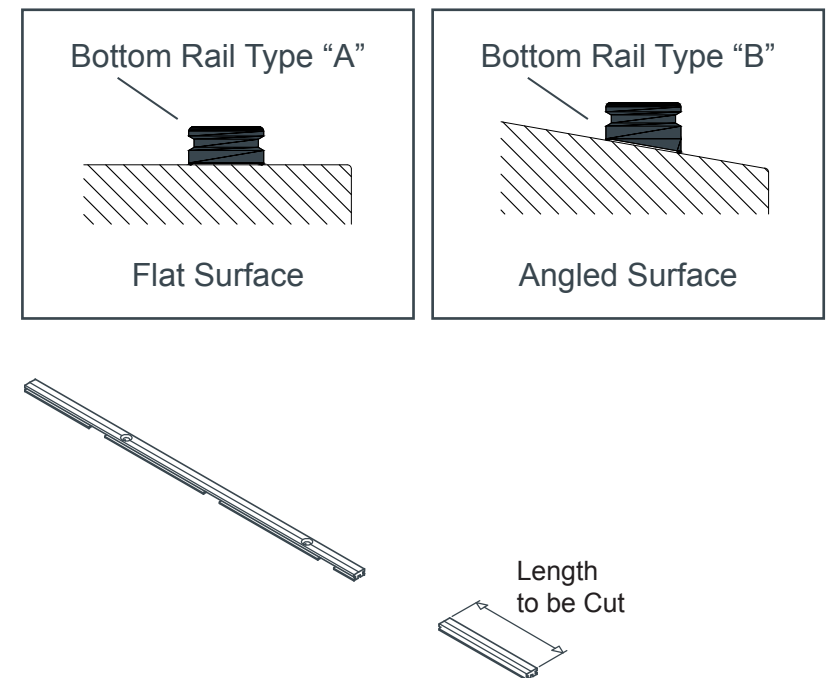
Cutting the Flexible Top Rail

- (1) Using the "Length to be Cut" dimension calculated in Step #2, measure from the end of the Flexible Top Rail with "Cut This End" label and mark.
- (2) Cut straight through the Flexible Top Rail.



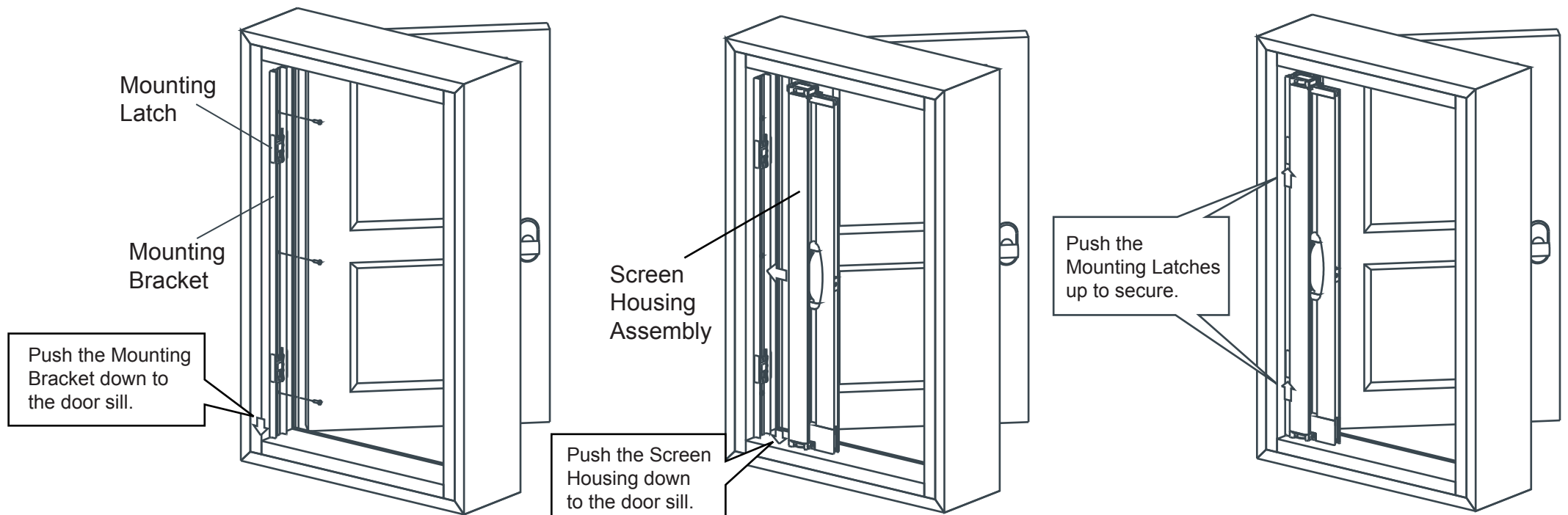
Cutting the Bottom Rail

- (1) Before cutting, choose the correct Bottom Rail for installation. The screen package comes with two Bottom Rails (Type "A" and "B") to accommodate both flat and angled door sills. Refer to the image on the right to determine the correct one.
- (2) Using the "Length to be Cut" dimension calculated in Step #2, measure and mark the Bottom Rail.
- (3) Cut straight through the Bottom Rail.



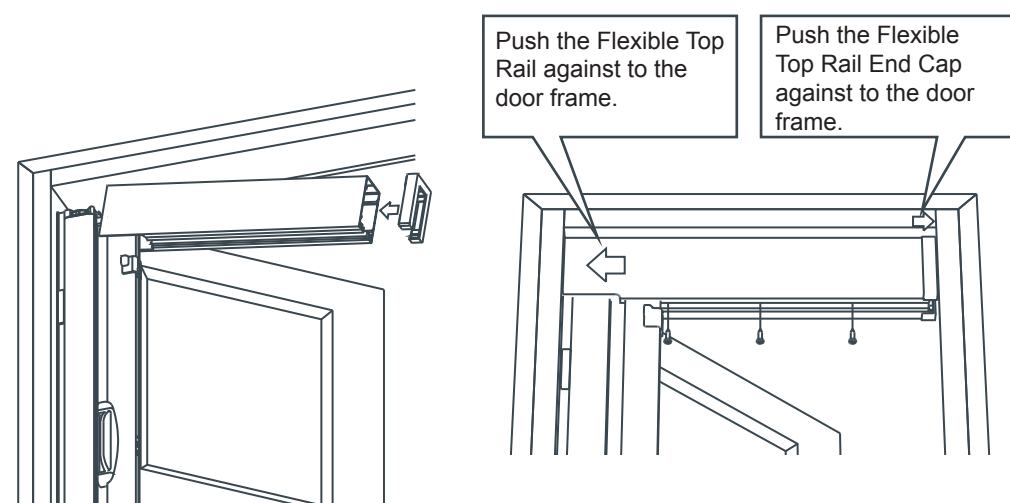
Step #4 Installing the Screen Housing Assembly

- (1) Secure the Mounting Bracket to the door frame using the screws provided.
Note: It is important that the bottom of the Mounting Bracket fits tight to the door sill.
- (2) Fit the Screen Housing Assembly into the Mounting Bracket.
- (3) Push the Mounting Latches up to secure the Screen Housing Assembly.



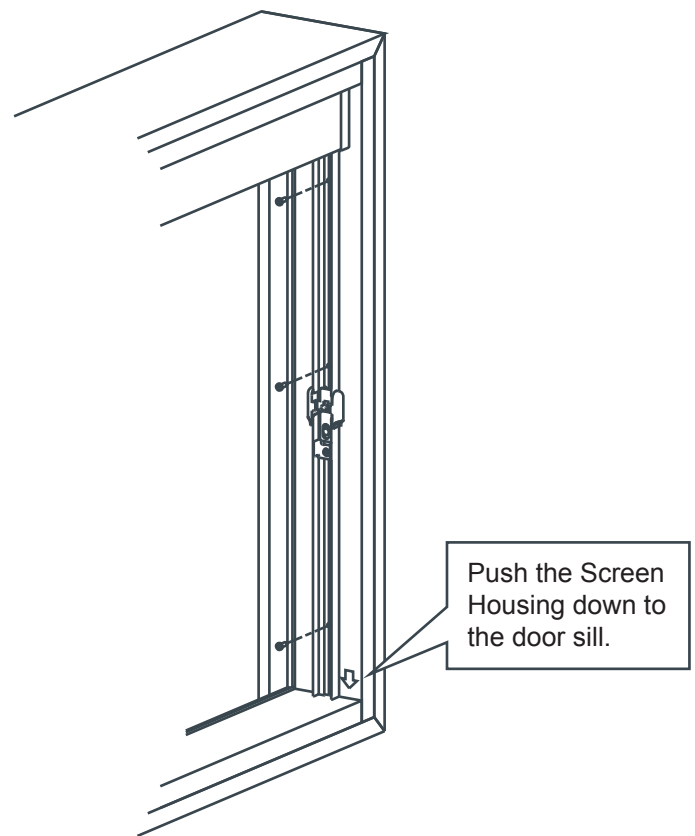
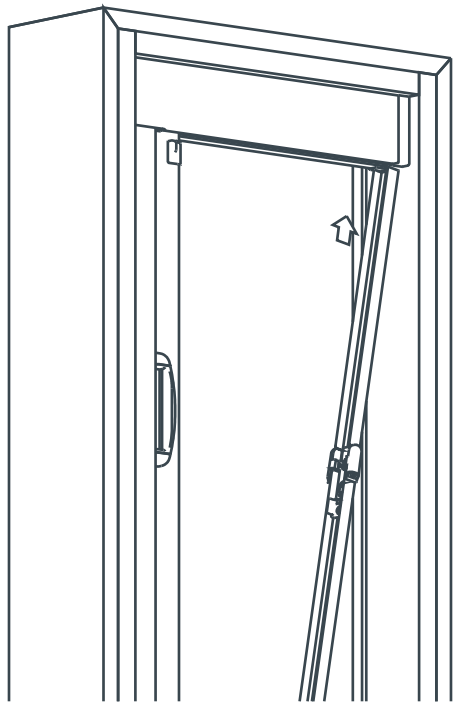
Step #5 Installing the Top Rail

- (1) Install the Flexible Top Rail End Cap onto the end of the Flexible Top Rail without slot.
- (2) Insert the Flexible Top Rail to the top of the Screen Housing as far as it will go.
- (3) Secure the Flexible Top Rail using the screws provided.
- (4) Slide the Top Rail End Cap so that any space can not be seen between the Flexible Top Rail and the door frame.



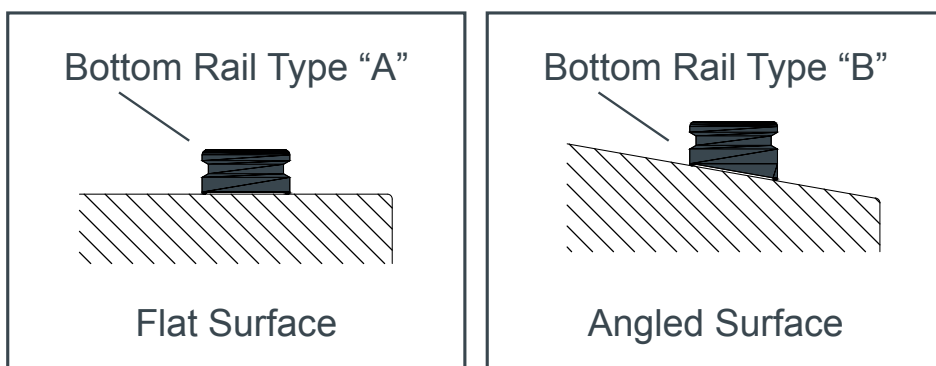
Step #6 Installing the Catch Frame

- (1) Insert the Catch Frame into the bottom of the Top Rail End Cap.
- (2) Ensure that the bottom of the Catch Frame fits tight to the door sill.
- (3) Secure the Catch Frame with the screws provided.

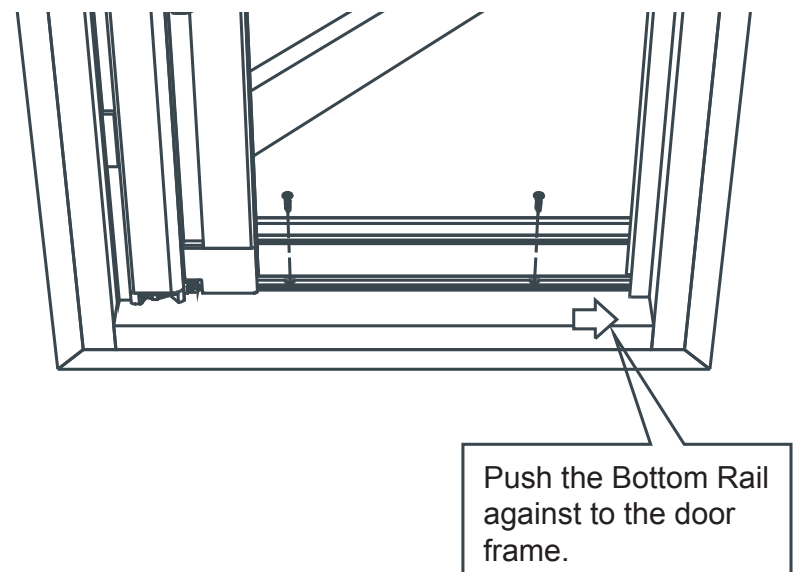
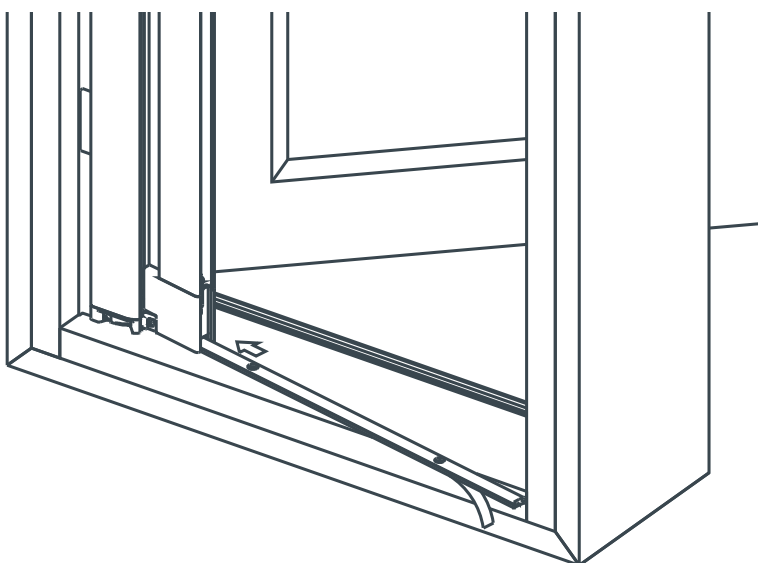


Step #7 Installing the Bottom Rail

Note; in the case the Bottom Rail does not require cutting, choose the correct Bottom Rail for installation from the Type "A" and "B". Refer to the image below to determine the correct one.



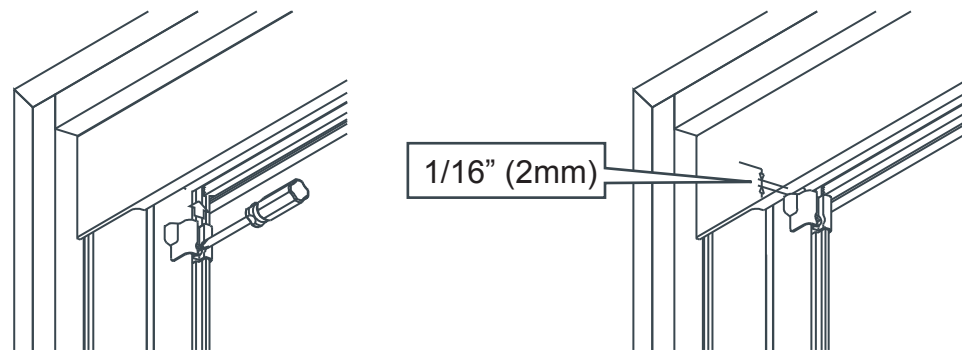
- (1) Remove the backing from the adhesive strip on the Bottom Rail.
- (2) While slightly lifting the Sliding Bar, insert the end of the appropriate Bottom Rail into the groove at the bottom of the Sliding Bar Bottom Cap.
- (3) Position the other end so that it fits tight to the Catch Frame, and press the Bottom Rail firmly onto the door sill.
- (4) Fasten the Bottom Rail with the screws provided.



Step #8 Final Steps

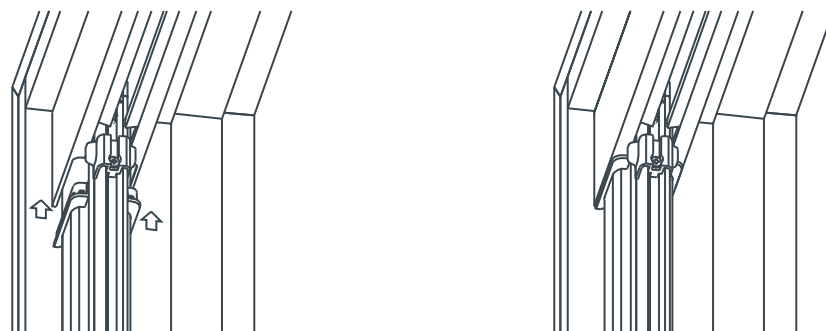
Adjusting the Anti Lift Stop

- (1) Loosen the set screw on the Anti Lift Stop on the Sliding Bar.
- (2) Slide the Anti Lift Stop upward until it is positioned approximately 1/16" (2mm) from the underside of the Flexible Top Rail.
- (3) Tighten the set screw to secure in place.



Installing the Top Rail Hole Caps

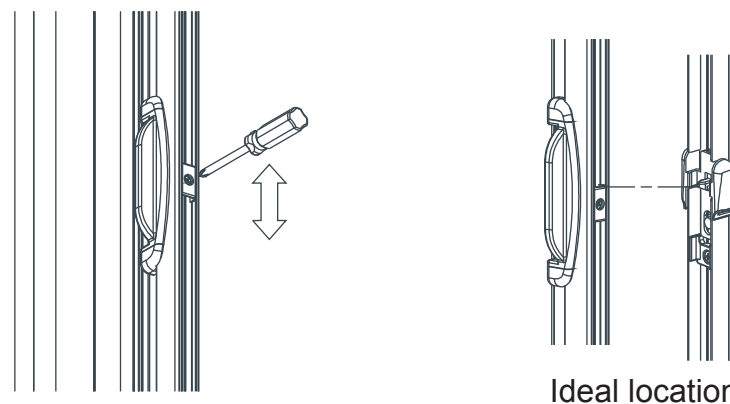
- (1) Snap the Top Rail Hole Caps into the slot on the underside of the Top Rail from the front and the back side of the Screen Housing.



Adjusting the Catch

Note; only in the case the Latch doesn't make a secure contact with the Catch, adjust the location of the Catch in the following procedures.

- (1) Loosen the screw on the Catch.
- (2) Move the Catch up and down until the Latch makes a secure contact with the Catch. (Refer to the "Ideal location" on the right.)
- (3) Tighten the screw to secure in place.



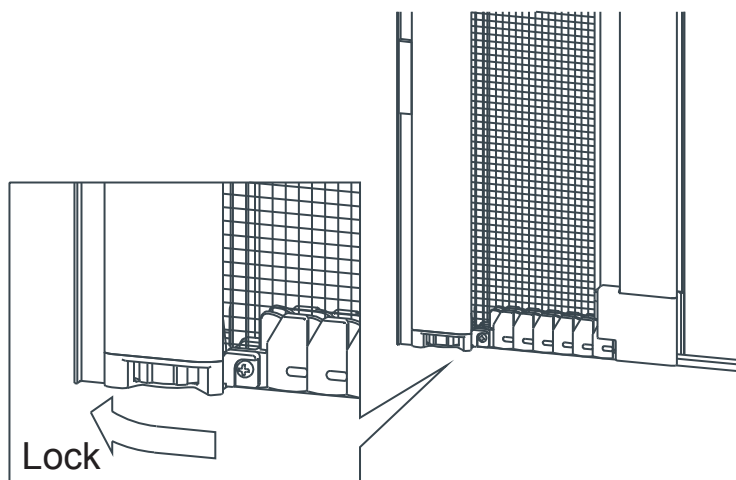
Adjusting the Mesh

The screen can be adjusted to reduce the amount of mesh discharged from the Screen Housing. This keeps the mesh tight, providing protection against insects.

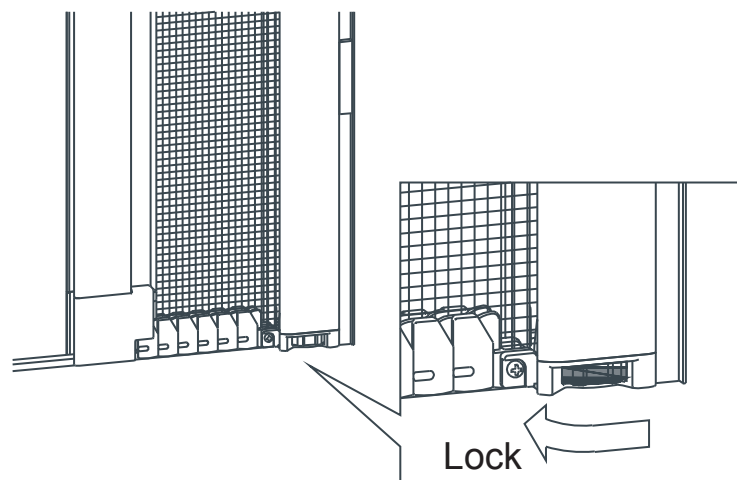
- (1) Close the screen.
- (2) Turn the dial on the Bottom of the Screen Housing in the direction illustrated below until you meet resistance, but do not over-tighten.

Note; the direction to turn depends on the side which you see from. Refer to the images below.

When you see the Screen Housing on the left side.



When you see the Screen Housing on the right side.



Congratulations! You have now completed the installation!

HH
EUROSCREENS
BUG DEFENSE SYSTEMS

Comfort Retracting Screen Limited Lifetime/Non-transferable Manufacturers Warranty

The comfort retracting Screen is warranted by Euro-screens to be free of manufacturers' defects in materials or workmanship, for as long as the original purchaser owns and or resides at that residence and that the product remains at its original point of installation. Euro-screens will repair or replace at its discretion any component, within the terms and conditions of this warranty, which is deemed as being defective from the manufacturing process upon proof of purchase. This warranty excludes the fiberglass screen mesh. Furthermore this warranty does not cover components damaged through improper use or installation, or if components have been altered from their original state in a manner not otherwise prescribed in this manual. This warranty is strictly limited to defective components only. This non-transferable, limited warranty excludes labor, breakage or damage due to normal wear and tear, lack of maintenance, or use for other than residential applications, accidents and "acts of god". Replacements or repairs made subject to this limited warranty are otherwise warranted for the balance of the original warranty period. Comfort Retracting System's liability under this limited warranty is restricted to the corrective actions as set forth herein and contrarily repudiates all incidental and consequential damage. It is the responsibility of the consumer to notify Euro-screens of missing components, within 30 days of the purchase of the Comfort Retracting Screen. The Comfort Retracting Screen is designed to assist in keeping unwanted insects from the home; it is in no way intended as a safety or security device to prevent access by individuals, animals or small children. Liability for any damages, including but not limited to general, special, indirect, incidental, consequential, aggravated, punitive or exemplary damages, and economic loss, as well as for breach of any expressed or implied warranties, including but not limited to implied warranties of merchantability, quality and fitness for any purpose other than as prescribed herein, is disavowed and omitted here from, to the extent that such a disclaimer and preclusions are permitted by the laws of any particular jurisdiction.

Maintenance: Keep Bottom Rail clean and free of debris. Periodic use of silicone spray onto the inside of the Flexible Top Rail, the Bottom Rail and the Comfort Mesh Guide is recommended; do not use petroleum-based lubricants.

Comfort Retracting Screen
Manufactured by
Euro-screens

PRODUCT INFORMATION MANUAL
For warranty claims
Call 1-877-891-9577
Or email: customerservice@euro-screens.com

For maintenance and helpful
hints, please refer to our web site,
www.euro-screens.com