

# *Century*

by Heat Controller, Inc. <sup>®</sup>



**Energy Saving  
Space Saving**

**80% Gas Furnace**



# **This low profile gas furnace stands tall in features and fuel economy**

## **LOW PROFILE CABINET**

At just 34" high, our 80% furnace cabinet is ideally suited to both new construction and replacements—models can fit into the space of virtually any furnace being replaced, including attics, crawl spaces and utility closets. There's also plenty of room for add-ons such as a whole house humidifier.

Contractors will appreciate not just the small size, but also the number of installation options, including left- or right-side gas, electric and condensate drain connections that require just a simple change.

## **ENERGY EFFICIENCY**

AFUE ratings of 80% or better mean that nearly all the heat generated by the furnace is used to heat the home. In this time of soaring fuel prices, better utilization of natural resources can mean significant dollar savings for you.

## **FULL RANGE OF MODELS**

Our GM series packs a lot of heating punch in a small package. Models are available in upflow/horizontal and downflow, and in capacities ranging from 50,000 BTUH to 150,000 BTUH.



*Models are available in upflow/horizontal and downflow configurations; upflow/horizontal shown.*

## **SIMPLE INSTALLATION**

The furnace comes completely assembled and pre-wired, ready for installation. The integrated solid state control board speeds installation and is ready to accept comfort options such as central air conditioning.

These features make maintenance and servicing easy to do. Doors remove quickly and all components are readily accessible.

Because of its small size, there's plenty of working room when the furnace is being installed. It's also a convenient size for loading and unloading on a truck or van, and fits easily through most doors and hallways.

## **QUIET OPERATION**

The specially designed draft inducer motor, slow-opening gas valve, and electronic ignition are all designed and proven over time to provide clean, efficient, quiet combustion.

## **WARRANTY COVERAGE**

Our 80% furnaces are backed by a 20 year warranty on the stainless steel heat exchanger and a 12 year warranty on other components.

(Some limitations apply; see printed warranty for details.)

## **RELIABILITY YOU CAN TRUST**

Heat Controller, Century's parent company, has been in the furnace business since its founding in 1933—in fact, the company can trace its roots the Wingert Furnace Co., which began building coal, gas and oil furnaces in 1907. Air conditioning equipment was later added to round out the product line.

Known today for efficient, reliable equipment for both heating and cooling, Century continues to keep homes, businesses and industries comfortable, season after season.

**For year 'round comfort, ask your dealer about the *Century* line of energy efficient central air conditioning**

# UPFLOW/HORIZONTAL GMUH MODELS

## PHYSICAL AND DATA SPECIFICATIONS

MODEL GMUH	50-E3A	75-E3A	75-E4A	100-E3A	100-E5A	125-E5A	150-E5A
INPUT-BTU/HR	50,000	75,000	75,000	100,000	100,000	125,000	150,000
HEATING CAPACITY BTU/HR.	41,000	60,000	60,000	80,000	80,000	99,000	119,000
HEAT EXT. STATIC PRESSURE	.10	.12	.12	.15	.15	.20	.20
BLOWER (D x W)	11 x 6	11 x 6	11 x 7	11 x 7	11 x 10	11 x 10	11 x 10
MOTOR H.P./SPEEDS/TYPE	1/2-4-PSC	1/2-3-PSC	1/2-3-PSC	1/2-3-PSC	3/4-3-PSC	3/4-3-PSC	3/4-3-PSC
MOTOR FULL LOAD AMPS	6.8	5.8	7.9	7.1	9.5	9.5	9.5
HEATING SPEED	MED-LOW	MED	MED	MED	LOW	LOW	LOW
COOLING SPEED	HIGH	HIGH	HIGH	HIGH	MED	MED	MED
COOLING CFM @ .5" E.S.P. (NOMINAL)	1200	1200	1600	1200	2060	2115	2080
MAX. EXT. STATIC PRESSURE (IN.)	.50	.50	.50	.50	.50	.50	.50
TEMPERATURE RISE RANGE °F	25-55	40-70	25-55	50-80	40-70	35-65	50-80
APPROX. SHIPPING WEIGHT (LBS.)	85	105	105	115	120	140	150
RETURN AIR CABINETS (OPT.) 7603-	638	639	639	639	640	641	641
FILTER SIZE	(2) 12 x 16	(2) 12 x 16	(2) 12 x 16	(2) 12 x 16	(2) 20 x 16	(2) 24 x 16	(2) 24 x 16
EXTERNAL FILTER RACK (OT.)	7603-644	7603-644	7603-644	7603-644	7603-644	7603-644	7603-644
FILTER SIZE	15 <sup>3</sup> / <sub>4</sub> x 25	15 <sup>3</sup> / <sub>4</sub> x 25	15 <sup>3</sup> / <sub>4</sub> x 25	15 <sup>3</sup> / <sub>4</sub> x 25	19 <sup>1</sup> / <sub>4</sub> x 25	22 <sup>3</sup> / <sub>4</sub> x 25	22 <sup>3</sup> / <sub>4</sub> x 25
AFUE-H.S.I. MODELS ①	81.4%	80.6%	80.5%	80%	80.0%	80.0%	80.0%

NOTES: All models are 115V, 60HZ, 1 Phase. Gas connection size for all models is 1/2" N.P.T.

① In accordance with D.O.E. test procedures. IMPORTANT: The GMUH series is not approved for use in mobile homes.

## UPFLOW/HORIZONTAL GMUH DIMENSIONS

### TABLE 1. DIMENSIONS AND CLEARANCE TO COMBUSTIBLE MATERIAL (INCHES)

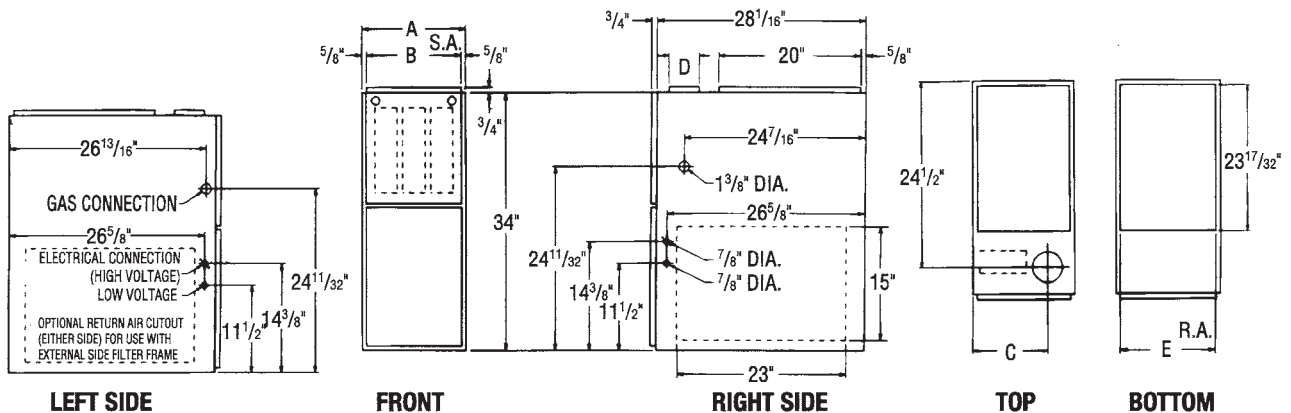
MODEL GMUH	A	B	C	D	E	REDUCED CLEARANCES (IN.)					
						LEFT SIDE	RIGHT SIDE	BACK	TOP	FRONT	VENT
50	14	12 <sup>27</sup> / <sub>32</sub>	10 <sup>3</sup> / <sub>8</sub>	Ⓐ	11 <sup>1</sup> / <sub>2</sub>	0	4 <sup>Ⓑ</sup>	0	1	6	6 <sup>Ⓒ</sup>
75	17 <sup>1</sup> / <sub>2</sub>	16 <sup>11</sup> / <sub>32</sub>	12 <sup>1</sup> / <sub>8</sub>	Ⓐ	15	0	3 <sup>Ⓑ</sup>	0	1	6	6 <sup>Ⓒ</sup>
100-(X)3	17 <sup>1</sup> / <sub>2</sub>	16 <sup>11</sup> / <sub>32</sub>	12 <sup>1</sup> / <sub>8</sub>	Ⓐ	15	0	3 <sup>Ⓑ</sup>	0	1	6	6 <sup>Ⓒ</sup>
100-(X)5	21	19 <sup>27</sup> / <sub>32</sub>	13 <sup>7</sup> / <sub>8</sub>	Ⓐ	18 <sup>1</sup> / <sub>2</sub>	0	0	0	1	6	6 <sup>Ⓒ</sup>
125	24 <sup>1</sup> / <sub>2</sub>	23 <sup>11</sup> / <sub>32</sub>	15 <sup>5</sup> / <sub>8</sub>	Ⓐ	22	0	0	0	1	6	6 <sup>Ⓒ</sup>
150	24 <sup>1</sup> / <sub>2</sub>	23 <sup>11</sup> / <sub>32</sub>	15 <sup>5</sup> / <sub>8</sub>	Ⓐ	22	0	0	0	1	6	6 <sup>Ⓒ</sup>

NOTES: Ⓐ) Vent connection as shipped from the factory is 3". Certain installations may require a 3" to 4" or 3" to 5" adaptor.

Ⓑ) May be 0" with type "B" vent.

Ⓒ) May be 1" with type "B" vent.

**Furnaces must be vented in accordance with AGA/GAMA rating guidelines included with each furnace and in accordance with local codes.**

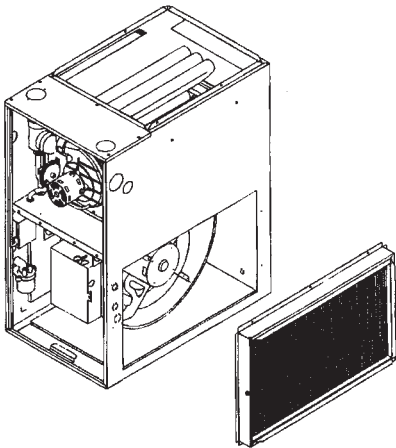


**WARNING: DO NOT INSTALL HORIZONTAL FURNACE ON ITS BACK - EITHER SIDE ONLY**

# BLOWER PERFORMANCE DATA - GMUH

MODEL NO.	BLOWER SIZE	MOTOR H.P.	BLOWER SPEED	CFM AIR DELIVERY						
				EXTERNAL STATIC PRESSURE INCHES WATER COLUMN						
				0.1	0.2	0.3	0.4	0.5	0.6	0.7
50-E3A	11 x 6	1/2	LOW	675	655	635	610	585	555	520
			MED-LO	950	930	905	880	860	830	800
			MED-HI	1115	1090	1070	1040	1015	985	945
			HIGH	1270	1250	1225	1200	1165	1130	1085
75-E3A	11 x 6	1/2	LOW	970	955	940	910	880	845	805
			MED	1110	1090	1070	1040	1010	975	935
			HIGH	1265	1240	1210	1175	1140	1100	1055
75-E4A	11 x 7	1/2	LOW	1245	1220	1195	1165	1135	1105	1065
			MED	1555	1515	1475	1435	1395	1350	1300
			HIGH	1810	1755	1705	1645	1585	1530	1470
100-E3A	11 x 7	1/2	LOW	1050	1040	1030	990	960	920	890
			MED	1220	1195	1160	1140	1105	1060	1020
			HIGH	1410	1380	1345	1300	1255	1205	1150
100-E5A	11 x 10	3/4	LOW	1645	1615	1580	1550	1510	1465	1425
			MED	2045	2000	1955	1905	1845	1785	1720
			HIGH	2320	2260	2200	2130	2060	1985	1910
125-E5A	11 x 10	3/4	LOW	1645	1635	1615	1590	1560	1520	1470
			MED	2050	2015	1980	1935	1885	1835	1775
			HIGH	2365	2310	2250	2185	2115	2035	1950
150-E5A	11 x 10	3/4	LOW	1620	1595	1570	1545	1515	1480	1440
			MED	2010	1985	1960	1915	1850	1800	1730
			HIGH	2340	2275	2215	2145	2080	2010	1940

## UPFLOW/HORIZONTAL GMUH ACCESSORIES

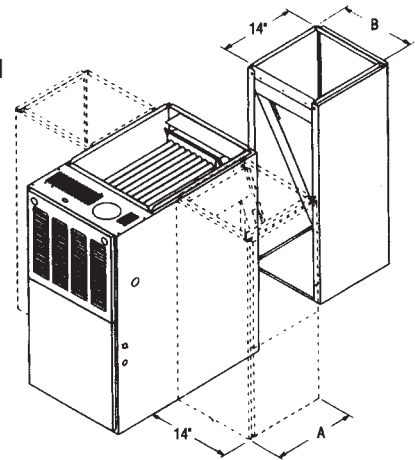


SEE PHYSICAL DATA FOR FURNACE MODEL MATCH

EXTERNAL FILTER FRAME	FILTER SIZE
7603-644	Adjustable from 15 <sup>3</sup> / <sub>4</sub> x 25 to 22 <sup>3</sup> / <sub>4</sub> x 25

NOTE: Filters not supplied with filter frame

INTERNAL FILTER FRAME
HXGF-DA



### WARNING: IMPORTANT NOTICE

A SOLID METAL BASE PLATE (SEE TABLE) MUST BE IN PLACE WHEN THE FURNACE IS INSTALLED WITH SIDE OR REAR AIR RETURN DUCTS. FAILURE TO INSTALL A BASE COULD CAUSE PRODUCTS OF COMBUSTION TO BE CIRCULATED INTO THE LIVING SPACE AND CREATE POTENTIALLY HAZARDOUS CONDITIONS.

### ACCESSORY RETURN AIR CABINETS

Return Air Cabinets may be installed on rear or either side application except 7603-641 (side application must be on side opposite gas and electrical connection). The 7603-641 may be installed on rear or left side.

FURNACE WITH	SOLID BOTTOM KIT NO.
14	7603-94
17 <sup>1</sup> / <sub>2</sub>	7603-95
21	7603-96
24 <sup>1</sup> / <sub>2</sub>	7603-97

FOSSIL FUEL KIT
HXPF-F01
HXPF-F02 (TVA)

TWINNING KIT
HXGP-F03

L.P. KIT NO.
FP15-H
Universal Kit

RETURN AIR CABINETS	A	B	FILTER SIZE
7603-638	14	12 <sup>27</sup> / <sub>32</sub>	(2) 12 x 16
7603-639	17 <sup>1</sup> / <sub>2</sub>	16 <sup>11</sup> / <sub>32</sub>	(2) 12 x 16
7603-640	14	19 <sup>27</sup> / <sub>32</sub>	(2) 20 x 16
7603-641	24 <sup>1</sup> / <sub>2</sub>	23 <sup>11</sup> / <sub>32</sub>	(2) 24 x 16

# DOWNFLOW GMDA MODELS

## PHYSICAL AND DATA SPECIFICATIONS

<b>MODEL GMDA</b>	<b>50-E3A</b>	<b>75-E3A</b>	<b>75-E4A</b>	<b>100-E3A</b>	<b>100-E5A</b>	<b>125-E5A</b>	<b>150-E5A</b>
INPUT-BTU/HR	50,000	75,000	75,000	100,000	100,000	125,000	150,000
HEATING CAPACITY BTU/HR.	41,000	60,000	60,500	80,000	80,000	99,000	120,000
HEAT EXT. STATIC PRESSURE	.10	.12	.12	.15	.15	.20	.20
BLOWER (D x W)	11 x 6	11 x 6	11 x 7	11 x 7	11 x 10	11 x 10	11 x 10
MOTOR H.P./SPEEDS/TYPE	1/2-4-PSC	1/2-3-PSC	1/2-3-PSC	1/2-3-PSC	3/4-3-PSC	3/4-3-PSC	3/4-3-PSC
MOTOR FULL LOAD AMPS	6.8	5.8	7.9	7.1	9.5	9.5	9.5
HEATING SPEED	MED-LOW	MED	MED	MED	LOW	LOW	LOW
COOLING SPEED	HIGH	HIGH	HIGH	HIGH	MED	MED	MED
COOLING CFM @ .5" E.S.P. (NOMINAL)	1200	1200	1600	1200	2060	2185	2145
MAX. EXT. STATIC PRESSURE (IN.)	.50	.50	.50	.50	.50	.50	.50
TEMPERATURE RISE RANGE °F	25-55	40-70	25-55	45-75	40-70	40-70	50-80
APPROX. SHIPPING WEIGHT (LBS.)	85	105	105	115	120	140	150
AFUE-H.S.I. MODELS ①	82.2%	80.5%	81.1%	80.2%	80%	80%	80%

NOTES: All models are 115V, 60HZ, 1 Phase. Gas connection size for all models is 1/2" N.P.T.

① In accordance with D.O.E. test procedures.

IMPORTANT: The GMDA series is not approved for use in mobile homes.

## DOWNFLOW GMDA DIMENSIONS

**TABLE 1. DIMENSIONS AND CLEARANCE TO COMBUSTIBLE MATERIAL (INCHES)**

### TABLE DIMENSIONS

<b>MODEL GMDA</b>	<b>A</b>	<b>B</b>	<b>C</b>	<b>D</b>	<b>E</b>	<b>REDUCED CLEARANCES (IN.)</b>					
						<b>LEFT SIDE</b>	<b>RIGHT SIDE</b>	<b>BACK</b>	<b>TOP</b>	<b>FRONT</b>	<b>VENT</b>
50	14	12 <sup>27/32</sup>	10 <sup>3/8</sup>	Ⓐ	13 <sup>1/8</sup>	0	4 Ⓑ	0	1	6	6 Ⓒ
75	17 <sup>1/2</sup>	16 <sup>11/32</sup>	12 <sup>1/8</sup>	Ⓐ	16 <sup>5/8</sup>	0	3 Ⓑ	0	1	6	6 Ⓒ
100-(X)3	17 <sup>1/2</sup>	16 <sup>11/32</sup>	12 <sup>1/8</sup>	Ⓐ	16 <sup>5/8</sup>	0	3 Ⓑ	0	1	6	6 Ⓒ
100-(X)5	21	19 <sup>27/32</sup>	13 <sup>7/8</sup>	Ⓐ	20 <sup>1/8</sup>	0	0	0	1	6	6 Ⓒ
125	24 <sup>1/2</sup>	23 <sup>11/32</sup>	15 <sup>5/8</sup>	Ⓐ	23 <sup>5/8</sup>	0	0	0	1	6	6 Ⓒ
150	24 <sup>1/2</sup>	23 <sup>11/32</sup>	15 <sup>5/8</sup>	Ⓐ	23 <sup>5/8</sup>	0	0	0	1	6	6 Ⓒ

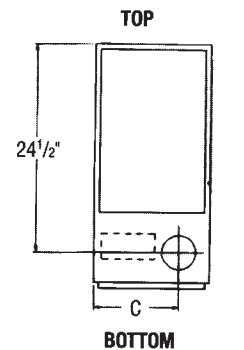
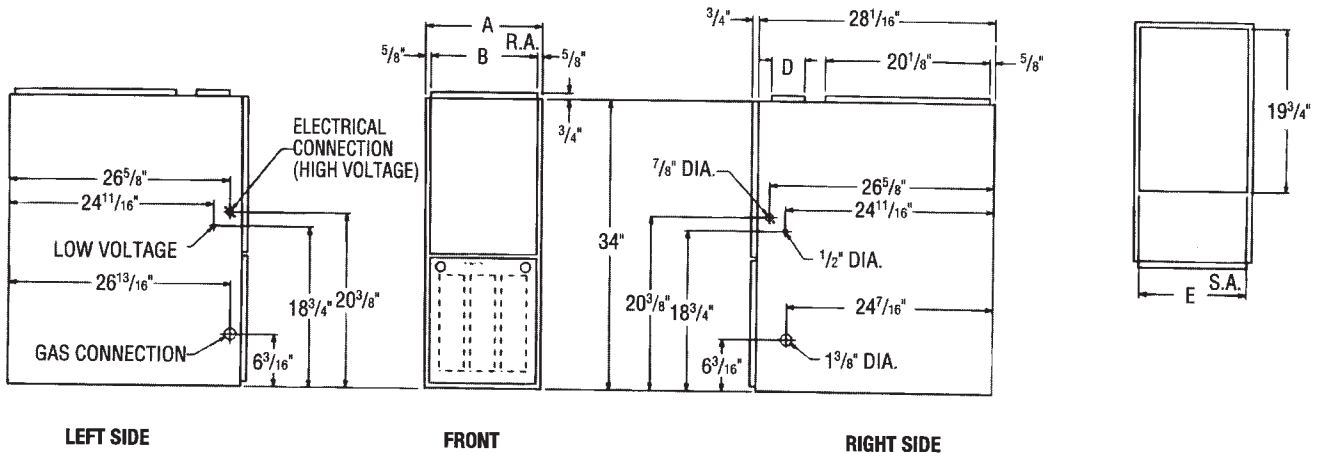
NOTES: Ⓐ Vent connection as shipped from the factory is 3".

Certain installations may require a 3" to 4" or 3" to 5" adaptor.

Ⓑ May be 0" with type "B" vent.

Ⓒ May be 1" with type "B" vent.

Furnaces must be vented in accordance with AGA/GAMA rating guidelines included with each furnace and in accordance with local codes.



# BLOWER PERFORMANCE DATA - GMDA

MODEL NO.	BLOWER SIZE	MOTOR H.P.	BLOWER SPEED	CFM AIR DELIVERY						
				EXTERNAL STATIC PRESSURE INCHES WATER COLUMN						
				0.1	0.2	0.3	0.4	0.5	0.6	0.7
50-E3A	11 x 6	1/2	LOW	735	715	690	660	635	605	575
			MED-LO	1025	1015	995	975	955	930	905
			MED-HI	1185	1165	1150	1130	1100	1075	1040
			HIGH	1345	1330	1310	1295	1265	1235	1205
75-E3A	11 x 6	1/2	LOW	990	975	955	935	905	875	835
			MED	1140	1125	1105	1080	1050	1020	980
			HIGH	1300	1290	1265	1245	1215	1180	1140
75-E4A	11 x 7	1/2	LOW	1210	1205	1195	1180	1165	1155	1130
			MED	1580	1560	1550	1530	1495	1465	1430
			HIGH	1915	1880	1825	1790	1740	1675	1600
100-E3A	11 x 7	1/2	LOW	1070	1055	1040	1010	980	945	905
			MED	1240	1210	1190	1165	1135	1095	1055
			HIGH	1420	1395	1370	1340	1305	1265	1220
100-E5A	11 x 10	3/4	LOW	1690	1670	1655	1615	1585	1565	1525
			MED	-	2085	2055	2005	1970	1945	1880
			HIGH	-	2410	2355	2305	2240	2165	2100
125-E5A	11 x 10	3/4	LOW	-	1690	1660	1635	1580	1535	1480
			MED	-	2090	2035	1985	1930	1850	1785
			HIGH	-	2395	2335	2260	2185	2080	1965
150-E5A	11 x 10	3/4	LOW	1675	1650	1620	1570	1545	1485	1425
			MED	2105	2075	2035	1990	1955	1900	1815
			HIGH	-	-	-	-	-	-	-

## DOWNFLOW GMDA ACCESSORIES

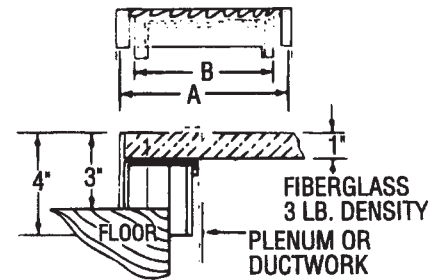
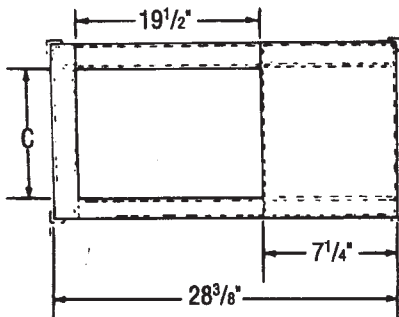
### COMBUSTIBLE FLOOR BASE DIMENSIONS

Base must be used if furnace installed on combustible flooring.

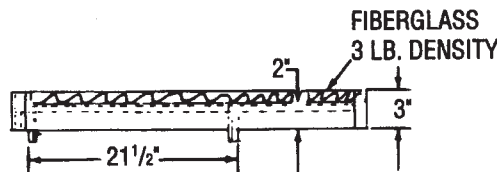
COMBUSTIBLE FLOOR BASE	USE WITH MBH INPUT FURNACE SIZES	A	B	C
7603-99	GMDA-50	14 <sup>1</sup> / <sub>2</sub>	13 <sup>3</sup> / <sub>4</sub>	11 <sup>1</sup> / <sub>4</sub>
7603-100	GMDA 75 & 100-(X)3	18	16 <sup>3</sup> / <sub>4</sub>	14 <sup>3</sup> / <sub>4</sub>
7603-101	GMDA-100-(X)5	21 <sup>1</sup> / <sub>2</sub>	20 <sup>1</sup> / <sub>4</sub>	18 <sup>1</sup> / <sub>4</sub>
7603-102	GMDA 125 & 150	25	23 <sup>3</sup> / <sub>4</sub>	21 <sup>3</sup> / <sub>4</sub>

L.P. KIT NO.
FP15-H Universal Kit

FOSSIL FUEL KIT
HXPF-F01
HXPF-F02 (TVA)



NOTE: FLOOR OPENING 21<sup>1</sup>/<sub>2</sub> x B  
MAX. PLENUM SIZE 19<sup>1</sup>/<sub>2</sub> x C



### COIL CABINET

MODEL	USE WITH FURNACE MODEL GMDA
DCC-21	50, 75 & 100 (X) 3
DCC-24A	100 (X) 5, 125 & 150

INTERNAL FILTER FRAME
HXGF-DB

EXTERNAL FILTER FRAME
HXGF-CC

TWINNING KIT
HXGP-F03

NOTE: Filter frames shipped without filters.

# Space Saving, Energy Saving Gas Heat Source

## TUBULAR HEAT EXCHANGER

The heart of the furnace, this patented design is made of stainless steel and aluminized steel, and carries a 20-year warranty

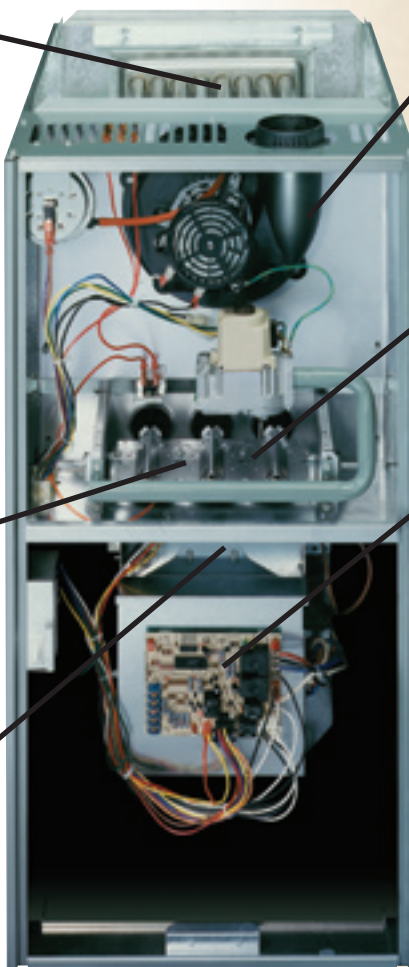


## IN-SHOT BURNER

Engineered to deliver to most efficient air/gas mixture, it allows more heat to be transferred to the home more efficiently

## HIGH EFFICIENCY BLOWER

Direct drive blower system directs warm, filtered air through the ductwork to each room and has no belts or pulleys to wear out



## INDUCED DRAFT BLOWER

Designed specifically to work with the tubular heat exchanger, it pulls hot combustion gases through the exchanger until the burner cycles off; heated air is locked in while cold air is locked out

## ELECTRONIC IGNITION

Quiet and automatic, it eliminates the need for a standing pilot light for improved efficiency

## INTEGRATED CONTROL BOARD

Combining all controls and functions into one board makes the furnace easy to install, and also makes it simple to add comfort options like central air conditioning

## DURABLE CABINET

Prepainted galvanized steel cabinet resists corrosion

*NOTE: Upflow model is pictured; features of the downflow model are identical although component arrangement differs.*



## STANDARD EQUIPMENT FOR UPFLOW/HORIZONTAL & DOWNFLOW

Furnaces come completely assembled and wired. The heat exchanger is stainless steel. Includes draft inducer; pressure switch; redundant main gas control; blower compartment door safety switch; solid state on/off blower control; manual shut-off valve; pressure regulator for natural and L.P. (propane) gases; transformer; direct drive, multi-speed blower motor. Furnaces are equipped with cooling/heating relay and transformer (40VA) ready for air conditioning applications. (A thermostat is not included as standard equipment.)

**Upflow/Horizontal Models**—For utility room, closet, alcove, crawl space, attic or basement applications.

**Downflow Models**—For homes without a basement or crawlspace; can be used in utility room, closet, attic or similar space.

All models can be converted by a qualified distributor or local service dealer to L.P. (propane) gas without changing burners. Factory approved kits must be used to convert from natural to L.P. gas.

**Century**

**A.F.U.E. Ratings of 80% or better mean energy savings for you!**

***There's a Century 80% gas furnace  
that's right for your home's heating needs***

<b>MODELS</b>	<b>INPUT BTUH</b>	<b>HEATING CAP. BTUH</b>	<b>AFUE*</b>	<b>NOM. TONS COOLING</b>	<b>MOTOR HP</b>	<b>DIMENSIONS H X W X D (INCHES)</b>	<b>SHIPPING WEIGHT</b>
<b>UPFLOW/HORIZONTAL</b>							
GMUH50-E3A	50,000	41,000	81.4%	3	1/2	34 x 14 x 28 <sup>13</sup> / <sub>16</sub>	85
GMUH75-E3A	75,000	60,000	80.6%	3	1/2	34 x 17 <sup>1</sup> / <sub>2</sub> x 28 <sup>13</sup> / <sub>16</sub>	105
GMUH75-E4A	75,000	60,000	80.5%	4	1/2	34 X 17 <sup>1</sup> / <sub>2</sub> X 28 <sup>13</sup> / <sub>16</sub>	105
GMUH100-E3A	100,000	80,000	80.0%	3	1/2	24 x 17 <sup>1</sup> / <sub>2</sub> x 28 <sup>13</sup> / <sub>16</sub>	115
GMUH100-E5A	100,000	80,000	80.0%	5	3/4	34 x 21 x 28 <sup>13</sup> / <sub>16</sub>	120
GMUH125-E5A	125,000	99,000	80.0%	5	3/4	34 x 24 <sup>1</sup> / <sub>2</sub> x 28 <sup>13</sup> / <sub>16</sub>	140
GMUH150-E5A	150,000	119,000	80.0%	5	3/4	34 x 24 <sup>1</sup> / <sub>2</sub> x 28 <sup>13</sup> / <sub>16</sub>	150
<b>UPFLOW/HORIZONTAL</b>							
GMUH50-E3A	50,000	41,000	82.2%	3	1/2	34 x 14 x 28 <sup>13</sup> / <sub>16</sub>	85
GMUH75-E3A	75,000	60,000	80.5%	3	1/2	34 x 17 <sup>1</sup> / <sub>2</sub> x 28 <sup>13</sup> / <sub>16</sub>	105
GMUH75-E4A	75,000	60,000	81.1%	4	1/2	34 X 17 <sup>1</sup> / <sub>2</sub> X 28 <sup>13</sup> / <sub>16</sub>	105
GMUH100-E3A	100,000	80,000	80.2%	3	1/2	24 x 17 <sup>1</sup> / <sub>2</sub> x 28 <sup>13</sup> / <sub>16</sub>	115
GMUH100-E5A	100,000	80,000	80.0%	5	3/4	34 x 21 x 28 <sup>13</sup> / <sub>16</sub>	120
GMUH125-E5A	125,000	99,000	80.0%	5	3/4	34 x 24 <sup>1</sup> / <sub>2</sub> x 28 <sup>13</sup> / <sub>16</sub>	140
GMUH150-E5A	150,000	120,000	80.0%	5	3/4	34 x 24 <sup>1</sup> / <sub>2</sub> x 28 <sup>13</sup> / <sub>16</sub>	150

\* Annual Fuel Utilization Efficiency (A.F.U.E.) rating is your guide for comparing gas furnace efficiencies. The higher the number, the more efficient the furnace. Replacing an older gas furnace with a higher efficiency model such as the Century 80% unit can result in significant energy savings.

Your Century dealer can help you select the model that fits your heating requirements. He can also recommend options such as central air conditioning to create a system for total comfort, and can provide quality installation and maintenance for your new system.

**Specifications and performance data subject to change without notice.**

**HEAT CONTROLLER, INC.**

1900 WELLWORTH AVE., JACKSON, MICHIGAN 49203 • Ph. 517-787-2100 • FAX 517-787-9341

**THE QUALITY LEADER IN CONDITIONING AIR**

***visit us at [www.heatcontroller.com](http://www.heatcontroller.com)***

Printed in U.S.A.

©2007 Heat Controller, Inc. All rights reserved