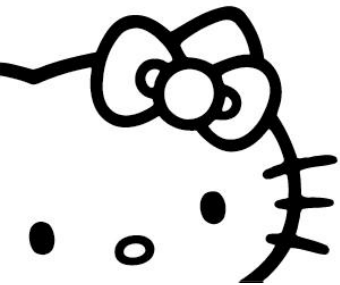


# Hello Kitty Cordless Hand Vacuum

Item # APP-23209

*Owner's Manual*



**HELLO KITTY®**

## Important Safety Precautions

When using any electrical appliance, basic safety precautions should always be followed, including the following:

1. Before first using your vacuum, check for defective parts or damage. Make sure that none of the parts are broken, and that none of the switches are damaged.
2. This appliance is not a toy. Pay close attention when using this appliance by or near children. Please keep it away from children or the infirm.
3. Do not charge or use this appliance outdoors.
4. Only use attachments and accessories recommended by the manufacturer.
5. Only use the charger supplied with this appliance.
6. Only insert the charger's plug into a standard household power outlet.
7. Clean your vacuum regularly or immediately after using it for more demanding tasks.
8. Do not power on and use this appliance without its dust filter and dust bowl attached.
9. When disconnecting the charger from a power outlet, always pull the base of the charger from the outlet. Never pull the power supply by its cord.
10. Do not use your handheld vacuum cleaner if it has been dropped, damaged or if it has fallen in water. Refer to a qualified service technician if it requires repair.
11. Do not use your handheld vacuum cleaner if its opening is blocked or even partially blocked. Keep it free of hair, lint and anything that may block or reduce air flow.
12. Keep loose clothing, hair, fingers and all body parts away from the openings.
13. Do not attempt to change accessories while the unit is powered on.
14. Do not use the hand vacuum cleaner for vacuuming liquids.
15. Do not vacuum anything that is smoking or burning, such as hot ashes, or cigarettes. Additionally, do not vacuum flammable or combustible liquids such as paint thinner, or gasoline. Do not use in areas where these liquids may be present or stored.
16. Do not use your handheld vacuum cleaner for purposes other than those described in this manual.
17. Do not use the charger if any of its parts are damaged or defective.

18. Do not attempt to repair this unit or its charger. Contact an authorized technician for service or adjustments.
19. Do not disassemble your vacuum cleaner or its charger. There are no serviceable parts inside the unit.
20. Your handheld vacuum cleaner is only suitable for use on dry surfaces. It is not suitable for foam, water, flammable and explosive substances or other liquids.
21. Do not use the handheld vacuum cleaner, when it is broken or has malfunctioned.
22. When your vacuum cleaner is not in use it should be stored in a dry, secure location away from children.

## **SAVE THESE INSTRUCTIONS. FOR HOUSEHOLD USE ONLY.**

### **Intended Usage**

Your cordless hand vacuum cleaner may only be used for the vacuuming of dry surfaces. People or animals may not be vacuumed with this appliance. Any other usage or changes to the appliance are improper use and may result in considerable danger of injury. The manufacturer accepts no liability for damages that result from improper use of the appliance or are caused by incorrect operation of it. The appliance is not intended for commercial or industrial use.

#### **Note:**

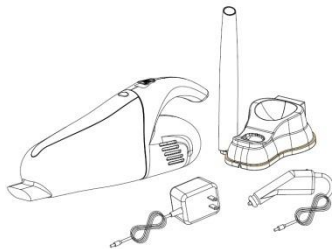
This is not a wet/ dry vacuum. Do not try to pick up water or flammable, combustible liquids/objects with this handheld vacuum cleaner.

## Introduction

Thank you for purchasing the APP-23209 Hello Kitty Cordless Hand Vacuum. You can use this device in order to stay neat and tidy wherever you go. Please read this manual carefully **FIRST** in order to get the most out of your device.

## Package Contents

1. Hello Kitty Cordless Hand Vacuum
2. Extension Tube
3. Wall Charger
4. Car Charger
5. Vacuum Holder
3. Owner's Manual with Warranty Information



## Specifications

Model no.: APP-23209

Motor: DC 12.0 Volt

Power: 110 Watts

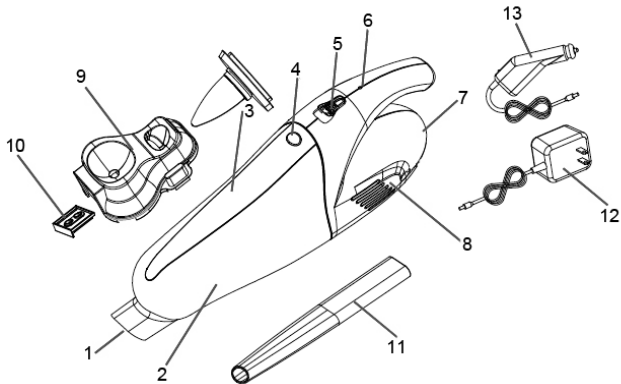
Sealed NI-CD Battery: 1x 6-Volt 1300mAh Battery

AC Adapter: *input: 120v AC, 60HZ, 5W, 45MA Max Output: 9V DC, 200MA Max*

Car Charger: *Input 12V DC, Output: 200MA Max*

## A Quick Look at Your Device

1. Nozzle
2. Dust Bowl
3. Filter Bracket and Dust Filter
4. Latch (locks and unlocks the dust bowl)
5. ON/OFF Switch
6. Charging LED Light
7. Battery Charging Socket
8. Exhaust Air Vent (Left and Right Sides)
9. Vacuum Holder
10. Mounting Piece (attaches to vacuum holder)
11. Extension Tube
12. Wall Charger
13. Car Charger



## Using the Vacuum Holder and Charging the Battery

The included vacuum holder can be mounted on a wall near a power outlet to provide a convenient storage and charging point for the vacuum cleaner. In order to do so, please follow the steps below:

1. Locate a suitable indoor table top, or wall location near an electrical power outlet. Be sure that it is out of the reach of children.
2. Be sure that there are no hidden electrical wires or water pipes in the selected wall mounting area.
3. Do not mount the charging cradle in direct sunlight or close to a heating source. Always be sure to keep the hand vacuum cleaner and its holder away from heating elements, ovens or other heated appliances and surfaces.
4. Always be sure that the exhaust air vents are open. Blockage can result in overheating and damage to the appliance.
5. Insert one end of the wall charger in through the bottom of the vacuum holder, and twist it so that it locks in place, so that when you place your vacuum on the holder, the charger goes into the battery charging socket on the backside of the vacuum cleaner.
6. Plug the other end of the wall charger to a power outlet.
7. Make sure the vacuum is powered off and place it on the vacuum holder. The charging LED light will turn red to indicate charging.
8. When not in use, the vacuum cleaner should be stored in the charging cradle. This will ensure that the cleaner remains fully charged up and always ready for action.
9. This product contains a rechargeable sealed NI-CD battery. Do not throw the battery into a fire and do not expose the vacuum to high temperatures. There is a risk of explosion!

### **Notes:**

- Your handheld vacuum cleaner is powered by a rechargeable sealed NI-CD battery. When using your vacuum, place it back in the vacuum holder in order to recharge the battery. The vacuum cleaner will run for maximum operational time only if it has been fully charged.
- It is recommended that the battery be fully drained, then fully recharged every 30~40 days. Only after charging and discharging the battery 2-3 times will you be able to get maximum performance.

-The charging LED light will stay on when the vacuum is placed securely in the holder to indicate that the battery is charging.

-If the suction power of the vacuum becomes weak or ineffective; you may need to recharge the battery.

## Using Your Cordless Hand Vacuum

In order to use your vacuum, you will first need to remove it from the vacuum holder. Once you do this, follow the steps below:

**-Powering ON and Powering OFF Your Vacuum:** Push the ON/OFF switch forward to power on your vacuum, pull it in the opposite direction to power it off.

**-Attach the Extension Tube:** You can attach the included extension tube by inserting it into the nozzle of your vacuum. The extension tube allows you to better reach corners and hard to reach places.

NOTE: Picking up hairs, pet hairs, cotton and other threads may clog up the filter. If this happens tap and clean the filter over a dustbin or wash the filter with lightly warm water.

**WARNING:** In order to avoid injury, do not point the vacuum towards other people or animals while it is powered on.

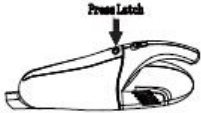
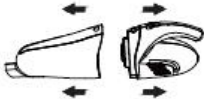
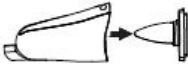


## Cleaning and Maintenance

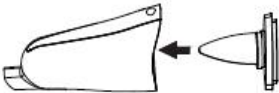
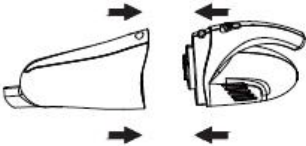
- The dust bowl and filter should be cleaned and dried completely after each use.
- Do not use abrasive, chemical or solvent based cleaners on any part of the vacuum.
- Clean the plastic surface with a dampened soft cloth, using mild hand soap if needed.
- Clean the filter with lightly warmed water and dry completely before reinserting it into the dust bowl.
- Do not attempt to disassemble the vacuum. Contact an authorized technician if the unit needs repair.
- Do not use the vacuum without the dust bowl and filter securely in place.
- Do not use the vacuum to pick up water/liquids.
- The suction nozzle must be open and free of any obstructions at all times, or else the motor can overheat and could become damaged.
- Power off the vacuum before recharging the battery.
- Regularly inspect the cleaner and the charger for damage. Do not use it if damage or faults are found.

**IMPORTANT NOTE:** Do not attempt to remove the battery from the vacuum cleaner.

### Removing the Dust Bowl, Filter Bracket and Dust Filter

		
<p>Make sure that the ON/OFF switch is in the off position. Press the latch to unlock the dust bowl.</p>	<p>Remove the dust bowl carefully to avoid spilling any dust or debris.</p>	<p>Remove the dust filter and filter bracket from the dust bowl. Clean the dust filter as needed.</p>

### Reattaching the Dust Bowl, Filter Bracket and Dust Filter

	
<p>Slide the dust filter and filter bracket back into the dust bowl.</p>	<p>Reattach the dust bowl, making sure the latch snaps back into place securely.</p>

## Troubleshooting

**Problem:**

The vacuum does not power on.

**Possible Cause:**

The battery is not charged.

**Possible Solution:**

Place the vacuum in the vacuum holder to recharge the battery.

**Problem:**

The vacuum's suction power is weak, and it is not picking up dirt and debris.

**Possible Cause:**

The battery power may be low, the dust filter may be clogged, the dust bowl might be full, or the nozzle might be partially blocked.

**Possible Solutions:**

Recharge the battery, clean the dust filter, empty and clean the dust bowl, or remove objects from the nozzle.

**Problem:**

Dust is leaking from the vacuum cleaner.

**Possible Cause:**

The dust bowl may be full or not securely attached to the body of the vacuum cleaner.

**Possible Solutions:**

First empty and clean the dust bowl. Then reattach it to the body of the vacuum cleaner, making sure that the latch button snaps it into place.

## Technical Support

For technical support issues please visit our website at [www.sakar.com](http://www.sakar.com). You can find manuals, software and FAQ's at the website. Can't find what you are looking for? Fill out an online ticket and one of our technical support team members will answer questions or call 1-877-397-8200 in the U.S. or 0-800-917-4831 in the UK to access our technical support information on the phone.

# Sakar Warranty Card

## Sakar Warranty

This warranty covers the original consumer purchaser only and is not transferable.

This warranty covers products that fail to function properly **UNDER NORMAL USAGE**, due to defects in material or workmanship. Your product will be repaired or replaced at no charge for parts or labor for a period of one year.

## What Is Not Covered by Warranty

Damages or malfunctions not resulting from defects in material or workmanship and damages or malfunctions from other than normal use, including but limited to, repair by unauthorized parties, tampering, modification or accident.

## What To Do When Service Is Required

When returning your defective product (postage pre-paid) for service, your package should include:

1. Copy of original bill of sale
2. A detailed written description of the problem.
3. Your return address and telephone number (Daytime)

MAIL TO ADDRESS BELOW:

In the U.S.

Sakar International  
Attention: Service Department  
195 Carter Drive  
Edison, NJ 08817

In the U.K.

Sakar UK  
2D Siskin Parkway East  
CV3 4PE, UK

You may also visit [www.sakar.com](http://www.sakar.com) for further assistance if necessary or call our technical support department toll free at 1-877-397-8200 in the US, or 0-800-917-4831 in the UK.

This device complies with the part 15 of the FCC rules. Operation is subject to the following two conditions:(1) this device may not cause harmful interference , and (2) this device must accept any interference received, including interference that may cause undesired operation.

Caution: changes or modifications not expressly approved by the party responsible for compliance could void the user's authority to operate the equipment.

NOTE: This equipment has been tested and found to comply with the limits for a Class B digital device, pursuant to Part 15 of the FCC Rules, These limits are designed to provide reasonable protection against harmful interference in a residential installation. This equipment generates. Uses and can radiate radio frequency energy and, if not installed and used in accordance with instructions. May cause harmful interference to radio or -television reception, which can be determined by turning the equipment off and on, the user is encouraged to try to correct the interference by one or more of the following measures:

- Reorient or relocate the receiving antenna.
- Increase the separation between the equipment and receiver.
- Connect the equipment into an outlet on a circuit different from that to which the receiver is connected.
- Consult the dealer or experienced radio/ TV technician for help.

A00-070713

## Battery and Appliance Disposal

Dispose of the battery, the appliance, packing material and accessories only at specified collection points. Follow the regional and national disposal requirements with regard to the separation of material, waste collection and recyclable material depots.

- Before disposing of the handheld vacuum cleaner, switch it on and allow it to operate until the motor completely ceases to run, so that the batteries will be fully discharged.
- Dispose of the appliance/charger itself as electrical industry waste via public collection points.



©1976, 2012 SANRIO CO., LTD.

© 2012 Sakar International, Inc. All rights reserved.

All other trademarks are the property of their respective companies