



**Cordless Floor  
Polisher  
Model CFP500**



**Care and Use Instructions**

Earlex Inc  
8261 Highway 73, Suite F,  
Stanley, N.C. 28164, USA

**Toll Free:** 888-783-2612 **Email:** [enquiries@ewbankusa.com](mailto:enquiries@ewbankusa.com) **Website:** [www.ewbankusa.com](http://www.ewbankusa.com)



Thank you for purchasing your Ewbank Cordless Floor Polisher, we hope you enjoy using it.

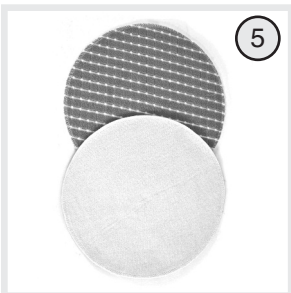
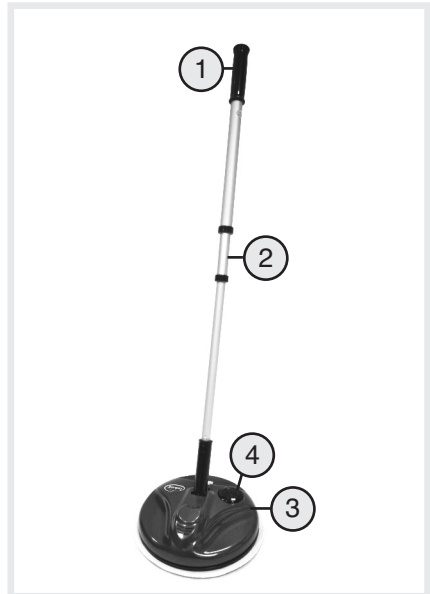
Please read the manual carefully to get the most out of your product.

**Pack Contents:**

- |                                  | <b>Part No.</b> |
|----------------------------------|-----------------|
| 1 - Handle                       | n/a             |
| 2 - Extension Tube               | n/a             |
| 3 - Cordless Floor Polisher Unit | n/a             |
| 4 - On/Off Switch                | n/a             |
| 5 - Reversible Cleaning Pads x 2 | EB0487          |
| 6 - Battery Charger              | EB0497          |
| Input: 100-240VAC, 50/60Hz       |                 |
| Output: 7.2VDC MAX, 200mA        |                 |
| 7 - Rechargeable Battery         | EB0486          |
| Type: NiMH UM-3x5                |                 |
| Voltage: 6VDC                    |                 |

**Read the instruction book before using the Ewbank Cordless Floor Polisher and make sure that...**

- The battery charger cable is in perfect condition.
- All packaging materials are removed from the product.



## Safety Instructions - CAUTION

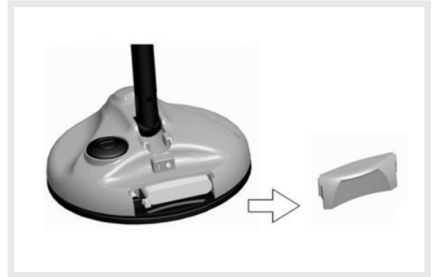


- Do not expose the product, battery or charger to extreme temperatures or moisture.
- Store in a cool dry place.
- Only operate the sweeper with the enclosed rechargeable battery and charger.
- Do not attempt to remove the rechargeable battery from the polisher when charging.
- Disconnect battery charger once the battery is completely charged.
- Never throw the rechargeable battery into open flames or burn it.
- Ensure the polisher is switched off at the on/off push - button switch when removing the cleaning pads.
- Do not clean the polisher during the charging process.
- This appliance can be used by children aged from 8 years and above and persons with reduced physical, sensory or mental capabilities or lack of experience and knowledge if they have been given supervision or instruction concerning use of the appliance in a safe way and understand the hazards involved. Children shall not play with the appliance. Cleaning and user maintenance shall not be made by children without supervision.
- Ensure fingers, hair, jewellery, etc. are kept away from the rotating parts.
- To protect the unit from overheating do not block rotation of the head.
- Do not use on burning or smoking objects such as cigarettes, matches or hot ash.
- Do not operate the appliance without the polishing pad in place.

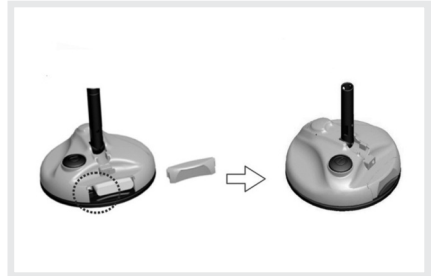
## Assembly

Protect all surfaces with a cover before commencing assembly.

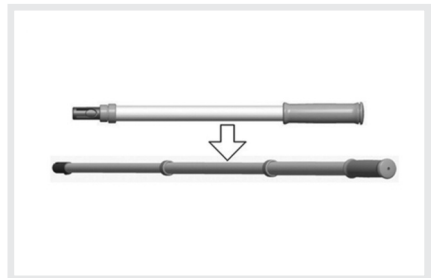
1. Open the battery compartment by sliding the cover in an upwards direction.



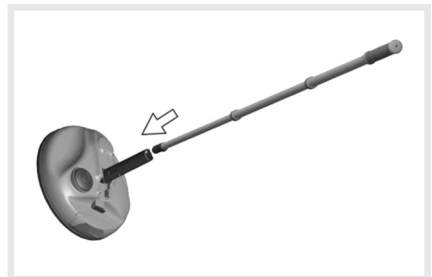
2. Insert the battery connector into the socket adjacent to the battery pack with the main unit and replace the battery compartment cover.



3. Twist the extension pole at the joints to extend to your required length.



4. Insert the extension pole into the bail securely.



## Charging the battery

**Please ensure the battery pack is connected to the unit before charging.**

The battery must be fully charged before the Cordless Floor Polisher is used for the very first time. The first charge may take 7-8 hours, with subsequent regular charging taking approx. 4 hours. The charging indicator located on the charger plug glows red whilst charging is in progress and will turn green once the battery is fully charged.

## Using your Cordless Floor Polisher



### **CAUTION - DO NOT USE THIS PRODUCT ON CARPET**

- Attach the polishing pad onto the grips located on the bottom of the rotating head, ensuring the pad is central to the head.
- Push the ON/OFF button to begin rotating head motion.
- To stop the head from rotating press the on/off switch or put the handle into a vertical upright position.
- When cleaning / polishing keep the rotating head moving across the floor surface at a gentle speed.
- Only use dedicated floor cleaning products. The recommended cleaner is Ewbank Floor Polish available from Ewbank stockists.
- Always follow the manufacturer's instructions for floor cleaning products.
- Use the textured front side of the pad to clean your floor.
- Use the reverse white side of the pad to buff and polish to a shine.
- When cleaning sensitive surfaces apply the polisher in the first instance to a small, less obvious area, i.e. the corner of a room.
- Ensure that no grit or sharp particles are stuck to the pad as these may cause damage to the floor surface.

## Cleaning and caring for your Cordless Floor Polisher

- Ensure charger unit is unplugged before cleaning the floor polisher unit.
- Clean the casing with a damp cloth and mild detergent.
- Dry the unit using a dry cloth.
- The cleaning pads are machine washable.
- If any dirt enters into the gap between the rotating head and the base of the unit, ensure the unit is switched off, clip off the rotating head first and remove the dirt.



## Battery replacement

Push Switch (4) off first and open the battery cover. Unplug battery lead gently from the socket and remove battery pack.

Please dispose of batteries responsibly at a recycling facility.

## Technical data

Operating time with full battery charge (depending on floor covering) - up to 40 minutes

Charging time with empty battery - typically 4 hours

Battery Voltage/ Capacity - 6V/1000mAH

Charger Model/Outlet - SW-072025/ 7.2V  200mA

Voltage/Frequency (Charger) - 100-240V AC 50/60Hz

Rated Consumption (Charger) - 200mAH

## Electrical Connection

This unit is a Class III battery-powered appliance which means it operates at SELV (Safety Extra Low Voltage).

This unit is supplied with a UL Listed approved Class II plug-in mains battery charger. If the output lead is damaged **DO NOT USE** for charging your CFP500 polisher. Instead, replace only with a new plug-in charger, Ewbank Part No. EB0497.

## Your Warranty

This product is guaranteed for a period of 12 months against faulty materials and workmanship.

While every possible care is taken by Ewbank Products Ltd to ensure that our products leave the factory in good working order, Ewbank Products Ltd cannot under any circumstances accept liability for problems or damage caused by their subsequent use. It is the responsibility of the user to ensure the surfaces to be treated or cleaned are suitable for polishing. This warranty does not affect your statutory rights. This warranty excludes the use for rental. In the event of a fault occurring please contact our helpline before returning the unit to our Service Department at the address below together with a copy of your purchase receipt. All repairs will be dealt with speedily.

Some States do not allow limitations on how long an implied warranty lasts and some States do not allow the exclusion or limitation of incidental or consequential damages, so part or all of the above limitations or exclusions may not apply to you.

This warranty gives you specific legal rights, and you may also have other rights which vary from State to State.

Toll Free: 888-783-2612 Email: [enquiries@ewbankusa.com](mailto:enquiries@ewbankusa.com)

**[www.ewbankusa.com](http://www.ewbankusa.com)**

Made in China



Earlex Inc  
8261 Highway 73, Suite F,  
Stanley, N.C. 28164, USA

**Toll Free:** 888-783-2612 **Email:** [enquiries@ewbankusa.com](mailto:enquiries@ewbankusa.com) **Website:** [www.ewbankusa.com](http://www.ewbankusa.com)

2013 © Ewbank Products Ltd  
EB0495 14/06/2013