

## Description

The Halo RL560 is a complete LED Baffle-Trim Module for 5" and 6" aperture recessed downlights; suitable for new construction, remodel and retrofit installation. The RL560 is cULus Listed for use with Halo and All-Pro, and is UL Classified for use with other compatible 5" and 6" housings. The RL560 with integral LED driver offers 120 volt dimming capability. The RL560 lens provides uniform illumination and wet location listing. Precision construction makes any housing AIR-TITE for added HVAC savings and code compliance.

## Specification Features

### MECHANICAL

#### Module - Trim

- Module construction includes LED, heat sink, reflector, lens, baffle and trim ring
- Regressed baffle
- Heat sink designed to conduct heat away from the LED keeping the junction temperatures below specified maximums, even when installed in insulated ceiling environments
- Designer trim finish options (sold separately)
  - White (Paintable) Trim Ring
  - Satin Nickel Trim Ring
  - Tuscan Bronze Trim Ring

#### Lens

- Regressed lens
- Impact-resistant polycarbonate
- Convex form for lamp-like appearance
- High lumen transmission
- Diffusing for even illumination

#### Mounting

- Push-N-Twist universal installation clips
- Pre-installed clips designed to fit industry standard 5" and 6" recessed housings

#### Housing Compatibility

See Housing Compatibility

#### LED

- Color Temperature (CCT)\* Options: 2700K, 3000K, 3500K, and 4000K
- CRI options: 80 and 90†
  - 90 CRI can be used for California Title 24 compliance/certified to Title 20
  - 80 CRI can be used to comply with California Title 24 Non-Residential Lighting Controls requirements as an LED luminaire

#### LED Chromaticity

- A tight chromaticity specification ensures LED color uniformity, sustainable Color Rendering Index (CRI) and Correlated Color Temperature (CCT) over the useful life of the LED
- LED chromaticity of 3 SDCM

exceeds ENERGY STAR® color standards per ANSI C78.377-2008

- 90 CRI model features high color performance with R9 greater than 50
- Every Halo LED is quality tested, measured, and serialized in a permanent record to register lumens, wattage, CRI and CCT
- Halo LED serialized testing and measurement ensures color and lumen consistency on a per-unit basis, and validates long-term product consistency over time

### ELECTRICAL

#### Power Connections

- LED connector is a non-screw base luminaire disconnect offering easy installation with the matching Halo 5" and 6" LED housings
- LED Connector meets California Title-24 high efficacy luminaire requirement for a non-screw base socket, and where required to qualify as a high efficacy luminaire
- The included E26 medium screw-base Edison adapter provides easy retrofit of incandescent housings (see Housing Compatibility)

#### Ground Connection

Separate grounding cable included on the module for attachment to the housing during installation.

#### LED Driver

- Dimmable driver is a 120 Volt, high efficiency, electronic power supply providing DC power to the LED
- Driver meets FCC EMI/RFI Consumer Level limits for use in residential and commercial installations
- Driver features high power factor, low THD, and has integral thermal protection in the event of over temperature or internal failure

#### Dimming

- Designed for continuous dimming capability to nominally 5% with many 120V Leading Edge (LE) and Trailing Edge (TE) Phase Control dimmers. (Dimmers with low end trim adjustment offer greater assurance of achieving 5% level.)

| Catalog #   | Type |
|-------------|------|
| Project     |      |
| Comments    | Date |
| Prepared by |      |

- Consult dimmer manufacturer for compatibility and conditions of use

**Note:** some dimmers require a neutral in the wallbox.

#### Warranty

Cooper Lighting provides a five year limited warranty on RL56 LED.

#### Compliance Labels

- UL/cUL Listed 1598 Luminaire (with listed housings)
- UL Classified (with other housings - see Housing Compatibility)
- UL/cUL Listed for Damp Location
- UL/cUL Listed for Wet Location - Shower Applications
- IP56 Ingress Protection rated
- May be installed in housings in direct contact with insulation\*\* and combustible material

#### Compliance

- Airtight certified per ASTM E283 (not exceeding 2.0 CFM under 57 Pascals pressure difference)
- 90 CRI: Can be used to comply with California Title 24 High Efficacy requirements. Certified to California Title 20 Appliance Efficiency Database.\*
- 80 CRI: Can be used to comply with California Title 24 Non-Residential Lighting Controls requirements as an LED luminaire
- Can be used for International Energy Conservation Code (IECC) high efficiency luminaire compliance
- Can be used for Washington State Energy Code compliance
- ENERGY STAR® Certified luminaire - consult ENERGY STAR® Certified Product List\*
- EMI/RFI per FCC 47CFR Part 15 Class B Consumer limits, suitable for use in residential and commercial installations
- Contains no mercury or lead and RoHS compliant
- Photometric testing in accordance with IES LM-79
- Lumen maintenance projections in accordance with IES LM-80 and TM-21



RL560WH9†

White

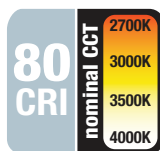
## 900 Series 5/6-Inch LED Recessed Retrofit Module-Trim

**80CRI**  
**2700K, 3000K,**  
**3500K, 4000K**

**90CRI**  
**2700K, 3000K,**  
**3500K, 4000K**

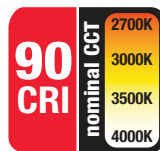
**FOR USE IN  
INSULATED CEILING  
AND NON- INSULATED  
CEILING RATED  
HOUSINGS**

**HIGH EFFICACY LED  
WITH INTEGRAL  
DRIVER - DIMMABLE**



Refer to ENERGY STAR® Certified Products List.

Can be used to comply with California Title 24 Non-Residential Lighting Controls requirements as a LED Luminaire.



Refer to ENERGY STAR® Certified Products List.

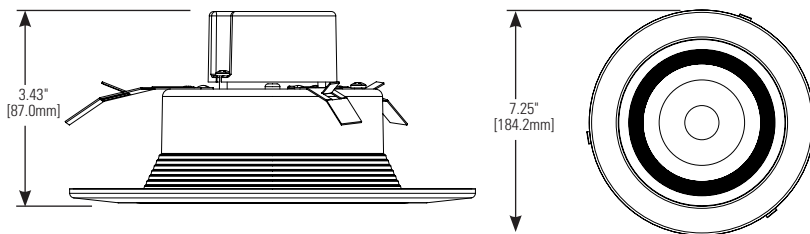
Can be used to comply with California Title 24 High Efficacy requirements. Certified to California Title 20 Appliance Efficiency Database.

\* Refer to ENERGY STAR® Certified Products List and CEC (T20) Appliance Database for listings.

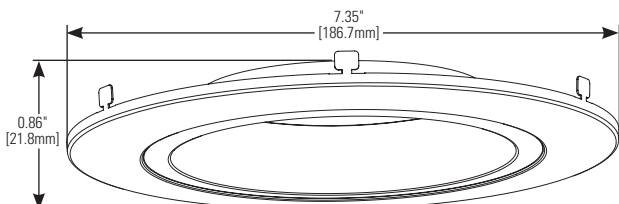
\*\* Not for use with housings in direct contact with spray foam insulation.

† See ordering information table for available models.

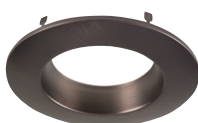
## RL56 Dimensions



## Designer Trim Dimensions



**RL56TRMWH**  
White (Paintable)



**RL56TRMTBZ**  
Tuscan Bronze



**RL56TRMSN**  
Satin Nickel

## Performance Data

| Catalog #   | CRI | Lumens | LPW | Watts | CCT   |
|-------------|-----|--------|-----|-------|-------|
| RL560WH9827 | 80  | 1000   | 74  | 13.5  | 2700K |
| RL560WH9830 | 80  | 1030   | 76  | 13.5  | 3000K |
| RL560WH9835 | 80  | 1080   | 80  | 13.5  | 3500K |
| RL560WH9840 | 80  | 1100   | 81  | 13.5  | 4000K |
| RL560WH9927 | 90  | 850    | 63  | 13.5  | 2700K |
| RL560WH9930 | 90  | 885    | 66  | 13.5  | 3000K |
| RL560WH9935 | 90  | 910    | 67  | 13.5  | 3500K |
| RL560WH9940 | 90  | 930    | 69  | 13.5  | 4000K |

## Energy Data

**RL56 Series** (Values at non-dimming line voltage)

Minimum Starting Temp: -30°C (-22°F)

EMI/RFI: FCC Title 47 CFR, Part 15, Class B (Consumer)

Sound Rating: Class A

Input Voltage: 120V

Power Factor: >0.90

Input Frequency: 60Hz

THD: <20%

Input Power: 13.5W

Input Current: 0.15A

Maximum IC (Insulated Ceiling) Ambient Continuous Operating Temperature: 25°C (77°F)

Maximum Non-IC Ambient Continuous Operating Temperature 40°C (104°F)



E26 Screw base adapter for retrofit (included)

## Ordering Information

Sample Number: **RL560WH9827-RL56TRMSN**

Complete unit includes a RL56 Baffle-Trim LED Module and a 5" and 6" compatible housing (ordered separately). Optional accessory designer trim ring ordered separately.

### RL56 900 Series

#### 80 CRI

**RL560WH9827**=5"/6" Retrofit Baffle - Trim LED Module, 80CRI, 2700K, Matte White

**RL560WH9830**=5"/6" Retrofit Baffle - Trim LED Module, 80CRI, 3000K, Matte White

**RL560WH9835**=5"/6" Retrofit Baffle - Trim LED Module, 80CRI, 3500K, Matte White

**RL560WH9840**=5"/6" Retrofit Baffle - Trim LED Module, 80CRI, 4000K, Matte White

#### 90 CRI

**RL560WH9927**=5"/6" Retrofit Baffle - Trim LED Module, 90CRI, 2700K, Matte White

**RL560WH9930**=5"/6" Retrofit Baffle - Trim LED Module, 90CRI, 3000K, Matte White

**RL560WH9935**=5"/6" Retrofit Baffle - Trim LED Module, 90CRI, 3500K, Matte White

**RL560WH9940**=5"/6" Retrofit Baffle - Trim LED Module, 90CRI, 4000K, Matte White

### Accessory (Order Separately)

**RL56TRMSN**=5/6" Satin Nickel Trim Ring

**RL56TRMTBZ**=5/6" Tuscan Bronze Trim Ring

**RL56TRMWH**=5/6" White Paintable Trim Ring

**OT400P**=Oversize Flat White Metal Trim Ring 6" I.D. x 9-1/4" O.D. (ring slips behind RL560 ring, in stepped configuration)

**OT403P**=Oversize White Plastic Trim Ring 6" I.D. x 8" O.D. (ring slips behind RL560 ring, in stepped configuration)

**TRM690WH**=Oversize Matte White Metal Trim Ring. Designed for RL560 ring to inset into oversize ring for an even (non-stepped) trim surface

**HE26LED**=Replacement screw base adapter (one included with unit)

## Housing Compatibility

**RL56 Series LED Retrofit is UL Classified for retrofit in the follow 5/6" recessed housings:**

The RL Series LED light module - trim combination is cULus Listed or UL Classified for use with any 5"/6" diameter recessed housing constructed of steel or aluminum with an internal volume that exceeds 107.9 in³ in addition to those noted above.

## HOUSINGS - Halo and All-Pro UL Listed Compatibility

### Compatible Halo LED Housings with LED luminaire connector (high efficacy compliant - Title 24, IECC, WSEC)

| Recessed Can Size | Catalog Number | Description  |
|-------------------|----------------|--|
| 5"                | H550ICAT       | 5" LED, Insulated Ceiling, AIR-TITE, New Construction Housing          |
|                   | H550RICAT      | 5" LED, Insulated Ceiling, AIR-TITE, Remodel Housing                   |
| 6"                | H750ICAT       | 6" LED, Insulated Ceiling, AIR-TITE, New Construction Housing          |
|                   | H750RICAT      | 6" LED, Insulated Ceiling, AIR-TITE, Remodel Housing                   |
|                   | H750T          | 6" LED, Non-IC, AIR-TITE, New Construction Housing                     |
|                   | H750RINTD010   | 6" LED, Non-IC, AIR-TITE, Remodel International Housing                |
|                   | H750TCP        | 6" LED, Non-IC, New Construction/Remodel Chicago Plenum Housing        |
|                   | H2750ICAT      | 6" LED, Shallow, Insulated Ceiling, AIR-TITE, New Construction Housing |

### Compatible Halo Incandescent E26 Screwbase Housings

|    |           |  |
|----|-----------|--|
| 5" | H5ICAT    | 5" Insulated Ceiling, AIR-TITE New Construction Housing                    |
|    | H5RICAT   | 5" Insulated Ceiling, AIR-TITE Remodel Housing                             |
|    | H5T       | 5" Non-IC, New Construction Housing  |
|    | H5RT      | 5" Non-IC, Remodel Housing   |
|    | H5TM      | 5" Non-IC, New Construction Housing (metric version - Canada)              |
|    | H25ICAT   | 5" Shallow, Insulated Ceiling, AIR-TITE New Construction                   |
| 6" | H7ICAT    | 6" Insulated Ceiling, AIR-TITE New Construction Housing                    |
|    | H7RICAT   | 6" Insulated Ceiling, AIR-TITE Remodel Housing                             |
|    | H7ICT     | 6" Insulated Ceiling, New Construction Housing                             |
|    | H7RICT    | 6" Insulated Ceiling, Remodel Housing                                      |
|    | H7ICATNB  | 6" Insulated Ceiling, AIR-TITE New Construction Housing, No Socket Bracket |
|    | H7ICTNB   | 6" Insulated Ceiling, New Construction Housing, No Socket Bracket          |
|    | H7T       | 6" Non-IC, New Construction Housing  |
|    | H7RT      | 6" Non-IC, Remodel Housing   |
|    | H7TNB     | 6" Non-IC, New Construction Housing, No Socket Bracket                     |
|    | H7TCP     | 6" Non-IC, Chicago Plenum, New Construction/Remodel Housing                |
|    | H7UICT    | 6" Insulated Ceiling, Universal New Construction Housing                   |
|    | H7UICAT   | 6" Insulated Ceiling, Universal, AIR-TITE, New Construction Housing        |
|    | H27ICAT   | 6" Shallow, Insulated Ceiling, AIR-TITE New Construction Housing           |
|    | H27RICAT  | 6" Shallow, Insulated Ceiling, AIR-TITE Remodel Housing                    |
|    | H27ICT    | 6" Shallow, Insulated Ceiling, New Construction Housing                    |
|    | H27RICT   | 6" Shallow, Insulated Ceiling, Remodel Housing                             |
|    | H27T      | 6" Shallow, Non-IC, New Construction Housing                               |
|    | H27RT     | 6" Shallow, Non-IC, Remodel Housing  |
|    | ML7BXRFK  | 6" Retrofit Enclosure, Non-IC, BX Whip                                     |
|    | ML7E26RFK | 6" Retrofit Enclosure, Non-IC, E26 Screw base Interface                    |

### All-Pro Compatible Incandescent E26 Screwbase Housings

|    |           |  |
|----|-----------|--|
| 5" | EI500AT   | 5" Insulated Ceiling, AIR-TITE New Construction Housing                    |
|    | EI500RAT  | 5" Insulated Ceiling, AIR-TITE Remodel Housing                             |
|    | ET500     | 5" Non-IC, New Construction Housing  |
|    | ET500R    | 5" Non-IC, Remodel Housing   |
| 6" | EI700AT   | 6" Insulated Ceiling, AIR-TITE New Construction Housing                    |
|    | EI700RAT  | 6" Insulated Ceiling, AIR-TITE Remodel Housing                             |
|    | EI700     | 6" Insulated Ceiling, New Construction Housing                             |
|    | EI700R    | 6" Insulated Ceiling, Remodel Housing                                      |
|    | EI700ATNB | 6" Insulated Ceiling, AIR-TITE New Construction Housing, No Socket Bracket |
|    | EI700NB   | 6" Insulated Ceiling, New Construction Housing, No Socket Bracket          |
|    | EI700U    | 6" Insulated Ceiling, Universal New Construction Housing                   |
|    | EI700UAT  | 6" Insulated Ceiling, Universal, AIR-TITE, New Construction Housing        |
|    | ET700     | 6" Non-IC, New Construction Housing  |
|    | ET700R    | 6" Non-IC, Remodel Housing   |
|    | EI2700AT  | 6" Shallow, Insulated Ceiling, AIR-TITE New Construction Housing           |
|    | EI2700    | 6" Shallow, Insulated Ceiling, New Construction Housing                    |
|    | EI2700R   | 6" Shallow, Insulated Ceiling, AIR-TITE Remodel Housing                    |
|    | ET2700    | 6" Shallow, Non-IC, New Construction Housing                               |
|    | ET2700R   | 6" Shallow, Non-IC, Remodel Housing  |

LIGHTING FACTS

|   |   |   |  |
|---|---|---|--|
| <div> <div> <div>LED</div> <div>lighting facts®</div> <div>A Program of the U.S. DOE</div> </div> <div> <div>Light Output (Lumens)</div> <div>Watts</div> <div>Lumens per Watt (Efficacy)</div> </div> <div> <div>1000</div> <div>13.5</div> <div>74</div> </div> </div> <div> <div>Color Accuracy</div> <div>Color Rendering Index (CRI)</div> <div>80</div> </div> <div> <div>Light Color</div> <div>Correlated Color Temperature (CCT)</div> <div>2700 (Warm White)</div> <div> <div>2700K</div> <div>3000K</div> <div>4500K</div> <div>6500K</div> </div> <div> <div>Warm White</div> <div>Bright White</div> <div>Daylight</div> </div> </div> <div> <div>All results are according to IESNA LM-79-2008: Approved Method for the Electrical and Photometric Testing of Solid-State Lighting. The U.S. Department of Energy (DOE) verifies product test data and results.</div> <div>Visit <a href="http://www.lightingfacts.com">www.lightingfacts.com</a> for the Label Reference Guide.</div> <div> <div>Registration Number: F4QJ-07MET (9/26/2014)</div> <div>Model Number: RL560WH9827</div> <div>Type: Luminaire - Downlight</div> </div> </div> | <div> <div> <div>LED</div> <div>lighting facts®</div> <div>A Program of the U.S. DOE</div> </div> <div> <div>Light Output (Lumens)</div> <div>Watts</div> <div>Lumens per Watt (Efficacy)</div> </div> <div> <div>1030</div> <div>13.5</div> <div>76</div> </div> </div> <div> <div>Color Accuracy</div> <div>Color Rendering Index (CRI)</div> <div>81</div> </div> <div> <div>Light Color</div> <div>Correlated Color Temperature (CCT)</div> <div>3000 (Bright White)</div> <div> <div>2700K</div> <div>3000K</div> <div>4500K</div> <div>6500K</div> </div> <div> <div>Warm White</div> <div>Bright White</div> <div>Daylight</div> </div> </div> <div> <div>All results are according to IESNA LM-79-2008: Approved Method for the Electrical and Photometric Testing of Solid-State Lighting. The U.S. Department of Energy (DOE) verifies product test data and results.</div> <div>Visit <a href="http://www.lightingfacts.com">www.lightingfacts.com</a> for the Label Reference Guide.</div> <div> <div>Registration Number: F4QJ-84SPV (9/26/2014)</div> <div>Model Number: RL560WH9830</div> <div>Type: Luminaire - Downlight</div> </div> </div> | <div> <div> <div>LED</div> <div>lighting facts®</div> <div>A Program of the U.S. DOE</div> </div> <div> <div>Light Output (Lumens)</div> <div>Watts</div> <div>Lumens per Watt (Efficacy)</div> </div> <div> <div>1080</div> <div>13.5</div> <div>80</div> </div> </div> <div> <div>Color Accuracy</div> <div>Color Rendering Index (CRI)</div> <div>81</div> </div> <div> <div>Light Color</div> <div>Correlated Color Temperature (CCT)</div> <div>3500 (Bright White)</div> <div> <div>2700K</div> <div>3000K</div> <div>4500K</div> <div>6500K</div> </div> <div> <div>Warm White</div> <div>Bright White</div> <div>Daylight</div> </div> </div> <div> <div>All results are according to IESNA LM-79-2008: Approved Method for the Electrical and Photometric Testing of Solid-State Lighting. The U.S. Department of Energy (DOE) verifies product test data and results.</div> <div>Visit <a href="http://www.lightingfacts.com">www.lightingfacts.com</a> for the Label Reference Guide.</div> <div> <div>Registration Number: F4QJ-04JTK (9/26/2014)</div> <div>Model Number: RL560WH9835</div> <div>Type: Luminaire - Downlight</div> </div> </div> | <div> <div> <div>LED</div> <div>lighting facts®</div> <div>A Program of the U.S. DOE</div> </div> <div> <div>Light Output (Lumens)</div> <div>Watts</div> <div>Lumens per Watt (Efficacy)</div> </div> <div> <div>1100</div> <div>13.5</div> <div>81</div> </div> </div> <div> <div>Color Accuracy</div> <div>Color Rendering Index (CRI)</div> <div>81</div> </div> <div> <div>Light Color</div> <div>Correlated Color Temperature (CCT)</div> <div>4000 (Bright White)</div> <div> <div>2700K</div> <div>3000K</div> <div>4500K</div> <div>6500K</div> </div> <div> <div>Warm White</div> <div>Bright White</div> <div>Daylight</div> </div> </div> <div> <div>All results are according to IESNA LM-79-2008: Approved Method for the Electrical and Photometric Testing of Solid-State Lighting. The U.S. Department of Energy (DOE) verifies product test data and results.</div> <div>Visit <a href="http://www.lightingfacts.com">www.lightingfacts.com</a> for the Label Reference Guide.</div> <div> <div>Registration Number: F4QJ-AUHOPU (9/26/2014)</div> <div>Model Number: RL560WH9840</div> <div>Type: Luminaire - Downlight</div> </div> </div> |
| <div> <div> <div>LED</div> <div>lighting facts®</div> <div>A Program of the U.S. DOE</div> </div> <div> <div>Light Output (Lumens)</div> <div>Watts</div> <div>Lumens per Watt (Efficacy)</div> </div> <div> <div>850</div> <div>13.5</div> <div>62</div> </div> </div> <div> <div>Color Accuracy</div> <div>Color Rendering Index (CRI)</div> <div>91</div> </div> <div> <div>Light Color</div> <div>Correlated Color Temperature (CCT)</div> <div>2700 (Warm White)</div> <div> <div>2700K</div> <div>3000K</div> <div>4500K</div> <div>6500K</div> </div> <div> <div>Warm White</div> <div>Bright White</div> <div>Daylight</div> </div> </div> <div> <div>All results are according to IESNA LM-79-2008: Approved Method for the Electrical and Photometric Testing of Solid-State Lighting. The U.S. Department of Energy (DOE) verifies product test data and results.</div> <div>Visit <a href="http://www.lightingfacts.com">www.lightingfacts.com</a> for the Label Reference Guide.</div> <div> <div>Registration Number: F4QJ-HANLJZ (9/26/2014)</div> <div>Model Number: RL560WH9927</div> <div>Type: Luminaire - Downlight</div> </div> </div> | <div> <div> <div>LED</div> <div>lighting facts®</div> <div>A Program of the U.S. DOE</div> </div> <div> <div>Light Output (Lumens)</div> <div>Watts</div> <div>Lumens per Watt (Efficacy)</div> </div> <div> <div>885</div> <div>13.5</div> <div>65</div> </div> </div> <div> <div>Color Accuracy</div> <div>Color Rendering Index (CRI)</div> <div>92</div> </div> <div> <div>Light Color</div> <div>Correlated Color Temperature (CCT)</div> <div>3000 (Bright White)</div> <div> <div>2700K</div> <div>3000K</div> <div>4500K</div> <div>6500K</div> </div> <div> <div>Warm White</div> <div>Bright White</div> <div>Daylight</div> </div> </div> <div> <div>All results are according to IESNA LM-79-2008: Approved Method for the Electrical and Photometric Testing of Solid-State Lighting. The U.S. Department of Energy (DOE) verifies product test data and results.</div> <div>Visit <a href="http://www.lightingfacts.com">www.lightingfacts.com</a> for the Label Reference Guide.</div> <div> <div>Registration Number: F4QJ-S643YH (9/26/2014)</div> <div>Model Number: RL560WH9930</div> <div>Type: Luminaire - Downlight</div> </div> </div> | <div> <div> <div>LED</div> <div>lighting facts®</div> <div>A Program of the U.S. DOE</div> </div> <div> <div>Light Output (Lumens)</div> <div>Watts</div> <div>Lumens per Watt (Efficacy)</div> </div> <div> <div>910</div> <div>13.5</div> <div>67</div> </div> </div> <div> <div>Color Accuracy</div> <div>Color Rendering Index (CRI)</div> <div>92</div> </div> <div> <div>Light Color</div> <div>Correlated Color Temperature (CCT)</div> <div>3500 (Bright White)</div> <div> <div>2700K</div> <div>3000K</div> <div>4500K</div> <div>6500K</div> </div> <div> <div>Warm White</div> <div>Bright White</div> <div>Daylight</div> </div> </div> <div> <div>All results are according to IESNA LM-79-2008: Approved Method for the Electrical and Photometric Testing of Solid-State Lighting. The U.S. Department of Energy (DOE) verifies product test data and results.</div> <div>Visit <a href="http://www.lightingfacts.com">www.lightingfacts.com</a> for the Label Reference Guide.</div> <div> <div>Registration Number: F4QJ-800H8W (9/26/2014)</div> <div>Model Number: RL560WH9935</div> <div>Type: Luminaire - Downlight</div> </div> </div> | <div> <div> <div>LED</div> <div>lighting facts®</div> <div>A Program of the U.S. DOE</div> </div> <div> <div>Light Output (Lumens)</div> <div>Watts</div> <div>Lumens per Watt (Efficacy)</div> </div> <div> <div>930</div> <div>13.5</div> <div>68</div> </div> </div> <div> <div>Color Accuracy</div> <div>Color Rendering Index (CRI)</div> <div>92</div> </div> <div> <div>Light Color</div> <div>Correlated Color Temperature (CCT)</div> <div>4000 (Bright White)</div> <div> <div>2700K</div> <div>3000K</div> <div>4500K</div> <div>6500K</div> </div> <div> <div>Warm White</div> <div>Bright White</div> <div>Daylight</div> </div> </div> <div> <div>All results are according to IESNA LM-79-2008: Approved Method for the Electrical and Photometric Testing of Solid-State Lighting. The U.S. Department of Energy (DOE) verifies product test data and results.</div> <div>Visit <a href="http://www.lightingfacts.com">www.lightingfacts.com</a> for the Label Reference Guide.</div> <div> <div>Registration Number: F4QJ-RULJXZ (9/26/2014)</div> <div>Model Number: RL560WH9940</div> <div>Type: Luminaire - Downlight</div> </div> </div>  |