



OPERATOR'S MANUAL

9 ft. Electric Pole Saw

Model # 4018



! IMPORTANT:

**Read this instruction manual carefully
before putting the chainsaw into operation
and strictly observe the safety regulations!**

Keep this instruction manual for future reference!



Questions? Problems?

DO NOT RETURN TO STORE

**Store personnel where the winch was purchased
are not trained to handle technical questions.**

**In order to answer questions in the most efficient and
speedy manner, contact Customer Service at:
(888) 315-3080 M-F 8-5 CST or
by email: partsandservice@greatlakestec.com**

TABLE OF CONTENTS

Package Contents	2	Operation	10
Specifications	3	Pole Saw Trimming Precautions	10
Important Safety Information	4	Maintenance	11
Before Operating Saw	4	Guide Bar and oil Holes	11
While Operating Saw	5	Sprocket	11
Kickback Safety Precaution	6	Saw Chain Sharpening.	11
Extension Cords	7	Carbon Brushes	11
Chainsaw Components	7	Maintenance Chart.	12
Assembly	8	Exploded View	13
Installing Guide Bar & Saw Chain	8	Parts List.	14
Installing Support Handle	8	Warranty	15
Chain Lubricating Oil	9		
Chain Tension Adjustment	9		
Chain Lubrication Verification.	9		

The WEN product you purchased has been factory pre-assembled for your convenience. Due to packaging restrictions, guide bar and saw chain installation will be necessary. After opening the carton, check for damage or missing parts. Use the content list below to check for missing parts.

PACKAGE CONTENTS

- 1 Power Head**
- 1 Guide Bar**
- 1 Saw Chain**
- 1 Oil Container**
- 1 Strap**
- 1 Scabbard**
- 2 Brushes**
- 1 Owner's Manual**
- 1 Wrench**

CHAINSAW SPECIFICATIONS

SPECIFICATIONS	
Model	4018
Motor	120V, 60Hz, 5.2 A
Saw Chain	Oregon 91VG, 3/8" Pitch
Bar Length	8"
Chain Speed at No Load	10.8m/s
Lubrication of Chain	Automatic Lubrication
Chain Oil Required	Yes
Oil Tank Capacity	70 cc (2.5 fluid ounces)
Weight	10 LB

IMPORTANT SAFETY INFORMATION



Warning – When using an electric pole saw, basic safety precautions should always be followed to reduce the risk of fire, electric shock, and injury to persons, including the following:

READ ALL INSTRUCTIONS.

Make sure you read and understand all instructions Important Safety Information on pages 2 through 4. Improper use of this pole saw can cause severe injury or death from fire, electrical shock, and body contact with moving chain, on falling wood.

BEFORE OPERATING SAW

1. Read and understand this owner's manual before operating pole saw.
2. Watch what you are doing .Use common sense .Do not operate saw when you are tired.
3. Use pole saw for cutting wood only .Do not use pole saw for purpose not intended. Do not use for cutting plastic, masonry, etc.
4. Only well-instructed adults should operate pole saw. Never allow children to operate pole saw.
5. Use only electrical voltage noted on model plate of pole saw.
6. Use only extension cords marked for outdoor use.
7. Do not operate pole saw
 - While under the influence of alcohol, medication, or drugs
 - In rain or in damp or wet areas
 - Where highly flammable liquids or gases are present
 - If saw is damaged, adjusted wrong, or not fully and securely assembled
 - If trigger does not turn saw on and off. Chain must stop moving when you release trigger. Have faulty switch replaced by authorized service center.
 - While in a hurry
 - While in tree or on a ladder unless trained to do so
8. Wear snug-fitting clothes when operating pole saw. Do not wear loose clothing or jewelry. They can get caught in moving saw chain.
9. Wear the following safety gear when operating pole saw.
 - Heavy-duty gloves(wear rubber gloves when working outdoors)
 - Steel-toed safety footwear with non-skid soles
 - Eye protection such as safety glasses, goggles, or face screen
 - Safe hard hat
 - Ear mufflers or ear plugs
 - Hair covering to contain long hair
 - Face or dust mask (if working in dusty areas)

10. Before cutting, always provide the following:
 - Clear work area
 - Secure footing
 - Planned retreat path from falling tree
11. Inspect tree before cutting down. Make sure there are no dead limbs or branches that may fall on you.
12. To reduce the risk of electric shock, this saw has a polarized plug (one blade is wider than the other). This plug will fit in a polarized outlet only one way. If the plug does not fit fully in the outlet of your extension cord, reverse the plug. If it still does not fit, a polarized extension cord will be necessary. Do not change the plug in any way.

WHILE OPERATING SAW

1. Stay alert. Use common sense while operating pole saw.
2. Keep work area clean. Cluttered areas invite injuries.
3. Be aware of extension cord while operating pole saw. Be careful not to trip over cord. Keep cord away from chain and operator at all times.
4. Keep children, animals, and bystanders away from pole saw and extension cord. Only pole saw user should be in work area.
5. Do not cut down a tree unless you are trained or have expert help.
6. If two or more persons perform bucking and felling operations at the same time, provide plenty of distance between operations. Provide distance of at least twice the height of tree being felled.
7. Secure wood you are cutting by using clamps or chocks.
8. Grip pole saw firmly with both hands. Never operate pole saw with one hand. Never use hand guard as handle.
9. Keep finger off trigger until ready to make cut.
10. Before starting pole saw, make sure chain is not touching anything.
11. To guard against electrical shock, avoid body contact with grounded objects such as pipes, fences, and metal posts.
12. Keep all parts of body away from chain when saw is running.
13. Do not force pole saw while cutting. Apply light pressure. It will do the job better and safer at the rate for which it was intended.
14. Cut small brush and saplings with extreme care. Slender material may catch in chain and be whipped toward you. This could also pull you off balance.
15. When cutting limb or tree trunk that is under tension, use extreme caution. Be alert for wood springing back. When wood tension is released, limb could spring back and strike operator causing severe injury or death.

16. Carry pole saw from one place to another

- With saw stopped and unplugged
- By holding front handle (never use hand guard as handle)
- With finger off trigger
- With guide bar and chain to rear

KICKBACK SAFETY PRECAUTIONS



Warning – Kickback may occur when the nose or tip of the guide bar touches on object, or when the wood closes in the cut. Tip contact in some cases may cause a lightning fast reverse reaction, kicking the guide bar up and back towards the operation. Pinching the saw chain along the top of the guide bar may push the guide bar rapidly back towards the operator. Either of these reactions may cause you to lose control of the saw which could result in serious injury to user.

Kickback is the name given to a sudden, rapid upward movement of the saw cutting mechanism in an upward arc towards the operator. Kickback occurs when the upper quadrant of the bar nose comes in contact with a solid object or is pinched. The rotational force of the chainsaw can be reversed in the opposite direction of the chain movement. This may fling the bar up and back in an arc towards the operator. Serious injury or even death can result from contact between the moving saw chain and the operator.

The best protection against injury due to kickback is to avoid situations that can cause kickback:

- Hold the chainsaw firmly with both hands and maintain a secure grip.
- Be aware of the location of the bar nose at all times while cutting.
- Never bring the nose of the guide bar in contact with any object. Never cut limbs with the nose of the guide bar. Be especially careful when cutting saplings, brush and small hard limbs that may easily pinch the cutting chain.
- Don't cut above shoulder height. Don't overreach or use the chainsaw while standing on a ladder or tree.
- Never use the chainsaw one-handed.
- Use extreme caution when entering a previous cut.
- Do not attempt plunge cuts if you are not familiar with this cutting technique.
- Stand to the side of the cutting path of the chainsaw.
- Cut with a correctly sharpened, properly tensioned chain at all times.

Save these instructions. It is your guide to safe and proper operation of this pole saw.

EXTENSION CORDS

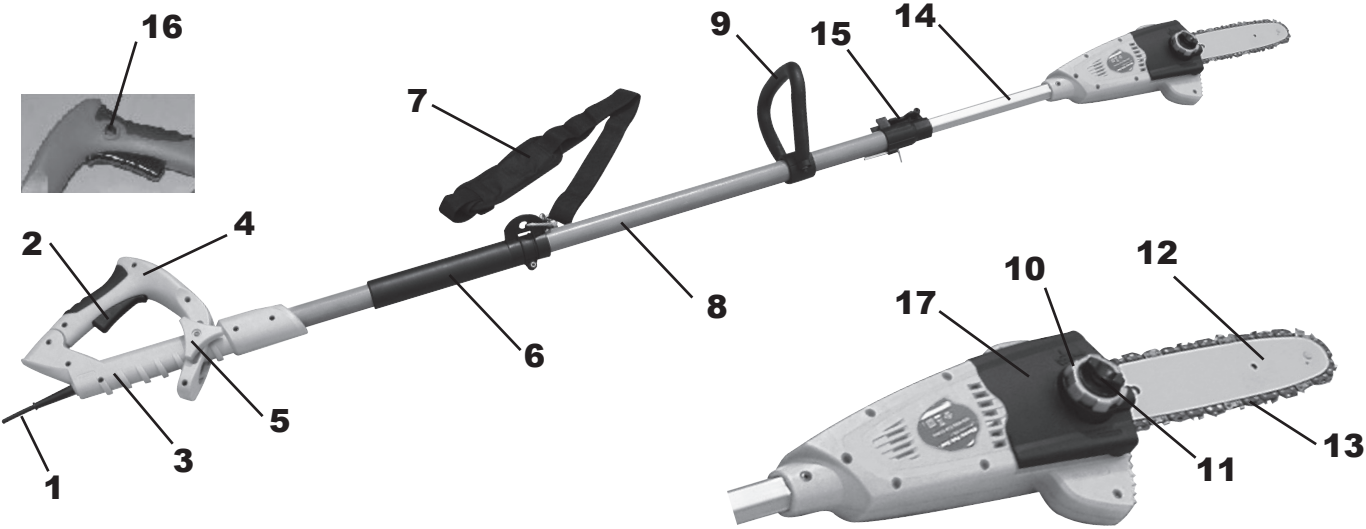
If you use an extension cord, be sure to use one heavy enough to carry the current your electric saw will draw. An improper gauged extension cord will cause a drop in wire voltage resulting in loss of power and overheating. Use only extension cords having an electric rating not less than the rating of the product.

The following table shows the correct size to use depending on cord length and machine ampere rating.

AMERICAN WIRE GAUGE RATING CHART

EXTENSION CORD LENGTH (FEET)	25	50	75	100	125	150	175	200
AMPS	AWG							
0 TO 10.0	18	18	16	16	14	14	12	12
10.1 TO 13.0	16	16	14	14	14	12	12	12
13.1 TO 15	14	12	12	12	12	12	12	--
15 TO 18	14	12	12	12	12	12	--	--

CHAINSAW COMPONENTS



1. POWER CORD
2. TRIGGER SWITCH
3. HANDLE
4. ADJUSTABLE HANDLE
5. HANDLE LOCKING KNOB
6. GRIP
7. STRAP
8. TUBE 1
9. SUPPORT HANDLE
10. TENSION ADJUSTING WHEEL
11. SPROCKET LOCKING KNOB
12. GUIDE BAR
13. SAW CHAIN
14. TUBE 2
15. LOCKING LEVER
16. TRIGGER SWITCH LOCK-OUT
17. SPROCKET COVER

ASSEMBLY

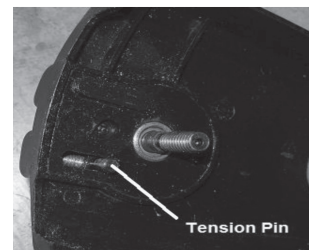
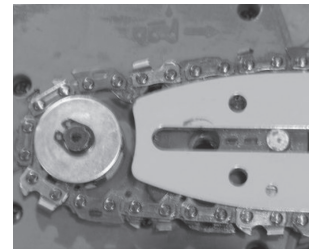


**WARNING - Check the chain tension before each use.
Always use protective gloves.**

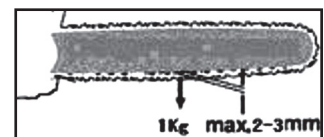
INSTALLING GUIDE BAR AND SAW CHAIN

IMPORTANT: Always loosen sprocket cover locking knob before turning the tension adjusting wheel or else the sprocket cover and tension adjuster will be damaged.

1. Remove the sprocket cover by turning the locking knob counter clockwise
2. Align the horizontal notch on the middle of the guide bar onto the raised notch on the sawhead.
3. Install chain over sprocket and around the guide bar. Make sure the chain cutters on the top of the guide bar face in the direction that the chain runs.
4. Turn the tension wheel counter clockwise until the tension pin is all the way to the left towards the sprocket.
5. Align sprocket locking knob and tension adjuster onto the notch and hole on the bar and install the sprocket cover by tightening the sprocket locking knob.
DO NOT OVERLY TIGHTEN
5. Adjust the chain tension by turning the tension wheel clockwise. The chain is correctly tensioned when it is still possible to raise it by 2-3 mm in the middle of the guide bar.
6. Tighten the sprocket cover by turning the locking knob clockwise.



Tension Pin



WARNING - Never try to run the chainsaw without sprocket cover securely tightened.

Caution: Proper saw chain tension is extremely important. If saw chain is too tight, the guide bar and saw chain will be quickly damaged. If the saw chain is too loose, it may get out of the guide bar groove and cause an injury.

Note: A new chain will stretch so adjust the tension after a few cuts. Watch saw chain tension carefully for the first half hour of cutting.

INSTALLING SUPPORT HANDLE

1. Use the allen wrench located on the locking lever mechanism to loosen nuts on the support handle base.

2. Attach support handle on the desired location of the pole.
3. Tighten nuts on base of the handle with the allen wrench provided.

CHAIN LUBRICATING OIL

Use high quality chain lubricating oil to minimize wear between the saw chain and guide bar while in use.

We recommend using SAE No. 30 in the summer and SAE No. 10 in the winter or when cutting resinous wood. Check the oil level prior to each use.

Oil tank capacity: 70 cc (2.5 fluid ounces)



WARNING - Never use waste or reclaimed oil. This results in damage to the oil pump, saw chain and guide bar.

CHAIN TENSION ADJUSTMENT



WARNING - Always loosen locking knob before turning tension wheel otherwise sprocket cover and tension wheel will be damaged. Do not over-tighten locking knob.

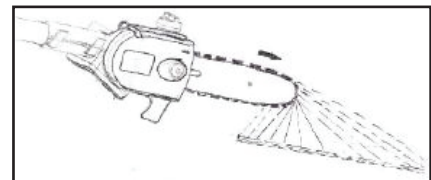
1. Loosen the locking knob.
2. Using gloved hand, hold the guide bar nose up and turn the tension wheel clockwise. The chain is correctly tensioned when it is still possible to raise it by 2-3 mm in the middle of the guide bar.
3. Tighten the sprocket cover by turning the locking knob clockwise.



WARNING - Never touch the chain while chainsaw is running. Unplug chainsaw from power source before adjusting the saw chain tension. Not doing so may cause severe personal injury or death.

CHAIN LUBRICATION VERIFICATION

To test if chain lubricating oil is adequately dispensed onto the guide bar, hold the guide bar above a dry surface and run the chainsaw for 30 seconds. A thin line of “thrown” oil should be seen on the dry surface. Never operate the saw without chain lubrication. Even running the saw without lubrication can cause irreparable harm to the entire cutting attachment.



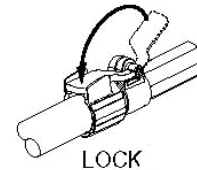
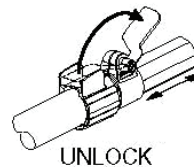
OPERATION



Warning – Always follow safety procedures. Use the chainsaw only for cutting wood and not other types of materials. Do not use the chainsaw as a lever for lifting, moving or splitting objects. Never cut in high wind, bad weather, poor visibility conditions, or in extreme temperatures. Always check for dead branches which may fall during cutting operations.

Follow these steps to operate:

1. Loosen the locking lever. Pole will slide freely.



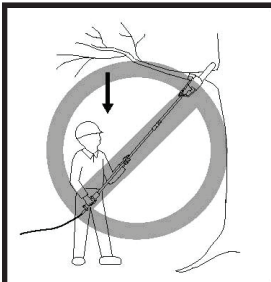
2. Adjust the Tube 1 & 2 length that can easily reach the branch, and then tighten the locking lever securely.

3. Use both hands to grip Pole Saw. Use only designated grip areas when operating Pole Saw. Use firm grip. Thumbs and fingers must wrap around Pole Saw handle and pole.

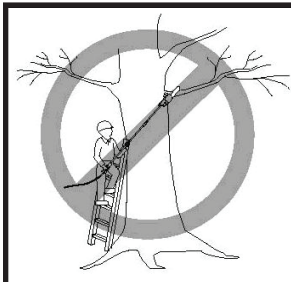
4. Make sure your footing is firm. Keep feet apart. Divide your weight evenly on both feet.

5. When ready to make a cut, press in trigger switch lock-out and squeeze trigger switch. This will turn pole saw on.

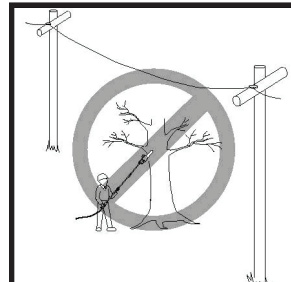
POLE SAW TRIMMING PRECAUTIONS



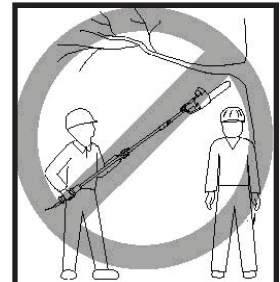
NEVER STAND DIRECTLY UNDER THE LIMB YOU ARE TRIMMING. ALWAYS POSITION YOURSELF OUT OF THE PATH OF FALLING DEBRIS.



NEVER STAND ON A LADDER OR OTHER TYPE OF UNSTABLE SUPPORT WHILE USING THE POLE SAW.



DO NOT USE POLE SAW NEAR CABLE, ELECTRIC POWER OR TELEPHONE LINES. MAINTAIN A MINIMUM CLEARANCE OF 10 FEET FROM ALL POWER LINES.

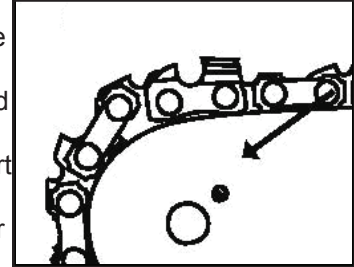


KEEP OTHER PERSONS FROM CUTTING END OF POLE SAW AND AT A SAFE DISTANCE FROM WORK AREA.

MAINTENANCE

GUIDE BAR AND OIL HOLES

Clean guide bar before use. Follow instructions for removing and installing guide bar and saw chain. Remove guide bar and clean groove of the guide bar with a small screwdriver. Clean oil holes with a wire (see right). Check the sprocket and the clutch and clean the bar mount area before installing the bar. Guide bar with sprocket nose should be lubricated with grease using a lubricating syringe. Invert the symmetrically shaped guide bar every 8 working hours or each time the chain is removed to ensure uniform wear. Check the bar rails frequently for wear and remove burs and square up the rails using a flat file. Clean the Oiler port on the saw every time the saw chain and guide bar are removed.



SPROCKET

A damaged drive sprocket will cause premature wear or damage of the chainsaw. Check the sprocket when installing a new chain. When outer diameter of sprocket is worn 0.5mm (0.020") or more, replace it. Always clean sprocket, clutch and bar mount area before installing guide bar.

SAW CHAIN SHARPENING

It is advisable to have professional shops sharpen saw chains. It is beyond the expertise of the typical home owner to sharpen saw chains. An improperly sharpened saw chain will not cut effectively, require more physical effort, and cause high vibrations and a higher rate of wear.

CARBON BRUSHES



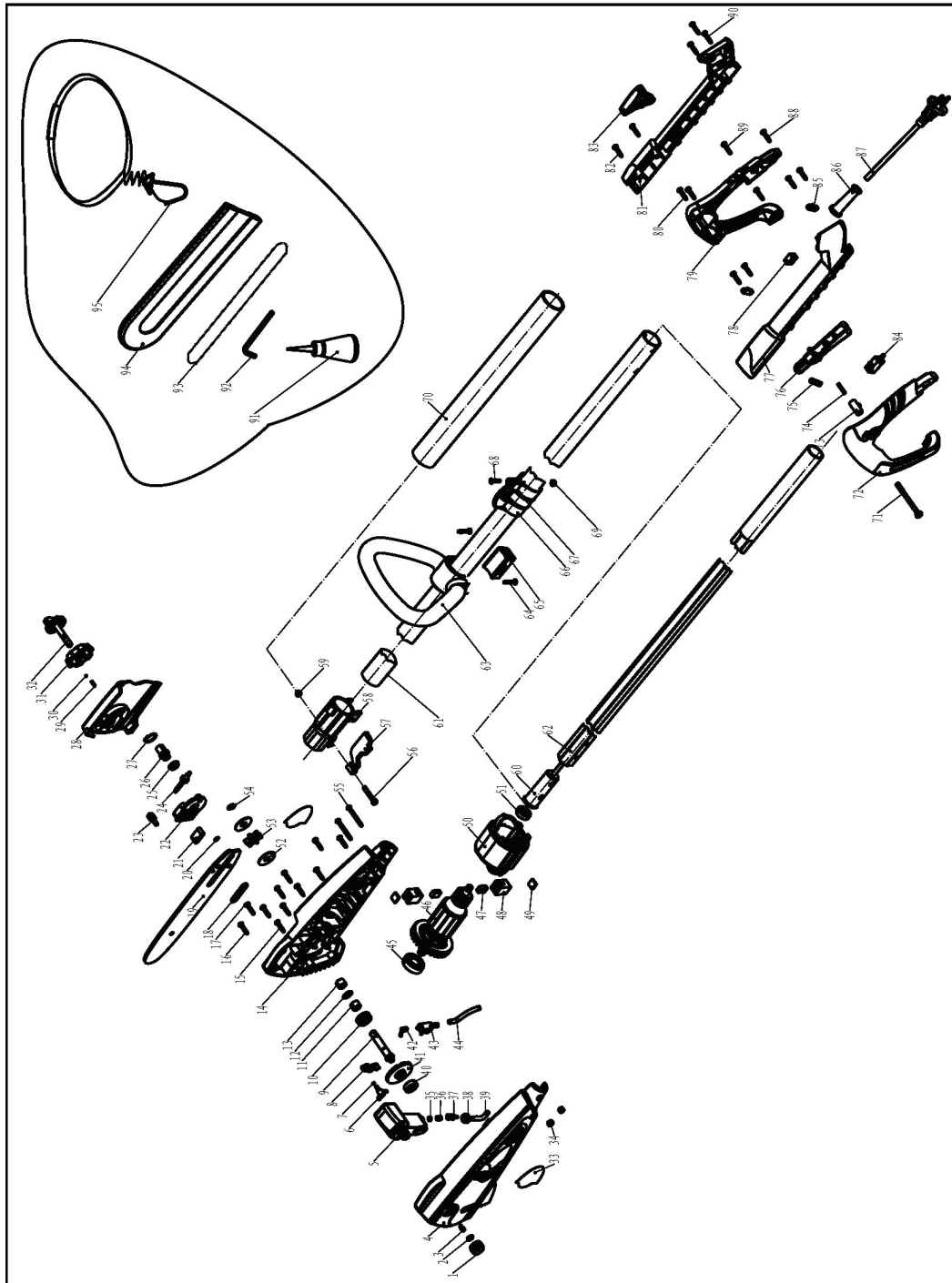
Before accessing the carbon brushes, be sure that the chainsaw is disconnected from the power source.

1. Check the condition of the carbon brushes after 50 hours of use of your new chainsaw. If the brushes are worn to 1/8 inch in length, replace them.
2. Remove the motor cover to inspect the brushes.
3. Replace them if necessary.

MAINTENANCE CHART

Please note that the following maintenance intervals apply for normal operating conditions only. If you daily working time is longer than normal or cutting conditions are different, shorten the specified intervals accordingly.		Before starting work	After finishing work or daily	Weekly	Monthly	If faulty	If damaged	As required
Complete machine	Visual inspection	x						
	Clean		x					
Switch	Check operation	x						
Oil tank	Clean				x			
Chain lubrication	Check	x						
Saw chain	Inspect, also check the sharpness	x						
	Check chain tension	x						
	Sharpen							x
Guide bar	Check (wear, damage)	x						
	Clean and turn over			x		x		
	Deburr							x
	Replace						x	x
Chain sprocket	Check			x				
All accessible screws and nuts	Retighten							x
Chain catcher on sprocket cover	Check			x				
	Replace sprocket cover						x	
Power cord	Check	x						
	Replace						x	

EXPLODED VIEW & PARTS LIST



PARTS LIST

ITEM#	DESCRIPTION	QTY
1	OIL TANK CAP	1
2	SEAL	1
3	BREATH TUBE	1
4	LEFT HOUSING	1
5	OIL TANK	1
6	OIL OUTPUT TIP	1
7	WASHER	2
8	OIL TUBE RETAIN- ING BLOCK	1
9	ARBOR	1
10	WORM GEAR	1
11	STEEL BUSHING	1
12	WASHER	1
13	NEEDLE BEARING	1
14	RIGHT HOUSING	1
15	SCREW 4.2*18	1
16	SCREW 3.9*12	1
17	SCREW 4.2*22	10
18	WASHER	1
19	GUIDE BAR	1
20	STEEL RING 8	1
21	WASHER	1
22	CHAIN ADJUST RETAINING PLATE	1
23	TENSION PIN	1
24	TENSION SCREW	1
25	GUIDE BAR PRESS COVER	1
26	WORM	1
27	SPINDLE CIRCLIP 16	1
28	SPROCKET COVER	1
29	SPRING	1
30	STEEL BALL 3	1
31	TENSION ADJUST- ING WHEEL	1
32	SPROCKET LOCKING KNOB	1

ITEM#	DESCRIPTION	QTY
33	LABEL	2
34	NUT M5	2
35	OIL FILTER PRESS- CAP	1
36	SPONGE	1
37	OIL FILTER TIP	1
38	RUBBER WASHER	1
39	OIL INPUT TUBE	1
40	BEARING 608	1
41	BIG GEAR	1
42	OIL PUMP CONNec- TOR	1
43	OIL PUMP	1
44	OIL OUTPUT TUBE	1
45	BEARING 6002	1
46	ARMATURE	1
47	CARBON BRUSHES	2
48	BRUSH HOLDER	2
49	BRUSH COVER	2
50	STATOR	1
51	BEARING 607	1
52	SPROCKET WASHER	2
53	SPROCKET	1
54	SPINDLE CIRCLIP	1
55	SCREW M5*35	2
56	SCREW M5*25	1
57	LOCKING LEVER	1
58	CONNECTOR	1
59	LOCKING NUT M5	1
60	SPRING LINE	1
61	FIBER TUBE 1	1
62	ALUMINUM TUBE 2	1
63	SUPPORT HANDLE	1
64	SCREW M5*18	2
65	HANDLE COVER	1

ITEM#	DESCRIPTION	QTY
66	STRAP HANG RING	1
67	STRAP FIXING RING	1
68	SCREW M5*12	1
69	NUT M5	1
70	GRIP	1
71	SCREW M5*60	1
72	LEFT ADJUSTABLE HANDLE	1
73	TRIGGER SWITCH LOCK-OUT	1
74	LOCKING SPRING	1
75	SWITCH SPRING	1
76	SWITCH BUTTON	1
77	LEFT FIXING HANDLE	1
78	CONNECTION BLOCK	1
79	RIGHT ADJUSTABLE HANDLE	1
80	SCREW ST4.2*22	1
81	RIGHT FIXING HANDLE	1
82	SCREW ST4.2*22	2
83	Handle Locking Knob	1
84	Switch	1
85	Pressing Plate	2
86	Cord Sleeve	1
87	Power Cord	1
88	Screw ST2.9*12	1
89	Screw ST4.2*16	7
90	Screw ST4.2*16	3
91	Oil Container	1
92	Wrench	1
93	Saw Chain	1
94	Scabbard	1
95	Strap	1

LIMITED WARRANTY

WEN Products warrants its power tools to be free of defects in materials and from workmanship for a period of one (1) year from date of original purchase. We will repair or replace, at our option, any tool covered by this warranty that after inspection is found to be defective in materials or workmanship during the warranty period. If the product is used for commercial, professional or income producing purposes, the limited warranty period is 90 days. If used for rental purposes, the limited warranty period is 30 days.

This limited warranty applies only to the original owner and is not transferable to subsequent owners. The limited warranty begins on the date of purchase by the original owner and extends for the fore-mentioned time periods. This limited warranty does not apply to normal wear and tear, misused, abused, and altered tools. Repairs by unauthorized personnel will void the warranty.

For warranty service, please contact us at 1-888-315-3080 or write to us at WEN Products, PO Box 1110, Dundee, IL 60118. To acquire service, you will have to provide proof of purchase and may be asked to ship the tool back to us freight prepaid.

Under no circumstances shall WEN Products be liable for any indirect, incidental or consequential damages from the sale or use of this product. Some states do not allow the exclusion or limitation of incidental or consequential damages. Some states do not allow limitations on the length of an implied warranty. This warranty provides you with specific legal rights and you may have other rights that vary from state to state.

