



# **User's Manual**

## **Refrigerator**

**Model:HS-160RB/HS-160RW/HS-160RSS**

Before using your product, please read this manual carefully and keep it for future reference.



# CONTENTS

<b>CAUTION.....</b>	<b>1</b>
<b>General.....</b>	<b>1</b>
<b>Installation Instructions.....</b>	<b>1</b>
<b>Safety Precautions.....</b>	<b>1</b>
<b>Use Instructions.....</b>	<b>1</b>
<b>Precautions.....</b>	<b>2</b>
<b>Maintenance.....</b>	<b>2</b>
<b>The following cases are not malfunctions.....</b>	<b>2</b>
<b>WARNING.....</b>	<b>3</b>
<b>How to detect a malfunction.....</b>	<b>3</b>
<b>Thermostat .....</b>	<b>4</b>
<b>OPERATING YOUR REFRIGERATOR.....</b>	<b>5</b>

**CAUTION:**

This appliance is not intended for use by persons (including children) with reduced physical, sensory or mental capabilities, or lack of experience and knowledge, unless they have been given supervision or instruction concerning the use of the appliance by a person responsible for their safety.

Children should be supervised to ensure that they do not play with the appliance.

If the supply cord is damaged, it must be replaced by the manufacturer, its service agent or similarly qualified persons in order to avoid a hazard.

**General**

This type of refrigerator is widely used in places as hotels, offices, student dormitories and houses. It is mostly suitable for refrigerating and preserving foods as fruits and beverage. It offers the advantages of small size, light weight, low electric consumption and ease of use.

**Installation Instructions**

1. Do not tilt the refrigerator more than 45° from upright position while moving it. Do not apply force on any part such as condenser and door to prevent the refrigerator from deforming; this may affect its performance.
2. Allow the refrigerator enough space around to work well.
3. Do not install it in a high temperature of humidity place to avoid damages, dampening and rust.

**Safety Precautions**

1. Before the refrigerator is plugged in, verify that the electric voltage to be used is the same as the rated voltage. The power plug should have an independent socket; the use of an adapter may cause the socket to overheat.
2. Do not store flammable materials as ether, benzene, LP gas, glue etc., inside the refrigerator.
3. Do not splash water on the refrigerator; it may cause malfunction or electric shock.
4. When gas leaks from its pipes, do not pull the plug out or in. it may create sparks and fire.

**Use Instructions**

1. When operating the refrigerator for the first time, run it without loading any food until it auto stops at the desired temperature. It usually takes 2 or 3 hours; then set the thermostat at the setting desired and put the food in the refrigerator.
2. The temperature of the refrigerator can be adjusted by turning the thermostat. A medium setting of the thermostat is the most suitable for general operation.
3. Defrost the freezing compartment whenever the frost layer on the surface of the evaporator reaches 3 or 4 mm. When defrosting, remove all food and set the thermostat at "OFF" position. Put the drip tray under the evaporator to collect melted water. After the frost has melted, discard the melted water and dry up the interior of refrigerator. The refrigerator can then be restarted by turning its thermostat to the desired setting.

## **Precautions**

1. The more food you place inside the refrigerator, the more and longer you open the door, the highest the electric consumption will be, and it may even lead to malfunction.
2. Do not to place heavy, pointed or corroded objects over the board.
3. When you unplug the refrigerator, wait at least ten minutes before re plugging it.
4. Do not store bottled drinks in the freezer, to prevent the bottles from breaking and damaging the refrigerator.
5. Open the door as less as possible when electricity is cut.
6. When defrosting, never use any sharp or metallic objects to remove the frost on the surface of the evaporator as it will damage it.
7. Do not touch foods and containers in the freezing compartment with wet hands to avoid frostbite.

## **Maintenance**

1. While cleaning the refrigerator, pull out the electric power plug, rub carefully with a soft cloth soaked with natural cleanser and then wipe with clean water. Do not use any abrasive cleaning powders, alkali cleansers, chemical cloths, thinner, alcohols, acid petroleum products or hot water, since these are not suitable for cleaning the refrigerator and may damage the painting and plastics.
2. If the door gasket is dirty, clean it frequently.
3. If the refrigerator is going to be out of use for a long time, please pull out the plug, clean it, dry the freezing compartment completely and then close the door tightly.

## **The following cases are not malfunctions:**

1. A flowing water sound: A flowing water sound will be heard under normal operation.
2. Outside condensation: Outside condensation is normal in high humidity conditions. You may just wipe it yourself.
3. It takes some time for the temperature of the freezer and refrigerator compartments to cool after the refrigerator starts to operate; if the temperature of the two compartments is higher while the refrigerator is operating, it takes some time for the temperature of the two compartments to become cold. If the environmental temperature is higher, it takes a longer time to cool the compartments.
4. The surface of the compressor becomes hot: The surface of the compressor may become hot under normal operation. Do not touch it with bare hands.

**WARNING**

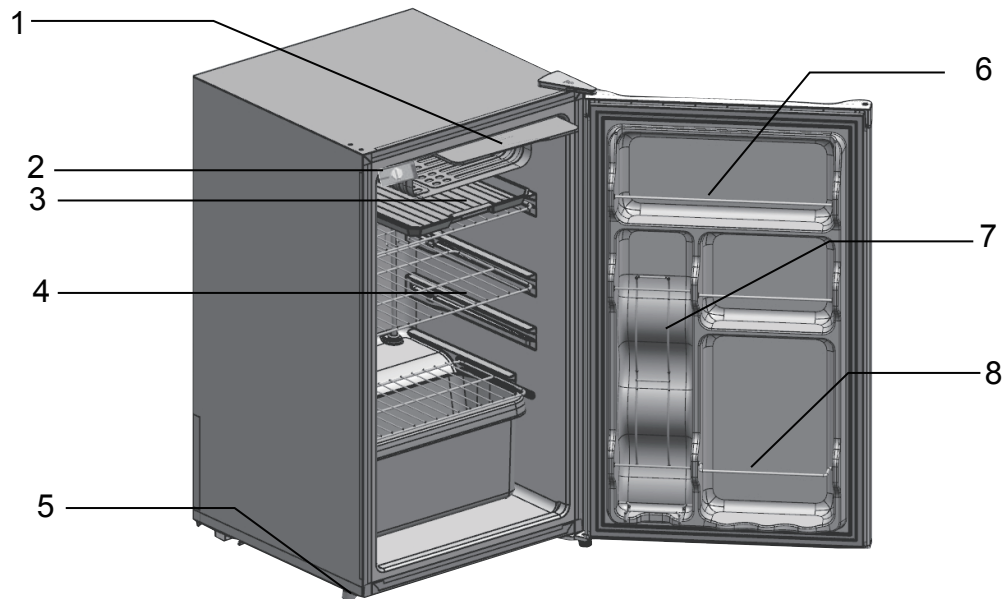
- This appliance is not intended to be used by young children or infirm persons without supervision.
- Young children should be supervised to ensure that they do not play with the appliance

**How to detect a malfunction**

If any malfunction happens, please inspect the appliance according to the following table.

<b>Case</b>	<b>Inspection</b>
Not cooling	Is there electric current? Is the voltage normal? Has the socket fused? Has the plug been put in correctly?
Not efficient	Is the thermostat set to the correct position? Is there enough clearance around the refrigerator? Has the door been opened too frequently or too long? Is the refrigerator exposed to direct sunlight or placed near any heating devices? Is there too much food inside? Is there hot food inside?
Food frozen in the refrigerator compartment	Is the thermostat set to the correct position? Is there too much food inside the refrigerator?
Noises	Is the refrigerator installed firmly? Has the refrigerator been struck by some object?
Compressor cannot stop automatically	Is there too much food inside the refrigerator? Has the door been opened too frequently or too long?

If the above methods are not yet effective, please contact the service department for help without any delay.



**Main Parts:**

- 1. Freezer door
- 2. Thermostat
- 3. Drain pan
- 4. Steel wire shelf
- 5. Leveler leg
- 6. Wire steel bar
- 7. Can bar
- 8. Bottle bar

**Thermostat:**

The thermostat knob is used to adjust the compartment's temperature; you can adjust it according to the environment. At the same environmental temperature, if the number is higher, the compartment's temperature is lower; if the number is lower, the compartment's temperature is higher. The number "0" means off.

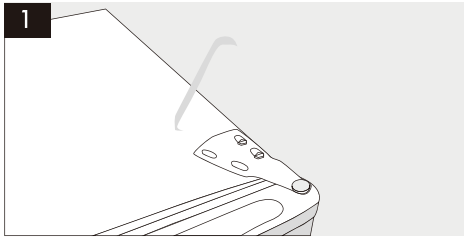
If you feel that the compressor is running for too long or the fresh food compartment shows ice blocks, you may adjust the thermostat knob to a lower number. If the compartment's temperature is higher or the food can be stored for a long time, you may adjust the knob to the larger number; for normal operations, choose the number "3" setting.

The number represent the location of the temperature, does not mean a specific temperature.

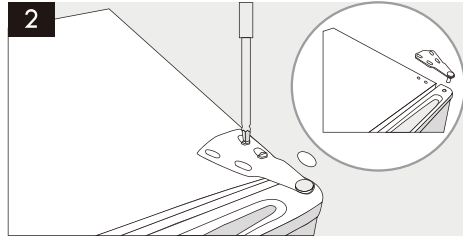
## OPERATING YOUR REFRIGERATOR

### Door reversal

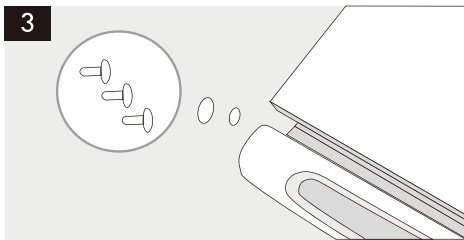
**CAUTION:** To avoid injury to yourself and/or property, we recommend someone assist you during the door reversal process.



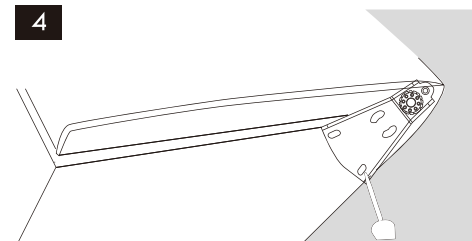
Using a flat blade screwdriver remove the plastic hinge cover from the top of the door. Be careful not to scratch the refrigerator surface.



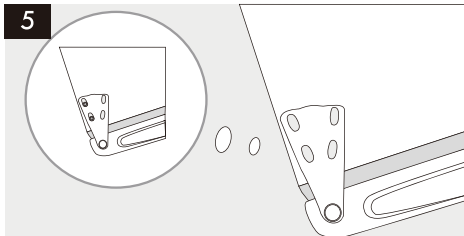
Using a slotted screwdriver, unscrew the two screws from the top hinge bracket. Remove the bracket and underlying paper gasket. Lift and remove the door from the bottom hinge pin. Set door safely aside.



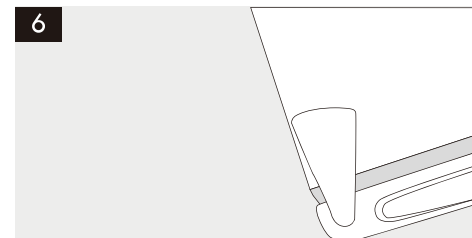
Using a thin-bladed tool, carefully pry up and remove the hole plugs on top of the door and the top of the opposite side of the cabinet. Insert plugs into the provided holes on opposite side of door and into the holes exposed by the removal of the top hinge bracket.



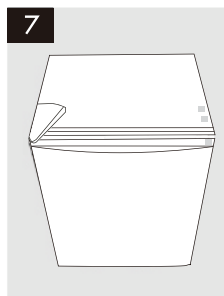
Using a slotted screwdriver, remove the two screws attaching the bottom hinge bracket to the refrigerator cabinet. Unscrew the foot from the other side of the cabinet. Avoid tilting the refrigerator more than 45 degrees when removing the bottom bracket and foot. Attach bracket and foot to the opposite side from where they were removed.



Insert top bracket hinge pin into the hole on top of the door. Use the two previously removed screws to attach back of top bracket to cabinet. Be sure to align the paper gasket beneath the two attachment holes in the bracket.



Replace the plastic hinge cover over the top hinge bracket.



Check that the door is aligned horizontally and vertically and that the seals are closed on all sides before finally tightening the top hinge. Readjust the leveling foot. Turn clockwise to lower and counterclockwise to raise the level.

For household refrigerating appliances, information shall be provided in the instruction booklet provided by manufacturers concerning:

- The combination of drawers, baskets and shelves that result in the most efficient use of energy for the appliance, and
- How to minimize the energy consumption of the household refrigerating appliance in the use-phase.



For more information, please visit our website  
[www.midea.com](http://www.midea.com)

