



## Safety Information

# IMPORTANT SAFETY INSTRUCTIONS

When using electrical products, basic precautions should always be followed including the following:

- a) **READ AND FOLLOW ALL SAFETY INSTRUCTIONS.**
- b) This product is for indoor use only. The electrical rating 0.5 A 120 V 60 Hz.
- c) Do not use seasonal products outdoors unless marked suitable for indoor and outdoor use. When products are used in outdoor applications, connect the product to a Ground Fault Circuit Interrupting (GFCI) outlet. If one is not provided, contact a qualified electrician for proper installation.
- d) This seasonal use product is not intended for permanent installation or use.
- e) Do not mount or place near gas or electric heaters, fireplace, candles or other similar sources of heat.
- f) Do not secure the wiring of the product with staples or nails, or place on sharp hooks or nails.
- g) Do not let lamps rest on the supply cord or on any wire.
- h) Unplug the product when leaving the house, when retiring for the night, or if left unattended.
- i) This is an electric product – not a toy! To avoid risk of fire, burns personal injury and electric shock it should not be played with or placed where small children can reach it.
- j) Do not use this product for other than its intended use.
- k) Do not hang ornaments or other objects from cord, wire, or light string.
- l) Do not close doors or windows on the product or extension cords as this may damage the wire insulation.
- m) Do not cover the product with cloth, paper or any material not part of the product when in use.
- n) This product is equipped with push-in type lamps. Do not twist lamps.
- o) Read and follow all instructions that are on the product or provided with the product.

## p) SAVE THESE INSTRUCTIONS.

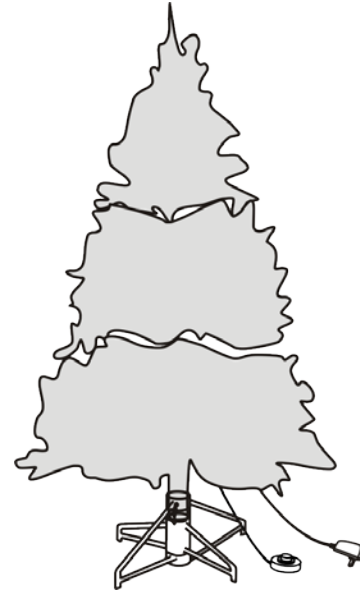
## Pre-Assembly

### Package Contents

Part	Description	Quantity
A	Tree top	1
B	Tree center	1
C	Tree bottom	1
D	Tree stand	1
E	Foot pedal switch	1
F	Adaptor	1

## 7.5' Yukon Spruce Color Changing Quick Set Tree

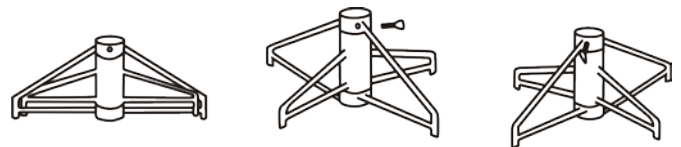
SKU# 691824



## Assembly

### Assembling the tree stand

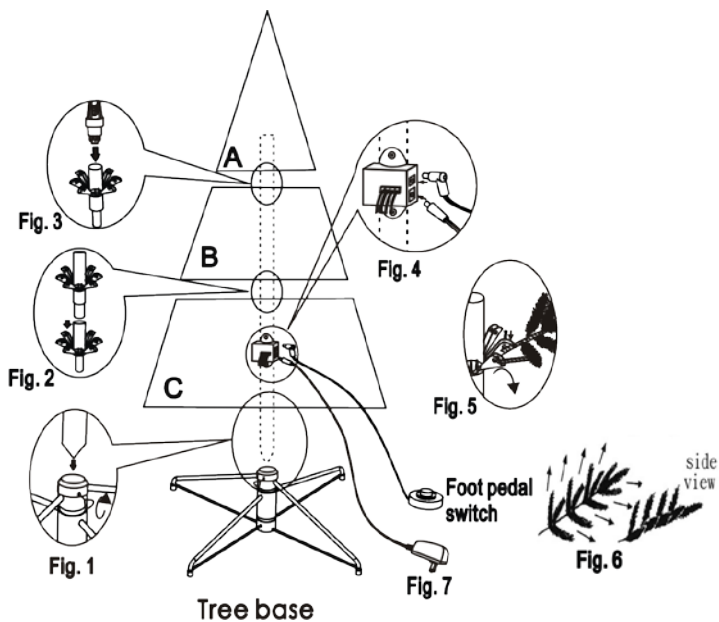
- Step 1. Choose a location near a wall outlet.
- Step 2. Open the stand to a 90 degree angle until the hole lines up with the hole on the tube.
- Step 3. Screw an eye bolt into the hole.



### Assembling the tree

Please remove protective covers from the base of the pole for each tree section before assembling.

- Step 1. Insert tree bottom (C) into the tree stand (D) and tighten the screw. (See Fig. 1)
- Step 2. Insert tree center (B) into the tree bottom (C). (See Fig. 2) Rotate tree center (B) slightly to ensure it matches the tree bottom (C) and there is proper circuit connection if lights are not functioning.
- Step 3. Insert the tree top (A) into the tree center (B). (See Fig. 3) Rotate the tree top (A) slightly to ensure it matches the upper middle section (B) and there is proper circuit connection if lights are not functioning.
- Step 4. Insert the provided foot pedal switch and adaptor separately into the tree bottom (C) according to the magnified drawing (See Fig. 4).
- Step 5. Allow branches to fall into place or gently pull branches up and out. When adjusting branches be sure that all wires are free of branch hinges. (See Fig. 5)
- Step 6. Shape the branches. Starting with tips closest to the pole, shape one tip to the right, one to the left and one at the center of the main stem. Repeat pattern for each branch. (See Fig. 6)
- Step 7. This tree is color changing – just press the button on the foot pedal switch for changing functions. The 8 lighting options available are, Steady Warm White, Warm White rippling, Steady Multi, Multi Rippling, Color Changing, Warm White Cascade then Multi cascade, Color Changing Cascade and Magician.



## Troubleshooting

Problem	Solution
The tree does not light	Ensure that all tree sections are plugged into each other and that the tree is plugged into the wall outlet. Make sure the foot pedal switch and adaptor are well connected to the bottom section (C).
	Check for loose, broken, or missing bulbs and replace as needed with the replacement bulbs provided.
	If you are still experiencing problems with the tree please call 1-877-527-0313 for instructions.

**Warning:** Changes or modifications to this unit not expressly approved by the party responsible for compliance could void the user's authority to operate the equipment.

## Operation

### Turning on the tree

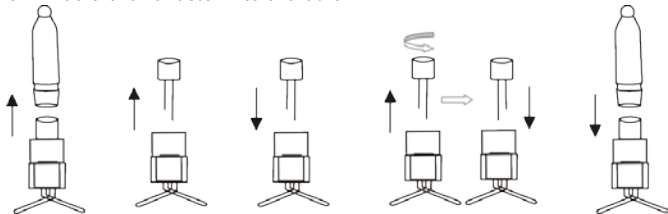
NOTE: If some bulbs do not light or flicker, search for any loose, broken bulbs and/or missing bulbs. Replace bulbs promptly with the replacement bulbs provided in order to maintain the performance and life expectancy of your tree.

Step 1. Connect each tree section well and plug the power cord into a wall outlet.

## Maintenance

### Replacing the low-voltage lamps

1. Grasp plug and remove from its power source.
2. Remove the reflector of the bulb.
3. Pull bulb straight out of socket. Do not twist bulb.
4. Replace burned-out bulb with 3.0 volt, 0.06 watt LED bulb ONLY. Directly insert the LED bulb into the lampholder.
5. If the bulb doesn't light up, change the LED bulb's direction to insert into the lampholder (replacement bulbs are provided).
6. Insert the reflector into the bulb.



**CAUTION!** — ALWAYS UNPLUG YOUR TREE FROM ITS POWER SOURCE BEFORE ATTEMPTING BULB REPLACEMENT.

## Care and Cleaning

- Step 1. Remove all ornaments and decorations.
- Step 2. Unplug the plug cord from the wall outlet.
- Step 3. Gently lift the tree top straight up to remove from the center section and fold all branches towards the pole.
- Step 4. Repeat this step for the center and bottom tree sections.
- Step 5. Carefully place all tree sections into a shipping box and tape it shut.
- Step 6. Store your tree in a cool, dry place away from sunlight.

**NOTE:** This equipment has been tested and found to comply with the limits for a Class B digital device, pursuant to Part 15 of the FCC Rules. These limits are designed to provide reasonable protection against harmful interference in a residential installation. This equipment generates, uses and can radiate radio frequency energy and, if not installed and used in accordance with the instructions, may cause harmful interference to radio communications.

However, there is no guarantee that interference will not occur in a particular installation. If this equipment does cause harmful interference to radio or television reception, which can be determined by turning the equipment off and on, the user is encouraged to try to correct the interference by one or more of the following measures: Reorient or relocate the receiving antenna. Increase the separation between the equipment and receiver.

Connect the equipment into an outlet on a circuit different from that to which the receiver is connected. Consult the dealer or an experienced radio/TV technician for help.