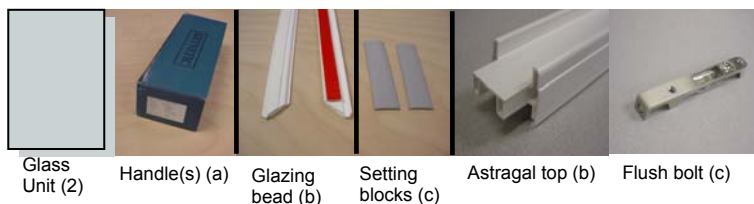
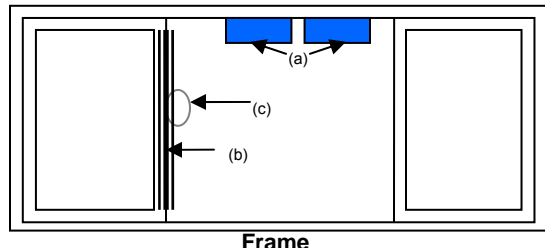


## CONTEMPORARY PATIO DOOR ASSEMBLY INSTRUCTIONS

### Parts Identification:



### Preparation:

- 1) Remove the handle box(es), setting blocks, pre-cut door and screen astragal as well as pre-cut glazing bead from the patio door frame. Ensure all parts are present before removing existing door.
- 2) Tools required: Vinyl snips, 2lb. dead blow non-scuffing hammer (see fig.2).
- 3) Install the frame into the designated opening.
- 4) Once the frame has been properly installed and leveled, proceed to glaze the patio door fixed panels.

### Glazing your Contemporary Patio Door:

- 1) Peel off the backing of the glazing tape.
- 2) Apply sealant where the glazing tape meets at each corner.
- 3) Apply setting blocks provided to the bottom of the fixed panel 3" to 4" away from jamb ensuring that weep hole is not covered by the setting block. (see Fig 1)  
**Note:** White setting blocks are for French Rail doors and grey setting blocks are for Contemporary doors.
- 4) Identify the appropriate insulated glass unit to be glazed.
- 5) Ensure that the insulated glass unit is installed with surface 4 facing the inside of the house. Follow the indications on the label on surface 4 of the insulated glass unit. **Warning:** Insulated glass units are heavy and difficult to handle. More than one person might be required to perform this operation.
- 6) Notch snapping leg at a 45 degree angle from the tip of the bead so it does not interfere with the weld.
- 7) Install the top glazing bead first and then the bottom glazing bead.
- 8) Install the glazing bead on the sides of the fixed panel as shown in (Fig. 2)  
**Note:** Applying glass cleaning solution between the glass and the bead could ease the bead installation.
- 9) Apply caulk to fill any gaps at the corners after the glazing bead has been installed. Wipe off any excess caulk. **Note:** If the gap is bigger than 1/16" the bead will have to be re-ordered or re-cut.



### Operating sash and screen installation:

#### On 3 Panel Doors:

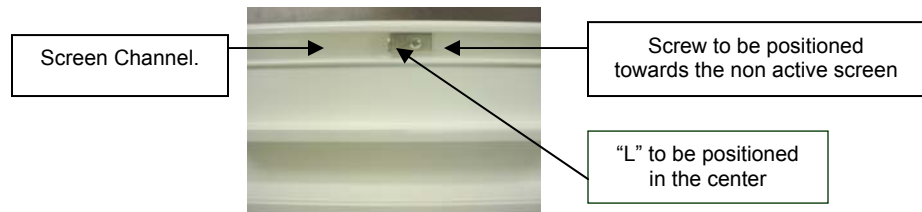
- 1) Adjust the sash wheels to the fully recessed position before installing the sash into the frame.
- 2) Install the sash into the patio door frame. **Warning:** Patio door sashes are heavy and difficult to handle. More than one person might be required to perform this operation.
- 3) Adjust sash wheels for proper operation ensuring that the sash is squared and leveled to the patio door frame and/or fixed sashes. **Note:** Improper wheel adjustment will lead to handle, grids, and/or reveal misalignment.

## CONTEMPORARY PATIO DOOR ASSEMBLY INSTRUCTIONS

- 4) Install the keeper to the astragal following the installation instructions included in the patio door handle box.  
**Note:** DO NOT use the 4" screws to install the keeper. Use the 1.5" self tapping screws provided.
- 5) Install your patio door screen following the instructions on the frame of the screen.

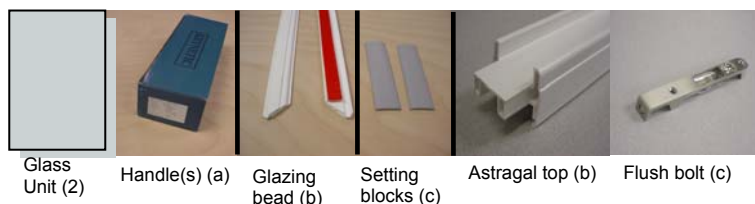
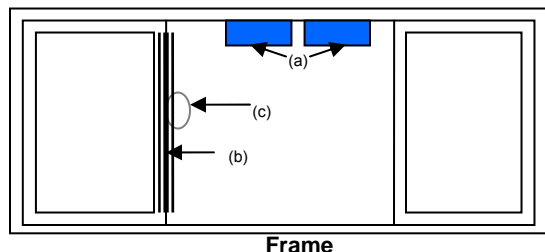
### On 4 Panel Doors:

- 1) Adjust the sash wheels to the fully recessed position before installing the sash into the frame.
- 2) Install the sash into the patio door frame. **Warning:** Patio door sashes are heavy and difficult to handle. More than one person might be required to perform this operation.
- 3) Adjust sash wheels for proper operation ensuring that the sash is squared and leveled to the patio door frame and/or fixed sashes. **Note:** Improper wheel adjustment will lead to handle, grids, and/or reveal misalignment.
- 4) Install the patio door active handle to the operating sash.
- 5) Install the dummy handle to the keeper sash.
- 6) Install the pre-fabricated astragal to the keeper sash by applying a bead of caulking along both sides of the U-shaped channel of the astragal. Secure it by applying the self tapping 1.5" screws provided every 12 inches. Ensure that the roller adjustment screws are visible.
- 7) Install the keeper to the astragal following the installation instructions included in the patio door handle box.  
**Note:** DO NOT use the 4" screws to install the keeper. Use the 1.5" self tapping screws provided.
- 8) Install the secondary flush bolt into the top portion of the astragal.
- 9) Install flush bolt plate on the header of the door by following the next steps:
  - a. After closing the door, mark the flush bolt hole location.
  - b. Drill flush bolt hole using a 3/8" drill bit. **Note:** Hole should be NO deeper than 1/4".
  - c. Install flush bolt plate using the screws provided.
- 10) Install active screen following the instructions on the frame of the screen.
- 11) Install dummy screen following the next steps:
  - a. Remove screen handle.
  - b. Remove screen lock from the handle.
  - c. Re-install dummy screen handle.
  - d. Install dummy screen following the instructions attached to the screen frame.
  - e. Adjust screen rollers in order to ensure dummy handle aligns with the active screen handle.
- 12) Once both screens are installed, install patio door screen astragal following the next steps:
  - a. Adjust wheel height to ensure proper operation and match handle height.
  - b. Install screen astragal to the dummy screen keeping the inside leg of the astragal flush to the screen.
  - c. Attach screen keeper following the installation instructions attached to the screen.
  - d. Check for screen operation and ensure that it locks properly.
- 13) Install Screen Stops (L-Bracket)
  - a) Measure frame width and mark center of screen channel on the head (Top)
  - b) Position screen stop in the center, screw hole to be on the non active screen. Refer to photo.
  - c) Install screws



## FRENCH RAIL PATIO DOOR ASSEMBLY INSTRUCTIONS

### Parts Identification:

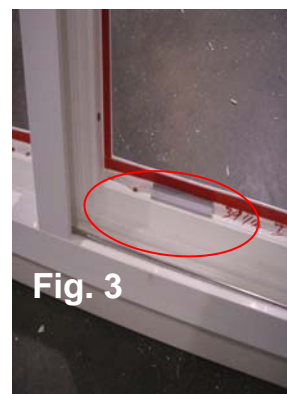


### Preparation:

- 1) Remove the handle box(es), setting blocks, pre-cut door and screen astragal as well as pre-cut glazing bead from the patio door frame. Ensure all parts are present before removing existing door.
- 2) Tools required: Vinyl snips, 2lb. dead blow non scuffing hammer (see fig.2)
- 3) Install the frame into the designated opening.
- 4) Once the frame has been properly installed and leveled, proceed to glaze the patio door fixed panels.

### Glazing your French Rail Patio Door:

- 1) Apply a small (1/8") bead of caulk along the entire length of the glazing bead channel as shown in Fig. 1. **Note:** DO NOT allow the caulk to set up before inserting the glazing bead.
- 2) Begin by inserting the glazing bead with the pre-applied glazing tape into the back glazing bead channel (the channel toward the inside of the house) at the bottom of the fixed panel. Next, insert the pre-taped glazing bead into the sides and finish by inserting the pre-taped glazing bead into the top.
- 3) Peel off the backing of the glazing tape.
- 4) Apply sealant where glazing tape meets at each corner.
- 5) Apply setting blocks provided to the bottom of the fixed panel 3" to 4" away from jamb ensuring that weep hole is not covered by the setting block. (see Fig 3)  
**Note:** White setting blocks are for French Rail doors and grey setting blocks are for Contemporary doors.
- 6) Identify the appropriate insulated glass unit to be glazed.
- 7) Ensure that the insulated glass unit is installed with surface 4 facing the inside of the house. Follow the indications on the label on surface 4 of the insulated glass unit. **Warning:** Insulated glass units are heavy and difficult to handle. More than one person might be required to perform this operation.
- 8) Notch snapping leg at a 45 degree angle from the tip of the bead so it does not interfere with the weld.
- 9) Install the top glazing bead first and then the bottom glazing bead.
- 10) Install the glazing bead on the sides of the fixed panel as shown in (Fig. 2)  
**Note:** Applying glass cleaning solution between the glass and the bead could ease the bead installation.
- 11) Apply caulk to fill any gaps at the corners after the glazing bead has been installed. Wipe off any excess caulk. **Note:** If the gap is bigger than 1/16" the bead will have to be re-ordered or re-cut.



### Operating sash and screen installation:

#### On 3 Panel Doors:

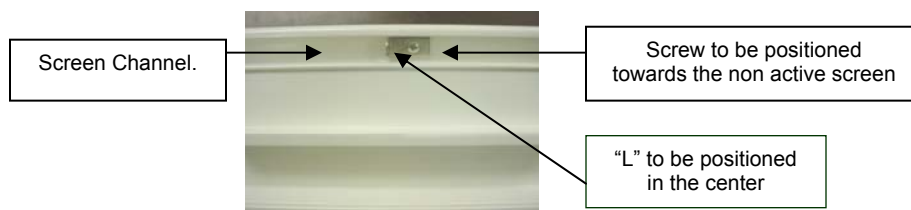
- 1) Adjust the sash wheels to the fully recessed position before installing the sash into the frame.
- 2) Install the sash into the patio door frame. **Warning:** Patio door sashes are heavy and difficult to handle. More than one person might be required to perform this operation.

## **FRENCH RAIL PATIO DOOR ASSEMBLY INSTRUCTIONS**

- 3) Adjust sash wheels for proper operation ensuring that the sash is squared and leveled to the patio door frame and/or fixed sashes. **Note:** Improper wheel adjustment will lead to handle, grids, and/or reveal misalignment.
- 4) Install the keeper to the astragal following the installation instructions included in the patio door handle box. **Note:** DO NOT use the 4" screws to install the keeper. Use the 1.5" self tapping screws provided.
- 5) Install your patio door screen following the instructions on the frame of the screen.

### **On 4 Panel Doors:**

- 1) Adjust the sash wheels to the fully recessed position before installing the sash into the frame.
- 2) Install the sash into the patio door frame. **Warning:** Patio door sashes are heavy and difficult to handle. More than one person might be required to perform this operation.
- 3) Adjust sash wheels for proper operation ensuring that the sash is squared and leveled to the patio door frame and/or fixed sashes. **Note:** Improper wheel adjustment will lead to handle, grids, and/or reveal misalignment.
- 4) Install the patio door active handle to the operating sash.
- 5) Install the dummy handle to the keeper sash.
- 6) Install the pre-fabricated astragal to the keeper sash by applying a bead of caulking along both sides of the U-shaped channel of the astragal. Secure it by applying the self tapping 1.5" screws provided every 12 inches. Ensure that the roller adjustment screws are visible.
- 7) Install the keeper to the astragal following the installation instructions included in the patio door handle box. **Note:** DO NOT use the 4" screws to install the keeper. Use the 1.5" self tapping screws provided.
- 8) Install the secondary flush bolt into the top portion of the astragal.
- 9) Install flush bolt plate on the header of the door by following the next steps:
  - a. After closing the door, mark the flush bolt hole location.
  - b. Drill flush bolt hole using a 3/8" drill bit. **Note:** Hole should be NO deeper than 1/4".
  - c. Install flush bolt plate using the screws provided.
- 10) Install active screen following the instructions on the frame of the screen.
- 11) Install dummy screen following the next steps:
  - a. Remove screen handle.
  - b. Remove screen lock from the handle.
  - c. Re-install dummy screen handle.
  - d. Install dummy screen following the instructions attached to the screen frame.
  - e. Adjust screen rollers in order to ensure dummy handle aligns with the active screen handle.
- 12) Once both screens are installed, install patio door screen astragal following the next steps:
  - a. Adjust wheel height to ensure proper operation and match handle height.
  - b. Install screen astragal to the dummy screen keeping the inside leg of the astragal flush to the screen.
  - c. Attach screen keeper following the installation instructions attached to the screen.
  - d. Check for screen operation and ensure that it locks properly.
- 13) Install Screen Stops (L-Bracket)
  - a) Measure frame width and mark center of screen channel on the head (Top)
  - b) Position screen stop in the center, screw hole to be on the non active screen. Refer to photo.
  - c) Install screws



4

3

2

1

MODEL DESIGNATION:

Simonton Series 159–175 and 160–175 2–Panel Vinyl Patio Doors

MAXIMUM OVERALL NOMINAL SIZE:

2–Panel Door up to 96" x 96" (8080)

DESIGN PRESSURE RATING:

Positive: 20.0 PSF  
Negative: 20.0 PSF

USABLE CONFIGURATIONS:

XO, OX

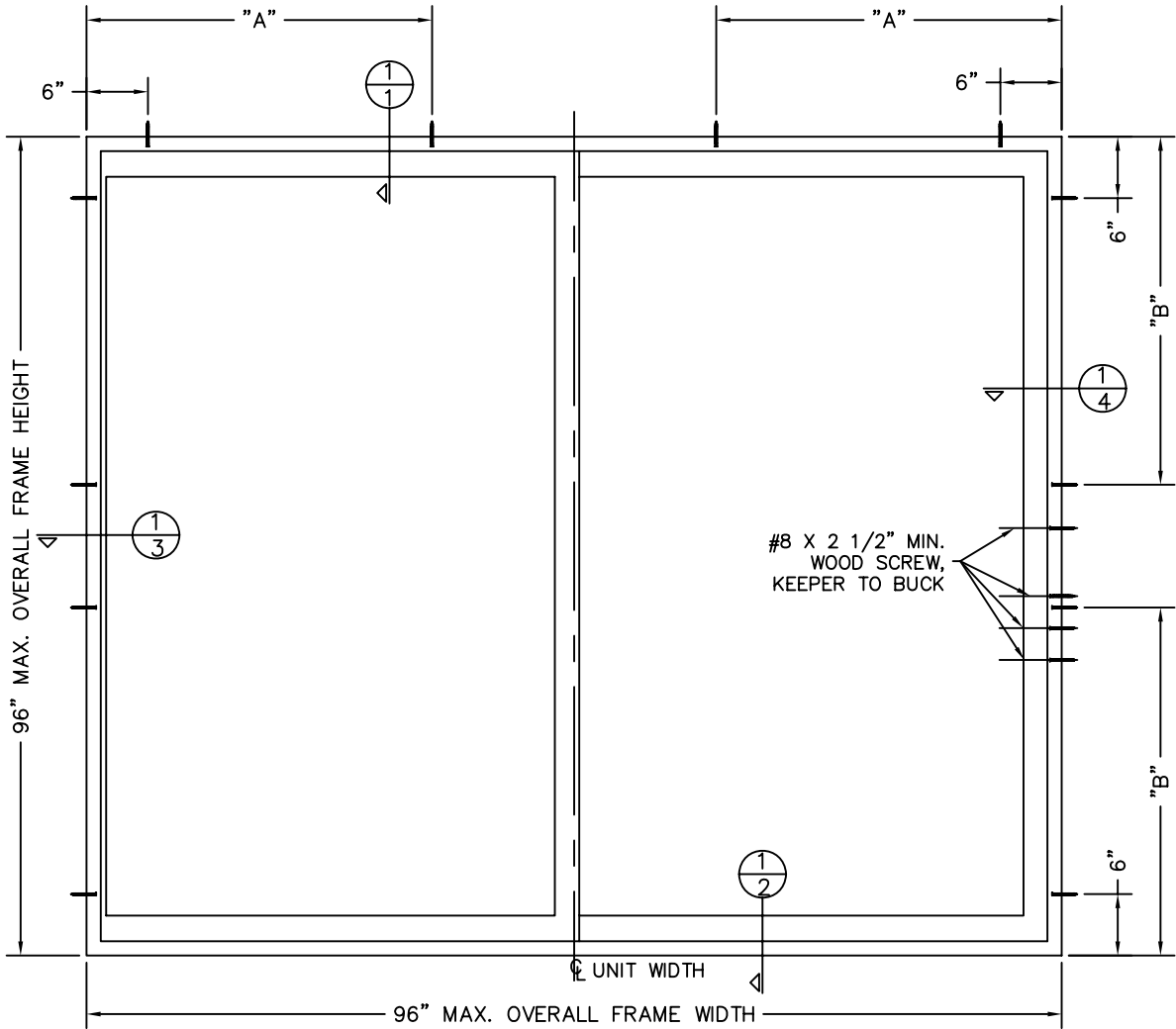
GENERAL DESCRIPTION:

The head, sill, and side jambs are extruded PVC. The wall thickness through which the anchor screw penetrates is a minimum of 0.090".

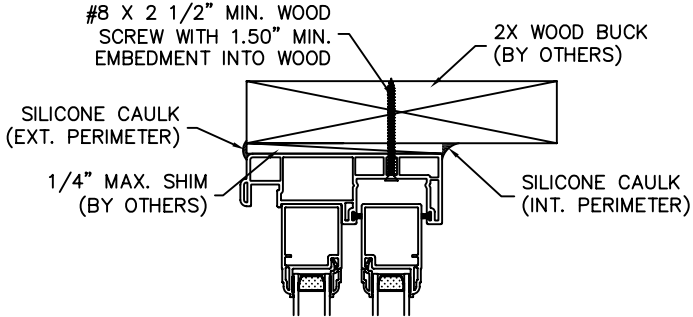
REV. #:	REVISIONS:	REVISED BY:	DATE:
.	.	.	.
.	.	.	.
.	.	.	.
.	.	.	.
.	.	.	.

B

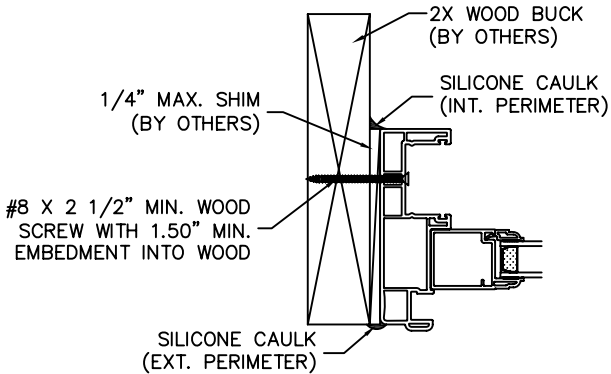
A



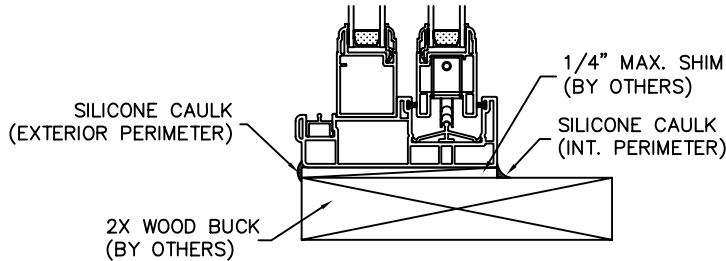
INSTALLATION ANCHOR LOCATION		
DOOR SIZE	"A"	"B"
5068	22"	28 5/8"
5080	22"	34"
6068	26"	28 5/8"
6080	26"	34"
8068	34"	28 5/8"
8080	34"	34"



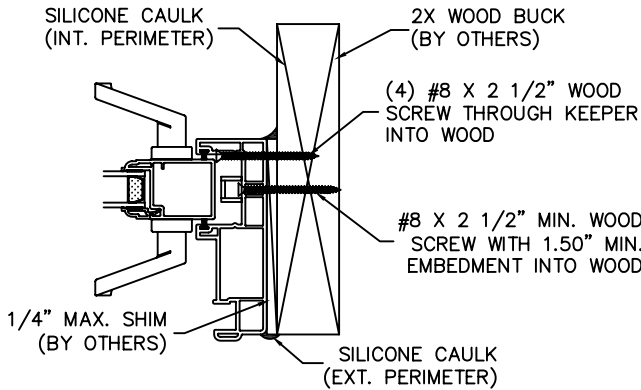
1/1 HEAD  
4X SCALE



1/3 FIXED PANEL JAMB  
4X SCALE




1/2 SILL  
4X SCALE



1/4 KEEPER JAMB  
4X SCALE

GENERAL NOTES:

- Contemporary patio door sash shown. Installation also applicable for doors with 'French Rail' sash.
- All interior and exterior perimeter surfaces of the door must be caulked.
- The responsibility for selection of Simonton products to meet any applicable local laws, building codes, ordinances, or other safety requirements rests solely with the architect, building owner, or contractor.
- Shims are optional. Maximum shim stack is 1/4".
- Wood bucks (by others) must be engineered and anchored properly to transfer loads to the structure.
- Anchors shall be specified and spaced as shown. Anchor embedment to base material shall be beyond wall dressing or stucco and into wood.
- When used in areas requiring impact protection, approved impact resistant shutters or other external protection must be installed.
- Flashing should be applied using the ASTM E 2112 method appropriate for the opening into which the door is being installed.
- Installation anchors should be at least 3/4" from the edge of the wood.
- Glazing shall comply with ASTM E 1300–04.

<div>DISCLOSURE STATEMENT</div> <div>This document is the property of Simonton Windows, which retains all proprietary and other rights to its subject matter. This document is provided to the recipient on the expressed condition that it is not to be disclosed, reproduced in whole or part, nor used in conjunction with the design, manufacture or repair of goods for anyone other than Simonton Windows without its consent. This restriction does not limit the recipient's rights to utilize information contained in this document which is properly obtained from another source.</div> <div>FILE: IN0563</div>	MATERIAL:		<div>Dimensional Tolerances Unless Otherwise Specified</div> <div>Decimals      Angles</div> <div>.X ± .03 .XX ± .01 .XXX ± .005</div> <div>0°   30 min.</div>	<div><div>SIMONTON® W I N D O W S</div><div>1 Cochrane Avenue Pennsboro, WV 26415</div></div> <div>SCALE: <div>FIT</div>    SHEET: <div>1 of 1</div></div> <div>SERIES: <div>159–175 AND 160–175 2–PANEL PATIO DOOR</div></div> <div>TITLE: <div>2X BUCK RETROFIT INSTALLATION</div></div>	SIZE: <div>B</div> DRAWING NO.: <div>IN0563</div> REV.: <div>–</div>
	RMS FINISH:				DRAWN BY: <div>T.D.D.</div> DATE: <div>01/13/14</div>
	ALLOY & TEMPER:				CHECKED BY:    DATE:
	WEIGHT:	VOLUME:			APPR'V'D BY:    DATE:
	SURFACE AREA:	PERIMETER:			
FINISH TREATMENT:					