

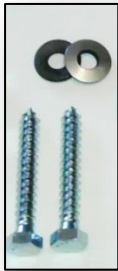
## Thunder Mount System Overhead Garage Door Opener Installation Instructions

### Tools/Items Needed:

- $\frac{9}{16}$ " socket and wrench
- $\frac{1}{2}$ " socket and wrench socket wrench
- Power Drill socket driver  $\frac{1}{8}$  inch drill bit
- Six foot ladder
- Contact Cement

### IN THE BOX:

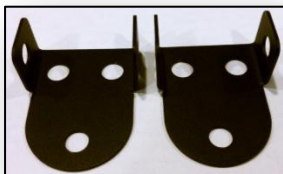
Figure 1: Instructions 1-Channels, 2 Cradle's, 2 adjustable shaft parts, 1 Isolators, 1 chrome rings, Hardware.



Channel Mounting Hardware



Channel



Cradle's.



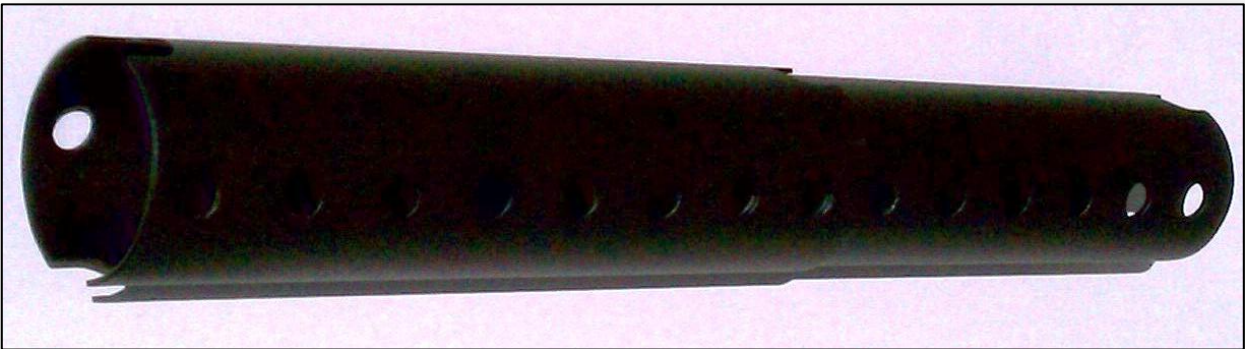
Cradle Hardware



**IN THE BOX: cont.**



Adjustable Shaft's Hardware



Adjustable Shaft's



Thunder Mount Multi-fit Base.



Thunder Mount Base Hardware



### **DIRECTIONS:**

#### Installation Thunder Mount above the Ceiling

Lay out all hardware in the order to be assembled.



#1 Base

#2 Channel

#3 Cradles

#4 Adjustable Shafts.

1. Locate the joists above the ceiling (solid wood supports) where the Thunder Mount channels will attach. Thunder Mount's patented channel and cradle design is able to be placed in one of two directions (depending on how your house is built) and the cradles can be attached in one of two directions and anywhere along the channel.



### **Installation Thunder Mount Above the Ceiling Cont.:**



2. Directly below the channel cut a 2.5/8" inch hole at the exact location for the Shaft to go through the ceiling / drywall.



Seen here is a Thunder Mount Channel Mounted above the Supports

3. Attach the cradles to the channel facing each other above the hole where the shafts pass through the ceiling and where the channel can be supported securely. #2 hardware.
4. Drill 1/8 x 1 inch deep holes in the structure to attach the Channels. Place the Isolation strip below the channel by cutting them in half and placing the half's at the point in between where the Channel meets the supports. #2 hardware.



### **Mounting Thunder Mounts above the ceiling cont.:** Rev 11, 2011

It helps to have the hardware go through the holes of the Isolator. Fold and Place the Isolator between the Supports and the Channel. Fasten to tighten to supports well.



5. Place the chrome ring over the hole and glue it to the ceiling.  
(Glue not included, contact cement works best)
6. You will need two people to do this next step.  
Attach the shafts to the Cradles by passing the shafts  
Through the ceiling and with the #3 set 2.5 x 9/16<sup>th</sup> nuts and  
Bolts included in the kit. Secure the nuts and bolts good and  
Tight.
7. Attach and Secure Shafts with the nut and bolts  
Hardware #3.  
Recheck all the nuts and bolts and Re-tighten them.



## **Mounting Thunder Mount System below the ceiling:** Rev 11, 2011

1. Attach Thunder Mounts vibration isolation pad by removing  
The paper to reveal the sticky side. Attach it to the back of the  
Channel. Use the isolation washers included to complete the  
Vibration isolation.



Lay out all the hardware in the order to be assembled.



#1

#2

#3

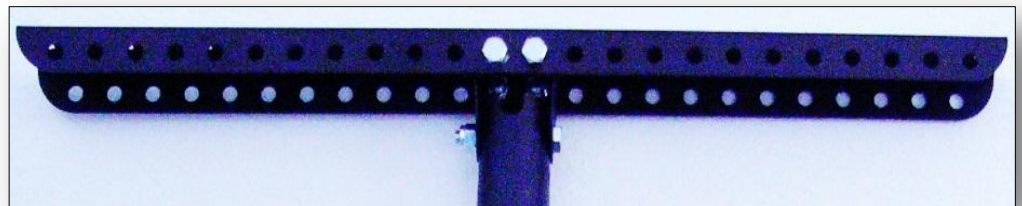
#4

2. Locate the solid wood supports above from where to attach the Channel. Thunder Mounts Patented Channel and Cradle's design are able to be placed in two Directions depending on how your house is built, and the Cradles can be attached anywhere along the channel. Mark that location and Pre-Drill the holes with a 1/8 inch drill Bit and drill 1" deep.

3. Attach the Channel Square with the door with isolation pad and Washer isolators to Secure support structure (#2) hardware.

**Mounting Thunder Mount System below the ceiling:** Rev 11, 2011

4. Attach the Cradles Directly Above the



Opener.

Use #3

Hardware included in the kit.

5. Attach the shafts to the cradles (#4) hardware.

Adjust the height. Recheck all the nuts and bolts and  
Secure them well!

See installation process on [www.thundermounts.com](http://www.thundermounts.com)

Serious Injury and or Property Damage Can Occur if  
Installation Instructions are Not Followed Properly and Voids Any Warranty.



Thank You for Purchasing a Thunder Mount System