

OWNERS MANUAL

Model No.'s

45-01011

45-01713

45-02401

45-01841

190-653A-000

190-653A-100

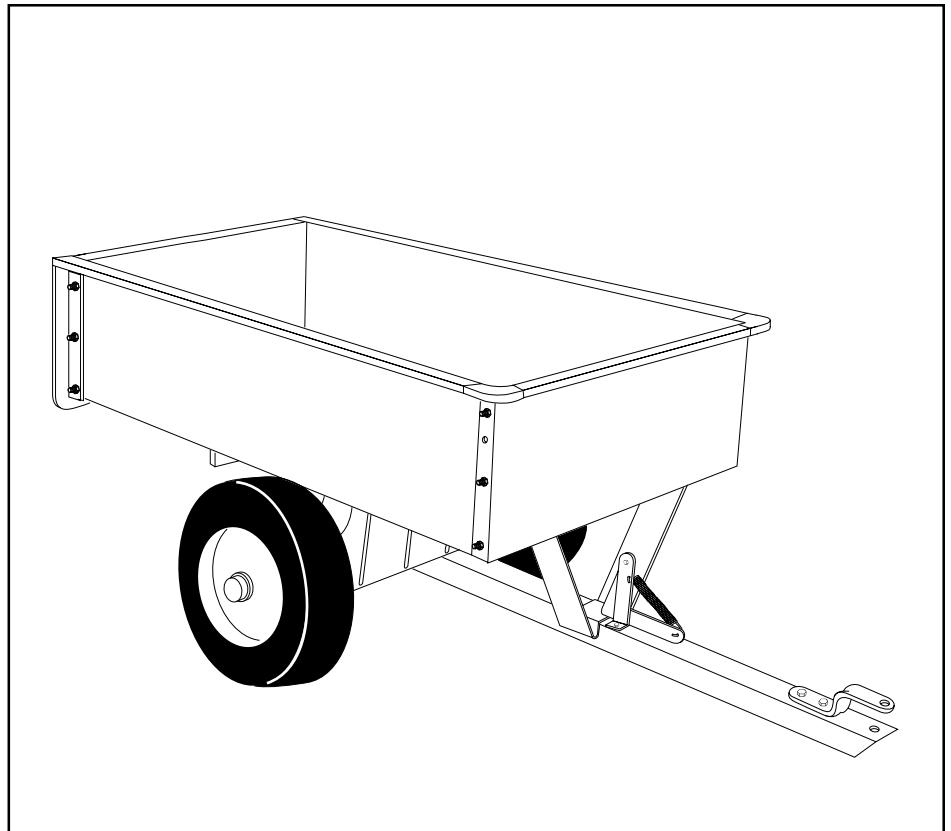
190-653A-190

190-368B-100

190-425A-100

190-425A-190

CAUTION:
Read Rules for
Safe Operation
and Instructions
Carefully



UTILITY CARTS

(SEE SPECIFICATIONS ON PAGE 7)


- Assembly
- Operation
- Maintenance
- Repair Parts

SAFETY RULES

Remember, any power equipment can cause injury if operated improperly or if the user does not understand how to operate the equipment. Exercise caution at all times when using power equipment.



LOOK FOR THIS SYMBOL TO POINT OUT IMPORTANT SAFETY PRECAUTIONS. IT MEANS -- ATTENTION! BECOME ALERT! YOUR SAFETY IS INVOLVED.



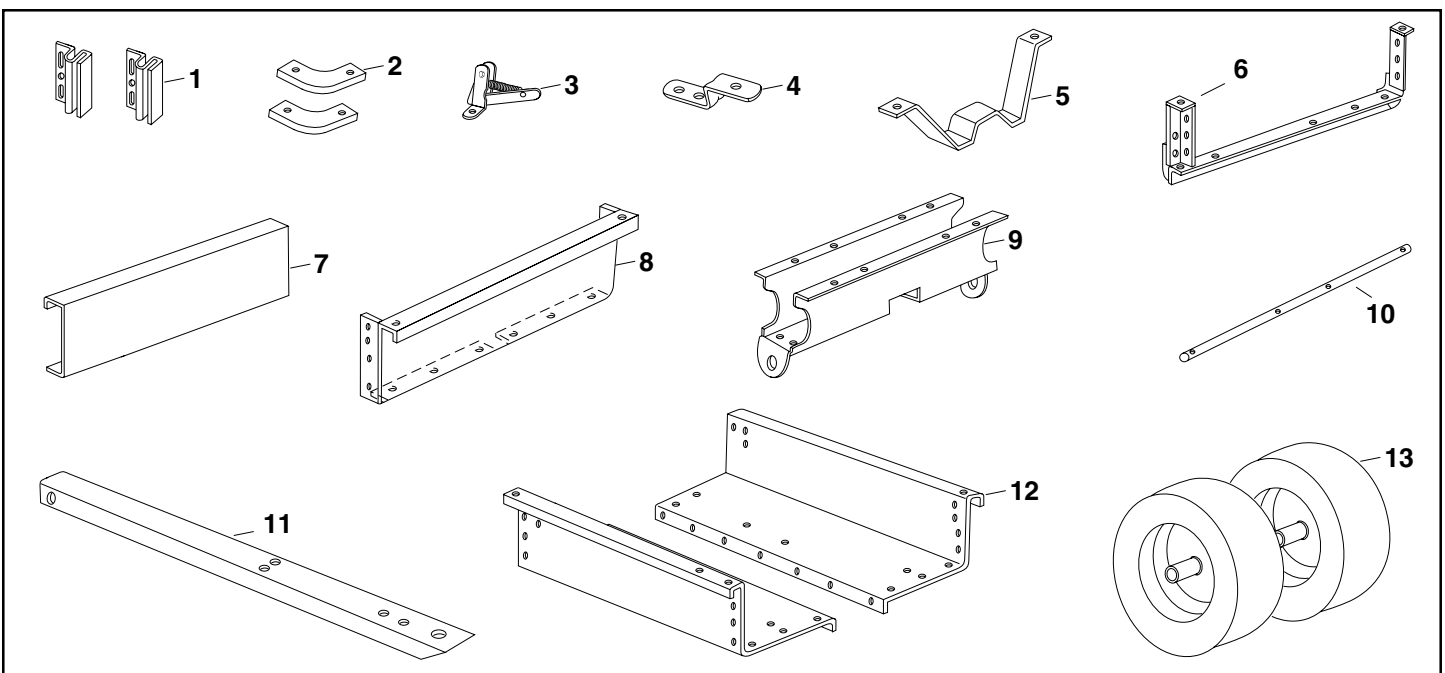
CAUTION: VEHICLE BRAKING AND STABILITY MAY BE AFFECTED WITH THE ADDITION OF AN ACCESSORY OR AN ATTACHMENT. BE AWARE OF CHANGING CONDITIONS ON SLOPES.

Exercise caution at all times when using power equipment.

- Read this owners manual before attempting to assemble or operate the cart.
- Read the vehicle owners manual and know how to operate your tractor, before using the cart attachment.
- Do not at any time carry passengers in this cart. It has not been designed to carry passengers.
- Never allow children to operate the tractor or the cart attachment.
- Do not allow adults to operate the tractor or cart attachment without proper instructions.
- Always begin with the transmission in first (low) and gradually increase speed as conditions permit.
- Tow the cart at reduced speed over rough terrain and hillsides or near creeks and ditches to prevent tipping over and loss of control. Do not drive too close to a creek or ditch.
- Vehicle braking and stability may be affected with the attachment of this cart. Do not fill cart to maximum weight capacity without checking the capability of the towing vehicle to safely pull and stop with the cart attached.
- Before operating vehicle on any grade (hill) refer to the safety rules in the vehicle owner's manual concerning safe operation on slopes. Refer also to the slope guide on page 11 of this manual. **Stay off steep slopes!**
- Do not tow this cart on highways or on public thoroughfares.
- Maximum towing speed is 10 m.p.h.
- Follow maintenance and lubrication instructions as outlined in this manual.

CARTON CONTENTS (Loose Parts)

- | | | |
|----------------------------|-----------------------------------|---------------------|
| 1. Tailgate Guides (2) | 5. Latch Stand Bracket | 9. Wheel Support |
| 2. Corner Caps (2) | 6. Tailgate Reinforcement Bracket | 10. Axle |
| 3. Latch Lock Sub-Assembly | 7. Tailgate | 11. Draw Bar Tongue |
| 4. Hitch Bracket | 8. Front Panel | 12. Cart Body (2) |
| | | 13. Wheels (2) |



CARTON CONTENTS

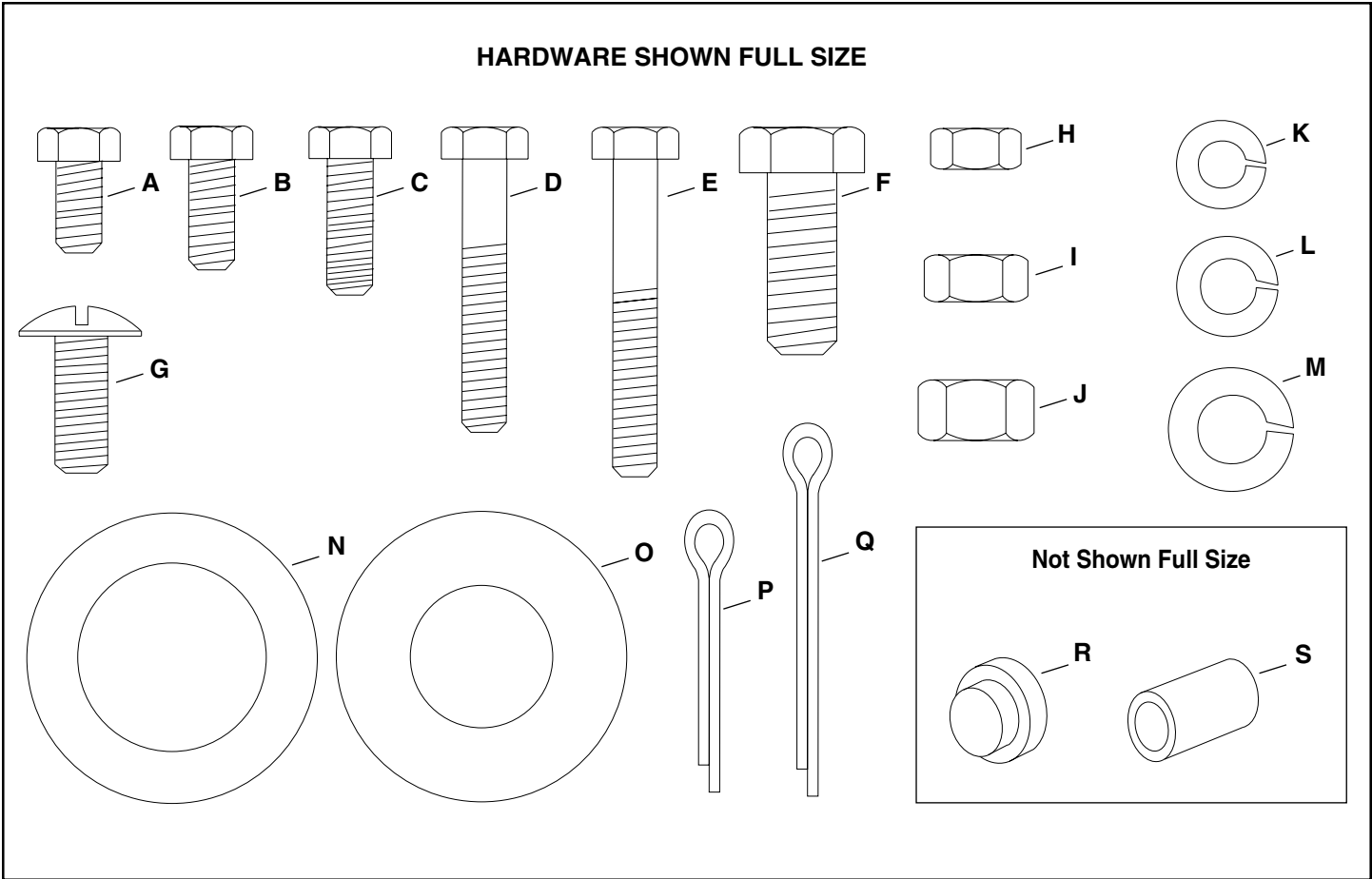


FIGURE 1 - HARDWARE PACK

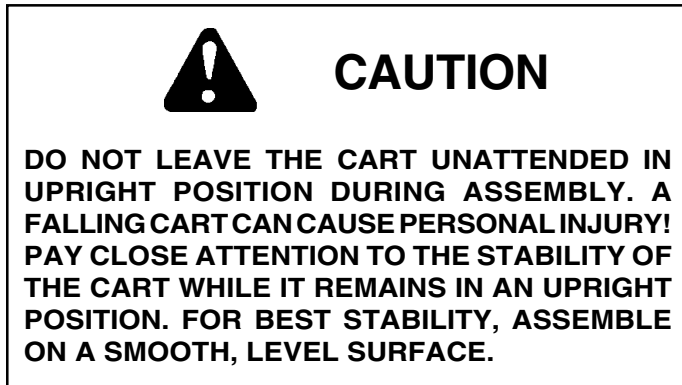
Ref.	Description	45-01011	45-01713	190-368B-100	45-02401	45-01841
		190-653A-100 190-653A-000				190-425A-100
A	Hex Bolt, 1/4" x 1/2"	23	23	23	23	25
B	Hex Bolt, 1/4" x 5/8"	6	6	6	6	6
C	Hex Bolt, 1/4" x 3/4"	6	6	6	6	6
D	Hex Bolt, 1/4" x 1-1/2"	2	0	0	0	0
E	Hex Bolt, 1/4" x 1-3/4"	0	2	2	2	2
F	Hex Bolt, 3/8" x 1"	2	2	2	2	2
G	Sl. Truss Hd. Bolt, 5/16" x 3/4" Lg.	14	14	14	14	14
H	Hex Nut, 1/4" Thread	37	37	37	37	39
I	Hex Nut 5/16" Thread	14	14	14	14	14
J	Hex nut, 3/8" Thread	2	2	2	2	2
K	Lock washer, 1/4"	37	37	37	37	39
L	Lock Washer 5/16"	14	14	14	14	14
M	Lock Washer, 3/8"	2	2	2	2	2
N	Flat Washer, 1"	0	4	4	4	4
O	Flat Washer, 3/4"	4	0	0	0	0
P	Cotter Pin, 1/8" x 1" Lg.	2	0	0	0	0
Q	Cotter Pin, 1/8" x 1-1/2" Lg.	0	2	2	2	2
R	Hub Cap	2	2	2	2	2
S	Spacer Tube, 2" Lg.	0	2	0	0	0

ASSEMBLY INSTRUCTIONS

TOOLS REQUIRED FOR ASSEMBLY

- (1) Screwdriver
- (1) Pliers
- (2) 7/16" Wrenches
- (1) 1/2" Wrench
- (2) 9/16" Wrenches

1. Remove the hardware pack and all loose parts from the carton. Be sure the carton is empty before discarding.
2. Lay out all the parts as shown in the carton contents.



3. Position cart body halves upright on a smooth level surface such as a garage floor or a paved driveway. See figure 2.
4. Assemble halves together using seven 1/4" x 1/2" hex bolts, 1/4" lock washers and 1/4" hex nuts as shown in figure 2. **Do not tighten at this time.**

Note: The 45-01841 and 190-425A-190 carts use nine bolts.

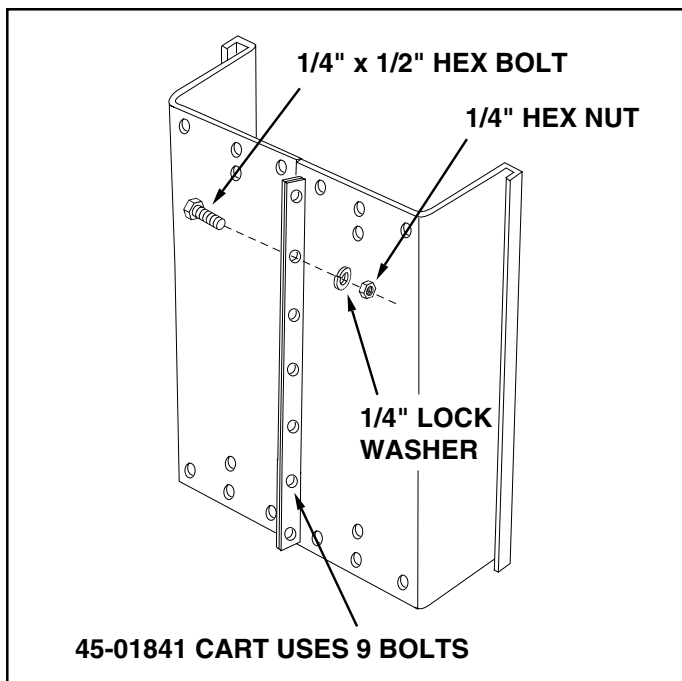


FIGURE 2

5. Position the tailgate reinforcement bracket on outside of cart as shown in figure 3. Assemble to the bottom of the cart body using six 5/16" x 3/4" slotted head screws, 5/16" lock washers and 5/16" hex nuts. **Do not tighten.** See figure 3.
6. Position the tailgate guides on the inside of the cart bodies with guide channels to the front as shown in figure 3. Assemble using six 1/4" x 3/4" hex bolts, 1/4" lock washers and 1/4" hex nuts. **Do not tighten.**

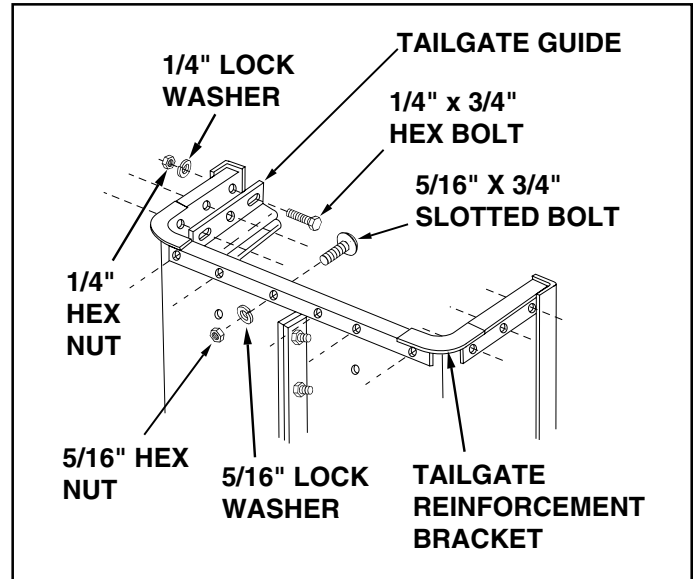


FIGURE 3

7. At this time, with the cart body halves pulled together, **tighten** the six slotted head screws assembled in step 5 and then the six hex bolts assembled in step 6. Leave loose for now the bolts that were assembled in step 4.
8. Carefully reverse the position of the cart so that it rests on the end with the just assembled tailgate reinforcement bracket, as shown in figure 4. Proceed with the assembly steps which follow.

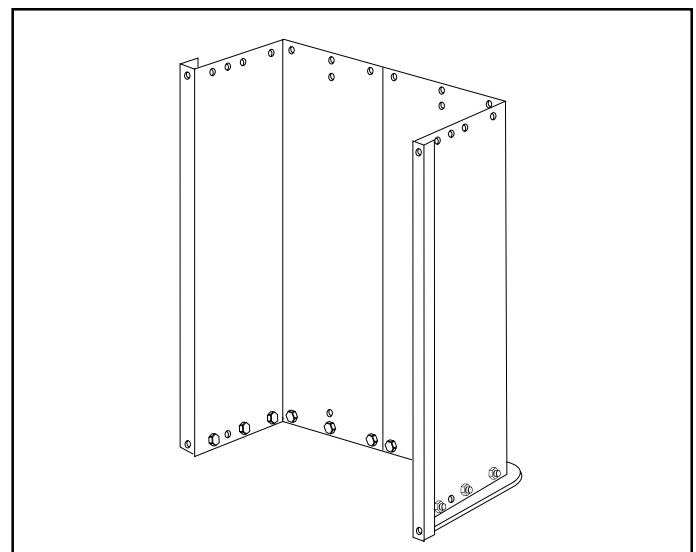


FIGURE 4

9. Assemble the front panel over the end of the cart using ten 1/4" x 1/2" hex bolts, 1/4" lock washers and 1/4" hex nuts as shown in figure 5. Leave two holes in the bottom of the panel empty as shown. With the cart body halves pulled together, **tighten** the bolts in the bottom of the front panel, then **tighten** the bolts in the sides. See figure 5.

At this time **tighten** the bolts assembled in step 4, which fasten the cart body halves together.

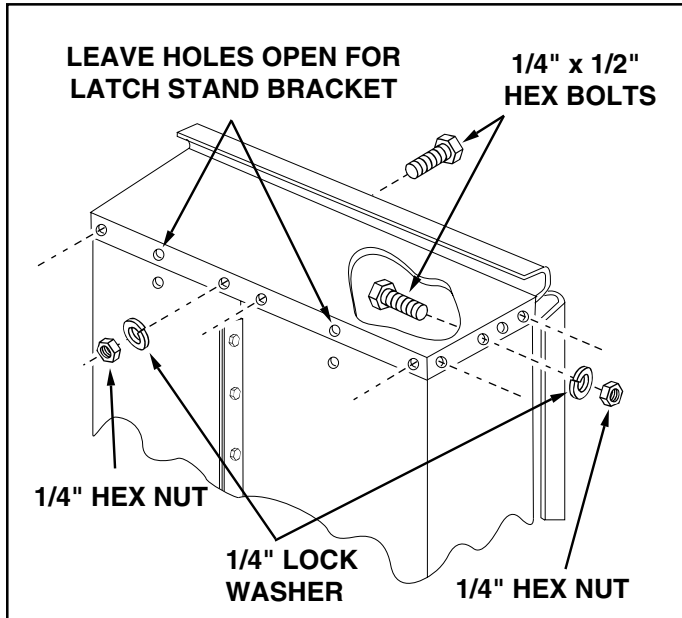


FIGURE 5

10. Assemble the wheel support to the cart using eight 5/16" x 3/4" slotted head screws, 5/16" lock washers and 5/16" hex nuts as shown in figure 6. Heads of screws go to the inside of cart. **Tighten**. Heads of screws go to the inside of cart. **Tighten**.

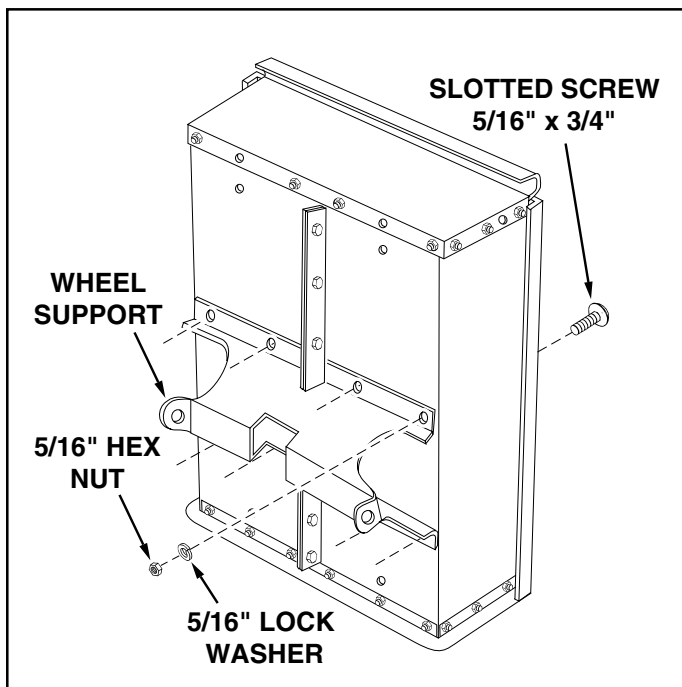


FIGURE 6

11. Assemble the latch stand bracket to the cart using four 1/4" x 5/8" hex bolts, 1/4" lock washers and 1/4" hex nuts. **TIGHTEN**. See figure 7.

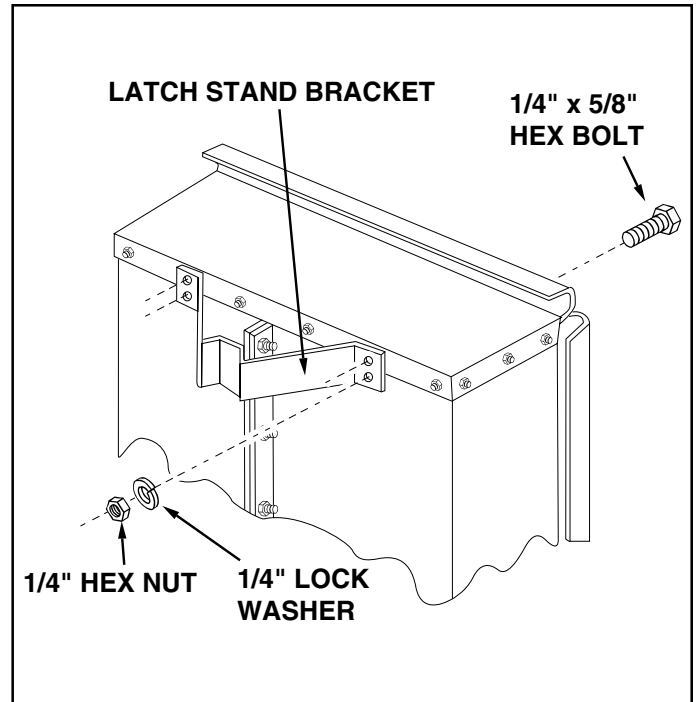


FIGURE 7

12. Assemble the two corner caps to the front corners of the cart using four 1/4" x 1/2" hex bolts, 1/4" lock washers and 1/4" hex nuts. Also assemble two 1/4" x 1/2" hex bolts, 1/4" lock washers and 1/4" hex nuts to the two rear corners of the cart. **TIGHTEN**. See figure 8.

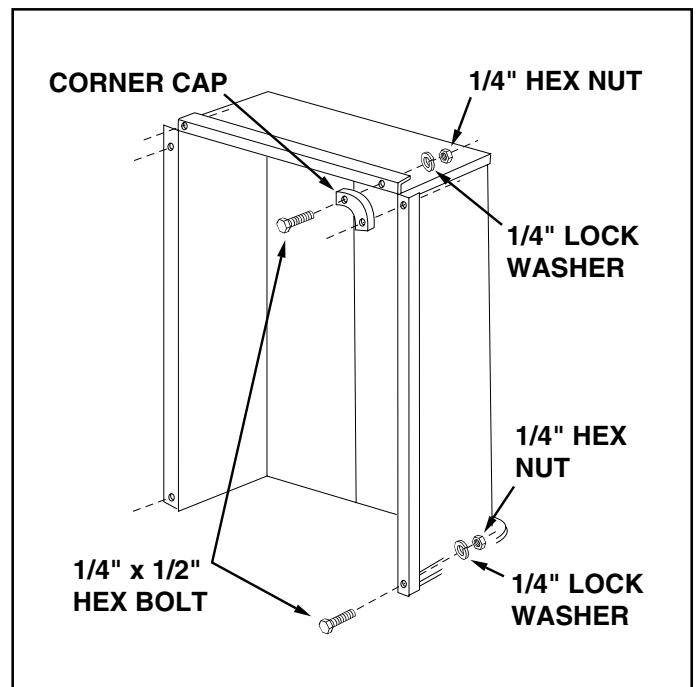


FIGURE 8

13. To prevent accidental tipping during the following assembly procedures, lower the cart to rest upside down on its top flanges, so that the wheel support is facing up. See figure 11.
14. Assemble the latch lock subassembly to the drawbar tongue using two 1/4" x 5/8" hex bolts, 1/4" lock washers and 1/4" hex nuts. **Tighten.** See figure 9.

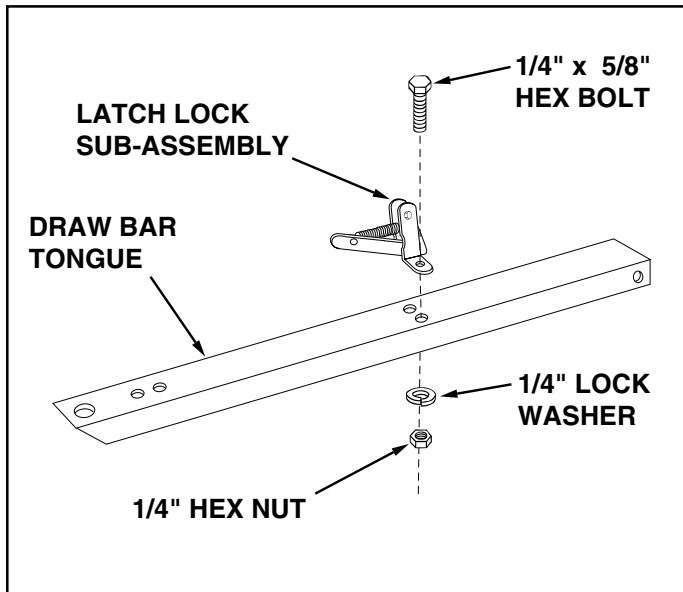


FIGURE 9

15. Assemble the hitch bracket to the drawbar tongue, using two 3/8" x 1" hex bolts, 3/8" lock washers and 3/8" hex nuts. **Tighten.** See figure 10.

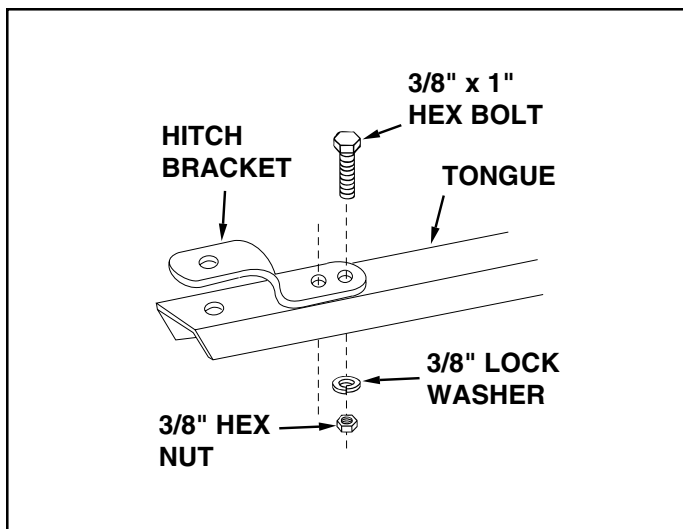


FIGURE 10

16. Assemble the axle and drawbar tongue to the wheel support, with the open side of tongue facing up, away from the cart. Make sure the latch lock snaps over the top of the latch stand bracket. Fasten the axle to the wheel support using two 1/4" x 1-3/4" hex bolts, lock washers and hex nuts. **Tighten.** See figure 11.

NOTE: The 45-01011, 190-653A-000, 190-653A-100 and 190-653A-190 carts use 1/4" x 1-1/2" hex bolts instead of 1/4" x 1-3/4" hex bolts.

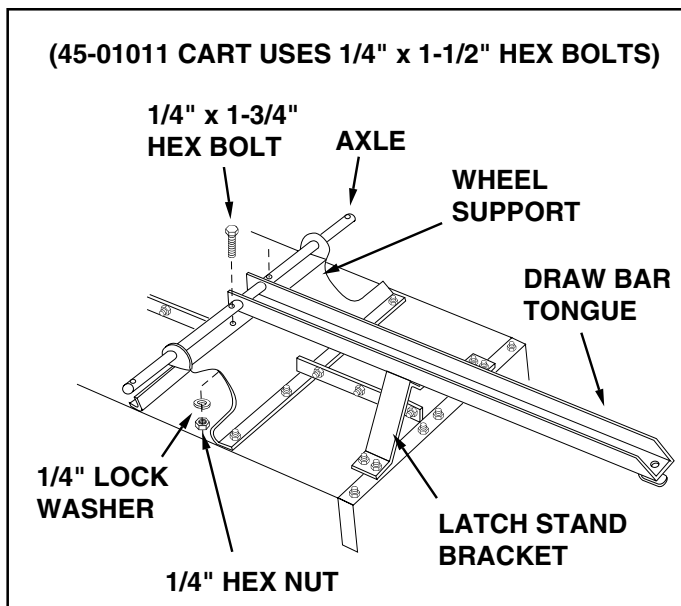


FIGURE 11

17. Assemble a spacer tube (45-01713 cart only), a flat washer, a wheel with the valve stem facing out, and another flat washer onto the axle as shown in figure 12. Secure with a cotter pin and spread the ends so that a hub cap can fit over the cotter pin. Assemble the hub cap by pressing it onto the flat washer. Repeat on other end of axle.

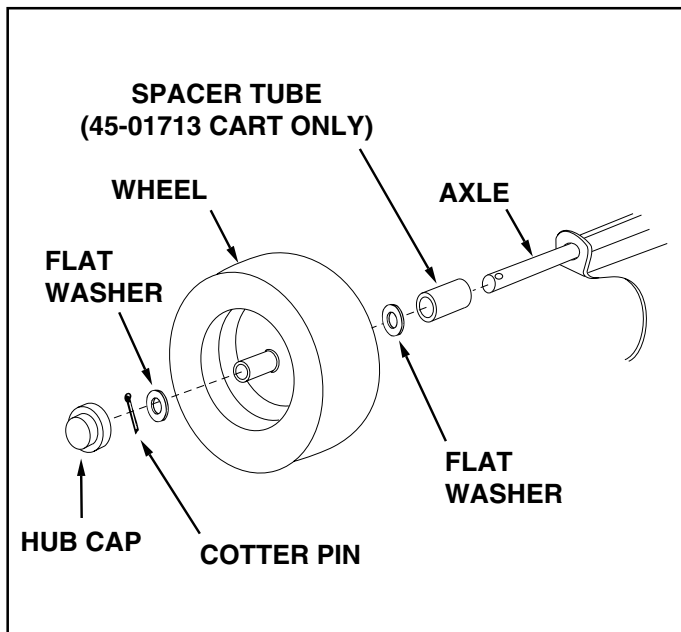


FIGURE 12

18. Turn cart over so that it rests right side up on its wheels.
19. Place the tailgate down into the tailgate guides so that the holes in the bottom lip of tailgate fit over the slotted head screws in the bottom of the cart. This completes the assembly of your cart.

OPERATION



CAUTION: VEHICLE BRAKING AND STABILITY MAY BE AFFECTED WITH THE ADDITION OF AN ACCESSORY OR AN ATTACHMENT. BE AWARE OF CHANGING CONDITIONS ON SLOPES.

1. Refer to the vehicle owners manual for instructions on safe operation on slopes.
2. Use the slope guide provided on page 11 of this manual to determine if slope angle is not too steep for safe operation.
3. For best handling and traction, distribute the weight of the load evenly in the cart.
4. Always test to make sure your tractor has adequate towing and braking capabilities whenever hauling a substantial amount of weight in your cart. Use extra caution when operating on slopes.

NOTE

DO NOT EXCEED WEIGHT CAPACITY OF CART

(See the specifications on this page for each model)
One cubic foot of dirt weighs approximately 150 lbs.

5. To dump material from the cart, remove the tailgate by lifting it straight up and out from between the guides. Release the spring latch on the tongue by pulling the latch lock handle forward, away from the cart. The cart bed will then tilt backwards to empty its contents. After emptying, pull the front of the bed down toward the cart tongue until the latch snaps into place. Replace the tailgate if desired.
6. The maximum towing speed for this cart is 10 m.p.h.



CAUTION: TO AVOID POSSIBLE INJURY, BEFORE RELEASING THE LATCH BE SURE THAT NO ONE IS NEAR THE CART.

MAINTENANCE

1. At the beginning of each season, lubricate, with a light machine oil, the latch, the latch pivot bolt, and the area of the axle where the draw bar tongue pivots .
2. Grease or oil the wheel bearings periodically. Use automotive wheel bearing type grease or 20 weight oil.
3. Keep tires filled to the recommended tire pressure of 12-14 Lbs.

CART MODEL SPECIFICATIONS

MODELS 45-01011, 190-653A-000, 190-653A-100 & 190-653A-190 10 Cu. Ft. (Std.)

Tires: 16.00" x 4.0" Pneumatic
Axle: 3/4" Dia. Steel
Capacity: Up to 750 Lbs. Max.
Approx. Sh. Wt. 105 Lbs.

MODEL 45-01713 10 Cu. Ft. (H.D.)

Tires: 15.00" x 6.0" Pneumatic, Turf Tread
Axle: 1.0" Dia. Steel
Capacity: Up to 1000 Lbs. Max.
Approx. Sh. Wt. 127 Lbs.

MODEL 190-368B-100 10 Cu. Ft. (H.D.)

Tires: 16.00" x 6.5" Pneumatic, Turf Tread
Axle: 1.0" Dia. Steel
Capacity: Up to 1000 Lbs. Max.
Approx. Sh. Wt. 127 Lbs.

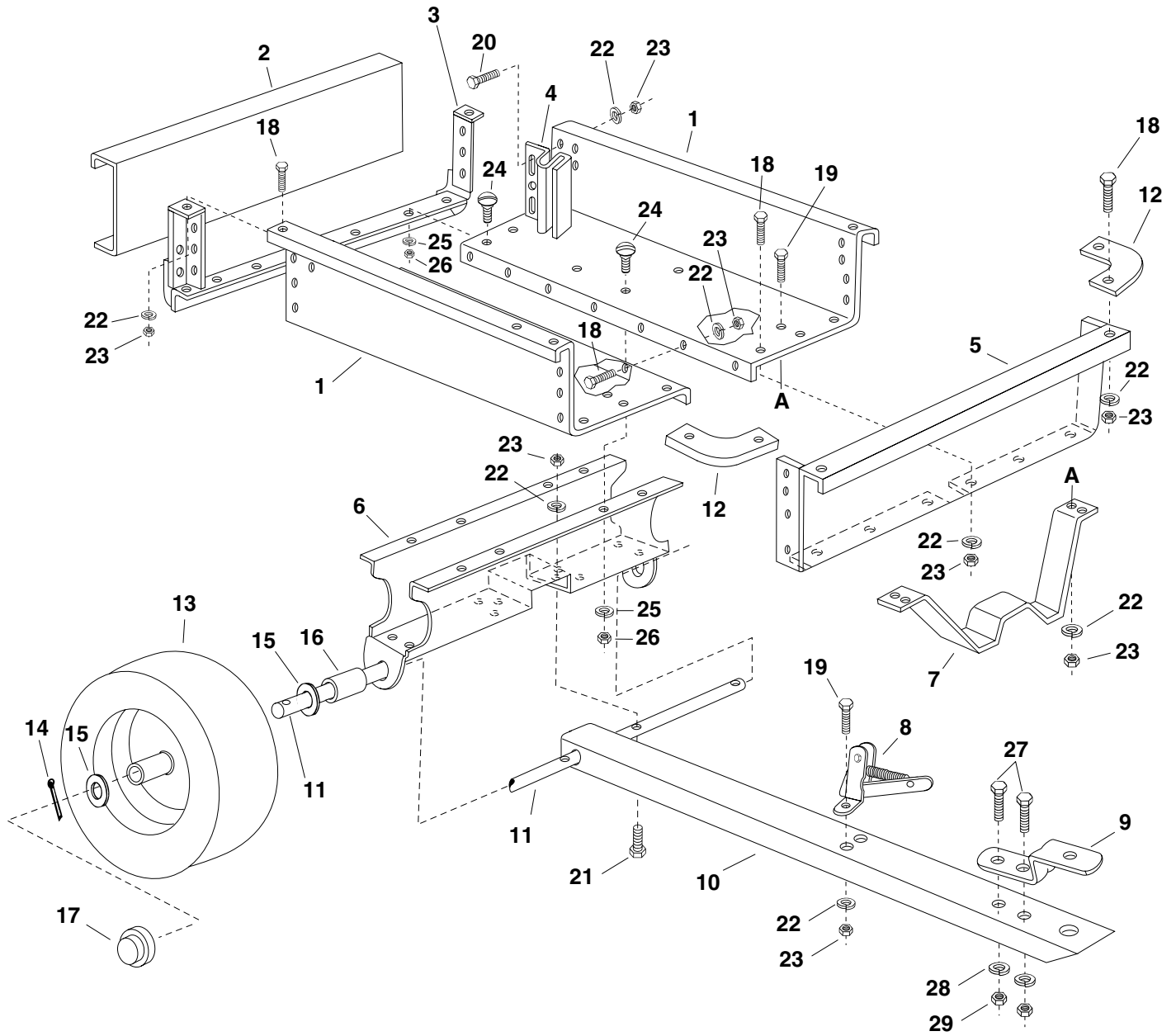
MODEL 45-02401 - 15 Cu. Ft. (H.D.)

Tires: 16.00" x 6.5" Pneumatic, Turf Tread
Axle: 1.0" Dia. Steel
Capacity: Up to 1200 Lbs. Max.
Approx. Sh. Wt. 157 Lbs.

MODELS 45-01841, 190-425A-100 & 190-425A-190 17 Cu. Ft. (H.D.)

Tires: 16.00" x 6.5" Pneumatic, Turf Tread
Axle: 1.0" Dia. Steel
Capacity: Up to 1500 Lbs. Max.
Approx. Sh. Wt. 180 Lbs.

REPAIR PARTS FOR UTILITY CARTS



REPAIR PARTS LIST FOR UTILITY CARTS

REF. NO.	PART NO.	DESCRIPTION	45-01011	190-368B-100	45-01713	45-02401	45-01841
			190-653A-000 190-653A-100 190-653A-190				190-425A-100 190-425A-190
1	23985	Cart Body	2	2	2	----	----
	24096	Cart Body	----	----	----	2	----
	23984	Cart Body	----	----	----	----	2
2	23502	Tailgate	1	1	1	----	----
	23504	Tailgate	----	----	----	1	1
3	62458	Tailgate Reinforcement Bracket	1	1	1	----	----
	62457	Tailgate Reinforcement Bracket	----	----	----	1	1
4	23548	Guide, Tailgate	2	2	2	2	2
5	23492	Front Panel	1	1	1	----	----
	23490	Front Panel	----	----	----	1	1
6	23506	Wheel Support	1	----	----	----	----
	23507	Wheel Support	----	1	1	----	----
	23487	Wheel Support	----	----	----	1	1
7	23297	Latch Stand Bracket	1	1	1	1	1
8	62455	Ass'y, Latch Lock	1	1	1	1	1
9	23014	Hitch Bracket	1	1	1	1	1
10	23986	Draw Bar Tongue	1	----	----	----	----
	23988	Draw Bar Tongue	----	1	1	1	----
	23989	Draw Bar Tongue	----	----	----	----	1
11	23026	Axle, Wheel 3/4" Dia.	1	----	----	----	----
	23299	Axle, Wheel 1" Dia.	----	1	----	----	----
	23488	Axle, Wheel 1" Dia.	----	----	1	1	1
12	23484	Cap, Front Corner	2	2	2	2	2
13	43008	Wheel, 16/4.00 x 8.00	2	----	----	----	----
	46272	Wheel, 15/6.00 x 8.00	----	----	2	----	----
	43594	Wheel, 16/6.5" x 8.00	----	2	----	2	2
14	43010	Cotter Pin, 1/8" Dia. x 1"	2	----	----	----	----
	43093	Cotter Pin, 1/8" Dia. x 1-1/2"	----	2	2	2	2
15	43009	Washer, Flat 3/4"	4	----	----	----	----
	43601	Washer, Flat 1"	----	4	4	4	4
16	44678	Spacer Tube, 1-1/4" O.D. x 2" Lg.	----	----	2	----	----
17	43014	Hub Cap	2	2	2	2	2
18	43175	Hex Bolt, 1/4-20 x 1/2" *	23	23	23	23	25
19	43866	Hex Bolt, 1/4-20 x 5/8" *	6	6	6	6	6
20	43012	Hex Bolt, 1/4-20 x 3/4" *	6	6	6	6	6
21	43648	Hex Bolt, 1/4-20 x 1-1/2" *	2	----	----	----	----
	1509-69	Hex Bolt, 1/4-20 x 1-3/4" *	----	2	2	2	2
22	43177	Lock washer, 1/4" *	37	37	37	37	39
23	43178	Hex Nut, 1/4-20 Thread *	37	37	37	37	39
24	43814	Sl. Truss Hd. Bolt, 5/16-18 x 3/4" Lg. *	14	14	14	14	14
25	43086	Lock Washer, 5/16" *	14	14	14	14	14
26	43083	Hex Nut, 5/16-18 Thread *	14	14	14	14	14
27	43001	Hex Bolt, 3/8-16 x 1" Lg. *	2	2	2	2	2
28	43003	Lock Washer, 3/8" *	2	2	2	2	2
29	43015	Hex nut, 3/8-16 Thread *	2	2	2	2	2
	46476	Owner's Manual	1	1	1	1	1

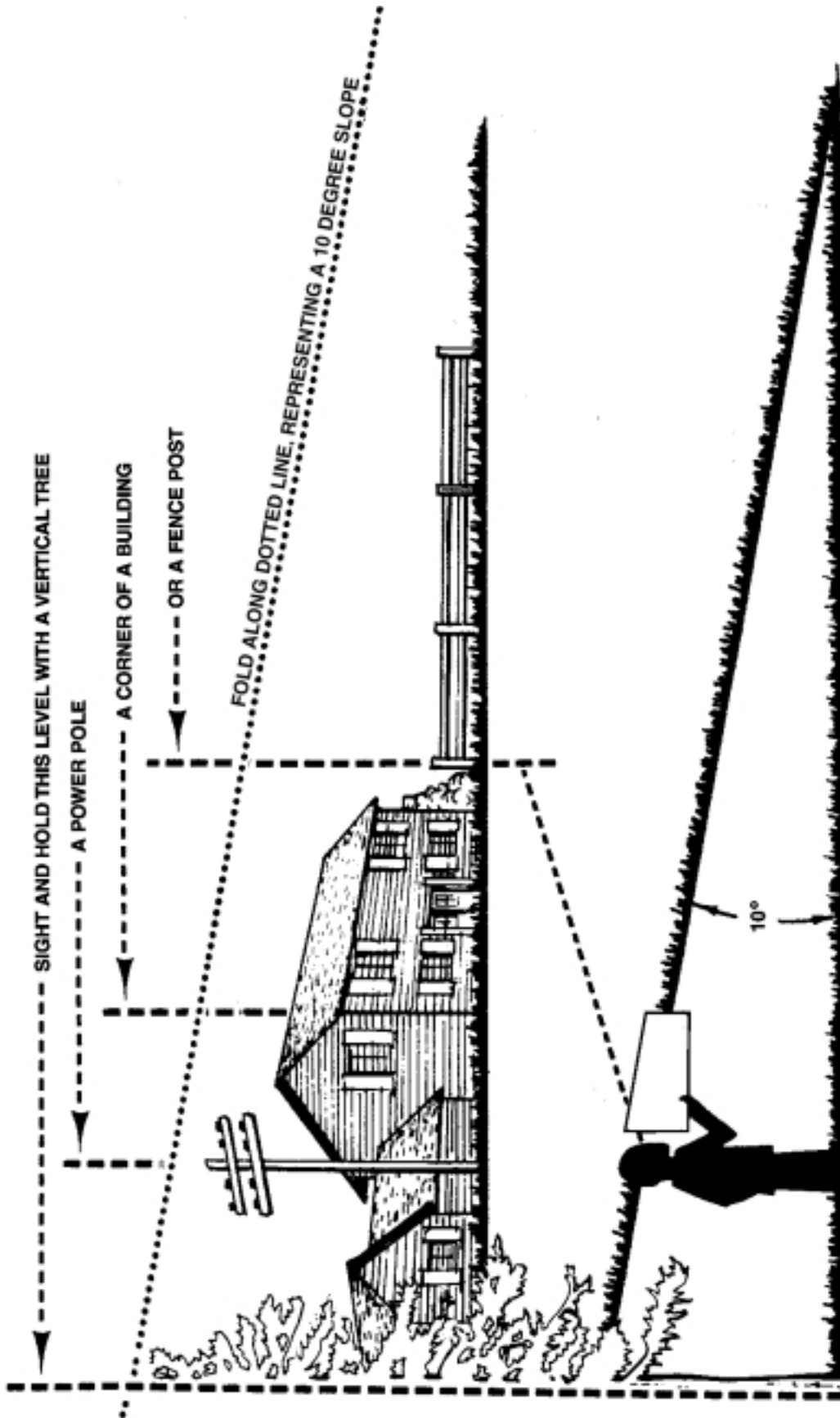
* Purchase Common Hardware Locally

NOTES

SLOPE GUIDE

(Keep this sheet in a safe place for future reference.)

Use this guide to determine if a slope is safe for the operation of your tractor and cart. Refer also to the instructions in your vehicle owners manual.



CAUTION: DO NOT OPERATE YOUR TRACTOR AND CART ON A SLOPE IN EXCESS OF 10 DEGREES. BE SURE OF YOUR TRACTOR'S TOWING AND BRAKING CAPABILITIES BEFORE OPERATING ON A SLOPE. AVOID ANY SUDDEN TURNS OR MANEUVERS WHILE ON A SLOPE.



REPAIR PARTS
303 West Raymond
Sullivan, IL. 61951
217-728-8388