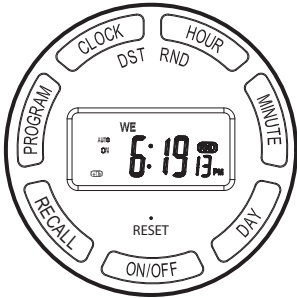


USE AND CARE GUIDE

INDOOR DIGITAL TIMER



Questions, problems, missing parts? Before returning to the store, call Defiant Customer Service
8 a.m. - 6 p.m., EST, Monday - Friday
1-866-308-3976
HomeDepot.com

THANK YOU

We appreciate the trust and confidence you have placed in Defiant through the purchase of this indoor digital timer. Visit us online to see our full line of products available for your home improvement needs. Thank you for choosing Defiant!

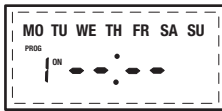
Operating Instructions (Continued)

2 Programming ON/OFF Times



NOTE: While programming, if no button is pushed for 10 seconds, the timer will return to the clock display.

- ☐ Press PROGRAM (2) once to begin programming. The screen will show 1 ON --- and all days of the week.
- ☐ Press DAY (6) to select the days of the week the timer will operate:
 - ☐ MO TU WE TH FR SA SU
 - ☐ MO>TU>WE>TH>FR>SA>SU> (to select single days only)
 - ☐ MO TU WE TH FR
 - ☐ SA SU
 - ☐ MO TU WE TH FR SA
 - ☐ MO WE FR
 - ☐ TU TH SA
 - ☐ MO TU WE
 - ☐ TH FR SA
- ☐ Press HOUR (4) to select the hour the timer will activate. Note the AM/PM in the bottom right corner of the display.
- ☐ Press MINUTE (5) to select the minute the timer will activate.
- ☐ Press PROGRAM (2) once more. The screen will show 1 OFF --- and all days of the week. Repeat the previous steps to program the times for the timer to turn OFF for program 1.
- ☐ Press PROGRAM (2) once to move to Program 2 (2 ON ---). Repeat the previous steps to program the ON/ OFF times for Program 2, if you want to program additional ON/OFF times.
- ☐ Once programming is complete, press CLOCK (1) to return to Clock mode.



NOTE: Press CLOCK (1) at any time to finish programming and return to Clock mode. The timer can run up to 20 programs simultaneously.

Safety Information

FCC NOTE

This device complies with part 15 of the FCC rules. Operation is subject to the following two conditions: (1) this device may not cause harmful interference, and (2) this device must accept any interference received, including interference that may cause undesired operation.

The manufacturer is not responsible for any radio or TV interference caused by unauthorized modifications to this equipment. Such modifications could void the user's authority to operate the equipment.

This equipment has been tested and found to comply with the limits for a Class B digital device, pursuant to Part 15 of the FCC Rules. This Class B digital apparatus complies with Canadian ICES-003. These limits are designed to provide reasonable protection against harmful interference in a residential installation. This equipment generates, uses, and can radiate radio frequency energy and, if not installed and used in accordance with the instructions may cause harmful interference to radio communications. However, there is no guarantee that interference will not occur in a particular installation. If this equipment does cause harmful interference to radio or television reception, which can be determined by turning the equipment off and on, the user is encouraged to try to correct the interference by one or more of the following measures:

- ☐ Reorient or relocate the receiving antenna.
- ☐ Increase the separation between the equipment and receiver.
- ☐ Connect the equipment into an outlet on a circuit different from that to which the receiver is connected.
- ☐ Consult the dealer or an experienced radio/TV technician for help.

**WARNING: RISK OF ELECTRIC SHOCK:**

- ☐ Plug directly into an electrical outlet
- ☐ Do not use in wet locations
- ☐ Use indoors only
- ☐ Unplug timer before cleaning
- ☐ Keep children away

**WARNING: RISK OF ELECTRIC FIRE:**

- ☐ Do not use to control appliances that contain heating elements such as cooking appliances, heaters, and irons
- ☐ Do not exceed electrical ratings
- ☐ Do not use with extension cords

RATINGS

125 VAC, 60Hz

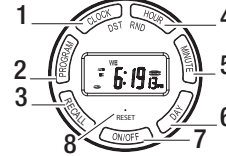
15 A General Purpose / Resistive

1250 W (10A) Tungsten

½ HP

Product Description

Timer display shown in standard Clock mode:



1. **CLOCK (DST):** Hold and press HOUR, MINUTE, or DAY buttons to set time of day. In Clock mode, hold for 5 seconds to move forward or back an hour (Daylight Savings Adjust).
2. **PROGRAM:** Press to enter timer Programming mode.
3. **RECALL:** In Programming mode, press to cancel or restore ON/OFF time shown.
4. **HOUR (RND):** While holding CLOCK button, press to set hour (time). While in Programming mode, press to set hour for ON/OFF times. While in Clock mode, press and hold 3 seconds to activate random security feature.
5. **MINUTE:** While holding CLOCK button, press to set minute (time). While in Programming mode, press to set minute for ON/OFF times.
6. **DAY:** While holding CLOCK button, press to set day of the week. While in Programming mode, press to scroll through options for days of the week.
7. **ON/ OFF:** (push to scroll) ON=Always ON, Auto=Timer is active, OFF=Always OFF
8. **RESET:** Press and hold to reset all the programs permanently.

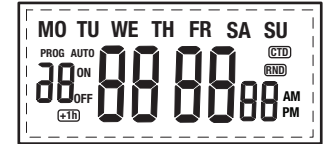
Operating Instructions

1 Setting up the timer for the first time

If the LCD screen is displaying numbers, you are ready to program and can proceed with these steps. If the screen is blank, plug in the timer and leave for two hours to charge the internal battery before programming.

- ☐ Use a toothpick or sharp pencil to push the RESET (8) button. The screen will go blank briefly and then display 12:00 AM.
- ☐ Press and hold CLOCK (1) throughout the time and day setting process.
- ☐ Press HOUR (4) to adjust the hour. Take note of the AM/PM on the bottom right of the display.
- ☐ Press MINUTE (5) to adjust the minute.
- ☐ Press DAY (6) to adjust the day.
- ☐ You can now release the CLOCK button.

LCD display



Ready to set



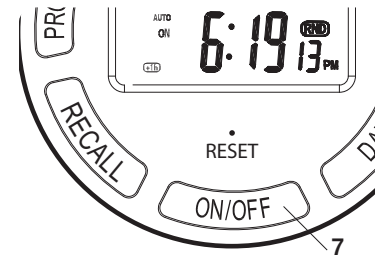
4 Using the ON/OFF functions

There are four settings for the timer; press the ON/ OFF button (7) to select the desired option:

- ☐ ON – Timer outlet is always ON (Overrides Programming).
- ☐ AUTO ON – Timer outlet is currently ON and will turn OFF at next programmed OFF time.
- ☐ OFF – Timer outlet is always OFF (Overrides Programming).
- ☐ AUTO OFF – Timer outlet is currently OFF and will turn on at the next programmed ON time.



NOTE: The timer program will control the device if set to AUTO ON or AUTO OFF.



5 Using the Random Security (RND) and Daylight Savings Time (DST) features

The Random Security program option will turn lights ON and OFF using the programmed times + or - 30 minutes, giving the home a more lived in appearance while occupant is away.

- ☐ Press HOUR (RND) (4) for 5 seconds to activate the random feature. The display will show the RND icon above the seconds on the display.
- ☐ Press HOUR (RND) (4) for 5 seconds to deactivate the random feature. The display will not show the RND icon.

To use the Daylight Savings Time easy adjust feature, push CLOCK (1) for 5 seconds to advance the current time 1 hour (+1h icon should appear on the lower left corner of the display). Repeating this process will decrease the time by 1 hour (the +1h icon will disappear).

DEFIANT®

Questions, problems, missing parts? Before returning to the store, call Defiant Customer Service
8 a.m. - 6 p.m., EST, Monday - Friday

1-866-308-3976

HOMEDEPOT.COM