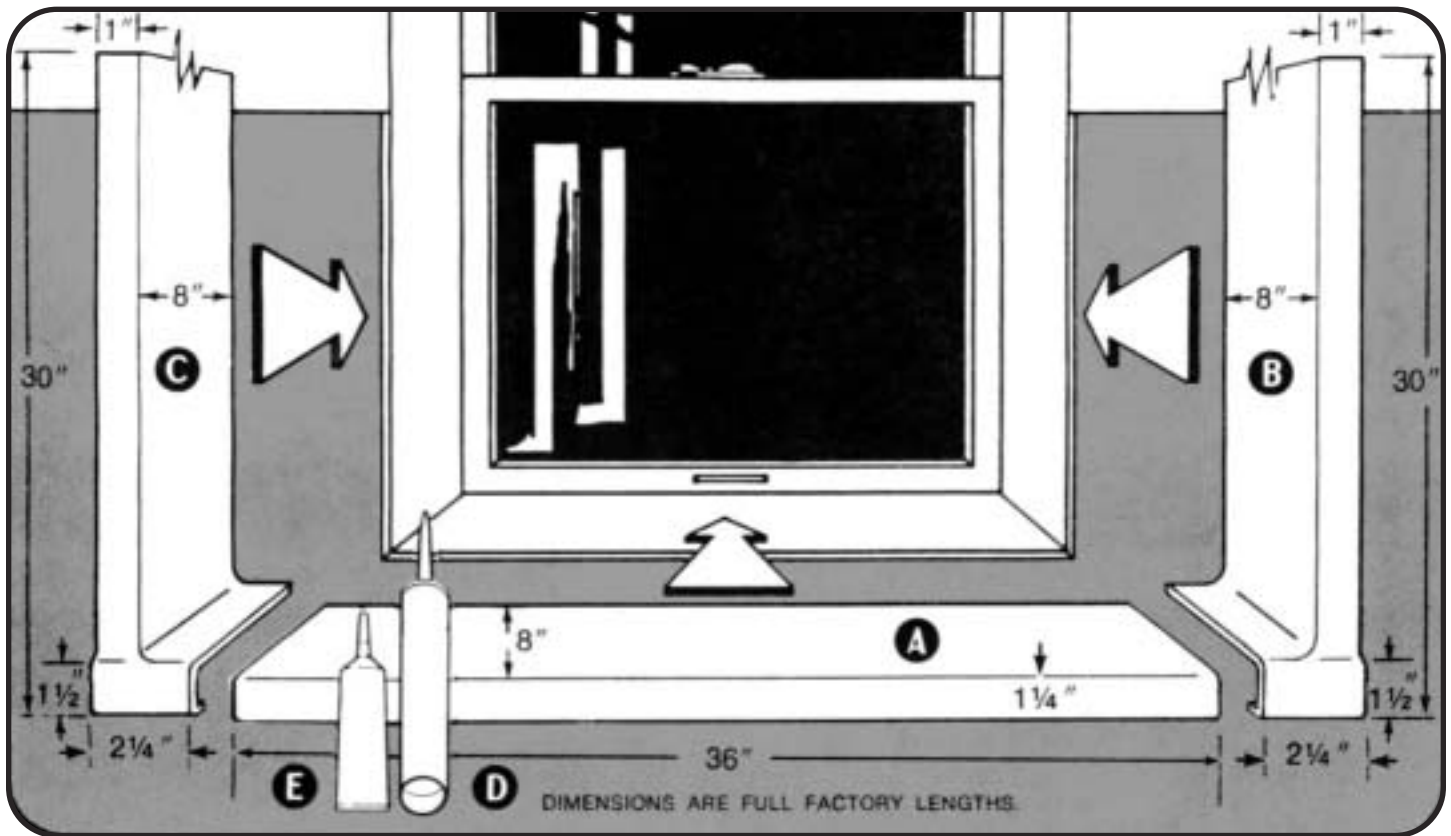


Installation procedure for
FIBERGLASS WINDOW TRIM KIT WTK-1/BC-8100



Pat. No. 4,391,072

CAUTION: Read ALL instructions BEFORE starting your installation. Save this manual for future reference.

INCLUDED IN THE CARTON:

- A** Sill panel
- B** Right jamb panel
- C** Left jamb panel
- D** One tube of adhesive
- E** One tube of white caulk
- Installation instructions

TOOLS REQUIRED TO INSTALL

The only tools needed are a saber saw, ruler and caulking.

DO NOT NAIL PANELS TO SILLS. THE HOLES IN THE PANELS ARE FOR MANUFACTURING PURPOSES ONLY!

INSTALLATION PROCEDURE

Allow panels to adjust to room temperature for at least 6 hours (65°–90°F).

Remove unnecessary window moldings, if any, and clean area of dirt, chipped paint, loose plaster, etc.



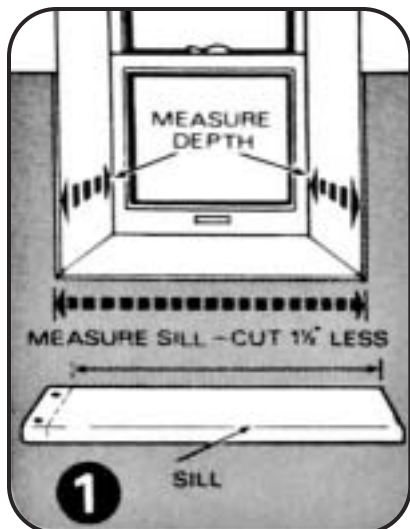
IMPORTANT — Adhesive Venting Instructions

The adhesive manufacturer recommends the following procedure be used to prevent the possibility of adhesive bleed through when attaching to a non-porous surface, such as ceramic tile or vinyl coated dry wall:

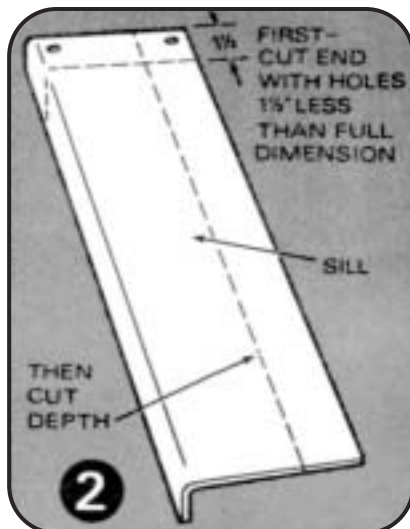
After adhesive is applied to panel as instructed, DO NOT remove backing from tape. Position panel as instructed and press firmly against the wall. Pull panel away from the wall and allow the adhesive to dry for three (3) minutes. Remove backing from tape and then press panel into final position.

INSTALLATION PROCEDURE

1. MEASURE BEFORE YOU START!
Measure width of sill opening, mark, and cut 1-1/2" LESS than the measurement. (Cut off the end with the holes used for manufacturing purposes.)

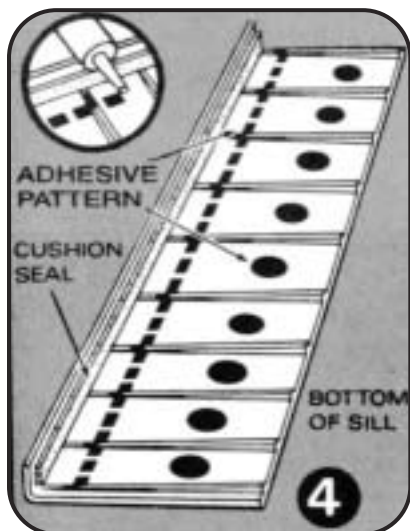
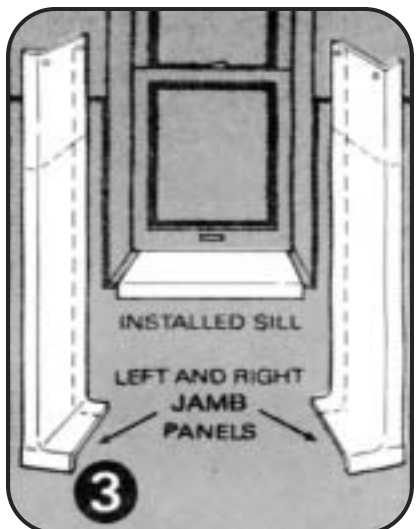


2. Measure depth of sill area. Mark and cut panel to exact size.

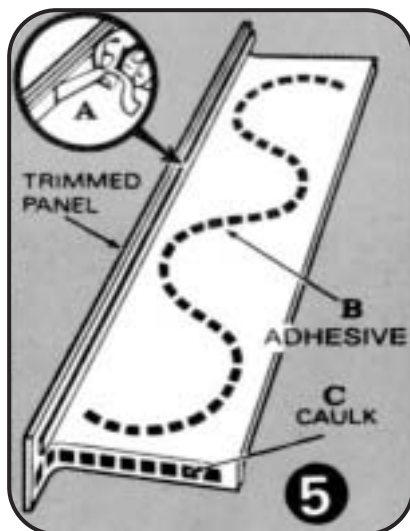


3. Cut left and right vertical panels to desired height and depth. (Lining up with height of tub surround material if applicable.)

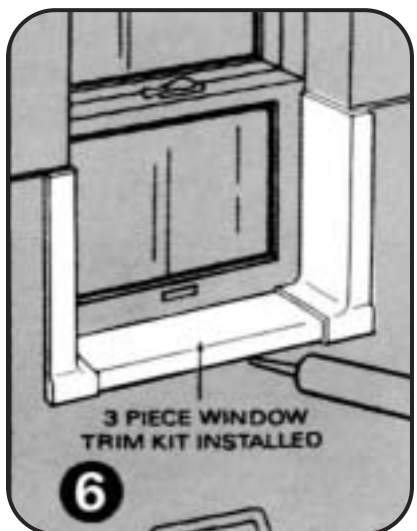
NOTE: AT THIS POINT, IT IS ADVISABLE TO TRIAL FIT ALL 3 PANELS.



4. Apply adhesive to underside of sill. Cushion-seal foam strip is factory applied and provides a good seal for uneven edges. Be sure to center sill panel 3/4" away from each side wall. Vertical jamb panel will cover the gap. After positioning, follow "adhesive venting instructions" then final fit by pressing firmly into place.



5. With vertical jamb panels cut to size, apply adhesive per "S" pattern shown above. After following "adhesive venting instructions," remove backing from tape and apply a bead of white caulk to end of panel that overlaps sill. Place into position and press down so tape and adhesive make good contact to wall.



6. Caulk cut edges where necessary to seal out moisture. It is not necessary to caulk overlapping finished edges, unless desired.

Pat. No. 4,391,072

CAUTION: Dry cleaning agents and solvents will damage the surface. Burning cigarettes will damage and discolor the surface. Please allow unit to be installed 24 hours before using. This will allow proper curing of adhesive and caulking material.

CARE AND CLEANING:

Wash regularly with warm water, use soft cloth with mild detergent such as Fantastic, Mr. Clean or Lestoil.

Scouring pads made of nylon, saran or polyethylene may be used, but NEVER USE ABRASIVE SCOURING POWDERS, CLEANSERS OR PADS...THEY WILL DULL THE FINISH.

Protect finish with any fiberglass wax or automotive paste wax.