

Please carefully read and save these instructions before attempting to assemble, maintain, install, or operate this product. Observe all safety information to protect yourself and others. Failure to observe the instructions may result in property damage and/or personal injury. Please keep instructions for future reference.

Important Operating Instructions



18 GAUGE 1/4 INCH NARROW CROWN STAPLER

**Model: 9387
7611**

CALIFORNIA PROPOSITION 65

WARNING: You can create dust when you cut, sand, drill or grind materials such as wood, paint, metal, concrete, cement, or other masonry. This dust often contains chemicals known to cause cancer, birth defects, or other reproductive harm. Wear protective gear.

WARNING: This product or its power cord may contain chemicals, including lead, known to the State of California to cause cancer and birth defects or other reproductive harm. Wash hands after handling.

Important!

When using equipment, a few safety precautions must be observed to avoid injuries and damage. Please read the complete operating manual with due care. Keep this manual in a safe place, so that the information is available at all times. If you give the equipment to any other person, give them these operating instructions as well. We accept no liability for damage or

accidents which arise due to non-observance of these instructions and the safety information herein.

SPECIFICATIONS

Operation Pressure: 60-100PSI

Magazine Capacity: 100 pieces

Fastener Length: 1/2 – 1-1/4 inch

CAUTION:

FOR YOUR OWN SAFETY READ INSTRUCTION MANUAL COMPLETELY AND CAREFULLY BEFORE OPERATING THIS NARROW CROWN STAPLER.

Any failures made in following the safety regulations and instructions may result in an electric shock, fire and/or serious injury.

SAFETY INSTRUCTIONS

- 1) Read and understand tool labels and the manual. Failure to follow warnings, dangers, and precautions could result in death or serious injury.
- 2) Use safety equipment that conforms to local regulations, such as safety glasses with side shields and ear protection.
- 3) Only use compressed air. Use of any air other than compressed air may cause the tool to explode, which will cause death or serious personal injury.
- 4) Use clean, dry, regulated, compressed air at 60-100psi. Do not use pressure which could exceed 110psi.
- 5) Keep the generator away from all flammable liquids and gases.
- 6) Stay alert while operating the tool. Do not use while under the influence of drugs or alcohol.

For warranty purchases, please keep your dated proof of purchase. File or attach to the manual for safekeeping.

7) Do not overreach when using this tool. Keep proper footing and balance at all times.

8) Check the tool carefully before each use. Do not use if problems are found.

9) Do not attempt to modify or tamper with the tool in any way.

10) Disconnect the tool from the air compressor and power source before making any adjustments, changing the accessories or storing the tool.

11) Do not load fasteners with the air line connected or with trigger or Work Contact Element (WCE) depressed.

12) Always fit tool with a fitting or hose coupling on, or near, the tool in such a manner that all compressed air in the tool is discharged at the time the fitting or hose coupling is disconnected.

13) Never place hands or any other body parts in the fastener discharge area of the tool.

14) Carry the tool by the handle. Do not carry by the air hose or with the trigger depressed.

15) Do not drive a fastener on top of other fasteners.

16) Do not operate if any warnings or warning labels are not legible.

17) Maintain tools with care. Check for misalignment or

binding of moving parts and for any other condition that may affect the tool's operation.

18) Always assume the tool contains fasteners. Do not point the tool towards yourself or anyone whether it contains fasteners or not.

19) Always keep others at a safe distance from the work area.

20) Avoid long periods of handling the tool. Stop using the tool if you feel pain or stiffness in hands or arms.

21) Always disconnect the air supply before inspecting the tool.

22) Avoid using the tool when the magazine is empty. Accelerated wear on the tool may occur.

23) Clean and check oil air supply hoses and fittings before connecting the tool to air supply. Replace any damaged or worn hoses or fittings.

OPERATING THE TOOL

CAUTION: Keep fingers away from trigger when not driving fasteners to avoid accidental firing.

RECOMMENDED HOOKUP

The air compressor must be able to maintain a minimum of 60psi when the tool is being used.

An oiler and a filter can help aid the performance of the tool.

Use 3/8 in (10mm) air hoses with a max working pressure of 110psi for 50 ft run or longer. For better performance, install a quick plug with an inside diameter of 5/16 in (8mm) on the tool and a quick coupler on the air hose.

Use a pressure regulator on the compressor with an operating pressure of 60-110psi. A pressure regulator is required to control the operating pressure of the tool between 60 and 100psi.

LOADING THE TOOL

WARNING: Disconnect tool from air hose before loading.

1) Depress the magazine latch. Pull back on the magazine cover.

2) Insert a stick of fasteners into the magazine. Make sure the fasteners are loaded with the points downward. Make sure the fasteners are not dirty or damaged.

3) Push the magazine cover forward until the latch catches.

LUBRICATION

The tool requires lubrication before using the tool for the first time and before each use. If an inline oiler is used, manual lubrication through air

inlet is not required on a daily basis.

NOTICE: Failure to lubricate the tool properly will dramatically shorten the life of the tool and void the warranty.

- 1) Disconnect the air supply from the tool to add lubricant.
- 2) Turn the tool so the air inlet is facing up. Place 4-5 drops of 30W non-detergent oil into air inlet. Do not use detergent oil, oil additives or air tool oil. Air tool oil contains solvents which will damage the tool's internal components.
- 3) After adding oil, run tool briefly. Clean off any excess oil from the cap exhaust.

CHECKING THE WORK CONTACT ELEMENT (WCE)

NOTICE: Check the operation of the WCE trip mechanism before each use. The WCE must move freely without binding through its travel distance. The WCE spring must return the WCE to its fully extended position after being depressed. Do not operate the tool if the WCE trip mechanism is not operating properly.

- 1) Disconnect the air supply from the tool.
- 2) Remove all fasteners from the magazine.

3) Make sure the trigger and WCE move freely up and down without sticking or binding.

4) Reconnect air supply to the tool.

5) Depress the WCE against the work surface without pulling the trigger. The tool must not operate. Do not use the tool if it operates without pulling the trigger. Personal injury may result.

6) Remove the tool from the work surface. The WCE must return to its original down position. Pull the trigger. The tool must not operate. Do not use the tool if it operates. Personal injury may result.

7) Depress the WCE against work surface. Pull the trigger. The tool must operate.

ADJUSTING THE FASTENER PENETRATION

- 1) Regulate the air pressure to 60psi at the tool.
- 2) Connect the air supply and test for penetration by driving fasteners into a sample piece of wood. If the fasteners do not achieve the desired penetration, adjust the air pressure to a higher setting until the desired penetration is achieved. Do not exceed 110psi at the tool or durability of the tool will be reduced.

CLEARING A JAM FROM THE TOOL

WARNING: Disconnect the air supply from the tool first.

Fastener jammed in fastener discharge area:

- 1) Disconnect tool from the air hose.
- 2) Open the nozzle part, grab jammed fastener with pliers and remove.

Fastener jammed inside magazine:

- 1) Disconnect tool from air hose.
- 2) Pull back the magazine cover.
- 3) Open the nozzle part and remove jammed fastener.
- 4) Push the magazine cover forward until the latch catches.

ASSEMBLY PROCEDURE FOR SEALS

WARNING: Disconnect the air supply from the tool.

When repairing a tool, the internal parts must be cleaned and lubricated. Parker O-lube or equivalent must be used on all O-rings. Each O-ring must be coated with O-lube before assembling. A small amount

of oil must be used on all moving surfaces and pivots.

After reassembling, a few drops of 30W non-detergent oil or equivalent must be added through the air line before testing.

Rapid-Fire Operation

The tool can also be operated by holding the trigger depressed and pushing contact trip against the work piece. A fastener will be driven each time the contact trip is pushed against the work piece. This operating procedure provides rapid-fire fastener driving. Never operate tool unless contact trip is in contact with the work piece.

Troubleshooting Guide

Symptom	Possible Cause(s)	Corrective Action
Air leak near top of tool or in trigger area	Loose screws	Tighten screws
	Worn or damaged O-rings or seals	Install overhaul kit
Tool does nothing or operates sluggishly	Inadequate air supply	Check screws
	Worn or damaged O-rings or seals	Install overhaul kit
Air leak near bottom of tool	Loose screws	Tighten screws
	Worn or damaged O-rings or bumper	Install overhaul kit
Tool jams frequently	Incorrect fasteners	Verify fasteners of correct size
	Damaged fasteners	Replace with undamaged fasteners
	Magazine or nose screw loose	Tighten screws
	Magazine is dirty	Clean screws
	Driver is worn or damaged	Install driver maintenance kit

Limited Manufacturer Warranty

North American Tool (NAT) Industries makes every effort to ensure that this product meets high quality and durability standards. NAT warrants to the original retail consumer a 1-year limited warranty from the date the product was purchased at retail and each product is free from defects in materials. Warranty does not apply to defects due directly or indirectly to misuse, abuse, negligence or accidents, repairs or alterations, or a lack of maintenance. NAT shall in no event be liable for death, injuries to persons or property, or for incidental, special or consequential damages arising from the use of our products. To receive service under warranty, the original manufacturer part must be returned for examination by an authorized service center. Shipping and handling charges may apply. If a defect is found, NAT will either repair or replace the product at its discretion.

DO NOT RETURN TO STORE

For Customer Service:

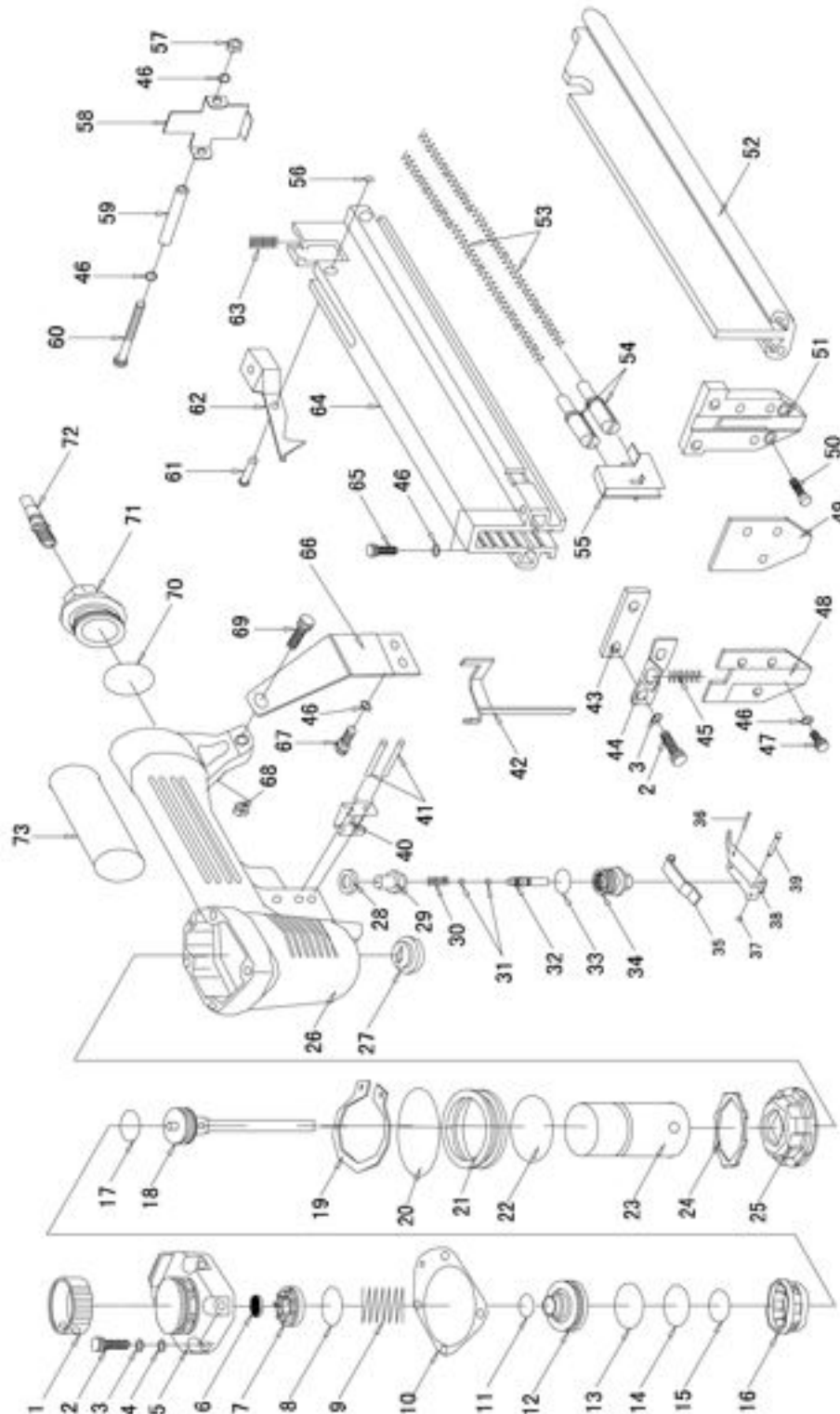
Email: feedback@natitools.com or Call 1-800-348-5004



18 GAUGE 3/8 INCH NARROW CROWN STAPLER

Model: 9387

Parts List



Call 1-800-348-5004 for assistance or replacement parts

Please provide the following information:

- Model number
- Part description and number as shown in parts list
- Serial number (if any)

Address any correspondence to:

North American Tool Industries
84 Commercial Rd
Huntington, IN 46750

NO	Description	QTY
1	Deflector	1
2	Hex Bolt	6
3	Spring Washer	6
4	Washer	4
5	Air Cap	1
6	Seal	1
7	Internal Lining	1
8	O-Ring	1
9	Spring	1
10	Seal	1
11	O-Ring	1
12	Head Valve Piston	1
13	O-Ring	1
14	O-Ring	1
15	O-Ring	1
16	Coiler	1
17	O-Ring	1
18	Driver Blade Unit	1
19	Ring	1
20	O-Ring	1
21	Lining Ring	1
22	O-Ring	1
23	Cylinder	1
24	Gasket	1
25	Bumper	1
26	Body	1
27	Nozzle	1
28	Seal	1

NO	Description	QTY
29	Switch Cap	1
30	Spring	1
31	O-Ring	2
32	Trigger Valve Stem	1
33	O-Ring	1
34	Trigger Valve Seat	1
35	Trigger Plate	1
36	Spring Pin	1
37	O-Ring	1
38	Trigger	1
39	Pin	1
40	Safety Guide	1
41	Pin	2
42	Safety	1
43	Set Plate	1
44	Spring Seat	1
45	Spring	1
46	Washer	9
47	Hex Bolt	3
48	Safety Cover	1
49	Working Contact Element	1
50	Hex Bolt	2
51	Driver Guide	1
52	Magazine	1
53	Spring	2
54	Spring Holder	2
55	Pusher	1
56	O-Ring	1

NO	Description	QTY
57	Lock Nut	1
58	Tail Cover	1
59	Cylinder Pin	1
60	Hex Bolt	1
61	Pin	1
62	Click Lever	1
63	Spring	1
64	Magazine	1
65	Hex Bolt	2
66	Tail Hanger	1
67	Hex Bolt	2
68	Lock Nut	1
69	Hex Bolt	1
70	O-Ring	1
71	End Cap	1
72	Air Plug	1
73	Hand Grip	1

Please carefully read and save these instructions before attempting to assemble, maintain, install, or operate this product. Observe all safety information to protect yourself and others. Failure to observe the instructions may result in property damage and/or personal injury. Please keep instructions for future reference.

Important Operating Instructions



18 GAUGE 1-1/4 INCH BRAD NAILER

Model: 7552

CALIFORNIA PROPOSITION 65

WARNING: You can create dust when you cut, sand, drill or grind materials such as wood, paint, metal, concrete, cement, or other masonry. This dust often contains chemicals known to cause cancer, birth defects, or other reproductive harm. Wear protective gear.

WARNING: This product or its power cord may contain chemicals, including lead, known to the State of California to cause cancer and birth defects or other reproductive harm. Wash hands after handling.

Important!

When using equipment, a few safety precautions must be observed to avoid injuries and damage. Please read the complete operating manual with due care. Keep this manual in a safe place, so that the information is available at all times. If you give the equipment to any other person, give them these operating instructions as well. We accept no liability for damage or

accidents which arise due to non-observance of these instructions and the safety information herein.

SPECIFICATIONS

Operation Pressure: 60-100PSI

Magazine Capacity: 100

Fastener Length: 3/8 - 1-1/4 inch

Uses all types of 18ga. brad nails

CAUTION:

FOR YOUR OWN SAFETY, READ INSTRUCTION MANUAL COMPLETELY AND CAREFULLY BEFORE OPERATING THIS BRAD NAILER.

Any failures made in following the safety regulations and instructions may result in an electric shock, fire, and/or serious injury.

SAFETY INSTRUCTIONS

- 1) Read and understand tool labels and the manual. Failure to follow warnings, dangers, and precautions could result in death or serious injury.
- 2) Use safety equipment such as eye protection, ear protection, gloves, and/or hard hat when applicable.
- 3) Only use compressed air. Use of any air source other than compressed air may cause the tool to explode, which will cause death or serious personal injury.
- 4) Use clean, dry, regulated, compressed air at 60-100psi. Do not use pressure which could exceed 110psi.
- 5) Keep the generator away from all flammable liquids and gases.
- 6) Stay alert while operating the tool. Do not use while under the influence of drugs or alcohol.

For warranty purchases, please keep your dated proof of purchase. File or attach to the manual for safekeeping.

7) Do not overreach when using this tool. Keep proper footing and balance at all times.

8) Check the tool carefully before each use. Do not use if problems are found.

9) Do not attempt to modify or tamper with the tool in any way.

10) Disconnect the tool from the air compressor and power source before making any adjustments, changing the accessories, or storing the tool.

11) Do not load fasteners with the air line connected, or with trigger or Work Contact Element (WCE) depressed.

12) Always fit tool with a fitting or hose coupling on, or near, the tool in such a way that all compressed air in the tool is discharged at the time the fitting or hose coupling is disconnected.

13) Never place hands or any other body parts in the fastener discharge area of the tool.

14) Carry the tool by the handle. Do not carry by the air hose or with the trigger depressed.

15) Do not drive a fastener on top of other fasteners.

16) Do not operate if any warnings or warning labels are not legible.

17) Maintain tools with care.

Check for misalignment or binding of moving parts and for any other condition that may affect the tool's operation.

18) Always assume the tool contains fasteners. Do not point the tool towards yourself or anyone whether it contains fasteners or not.

19) Always keep others at a safe distance from the work area.

20) Avoid long periods of handling the tool. Stop using the tool if you feel pain or stiffness in hands or arms.

21) Always disconnect the air supply before inspecting or performing maintenance on the tool.

22) Avoid using the tool when the magazine is empty. Accelerated wear on the tool may occur.

23) Clean, check, and oil air supply hoses and fittings before connecting the tool to air supply. Replace any damaged or worn hoses or fittings.

OPERATING THE NAILER

CAUTION: Keep fingers away from trigger when not driving fasteners to avoid accidental firing.

RECOMMENDED HOOKUP

The air compressor must be

able to maintain a minimum of 60psi when the tool is being used.

An oiler and a filter can help aid the performance of the tool. Use 3/8 in (10mm) air hoses with a max working pressure of 110psi for 50 ft length or greater. For better performance, install a quick plug with an inside diameter of 5/16 in (8mm) on the tool and a quick coupler on the air hose.

Use a pressure regulator on the compressor with an operating pressure of 60-110psi. A pressure regulator is required to control the operating pressure of the tool between 60 and 100psi.

LOADING THE TOOL

WARNING: Disconnect tool from air hose before loading.

1) Depress the magazine latch. Pull back on the magazine cover.

2) Insert a stick of fasteners into the magazine. Make sure the fasteners are loaded with the points downward. Make sure the fasteners are not dirty or damaged.

3) Push the magazine cover forward until the latch catches.

LUBRICATION

The tool requires lubrication

before using the tool for the first time and before each use. If an inline oiler is used, manual lubrication through air inlet is not required on a daily basis.

NOTICE: Failure to lubricate the tool properly will dramatically shorten the life of the tool and void the warranty.

1) Disconnect the air supply from the tool to add lubricant.

2) Turn the tool so the air inlet is facing up. Place 4-5 drops of 30W non-detergent oil into air inlet. Do not use detergent oil, oil additives, or air tool oil. Air tool oil contains solvents which will damage the tool's internal components.

3) After adding oil, run tool briefly. Clean off any excess oil from the cap exhaust.

CHECKING THE WORK CONTACT ELEMENT (WCE)

NOTICE: Check the operation of the WCE trip mechanism before each use. The WCE must move freely without binding through its travel distance. The WCE spring must return the WCE to its fully extended position after being depressed. Do not operate the tool if the WCE trip mechanism is not operating properly.

1) Disconnect the air supply from the tool.

2) Remove all fasteners from the magazine.

3) Make sure the trigger and Work Contact Element (WCE) move freely up and down without sticking or binding.

4) Reconnect air supply to the tool.

5) Depress the WCE against the work surface without pulling the trigger. The tool must not operate. Do not use the tool if it operates without pulling the trigger. Personal injury may result.

6) Remove the tool from the work surface. The WCE must return to its original down position. Pull the trigger. The tool must not operate. Do not use the tool if it operates. Personal injury may result.

7) Depress the WCE against work surface. Pull the trigger. The tool must operate.

ADJUSTING THE FASTENER PENETRATION

1) Regulate the air pressure to 60psi at the tool.

2) Connect the air supply and test for penetration by driving fasteners into a sample piece of wood. If the fasteners do not achieve the desired penetration, adjust the air pressure to a higher setting until the desired penetration is

achieved. Do not exceed 110psi or the durability of the tool will be reduced.

CLEARING A JAM FROM THE TOOL

WARNING: Disconnect the air supply from the tool first.

Fastener jammed in fastener discharge area:

1) Disconnect tool from the air hose.

2) Open the nozzle part, grab jammed fastener with pliers and remove.

Fastener jam inside magazine:

1) Disconnect tool from the air hose.

2) Pull back the magazine cover.

3) Open the nozzle part and remove jammed fastener.

4) Push the magazine cover forward until the latch catches.

ASSEMBLY PROCEDURE FOR SEALS

WARNING: Disconnect the air supply from the tool before performing maintenance.

When repairing a tool, the internal parts must be cleaned and lubricated. Parker O-lube

or equivalent must be used on all O-rings. Each O-ring must be coated with O-lube before assembling. A small amount of oil must be used on all moving surfaces and pivots.

After reassembling, a few drops of 30W non-detergent oil or equivalent must be added through the air line before testing.

Rapid-Fire Operation

The tool can also be operated by holding the trigger depressed and pushing the contact trip against the work piece. A fastener will be driven each time the contact trip is pushed against the work piece. This operating procedure provides rapid-fire fastener driving. **Never operate tool unless contact trip is in contact with the work piece.**

Troubleshooting Guide

Symptom	Possible Cause(s)	Corrective Action
Air leak near top of tool or in trigger area	Loose screws	Tighten screws
	Worn or damaged O-rings or seals	Install overhaul kit
Tool does nothing or operates sluggishly	Inadequate air supply	Check screws
	Worn or damaged O-rings or seals	Install overhaul kit
Air leak near bottom of tool	Loose screws	Tighten screws
	Worn or damaged O-rings or bumper	Install overhaul kit
Tool jams frequently	Incorrect fasteners	Verify fasteners of correct size
	Damaged fasteners	Replace with undamaged fasteners
	Magazine or nose screw loose	Tighten screws
	Magazine is dirty	Clean screws
	Driver is worn or damaged	Install driver maintenance kit

Limited Manufacturer Warranty

North American Tool (NAT) Industries makes every effort to ensure that this product meets high quality and durability standards. NAT warrants to the original retail consumer a 1-year limited warranty from the date the product was purchased at retail and each product is free from defects in materials. Warranty does not apply to defects due directly or indirectly to misuse, abuse, negligence, or accidents, repairs or alterations, or a lack of maintenance. NAT shall in no event be liable for death, injuries to persons or property, or for incidental, special, or consequential damages arising from the use of our products. To receive service under warranty, the original manufacturer part must be returned for examination by an authorized service center. Shipping and handling charges may apply. If a defect is found, NAT will either repair or replace the product at its discretion.

DO NOT RETURN TO STORE

For Customer Service:

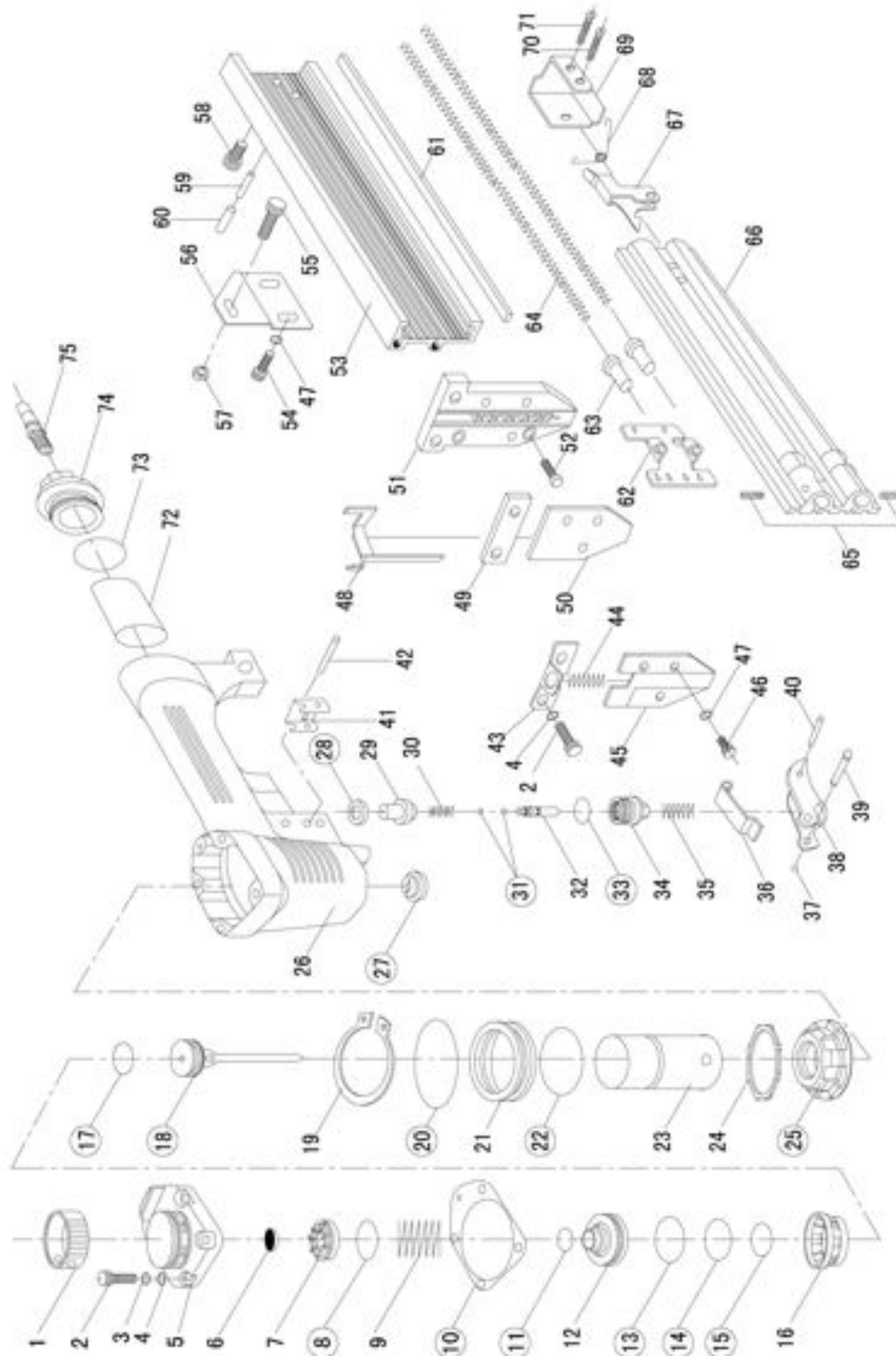
Email: feedback@natitools.com or Call 1-800-348-5004



18 GAUGE 1-1/4 INCH BRAD NAILER

Model: 7552

Parts List



Call 1-800-348-5004 for assistance or replacement parts

Please provide the following information:

- Model number
- Part description and number as shown in parts list
- Serial number (if any)

Address any correspondence to:

North American Tool Industries
84 Commercial Rd
Huntington, IN 46750

NO	Description	QTY
01	Deflector	1
02	Hex. Bolt	6
03	Spring Washer	6
04	Washer	4
05	Air Cap	1
06	Seal	1
07	Internal Lining	1
08	O-Ring	1
09	Spring	1
10	Seal	1
11	O-Ring	1
12	Head Valve Piston	1
13	O-Ring	1
14	O-Ring	1
15	O-Ring	1
16	Collar	1
17	O-Ring	1
18	Driver Blade Unit	1
19	Ring	1
20	O-Ring	1
21	Lining Ring	1
22	O-Ring	1
23	Cylinder	1
24	Gasket	1
25	Bumper	1
26	Body	1
27	Nozzle	1
28	Switch Internal Lining	1
29	Switch Cap	1

NO	Description	QTY.
30	Spring	1
31	O-Ring	2
32	Trigger Valve Stem	1
33	O-Ring	1
34	Trigger Valve Seat	1
35	Spring	1
36	Trigger Plate	1
37	O-Ring	1
38	Trigger	1
39	Pin	1
40	Spring Pin	1
41	Safety Guide	1
42	Spring Pin	2
43	Spring Seat	1
44	Spring	1
45	Cover	1
46	Hex Bolt	3
47	Spring Washer	5
48	Safety	1
49	Set Plate	1
50	Safety Cover	1
51	Driver Guide	1
52	Hex Bolt	2
53	Magazine Unit	1
54	Hex Bolt	2
55	Hex Bolt	1
56	Tail Hanger	1
57	Lock Nut	1
58	Hex Bolt	1

NO	Description	QTY
59	Spring Pin	1
60	Spring Pin	1
61	Set	1
62	Pusher	1
63	Spring Holder	2
64	Spring	2
65	Hex Bolt	2
66	Magazine	1
67	Click Lever	1
68	Spring	1
69	Tail Cover	1
70	Hex Bolt	1
71	Hex Bolt	1
72	Hand Grip	1
73	O-Ring	1
74	End Cap	1
75	Air Plug	1