



FRIGIDAIRE

Factory Parts Catalog

Product No.	FFRH1822R20
Series	Median w/heat
Color	white
Volts	230/208
BTU-Cooling	18500/18200
BTU-Heating	16000/13000
Owner's Guide	16120300A00439
Installation Instructions	2020218a1535
Market	North America

Frigidaire

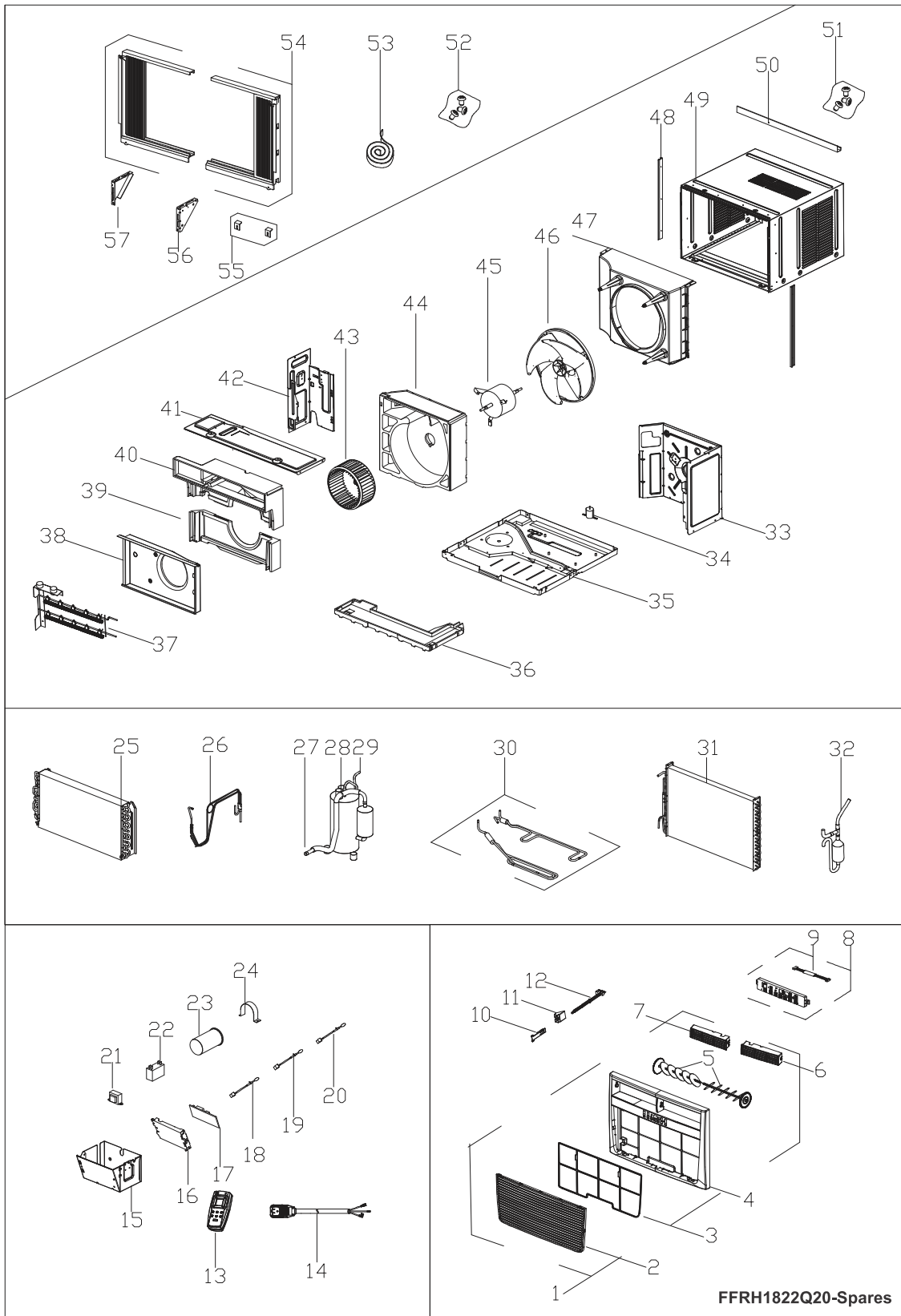
P.O. BOX 8020
CHARLOTTE, NC 28262

ROOM AIR CONDITIONER

Model No.
FFRH1822R2

Publication No.
5995662326
15/06/18
(EN/SERVICE/KC)
099

RECOMMENDED SPARE PARTS



RECOMMENDED SPARE PARTS

POS. NO	PART NO.	DESCRIPTION
1 #	5304483061	Front Assembly, complete panel
2	5304476943	• Panel, front grille, tilt-out
3 #	5304476944	• Filter, air
4	5304483062	• Panel, frame, front
5 #	5304476946	• Louver, vertical
6 #	5304483064	• Louver, Horizontal, Left
7 #	5304483063	• Louver, Horizontal, Right
8 #	5304496261	PC Board, display/input
9 #	5304495009	• Wire, connector, pc boards
10 #	5304495010	Handle, vent control
11 #	5304476359	Link, lever/vent door, detente
12 #	5304476950	Door, vent control, with lever
13 #	5304482937	Remote Control, transmitter
14 #	5304500901	Power Cord, electric, LCDI
15	5304495623	Control Box
16	5304495029	Holder, mounting plate, control
17 #	5304496321	PC Board, main, control/power
18 #	5304487548	Sensor, ambient temp, thermistor
19 #	5304471383	Sensor, temperature, evaporator
20 #	5304476316	Sensor, temperature, discharge air, DAHT
21 #	5304471063	Transformer
22 #	5304482883	Capacitor, fan motor
23 #	5304499940	Capacitor, compressor
24	5304500876	Strap, capacitor clamp
25 #	5304500890	Evaporator, +capillary tube
26 #	5304500891	• Tube, capillary
27 #	5304495654	Tube, suction
28 #	5304499938	Compressor, with overload
29 #	5304500892	Tube, discharge
30 #	5304495628	Tube, condensate evap, drain pan
31 #	5304500893	Condenser
32 #	5304476257	Dryer-filter
33	5304495630	Bulkhead, partition, front/right
34 #	5304476323	Valve, drain
35	5304476324	Base, unit chassis
36	5304472530	Tray, drip pan
37 #	5304472338	Heater Assembly, electric
38	5304495739	Shield, heater housing
39	5304495740	Scroll, blower housing, bottom
40	5304496322	Scroll, blower housing, top
41	5304495632	Cover, blower scroll, front
42	5304495633	Bulkhead, partition, front/left
43 #	5304472346	Blower Wheel, centrifugal fan
44	5304483068	Scroll, blower housing, rear
45 #	5304499941	Motor, fan
46 #	5304472356	Fan Blade, axial flow
47	5304495634	Shroud, condenser/fan
48	5304487567	Retainer, shutter, cabinet sides
49	5304486012	Cabinet, wrapper/sleeve
50	5304476333	Rail, shutter track, top angle
51	5304472546	Screw Kit, top rail mount
52	5304476266	Hardware, mounting, screws/locks
53	5304472366	Seal Kit, foam, sash & rails
54	5304476334	Window Filler Kit, slider panel
55	5304472360	Bracket, sill angle
56	5304482508	Bracket, mounting, right window
57	5304482509	Bracket, mounting, left window

WIRING DIAGRAM

