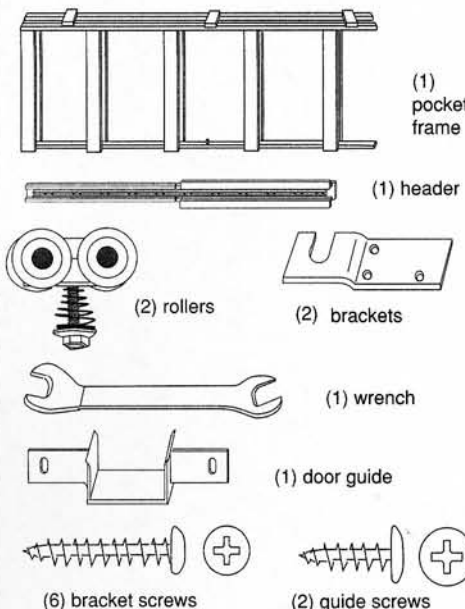


# Pocket Door Frame Installation Instructions

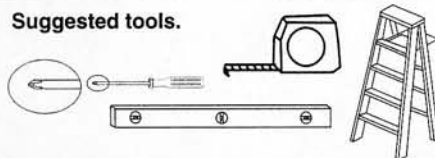
Eliminates the need for door swing space. Use for closets, bathrooms, etc. Turns door swing space into living space.

For 1 3/8" doors 80" tall x 24", 28", 30", 32" or 36" wide.

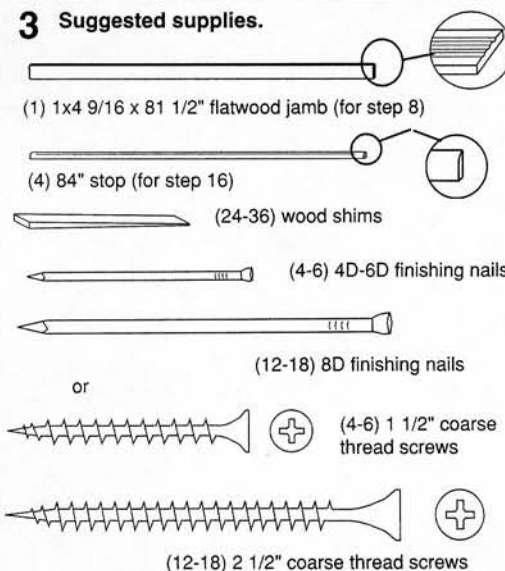
## 1 Parts.



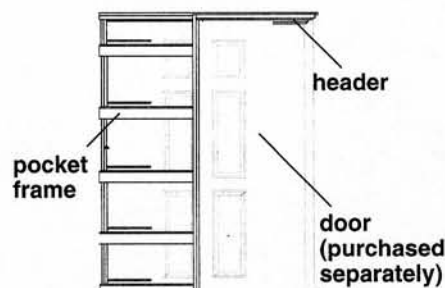
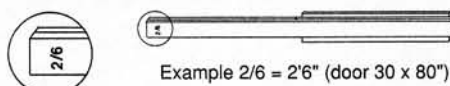
## 2 Suggested tools.



## 3 Suggested supplies.

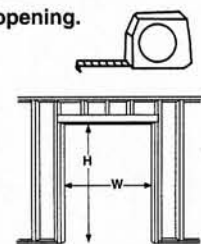


## 4 Check size marked on header.

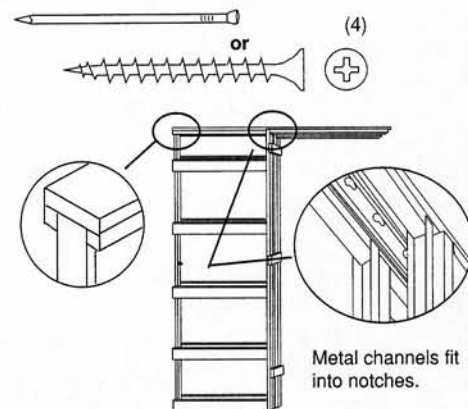


## 5 Check or prepare rough opening.

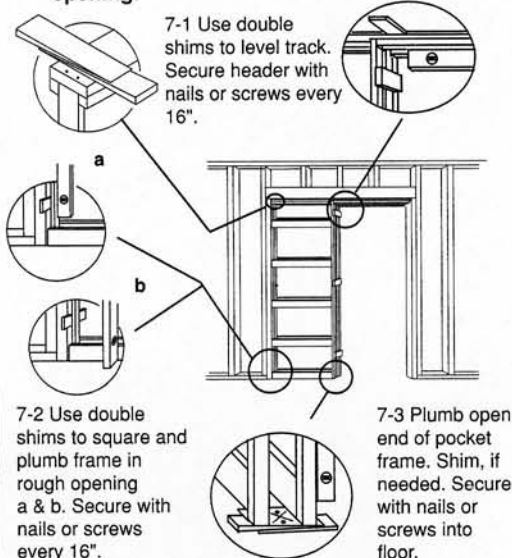
	H	W
24"	84.5"	50.5"
28"	84.5"	58.5"
30"	84.5"	62.5"
32"	84.5"	66.5"
36"	84.5"	74.5"



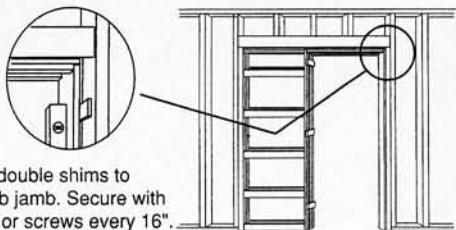
## 6 Attach header to frame.



## 7 Frame into rough opening.



### 8 Add 1 x 4 9/16" flatwood jamb.

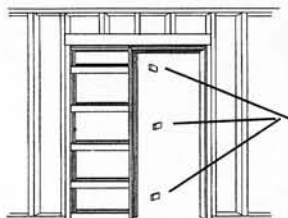


Use double shims to plumb jamb. Secure with nails or screws every 16".

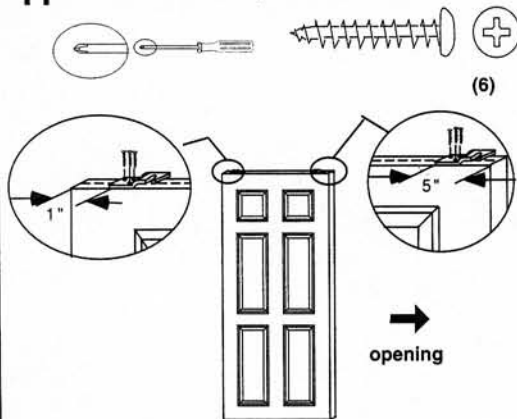
### 9 Install drywall (not shown).

Note: use short (3/4") drywall nails or screws into pocket frame.

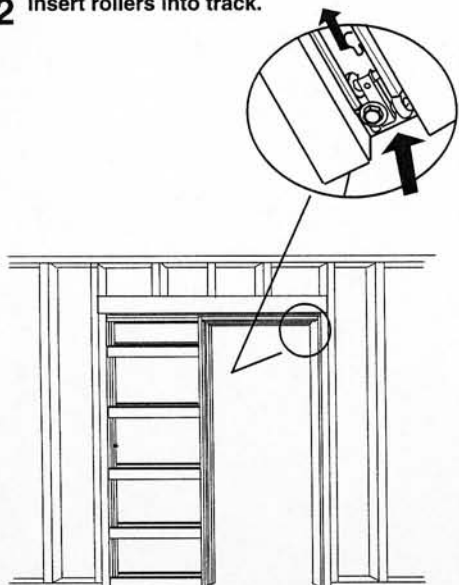
### 10 Remove shipping spacers.



### 11 Add brackets to top of door.

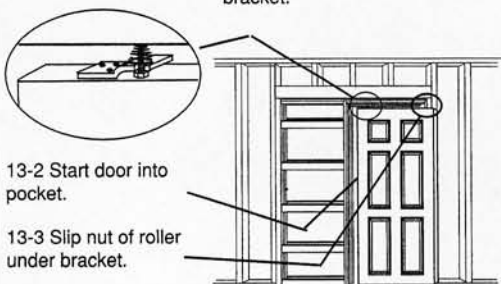


### 12 Insert rollers into track.



### 13 Hang door.

13-1 Slip nut of roller under bracket.

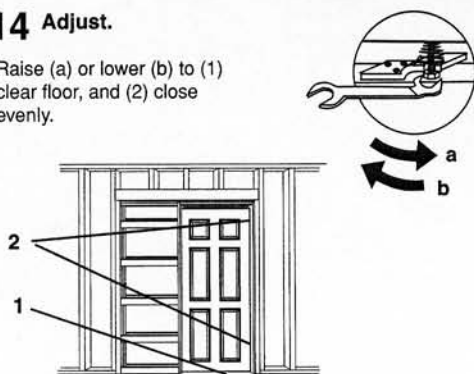


13-2 Start door into pocket.

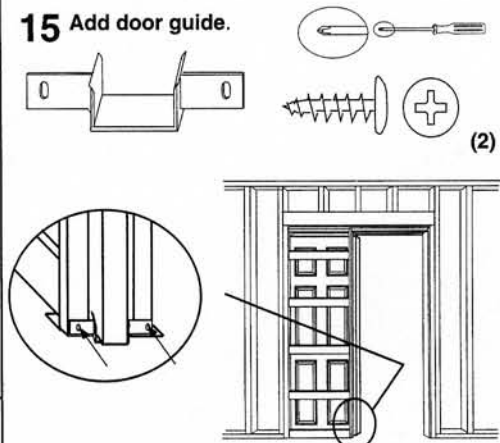
13-3 Slip nut of roller under bracket.

### 14 Adjust.

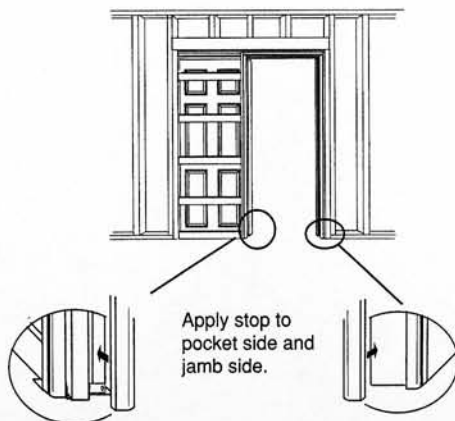
Raise (a) or lower (b) to (1) clear floor, and (2) close evenly.



### 15 Add door guide.



### 16 Finish suggestions.



Apply stop to pocket side and jamb side.

Helpline: 1-800-663-DOOR (3667)  
9 am - 9 pm Mon-Sat  
10 am - 4 pm Sun, EST