



**Halsey Taylor®**  
Satisfying Thirsts Since 1912

## Economy

**MODEL:** ☐ **S300-2E-Q** ☐ **S500-5E-Q** ☐ **S1000-10E-Q**  
☐ **S-L/R (Less Refrigeration)**



These water coolers are certified to  
**NSF/ANSI 61.**

### GENERAL

Self-contained, electric refrigerated, free-standing water cooler designed to be easily accessible to able-bodied individuals. Unit is certified to NSF/ANSI 61 and meets requirements of the Safe Drinking Water Act. Unit provides 50° F water at 80° F inlet water and 90° F ambient.

### CABINET

Heavy-gauge vinyl clad steel. Resistant to wear, moisture, perspiration, heat, and sunlight. Unit mounts flush against wall for a cleaner, more attractive appearance. Optional Stainless Steel is available.

### COOLER TOP

Non-corrosive stainless steel cooler top, number 300 series with satin finish resists stains and corrosion and is easy to maintain. Anti-splash ridge reduces splatter. Contoured to insure proper drainage.

### BUBBLER

Exclusive one-piece, chrome-plated two-stream mound-building bubbler with non-removable anti-squirt feature and integral hood insures a satisfying drink of water.

### AUTOMATIC STREAM HEIGHT REGULATOR

Self-closing assembly is located inside unit to prevent tampering. Unit resists corrosion and lining. A constant stream height is automatically maintained under line pressures that vary from 20 to 105 psi.

### PLUMBING CONNECTIONS

Waste and supply lines secured to back of cabinet. Waste 1<sup>1</sup>/<sub>4</sub>" Supply 3<sup>8</sup>/<sub>16</sub>" tubing.

### INLET STRAINER

Easily cleaned in-line strainer screen traps particles of 140 microns or larger before they enter the waterway.

### TEMPERATURE CONTROL

Positive sensing thermostat for controlling temperature of storage tank water. Factory set at 50° F Adjustable  $\pm 5^{\circ}$  F.

### STORAGE TANK

Non-pressurized stainless steel evaporator/storage tank for long life. Waterways are certified to NSF/ANSI 61, far exceeding the requirements of the Safe Drinking Water Act.

### REFRIGERATION SYSTEM

Hermetically sealed, positive start compressor with lifetime lubrication and built-in overload protection, efficient capillary sizing, large capacity dryer-strainer, and self-lubricated fan cools copper/aluminum condenser. System uses R134A refrigerant. Protected by Halsey Taylor's Limited 5 Year Warranty.

### VENTILATION

Insure proper ventilation by maintaining 6" (152mm) minimum clearance from cabinet louvers to wall.

### SUGGESTED SPECIFICATIONS

Shall deliver ( ) GPH of 50° F water at 90° F ambient and 80° F inlet water. Shall have stainless steel basin with fixed drain strainer. Bubbler shall be two stream, mound-building type. Separate valve and automatic stream regulator shall be mounted within cabinet. Refrigeration system shall employ high efficiency, positive start compressor using R134A, non-pressurized tank with totally encapsulated insulation and be controlled by positive sensing thermostat. The manufacturer shall certify the unit to meet the requirements of NSF/ANSI 61, and the Safe Drinking Water Act. Unit complies with ARI Standard 1010.

NOTE: Continued product improvement makes specifications subject to change without notice. See Halsey Taylor website for most current spec sheet.

## Free-Standing Cooler



**Standard Finish is Platinum Vinyl**

### Optional Finishes (extra cost)

☐ All Stainless Steel

### Optional Accessories (extra cost)

☐ Glass Filler Kit

☐ Sump Pump Kit

☐ Vandal-Resistant Kit

☐ Water Filter

☐ Easy-Flex™ Bubbler

**Trap and service stop not included.**

JOB NAME: \_\_\_\_\_

ENGINEER/CONTRACTOR NAME: \_\_\_\_\_

APPROVAL: \_\_\_\_\_

DATE: \_\_\_\_\_

### SD - ECONOMY SERIES

Model No.	GPH Capacity Cooled to 50° F*				Base Rate Cap.	F.L. Amps	Shipping Weight lb.	Rated Watt Usage
	Ambient Air Temp							
	70°F	80°F	90°F†	100°F				
S300-2E-Q	3.6	3.3	3.0	2.7	3.0	2.5	54	230
S500-5E-Q	6.1	5.5	5.0	4.5	5.0	2.5	60	230
S1000-10E-Q	11.9	10.8	9.8	8.8	9.8	5.8	69	535

\* With projector service and tap water at 80° F

† UL listed and complies with ARI Standard 1010

[halseytaylor.com](http://halseytaylor.com)

HALSEY TAYLOR, 2222 CAMDEN COURT, OAK BROOK, ILLINOIS 60523



**S300-2E-Q, S500-5E-Q,  
S1000-10E-Q, S-L/R**

## Economy Free-Standing Cooler

(CONTINUED)

### PLUMBING CONNECTIONS

Enter directly into cabinet. Waste 1 1/4".  
Supply 3/8" tubing.

**Trap and service stop not included.**

### OPERATING PRESSURES

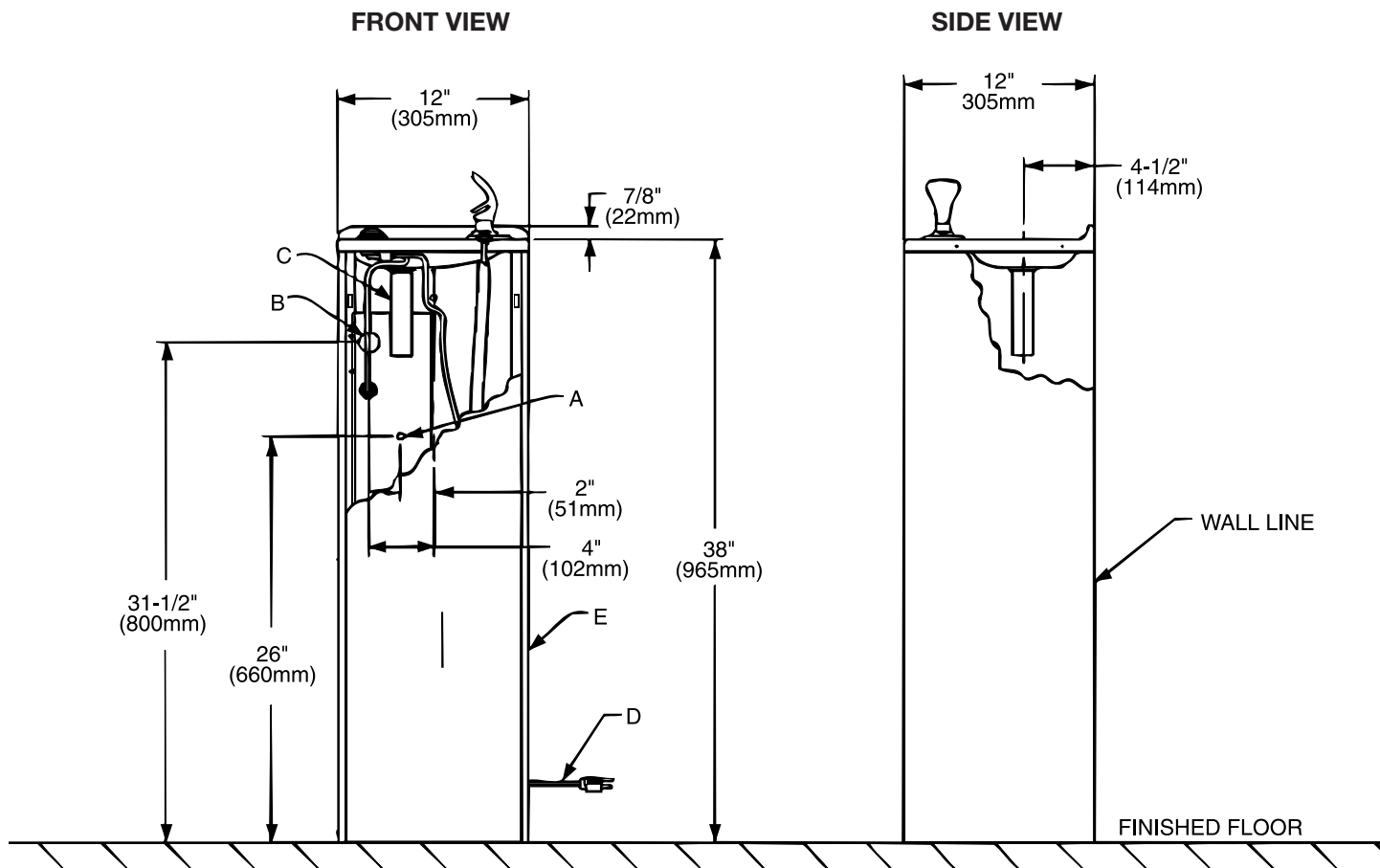
Supply water-105 psi maximum

### ELECTRICAL

Furnished with plug-in, 3-wire grounding type service cord. Standard 120 volt, 60 Hz, single phase. Transformers available for other power supplies. (See capacity chart for amp rating.)

Install 120-volt receptacle, rated at 15-amp minimum to receive 3-wire parallel blade grounding type male plug.

**Note:** Installation outdoors in an unprotected environment is not recommended.



NOTE: A service supply stop must be installed at the cooler inlet line.

A = Recommended water supply location 3/8" O.D. unplated copper tube connect stub 1-1/2" (38mm) out from wall shut off by others

B = Recommended location for waste outlet 1-1/4" O.D. drain

C = 1-1/4" Trap not furnished

D = Electrical supply (3) wire recessed box

E = Insure proper ventilation by maintaining 4" (102mm) (Min.) Clearance from cabinet louvers to wall

**Halsey Taylor®**

Printed in the U.S.A.