



**BLUE<sup>®</sup>  
CLEAN**

Owner's Manual

**Model AR527**





**BLUE<sup>®</sup>  
CLEAN**

## INTRODUCTION

Congratulations on the purchase of your **BLUE CLEAN POWER WASHER!**

Your **BLUE CLEAN POWER WASHER** is a power tool in every sense of the word that may be used inside your house and out. It is one of the finest most powerful home-use pressure washers in the marketplace today.

AR527 features include:

A proprietary all-aluminum water pump.

A full 12-month "bumper to bumper" warranty on the power washer and all parts/accessories.

A quick release Garden Hose Adapter with an incorporated water filter and water check valve.

Two high-pressure lances: Vari-spray lance and Turbo lance

A Total Stop System (TSS) which turns the washer on only when the spray gun trigger is depressed

Industry-leading customer service with one goal "Happy Customers!"

Please familiarize yourself with the following assembly, operating and safety information. Read this manual before using the power washer. Failure to follow these instructions could cause personal injury, property damage, or both. Save this manual for other users to read prior to using the washer.

If you have any questions about or problems with your power washer please call our toll-free number **866-235-5112** and talk with our Customer Service Team at AR North America Inc. We are available to talk with you Monday through Friday from 8 a.m. to 5 p.m. Central Standard Time (CST). We can help you with questions regarding operation, warranty, replacement or optional parts at [info@ar-blueclean.com](mailto:info@ar-blueclean.com).

For more information 24/7 on **BLUE CLEAN POWER WASHERS** go to [www.arblueclean.com](http://www.arblueclean.com). Power washers, parts, and accessories can be ordered online 24 hours a day, 7 days a week for your convenience.

## TABLE OF CONTENTS

Page

Introduction	2
Safeguards, Warnings, and Safety Tips	3,4,5
Package Contents	6
Unpacking & Assembly	7
Detailed Operating Instructions	8, 9
How To's and Operating Tips	9,10
Storage	11
Pump Saver	12
Troubleshooting	13
Replacement Parts	14
Specifications	15
Limited Warranty & Warranty Returns	15



### **SAFEGUARDS, WARNINGS AND SAFETY TIPS**

- To avoid personal injury and/or damage to property and to maximize your pressure washing experience, carefully follow all of the safety tips, instructions, warnings and safeguards and become familiar with all of the controls. Be sure you know how to quickly bleed off the pressure from all parts of your pressure washer, and how to turn off the pressure.
- This pressure washer conforms to CSA and other safety and consumer standards. Do not modify or rebuild any part of your pressure washer.
- Do not use your pressure washer when you are under the influence of alcohol or drugs. Use this power tool carefully and only when you are alert. Never let a child use the pressure washer.
- Watch your balance and footing while using your power washer. Surfaces become slippery when wet and are extra slippery when using a detergent or cleaner.



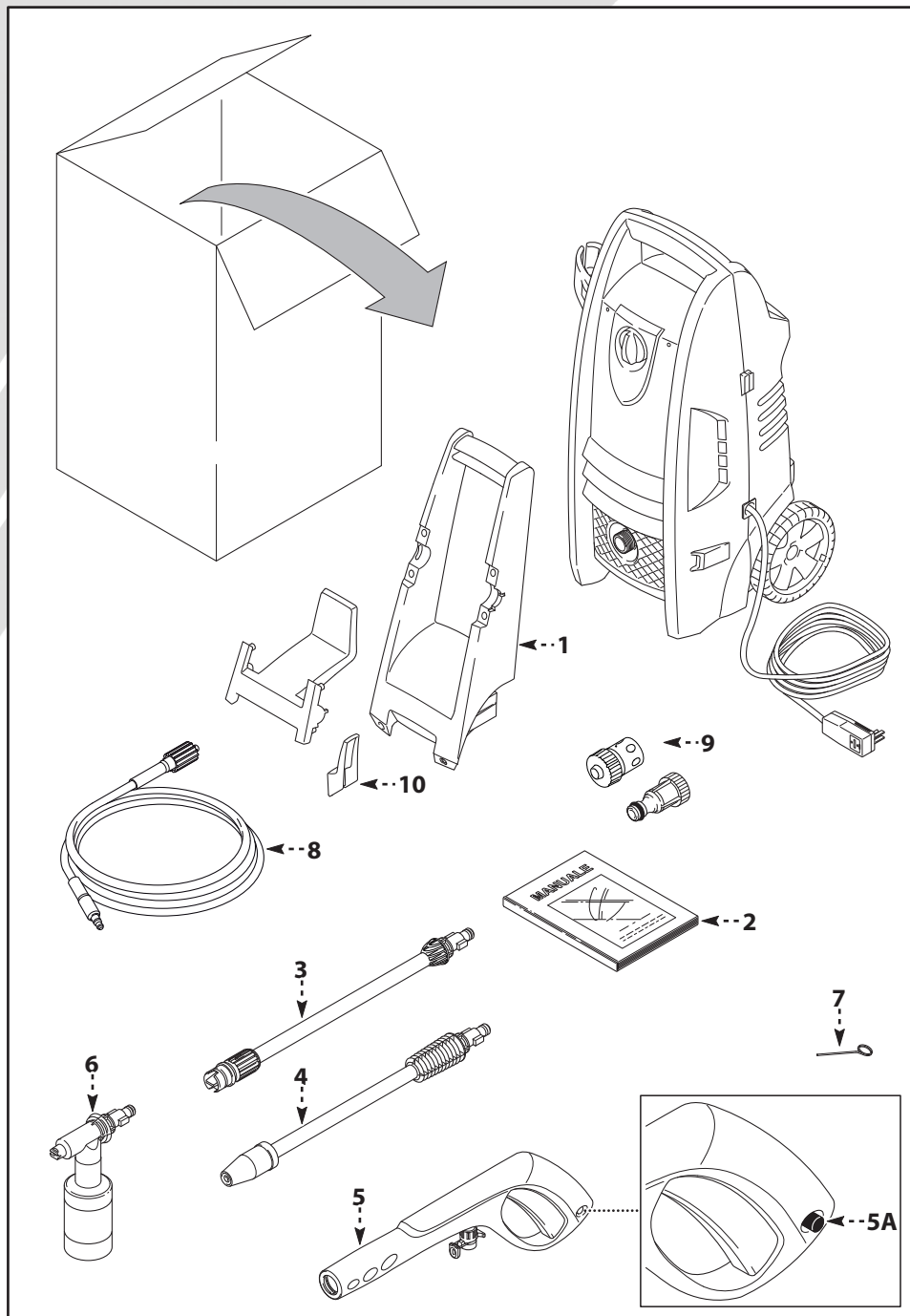
- Never operate the power washer in bare feet, sandals, or open-toe.
- When using the power washer near children make sure they are closely supervised by an adult to avoid injury.
- Keep fingers, hands, feet and any part of your body clear of the stream of high-pressure water. The powerful spray can cause blindness or blast holes in the skin. It can break a window if you are too close when you pull the trigger.
- Always wear eye protection to prevent injury to eyes when operating the power washer.
- To avoid mishaps or injury always use the trigger lock when not using the power washer even if the spraying stops for a moments.
- The pressure washer is equipped with a Ground Fault Circuit Interrupter (GFCI) which greatly reduces the chance of electric shock while the unit is in use.
- Point the gun in a safe direction when beginning a power wash cleaning session.
- When first using the spray gun, hold the gun and lance with two hands when pulling the trigger until you get used to the “kick back” from the gun (one hand to pull the trigger and the other to stabilize the gun assembly).
- When you press the off switch, water pressure may remain in the system. To discharge the pressure, point the gun in a safe direction and pull the trigger.
- Never spray flammable liquids.
- Never use the power washer in areas that contain combustible dust, liquids or vapors.
- Avoid contact of the pressure hose with sharp objects and examine the hose regularly. Replace if damaged. Due to the high pressure involved, it cannot be repaired if cut or damaged.
- Use only detergent specifically formulated for pressure washers and follow instructions on the detergent’s label. We have a selection of power washer detergents to choose from. Go to [www.arblueclean.com](http://www.arblueclean.com) for more information and to order the detergents. Also available at your local hardware store.



- Carries high-pressure washer cleaners. Protect eyes, lungs, and skin from exposure to detergent. Dish or laundry soap is too thick and will clog the nozzle of your detergent bottle.
- **IMPORTANT:** Store the pressure washer indoors to prevent the water in the unit from expanding under freezing conditions. When the water freezes and expands, your pressure washer will be damaged and become inoperable. Or, if storing outdoors you must use Pump Saver. Pump Saver can be purchased on our website: [www.arblueclean.com](http://www.arblueclean.com). See details on how to use Pump Saver on page 11 of this manual.
- Never use hot water with your pressure washer. It will overheat and damage the high-pressure pump.
- Never leave the power washer unattended while it is powered “on”.
- Always turn the water supply to “on” before turning the pressure washer power to on. Running the pump dry will cause damage to the internal components.
- Never use a water supply to your pressure washer that exceeds 150 psi maximum.
- Never disconnect the high pressure hose from the pressure washer while the system is pressurized.
- Never permanently engage the trigger mechanisms on the gun.
- Never operate the pressure washer unless all components are properly and securely connected.
- Never allow the pressure washer pump to run after you have turned off the water supply for more than one minutes since the motor and pump will overheat and fail.
- Never use lances or other parts that have not been supplied with your pressure washer.
- Never use an extension power cord since it defeats the effectiveness of the GFCI and increases the chance of electrocuting the operator.
- Never spray any electric outlet with your power washer.
- Inspect the power cord before using and do not use it if it is damaged.

## PACKAGE CONTENTS

1. Power washer unit
2. Manual
3. Adjustable spray lance
4. Turbo lance
5. Spray gun-picture (5A shows trigger lock button)
6. Detergent bottle
7. Nozzle cleaning wire-taped to the manual for safe keeping
8. High-pressure hose
9. Garden hose adapter kit-2 pieces: clear plastic adapter & blue/black collar attachment
10. Accessory holder



## UNPACKING & ASSEMBLY

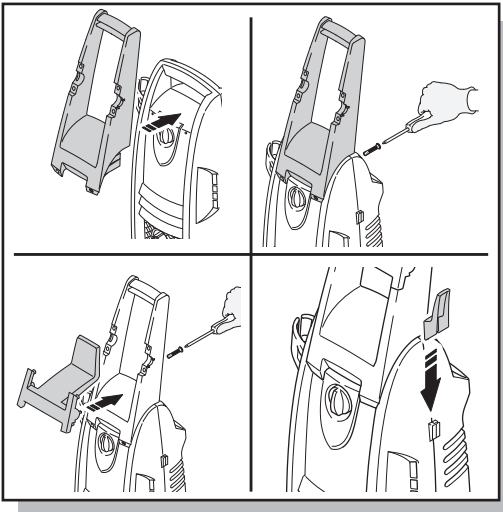


Fig.1

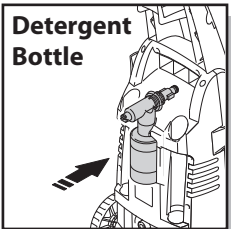


Fig.2

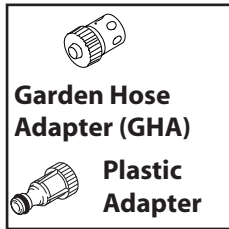


Fig.3

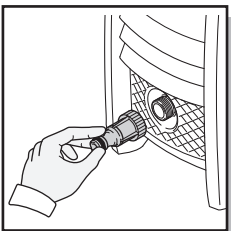


Fig.4

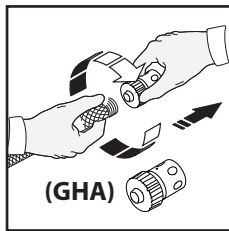


Fig.5

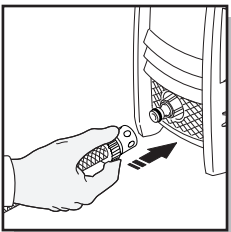


Fig.6

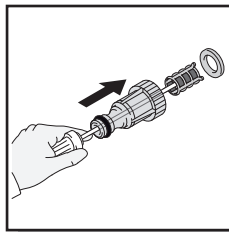


Fig.7

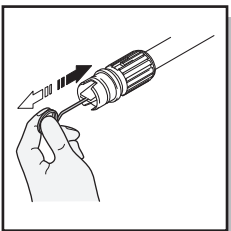


Fig.8

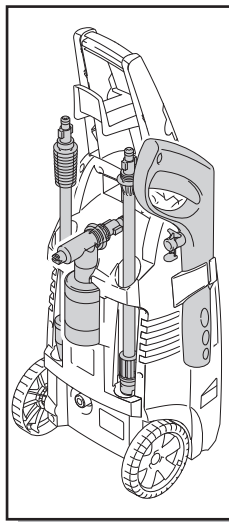


Fig.9

- After unpacking the **BLUE CLEAN POWER WASHER**, lay out parts and accessories. Familiarize yourself with the parts in the package by comparing them to those listed on the "PACKAGE CONTENTS" page.
- The **BLUE CLEAN POWER WASHER** requires some minor assembly. You'll need a Phillips screwdriver to install the plastic accessories holder which is also the electric power cord holder.
- Install the plastic accessories holder on the back of your **BLUE CLEAN POWER WASHER** (Fig.1). You'll notice where the accessories holder meets the back of the unit there are several male index posts which fit into female holes. The posts and holes enable easy placement of the accessories holder and easy tightening of the screws. Place the screws in the holes provided on the accessories holder and screw them in. Do not use a power screwdriver. When the screw is completely tight (about four to six turns) give a small final clockwise twist of the screwdriver. Do not overtighten. After the accessories holder is installed you will notice a square "hole" approximately in the middle of the holder into which our square detergent bottle may be stored and easily retrieved if you decide to use a detergent in your **BLUE CLEAN POWER WASHER** (Fig.2).
- Using one of the supplied screws install the small electric power cord holder below the accessories holder so that the "L- shaped holder faces downward. The electric power cord can now be wrapped around the accessories holder and the bottom L-shaped holder while your power washer is not in use (Fig.1)
- Please refer to Fig. 9 for accessory storage location on the accessories holder.
- Install the garden hose adapter (GHA) and quick connect filter. It is made up of two separate pieces. (1) A clear plastic adapter with a screen filter (about 3 inches long) and (2) a blue/black collar attachment (Fig.3).
- First, remove the plastic shipping cover on the water inlet on the front of the power washer. Attach the clear plastic adapter by screwing it into the water inlet (Fig.4). Hand tight is fine. Next screw on the blue/ black collar attachment to your garden hose (Fig.5). Slide the blue/ black collar onto the clear adapter (Fig.6). It will "click" into place. Now turn on the water at the faucet. The water is now connected to your power washer.
- To remove the water hose, simply pull back on the blue collar, and it will slide off the clear adapter. Note: this can be done at any time. Water will not come out of the garden hose as the blue/black collar has a water check valve. Water will only flow from the garden hose when it is connected to the clear adapter.
- The screen inside the clear adapter should be cleaned periodically. Insert a pen or pencil in small hole at the end of the adapter. The screen filter will slide out (Fig.7). Rinse it with clean water, then place it back in the adapter.
- Keep the nozzle cleaning wire, Which is taped to this manual for use in unclogging the lance nozzle (Fig.8). If you lose the cleaning wire an unbent paper clip works fine.
- You have now completed the assembly of your **BLUE CLEAN POWER WASHER** and are now ready to begin using your electric power washer. Read and observe all safety instructions.

## DETAILED OPERATING INSTRUCTIONS

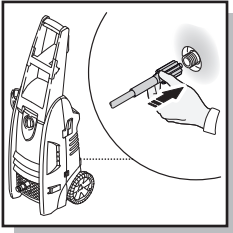


Fig.10

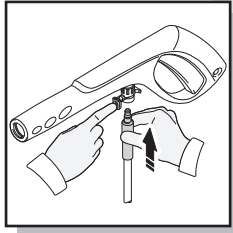


Fig.11



Fig.12

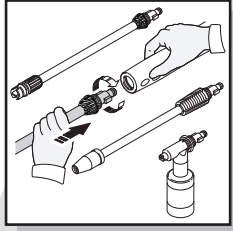


Fig.13

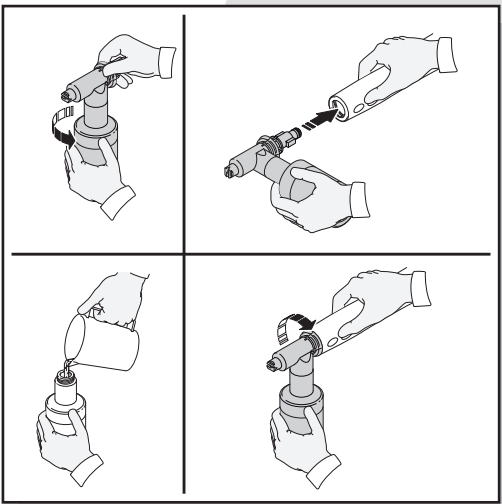


Fig.14

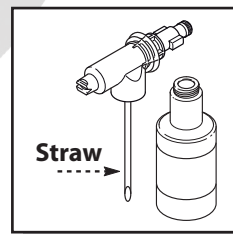


Fig.15

- Screw the high pressure hose (clockwise) on the back of the unit at the bottom Fig 10. The end of the hose must be inserted into the water outlet far enough so the collar can thread onto the outlet threads until hand tight. Do not use pliers or vice grips to tighten. If it takes fewer than six or so turns you have not properly tightened the high pressure hose fitting. It is easier to position the pressure washer in front of you so to ensure that the threads are started correctly. Failure to properly tighten the high pressure hose will result in the hose slipping or popping off immediately upon turning the unit. Do not worry about damage if this occurs - just reinstall and take extra care at screwing on the high pressure hose fitting.
- Connect the other end of the high-pressure hose to the gun by inserting the brass metal tip of the high-pressure hose into the fitting just ahead of the trigger guard. It will lock into the gun with a "click". Fig 11 Confirm the hose is locked into the spray gun by pulling slightly on the hose. The hose should be securely installed and will not come out. To release the hose from the spray gun, press the blue button on the underside of the gun toward the trigger guard. The hose will slide out from the connection.
- Activate the trigger of the gun by aiming the gun away from you and push the lock from right to left. Fig 12 After doing so, squeeze or pull the trigger to make sure it is locked and will not move. Get in the habit of leaving the safety lock to "on" when the pressure washer is not in use. This ensures the gun is in "safe" mode until it is ready for use.
- While the spray gun is in the locked position, insert the turbo lance, the adjustable spray lance, or the detergent bottle directly into the end of the spray gun by inserting and pushing together and turning clockwise simultaneously. To remove push together and turn counter clockwise. Release trigger when changing lances or the detergent tank. Fig 13 Push safety button to lock the trigger before removing lance or detergent tank to ensure that they do not accidentally eject with force during installation.
- When using the detergent bottle, fill it with a properly formulated detergent or cleaner with water ratio according to instructions on the container. Fig 14 The detergent bottle comes with a straw which is pressure fitted to the screw-on top. Fig.15 If the straw is not there, look inside the bottle and attach it to the screw-on top. Spray detergent or cleaner from the bottom up on vertical surfaces to prevent detergent/ cleaner from running down into your stains and/or dirt. Your local hardware store will have power washer cleaners for different cleaning projects. The cleaning solution should be the consistency of water to prevent clogging your detergent bottle and nozzle.



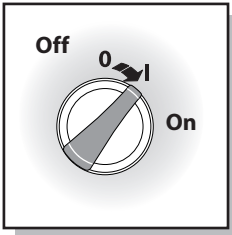


Fig.16

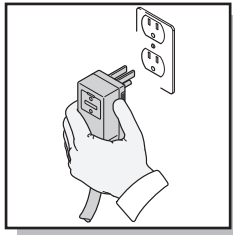


Fig.17

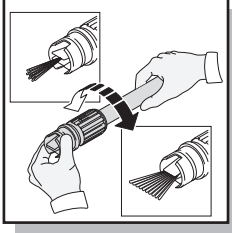


Fig.18

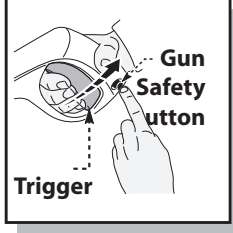


Fig.19

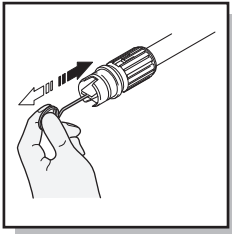


Fig.20

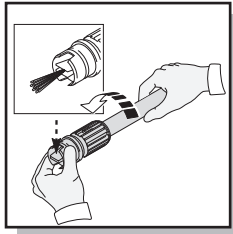


Fig.20

- Release safety lock on gun while aiming gun away from yourself and others by pressing the safety button from left to right, then pull or squeeze the trigger. Fig 15  
When using the adjustable spray lance, the spray pattern and intensity can be controlled according to power of water needed for each task. Twist the spray nozzle at the far end of the lance. Fig 18. Make sure not to aim the gun at bare feet, fingers, hands or any other part of your body since it has enough power to blast away skin or put out an eye. It also has the power to damage paint, glass, or other materials if the gun is too close to the surface or if the spray is concentrated into its smallest stream.

- When using the Turbo lance make sure the turbo nozzle is screwed on tight to the lance each time you use it. The Turbo lance is designed for high impact cleaning. Only use on hard surfaces such as driveways, cement surfaces, patio bricks, etc. A test strip should be done prior to avoid chance of damaging the surface.

### HOW TO'S AND OPERATING TIPS

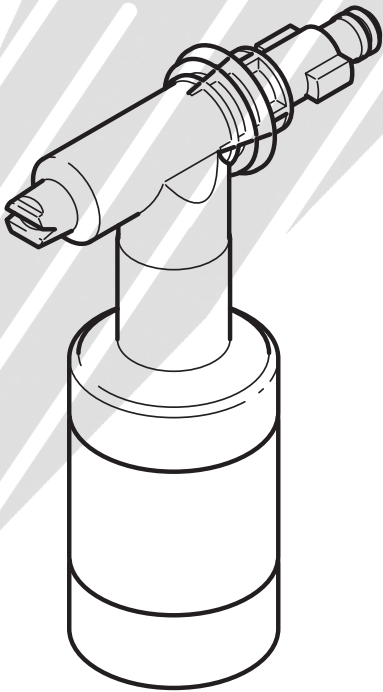
- A clogged or partially clogged nozzle can cause significant reduction of water pressure coming out of the nozzle and/or cause the unit to pulsate while spraying.
- Turn off the unit.
- Turn off the water supply to the unit.
- Relieve any pressure trapped in the hose by squeezing the trigger 2-3 times.
- Remove lance (turbo nozzle or adjustable spray nozzle) from gun.
- Rotate nozzle on the adjustable lance to the narrow stream setting which opens up the fan blades Fig 19.
- Using the tip cleaner provided(or an unfolded paper clip), insert the wire into the nozzle hole and move back and forth until debris is dislodged Fig 20. Back flush water through the nozzle using garden hose and highest pressure available (either standard water nozzle or use your thumb over the nozzle to create water pressure for back flush).

## HOW TO AVOID DAMAGING SURFACES

- Damage to surfaces being cleaned occurs because the impact force of the water pressure exceeds the durability of the surface. Bare wood can be penetrated, paint can be peeled off, etc. You can vary the force of your pressure washer by controlling:
  - the fan pattern of the nozzle (when using the adjustable nozzle)
  - the angle of the surface being cleaned
  - the distance of the nozzle from the surface being cleaned
- Never use a narrow high-pressure stream of water or the turbo lance on soft surfaces susceptible to damage.
- Use the adjustable spray lance when cleaning windows. Be sure to adjust the nozzle to a wide fan spray pattern and place the nozzle approximately four to five feet away from the window with the nozzle at forty five degree angle. Squeeze the trigger and vary the fan spray pattern and angle until optimum cleaning efficiency is achieved.
- If you hear the motor run intermittently when the trigger is not being squeezed, that is normal. The pump is priming itself so it is ready to operate when the trigger is squeezed. Turn off the power washer if not being used after ten minutes.

## DETERGENT BOTTLE TIPS

- Use detergents designed for power washers. We offer four power washer detergents. They are Auto, Motorcycle, Boat and Universal. These can be purchased online at our website [www.arblueclean.com](http://www.arblueclean.com) or go to any hardware store or home center for power washer detergents. The cleaning solution should be the consistency of water in order to prevent clogging your detergent bottle and nozzle.
- When using the detergent bottle, the application ratio of water to detergent is 10:1 or 10 parts water to 1 part detergent.
- This system applies detergent under low pressure. The cleaning power of the detergents is enhanced when applied with a low pressure; when time and pressure is allowed to break down the dirt and grime. The combination of low pressure and chemical action is very effective and can be better than scrubbing if applied properly. On vertical surfaces being cleaned, apply detergent to lower surfaces and work your way up to prevent detergent from causing streaks in the dirt and grime. Rinse detergent by pressure washing from bottom up for same reason.
- If a stain is particularly tough, it may be necessary to reapply the detergent and use a stiff bristled brush to scrub the stain. Subsequent power washing after brushing should successfully complete your cleaning job.



## STORAGE

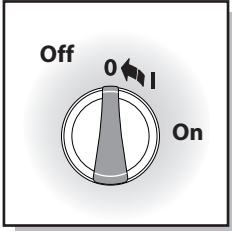


Fig.22

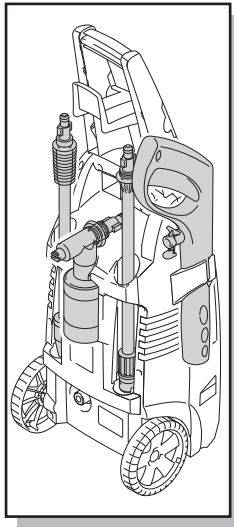


Fig.23

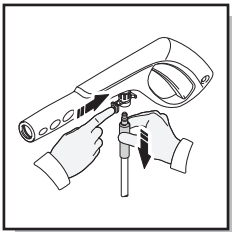


Fig.24

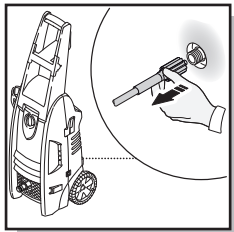


Fig.25

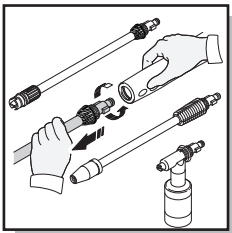


Fig.26

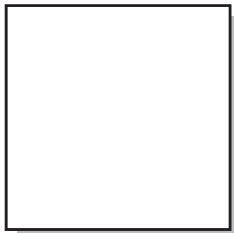


Fig.27

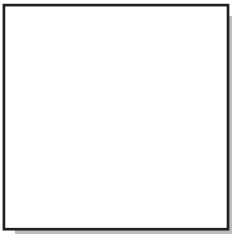


Fig.28

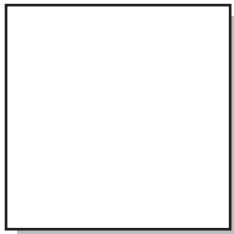
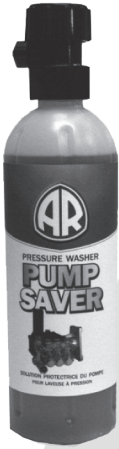


Fig.29

- When your pressure washing session has been completed, turn off the water supply and pull the trigger until water flow stops and IMMEDIATELY turn off the power switch located on the back of the pressure washer. (Fig.22) To prevent damage to the pressure washer's motor and/or pump. Do not allow the power washer to run with no water flowing through it.
- The GHA should be stored in the accessories holder when your unit is not in use to prevent loss or damage. (Fig.23)
- Remove high pressure hose from gun (Fig.24) and unscrew the other end of the high pressure hose from the pressure washer. (Fig.25)
- Remove lance or detergent bottle from the gun and place in the accessories holder. (Fig.23) Make sure to remove the leftover detergent from the bottle. Flush the bottle and nozzle head with fresh water to prevent clogging.
- Unplug power cord and wrap around accessories holder using the extension tabs at the 3:00 % 9:00 position and the L-shaped power cord holder/tab located at the 6:00 position. (Fig.27)
- Place the gun in the accessories holder in the left slot. Lances are pressed into and stored in the half circle notches. (Fig.23)
- The pressure hose is stored on the hose reel located above the accessories holder. With the front of the pressure washer facing towards you, insert the un-threaded end of the power hose into the square hole and begin turning the handle away from you (counterclockwise). (Fig.28) Pull the handle out horizontally with your right hand in order to unlock it. When the reel has gone about 1/4 turn with the fitting inserted into the square hole, place the hose under the indentation on the side of the reel to keep it in place while winding it up.(Fig.29)
- When finished winding, push the handle back in to lock it in place. Please remember: the hose reel is only for storing the high-pressure hose. The hose must be completely removed from the hose reel each time you use the power washer.
- DO NOT store the power washer where it is exposed to freezing temperatures unless you use Pump Saver. Freezing will damage the pump unless Pump Saver is added to the unit after use. If not using or if storing your pressure washer for more than one month run pump saver through it. See page 11 for more information.

## PUMP SAVER

Pump Saver is a product that keeps the internal parts of the pump from freezing damage and lubricated while being stored in ALL climates. It also assists in internal anti-corrosion protection. The Blue Clean part # is: AR64511 (16oz bottle)



### Pump Saver Instructions

Follow the manufacturer's storage instructions for your pressure washer. To prevent staining, protect the surface under the pressure washer from any excess fluid. Wear eye protection when using this product.

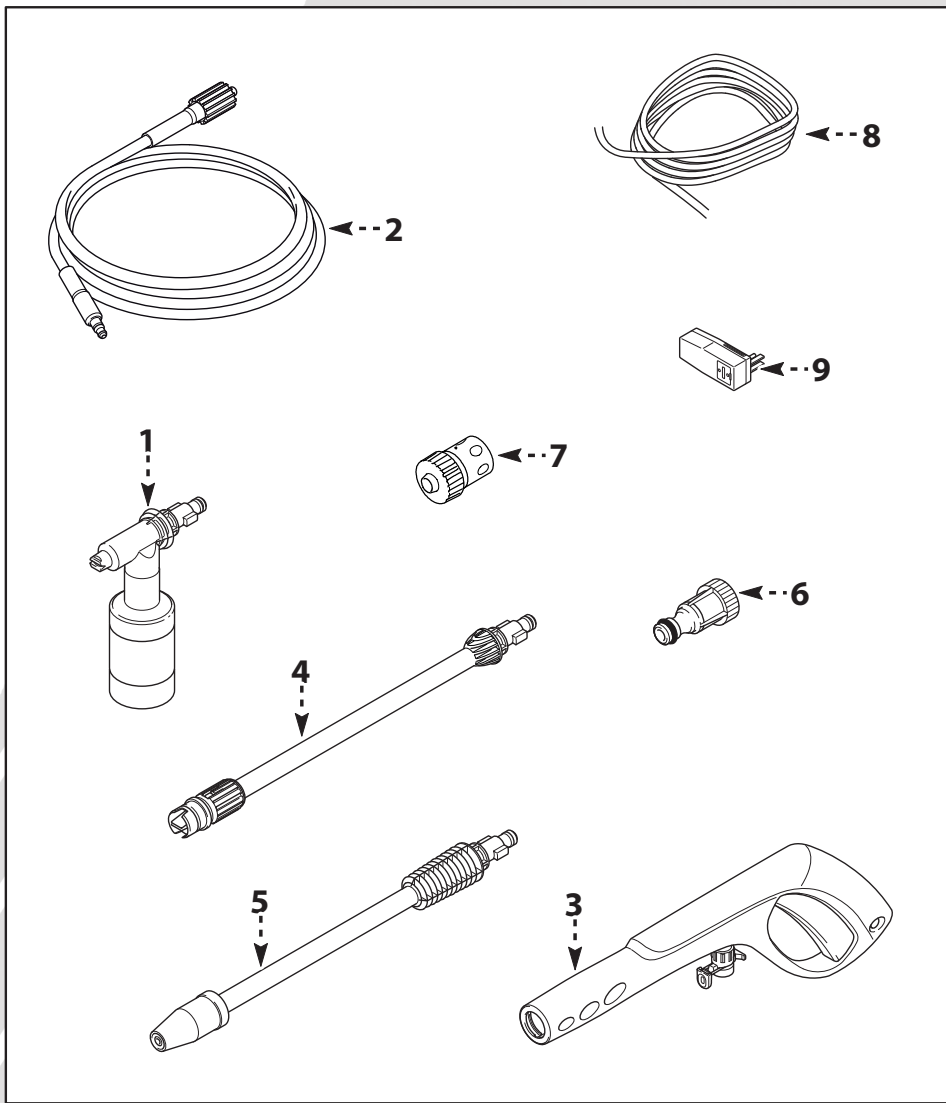
1. Turn off your pressure washer.
2. Disconnect all hoses.
3. Shake the bottle well before connecting to the pressure washer.
4. Screw the dispensing valve and bottle of the Pump Saver into the water inlet on your pressure washer.
5. Turn the handle on the bottle to the open position.
6. Turn the pressure washer on. Turn the pressure washer off as soon as the pump saver fluid begins to exit the water outlet.
7. Turn the valve on the bottle to the off position and remove the pump saver bottle and valve assembly from the pressure washer.

## TROUBLESHOOTING AND FAQs

<p><b>Unit will not turn on.</b></p>	<p>Plug in the electrical cord to a grounded 120 volt outlet (no electrical extension should be used). If the electrical cord will not plug into our outlet, try turning the plug upside down and plug it in. If it still does not plug in, your electrical outlet is not properly grounded and should not be used. Use another electrical outlet or call an electrician to change the outlet. Press reset button on GFCI power box. If color of red contact is not visible on reset button, unplug and plug in again, press reset and look for red contact. Make sure power switch on pressure washer is turned to ON. Squeeze trigger and try again. If above didn't correct the problem, try plugging into another electrical outlet and repeat the above procedure.</p>
<p><b>The high-pressure (HP) hose will not connect / stay connected to the spray gun. Is this a spray gun problem?</b></p>	<p>In most cases, the spray gun is not the problem. The problem is the rubber sleeve covering the fitting at the end of the HP hose. It has likely slipped up toward the metal tip*. The fix: wiggle, twist and or pull the rubber sleeve down until the entire tip is visible plus an 1/8" of the steel fitting below the tip. Now try to insert the hose tip into the spray gun. It should "click" into place and will not come out until the hose is released by pushing in the lever on the underside of the gun. * or cut away the sleeve with sharp knife if unable to move the sleeve down.</p>
<p><b>The unit is running but there is not water flow.</b></p>	<p>Check the water source. Unclog the nozzle in the lance. (see nozzle cleaning instructions on page 7).</p>
<p><b>Why is water leaking where the high-pressure hose connects to the spray gun?</b></p>	<p>Make sure there is an o-ring at the end of the metal tip of the HP hose. If no o-ring is present the connection between the hose and spray gun will leak. O-Ring Kits are available online at <a href="http://www.arblueclean.com">www.arblueclean.com</a> or call Customer Service at 866-235-5112 to place an order.</p>
<p><b>I can't remove the lance from the spray gun. What should I do?</b></p>	<p>All lances and the detergent tank are attached and removed from the spray gun in the same manner. Insert the quickrelease end of the lance/detergent bottle into the gun. Press the gun and lance together (about an 1/8") and turn clockwise. The lance will lock in place. To remove the lance reverse the procedure. Press the gun and lance together and turn counter clockwise. The lance will slide out.</p>
<p><b>The power washer turns on for 2 seconds, shuts off, and will not turn back on. Do I have a defective unit?</b></p>	<p>It sounds like your power washer is working just fine. When the water is connected, the high-pressure hose, spray gun and spray lance are all connected, with the power switch turned on,** the power washer will turn on for 1 to 2 seconds to prime the pump. Then it automatically shuts off and waits for the spray gun trigger to be squeezed. When the trigger is squeezed water starts flowing through the power washer, the water sensor in the pump "senses" the moving water and automatically turns the power washer pump on. The water coming out of the spray gun lance will be under high pressure. The pump has a Total Stop System (TSS) which means the pump is not turned on if there is no water flow. Aim carefully and begin cleaning. **The power switch has international symbols for On and Off. On=(-) and Off = (O)</p>



## REPLACEMENT PARTS



Pos.	Description	Part Number	Qty.
1	Detergent Bottle	PW3080160	1
2	Hose (QC)	PW50969	1
3	Spray Gun	PW50968	1
4	Adjustable Lance/Nozzle	PW50975	1
5	Turbo Lance/Nozzle	PW3080170	1
6	Garden Hose Adapter (clear plastic)	PW3082130	1
7	Garden Hose Adapter (blue/black)	PW3082301	1
8	Electric Cord w/GFCI	DX2761401110	1
9	GFCI Assembly	DX2761401110-1	1

### Pump Spare Part Kits

Water Seals & Valves	PW3081290	1
Pre-Assembly TSS	PW308350	1
O-Ring Kit	PW909104K	1

## SPECIFICATIONS

Model	Max PSI (lbs/sq/in)	Max GPM (gal/per/min)	Max Temp	Volts	Amps	Weight (lbs)
AR527	1,800	1.58	122°F	120	11	19.5

## LIMITED WARRANTY

This product is under warranty to the original retail consumer against defects in material and workmanship for a period of 1 (one) year and is a complete “bumper to bumper” warranty including the spray gun, the high-pressure hose and all accessories from the date of purchase. The warranty is not transferable or assignable. This warranty covers replacement parts. This limited one year warranty applies only to products used in consumer applications and is void in rental or any commercial application. Reasonable care must be used in conformity with operation and maintenance instructions in the owner’s manual and quick start guide. Failure to follow these instructions will void this warranty.

## WARRANTY RETURNS

Keep your original receipt of purchase in case of warranty claim. Any pressure washer or parts returned for a warranty claim must have a “RETURNED MERCHANDISE AUTHORIZATION (RMA) NUMBER.” You must obtain an RMA NUMBER by calling A.R. NORTH AMERICA, INC. at 866-235-5112 Monday through Friday, 8 a.m. to 5 p.m. (CST), or e-mail [info@ar-blueclean.com](mailto:info@ar-blueclean.com). Any return without an RMA NUMBER will be considered unauthorized and will be shipped back at the expense of the sender. Freight costs to the company for warranty work must be paid by the purchaser.

Cleaning and troubleshooting tips, manuals and other helpful information are available on our website. For parts and accessories for your Blue Clean washer, visit [www.arblueclean.com](http://www.arblueclean.com). Ordering is easy and all major credit cards are accepted.

A.R. NORTH AMERICA, INC.  
Attn: Pressure Washer Warranty Department  
140 81st. Avenue NE, Fridley, MN 55432  
Phone: 866-235-5112  
Fax: 866-331-2762  
Email: [info@ar-blueclean.com](mailto:info@ar-blueclean.com)  
Website: [www.arblueclean.com](http://www.arblueclean.com)

