

# NINJA®

BL250  
OWNER'S GUIDE

## Pulse Blender



[www.ninjakitchen.com](http://www.ninjakitchen.com)  
1-877-646-5288

# IMPORTANT SAFETY INSTRUCTIONS

## For Household Use Only

**WHEN USING ELECTRICAL APPLIANCES, BASIC SAFETY PRECAUTIONS SHOULD ALWAYS BE FOLLOWED, INCLUDING THE FOLLOWING:**

**READ ALL INSTRUCTIONS BEFORE USING YOUR NINJA® PULSE BLENDER.**

### **POLARIZED PLUG**

**⚠ WARNING:** To reduce the risk of electric shock, this appliance has a polarized plug (one blade is wider than the other). This plug will fit into a polarized outlet only one way. If the plug does not fit fully into the outlet, reverse the plug. If it still does not fit, contact a qualified electrician to install the proper outlet. **DO NOT modify the plug in any way.**

**⚠ WARNING:** Extension cords are not recommended for use with this product.

**⚠ WARNING:** TO REDUCE THE RISK OF FIRE, ELECTRIC SHOCK OR INJURY:

- 1 **⚠ CAUTION:** Blade assembly is sharp and removable, handle with care. When handling the blade assembly, always hold by the shaft.
- 2 **⚠ CAUTION:** DO NOT BLEND HOT LIQUIDS.
- 3 To protect against electrical shock, do not submerge the appliance or allow the power cord to come into contact with water or any other liquid.
- 4 **DO NOT** allow young children to operate the appliance or use as a toy. Close supervision is necessary when any appliance is used by or near children.
- 5 Never leave an appliance unattended when in use.
- 6 Appliance accessories are not intended to be used in the microwave as it may result in damage to the accessories.
- 7 Turn the appliance Off and remove the power cord from the electrical outlet when not in use, before assembling or disassembling parts and before cleaning. To unplug, grasp the plug and pull from the electrical outlet. Never pull from the power cord.
- 8 **DO NOT** abuse the power cord. Never carry the appliance by the power cord or yank it to disconnect from electrical outlet; instead grasp the plug and pull to disconnect.



- 9 **DO NOT** operate any appliance with a damaged cord or plug, or after the appliance malfunctions, has been dropped or damaged in any manner. This appliance has no serviceable parts. Return the appliance to EURO-PRO Operating LLC for examination, repair or adjustment.
- 10 **DO NOT** let the power cord hang over the edge of table or counter or touch hot surfaces such as the stove.
- 11 Always use appliance on a dry, level surface.
- 12 Keep hands, hair, clothing, as well as utensils out of container while processing to reduce the risk of severe injury to persons or damage to the appliance. A scraper may be used but only when the appliance is not running.
- 13 Avoid contact with moving parts.
- 14 **DO NOT** attempt to sharpen blades.
- 15 **DO NOT** use the appliance if blade assembly is bent or damaged.
- 16 To reduce risk of injury, never place the blade assembly on base without pitcher or bowl properly attached.
- 17 **DO NOT** operate this appliance on or near any hot surfaces (such as gas or electric burner or in a heated oven).
- 18 The use of attachments or accessories including canning jars, not recommended by the manufacturer may result in fire, electric shock or personal injury.
- 19 **DO NOT** remove the container from the motor base while the appliance is in operation.
- 20 To reduce the risk of injury, **NEVER** operate the appliance without the lid in place; **DO NOT** try to defeat the interlock mechanism; make sure that the attachment is properly installed before operating the appliance.
- 21 **DO NOT** expose containers to extreme temperature changes.
- 22 **DO NOT** overfill.
- 23 **DO NOT** operate the appliance empty.
- 24 To reduce the risk of burns, always allow the appliance to cool before taking off parts and before cleaning.
- 25 If the appliance overheats, a thermal switch will become activated and shut off the motor. To reset, unplug the appliance and let it cool down for approximately 30 minutes before using again.
- 26 **THIS PRODUCT IS INTENDED FOR HOUSEHOLD USE ONLY.** Do not use this appliance for anything other than its intended use. Do not use outdoors.

# SAVE THESE INSTRUCTIONS

# Contents

**Thank you for  
purchasing the  
Ninja® Pulse  
Blender.**

Getting to Know Your Ninja Pulse Blender .....	5
Assembling the Ninja Pulse Blender .....	7
Using the Ninja Pulse Blender .....	8
Care & Maintenance .....	9
Troubleshooting Guide .....	10
Recipes .....	11
Warranty and Registration .....	14

## **THIS BOOK COVERS MODEL NUMBER:**

BL250 30

## **TECHNICAL SPECIFICATIONS**

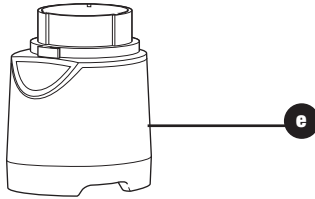
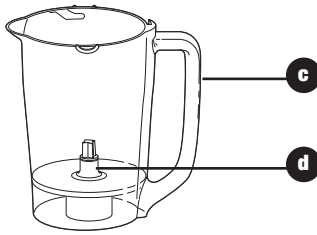
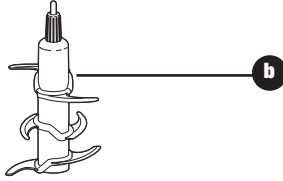
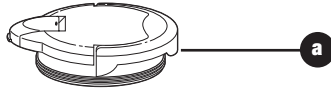
Voltage: 120V., 60Hz.

Power: 700 Watts

Pitcher Capacity: 48 ounces (6 cups)



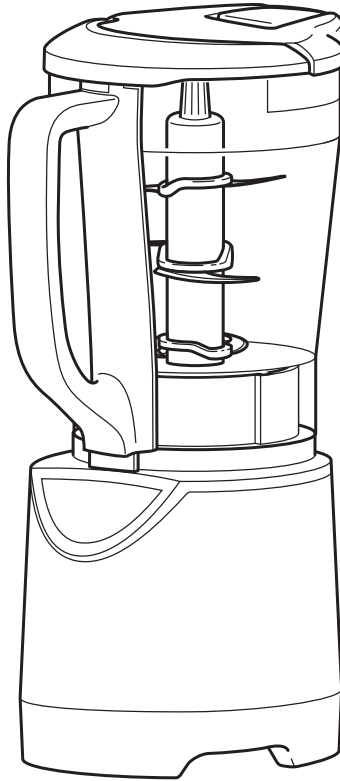
# Getting To Know Your Ninja® Pulse Blender



- a** Lid
- b** 6-Blade Assembly
- c** 48 oz. Pitcher

- d** Drive Gear
- e** Motor Base
- f** Power Cord (not shown)

The Ninja® Pulse Blender is a high powered innovative tool with a compact design and outstanding performance. It is perfect for ice crushing, chopping, and frozen blending. Best results are achieved when you Pulse.



**FEATURES:**

- Ninja Blade Technology
- 48 oz. Pitcher - BPA Free
- Cord storage
- Pulse Power: Controlled blending and processing by using short pulses. In short intervals, press down on the lid and pulse to the perfect consistency.

For best results, be sure to carefully read all the instructions contained in the manual before using this appliance.

# Assembling the Ninja® Pulse Blender

## PLEASE KEEP THESE IMPORTANT SAFEGUARDS IN MIND WHEN USING THE APPLIANCE:

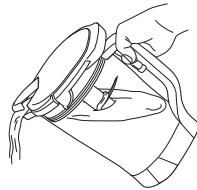
- ⚠ **WARNING:** Never leave the appliance unattended while in use.
- ⚠ **CAUTION:** Blades are sharp! Use extreme caution when handling the blade assembly. Always hold them by the shaft of the blade assembly.
- ⚠ **CAUTION:** DO NOT BLEND HOT LIQUIDS.
- ⚠ **CAUTION:** Never remove the container while the appliance is still running.

**IMPORTANT:** Never add ingredients into the container before placing the attachment in first.

**IMPORTANT:** DO NOT attempt to operate the appliance without the lid on.

**IMPORTANT:** Never run the appliance empty

**IMPORTANT:** Appliance accessories are not intended to be used in the microwave as it may result in damage to the accessories.



- ⚠ **CAUTION:** Blade assembly is not locked in place. If using the pour spout, ensure the lid is tightly secured onto the blender pitcher.



- ⚠ **CAUTION:** Blade assembly is not locked in place. If pouring with the lid removed, ALWAYS remove the blade assembly first.
- ⚠ **CAUTION:** Blade assembly is sharp, not locked in place and removable, handle with care. When handling the blade assembly, always hold them by the shaft.

## BEFORE FIRST USE

- 1 Remove all packaging material and labels from the appliance.
- 2 Wash the lid, pitcher and blade assembly in warm, soapy water with a soft cloth.
- ⚠ **CAUTION:** Handle the blade assembly with care when washing, as the blades are very sharp.
- 3 Rinse and dry thoroughly.
- 4 The pitcher, lid and blade assembly are all dishwasher safe. It is recommended that the lid and blade assembly go on the top rack. Ensure that the blade assembly is removed from the pitcher before placing in the dishwasher.
- 5 Wipe the motor base clean with a damp cloth.

## Using the Ninja® Pulse Blender

**⚠ WARNING:** Never leave the appliance unattended while in use.

**⚠ CAUTION:** Handle the blade assembly with care, as the blades are very sharp.

**IMPORTANT:** Make sure that the motor base is plugged in for use.

### ASSEMBLY

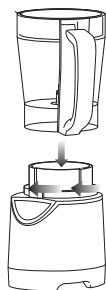


Fig. 1

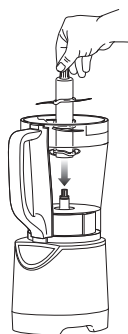


Fig. 2



Fig. 3

### PULSE



Fig. 4

### REMOVAL



Fig. 5

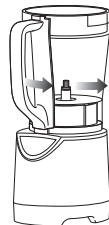


Fig. 6

1 Place the motor base on a clean, dry, level surface such as a counter or table top.

2 Align and lower the pitcher onto the motor base. (Fig. 1) Handle should be aligned slightly to the left of the "LOCK" symbol on the motor base.

3 Rotate the pitcher clockwise until it locks in place. You will hear a click when the lock is engaged. (Fig. 1)

4 Holding the desired attachment by the shaft, place it onto the drive gear inside the container. Ensure that the attachment is seated properly and is standing upright. (Fig. 2)

**NOTE:** The blade assembly will fit loosely on the drive gear.

5 Add the ingredients to the pitcher, making sure that they do not exceed the highest measured marking line on the side of the pitcher.

**NOTE:** If you need to add additional ingredients while the appliance is processing, open the pour spout cap and pour the ingredients in through the opening.

6 Plug the power cord into the electrical outlet.

7 Holding the lid by the handle in the upright position, place it on top of the bowl aligning the arrow (▼) located on the lid with the arrow (▲) located on the pitcher's handle. (Fig. 3)

8 Push down on the "PULSE" on the handle to start the appliance. (Fig. 4)

**NOTE:** Pulse ingredients for even chopping by pressing down in short intervals.

9 When you have reached your desired consistency, stop pressing the lid handle and wait for the attachment to stop turning.

10 Depending on the consistency of the contents in the container, open the pour spout cap and use the spout to empty liquid contents. For thicker consistencies, remove the lid and attachment carefully (by its shaft), then empty contents from the container.

**⚠ CAUTION:** Blade assembly is not locked in place. If using the pour spout, ensure the lid is tightly secured onto the blender pitcher. If pouring with the lid removed, ALWAYS remove the blade assembly first.

11 To remove the lid, pull the handle up to a 90° angle and pull the lid straight up. Remove the pitcher from the base by turning the pitcher handle counter clockwise and then lift off. (Fig. 5, Fig. 6)

**⚠ CAUTION:** Never insert your hands in the pitcher as the blades are sharp. Always use a spatula to dislodge food that has stuck to the sides of the pitcher.

12 Make sure that the unit is unplugged when not in use.



# Care & Maintenance

## HOW TO CLEAN

- ⚠ CAUTION: Make sure that the motor base is unplugged from the power source before inserting or removing any attachment and before cleaning.**
  - ⚠ CAUTION: DO NOT immerse the motor base into water or any other liquid.**
  - ⚠ CAUTION: Handle the blade assembly with care, as the blades are very sharp.**
- 1 Separate/remove all parts from each other.
  - 2 Clean the motor base with a damp cloth and wipe dry.
  - 3 Place the pitcher in the dishwasher. Place the lid and blade assembly on the top rack. Use caution when handling the blade assembly as the blades are very sharp.

### OR

- 4 Carefully hand wash the lid, pitcher and blade assembly in warm, soapy water with a soft cloth.

Please call customer service if any servicing needs to be performed on the appliance at 1-877-646-5288.

## HOW TO STORE

- 1 Store the Ninja® Pulse Blender upright with the pitcher, blade assembly and cover on the motor base. Do not place anything on top.

## RESETTING THE MOTOR THERMOSTAT

The Ninja Pulse Blender features a unique safety system which prevents damage to the unit's motor and drive system should you inadvertently overload your appliance. If the appliance is being overloaded, the motor will stop. To reset the appliance, follow the resetting procedure below:

- 1 Unplug the appliance from the electrical outlet.
- 2 Remove and empty the container and ensure that no food is jamming the blades.
- 3 Allow the appliance to cool for approximately 30 minutes.
- 4 Re-install the container onto the base and re-plug the appliance into the electrical outlet.
- 5 Proceed to use the appliance as before making sure not to exceed the recommended maximum capacities.

## Troubleshooting Guide

PROBLEMS	POSSIBLE REASONS & SOLUTIONS
<b>Motor Doesn't Start or Attachment Doesn't Rotate.</b>	<ul style="list-style-type: none"> <li>• Make sure the container is securely aligned and locked on the motor base.</li> <li>• Make sure the lid is securely on the container in the correct position with the arrows aligned.</li> <li>• Check that the plug is securely inserted into the electrical outlet.</li> <li>• Check the fuse or circuit breaker in your electrical box.</li> <li>• The unit could be overloaded. Unplug and wait approximately 30 minutes before using again.</li> <li>• The unit could be overheated. Unplug the unit and wait 30 minutes to reset.</li> </ul>
<b>Food is Unevenly Chopped.</b>	<ul style="list-style-type: none"> <li>• Either you are processing too much food at once, or you are not pulsing properly. Remove some of the food items if the pitcher is overfilled or press the "Pulse" on the handle in short intervals.</li> </ul>
<b>Food is Too Finely Chopped or Too Watery.</b>	<ul style="list-style-type: none"> <li>• The food has been over processed. Pulse ingredients for best results. Press down on the "pulse" on the lid handle in short intervals.</li> </ul>
<b>You Cannot Achieve Snow From Ice Cubes.</b>	<ul style="list-style-type: none"> <li>• For best results use ice straight from the freezer. Try using short pulses instead of one long one.</li> </ul>
<b>Unit doesn't turn on.</b>	<ul style="list-style-type: none"> <li>• Make sure the unit is plugged in.</li> <li>• Press down on the "pulse" on the lid handle to turn the unit on.</li> <li>• The unit could be overheated. Unplug the unit and wait 30 minutes to reset.</li> </ul>
<b>Unit doesn't turn off.</b>	<ul style="list-style-type: none"> <li>• Release your hand from the "pulse" on the lid handle to turn the unit off.</li> </ul>
<b>Doesn't mix well.</b>	<ul style="list-style-type: none"> <li>• Pulse ingredients for best results. Press down on the "Pulse" on the lid handle in short intervals for even blending and chopping. For frozen ingredients, pulse in short intervals of 2-5 seconds, then press down continuously on the "Pulse" on the lid handle.</li> </ul>



# EURO-PRO

## ONE (1) YEAR LIMITED WARRANTY

**EURO-PRO Operating LLC** warrants this product to be free from material defects and workmanship for a period of one (1) year from the date of purchase when utilized for normal household use, subject to the following conditions, exclusions and exceptions.

The liability of **EURO-PRO Operating LLC** is limited solely to the cost of the repair or replacement of the unit at our option. This Limited Warranty does not cover normal wear of parts and does not apply to any unit that has been tampered with or used for commercial purposes. This Limited Warranty does not cover damage caused by misuse, abuse, negligent handling or damage due to faulty packaging or mishandling in transit. This Limited Warranty does not cover damage or defects caused by or resulting from damages from shipping or repairs, service or alteration to the product or any of its parts, which have been performed by a repair person not authorized by **EURO-PRO Operating LLC**.

If your appliance fails to operate properly while in use under normal household conditions within the Limited Warranty period, you may return the complete appliance and accessories with proof of purchase and date, freight prepaid. For Customer Service support, call 1-877-646-5288 or visit our website [www.ninjakitchen.com](http://www.ninjakitchen.com).

If the appliance is found by **EURO-PRO Operating LLC** to be defective, in **EURO-PRO Operating LLC's** sole discretion, we will repair or replace it free of charge. Proof of purchase date and a check made payable to **EURO-PRO Operating LLC** in the amount of \$19.95 to cover the cost of return shipping and handling must be included.\*

This Limited Warranty is extended to the original purchaser of the unit and excludes all other legal, implied and/or conventional warranties. The responsibility of **EURO-PRO Operating LLC** if any, is limited to the specific obligations expressly assumed by it under the terms of this Limited Warranty. In no event is **EURO-PRO Operating LLC** liable for incidental or consequential damages to anyone of any nature whatsoever. Some states do not permit the exclusion or limitation of incidental or consequential damages, so the above may not apply to you.

This Limited Warranty gives you specific legal rights, and you may also have other rights which vary from state to state or from province to province.

**\*IMPORTANT: Carefully pack item to avoid damage in shipping. Be sure to include proof of purchase date and to attach tag to item before packing with your name, complete address and phone number with a note giving purchase information, model number and what you believe is the problem with the item. We recommend you insure the package (as damage in shipping is not covered by your Limited Warranty). Mark the outside of your package "ATTENTION CUSTOMER SERVICE".**

---

## PRODUCT REGISTRATION

Please visit [www.ninjakitchen.com](http://www.ninjakitchen.com) or call **1-877-646-5288** to register your new Ninja® product within ten (10) days of purchase. You will be asked to provide the store name, date of purchase and model number along with your name and address.

The registration will enable us to contact you in the unlikely event of a product safety notification. By registering you acknowledge to have read and understood the instructions for use, and warnings set forth in the accompanying instructions.

Euro-Pro Operating LLC

US: Newton, MA 02459

CAN: Ville St-Laurent, QC H4S 1A7

1-877-646-5288

[www.ninjakitchen.com](http://www.ninjakitchen.com)

Copyright © Euro-Pro Operating LLC 2015

**Euro-Pro** and **Ninja** are registered trademarks of Euro-Pro Operating LLC.

For Shark Ninja U.S. Patent information visit [www.europro.com/USPatents](http://www.europro.com/USPatents)

Illustrations may differ from actual product. We are constantly striving to improve our products, therefore the specifications contained herein are subject to change without notice.

Printed in China

BL250\_30\_IB\_150610\_4