

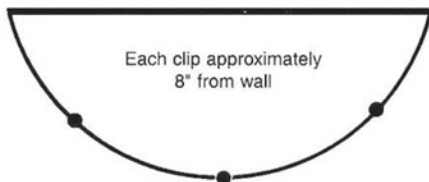
- Place Window well Cover over well. If it doesn't fit, the steel well may be bent out of shape. Tap metal well with sledge hammer to fit cover.



- When straightened, place cover back over window well, centered. Mark position of holes for clips on center of well rim with a marker. Follow diagram below for recommended placement of clips.

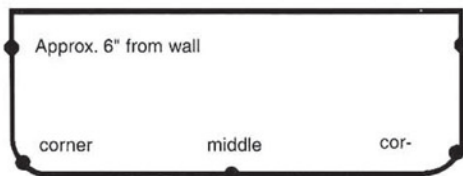


- Smaller Sizes



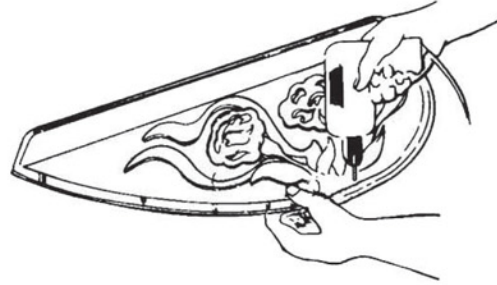
3 Clips

- Medium Sizes

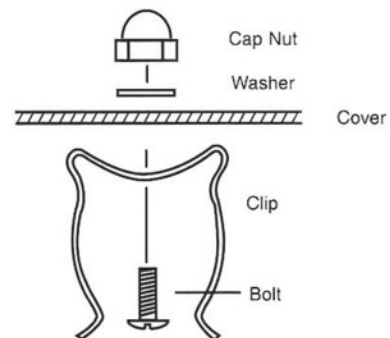


5 Clips

- Remove Window Well Cover and drill a 3/16" hole at each marked location. If it is cold out, this can be done in the convenience of your house or garage.



- Mount clips to Window Well Cover using bolts and cap nuts provided. **IMPORTANT!** Put bolt through clip, cover and washer. Secure using cap nut provided (see below).



- Snap Window Well Cover onto rim of window well. Adjust tension clips by loosening or tightening cap nuts. Your Window Well Covers are now easily removable for cleaning and ventilation.



Cleaning: Window covers may be cleaned with a mild solution of detergent and water. Use of harsh chemicals or solvents may damage plastic and void warranty.

LIMITED WARRANTY

Shape Products, LLC. warrants its Low Profile window well covers for a period of seven (7) years from the date of purchase. This warranty only extends to the original purchaser. This warranty does not apply to damage from accident, misuse, normal wear, alteration, improper installation, improper maintenance or abuse. ANY IMPLIED WARRANTIES WHICH THE PURCHASER MAY HAVE ARE LIMITED IN DURATION TO SEVEN (7) YEARS FROM THE DATE OF PURCHASE. Some states do not allow limitations on how long an implied warranty lasts, so the above limitation may not imply to you. Shape Products, LLC. will replace a defective window well cover free of charge, (except for dealer labor and shipping). Contact Shape Products, LLC. at the address listed below (or see your Shape dealer) to obtain service under this warranty. Proof of purchase is required and replacement is the sole remedy of the purchaser under this warranty, and in no event shall Shape Products be liable for any incidental or consequential damages, losses or expenses. Some states do not allow the exclusion of incidental or consequential damages, so the above limitation or exclusion may not apply. This warranty gives specific legal rights and you may also have other rights which vary from state to state.

