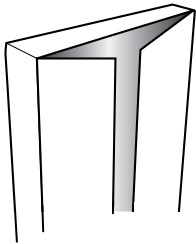


Premium Double Security Screen Door Kit Installation Instructions



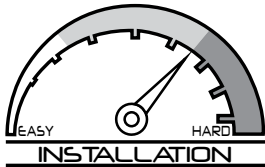
DISREGARD INSTRUCTIONS INCLUDED WITH DOOR PANELS

- Read completely through the kit installation instructions before proceeding with installation
- Installation requires two people
- Use appropriate protective equipment, including safety glasses
- Children should not be allowed in work area
- Failure to install door correctly could result in injury



RETAIN PACKAGING DURING INSTALLATION

Do NOT discard packaging materials until installation is complete



PROFESSIONAL INSTALLATION RECOMMENDED

Above average degree of difficulty. Requires installation experience.



helpmeinstallit.com

NEED HELP?

REVIEW INSTALLATION VIDEO

Even professional installers will benefit from watching.



1-866-317-8867
support@uhdco.com

CONTACT US BEFORE RETURNING

Customer service and technical support are available.
Monday - Friday: 6:30am - 4pm PST

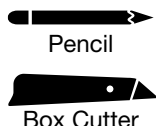
RECOMMENDED TOOLS



Safety Glasses



Measuring Tape



Pencil

Box Cutter



Drill Bits

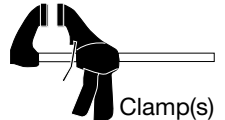
1/8", 3/32" & 7/64"
minimum length: 2-3/4"
1/2" Spade Bit



Drill



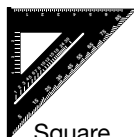
Needle Nose
Pliers



Clamp(s)



Phillips-head & Flat-blade
screwdriver



Square



Tin Snips



Level



1/2" Wood Chisel



Rubber Mallet



Wood Blocks (2"x4"x6")
Shims



Paintable Caulk &
Caulk Gun

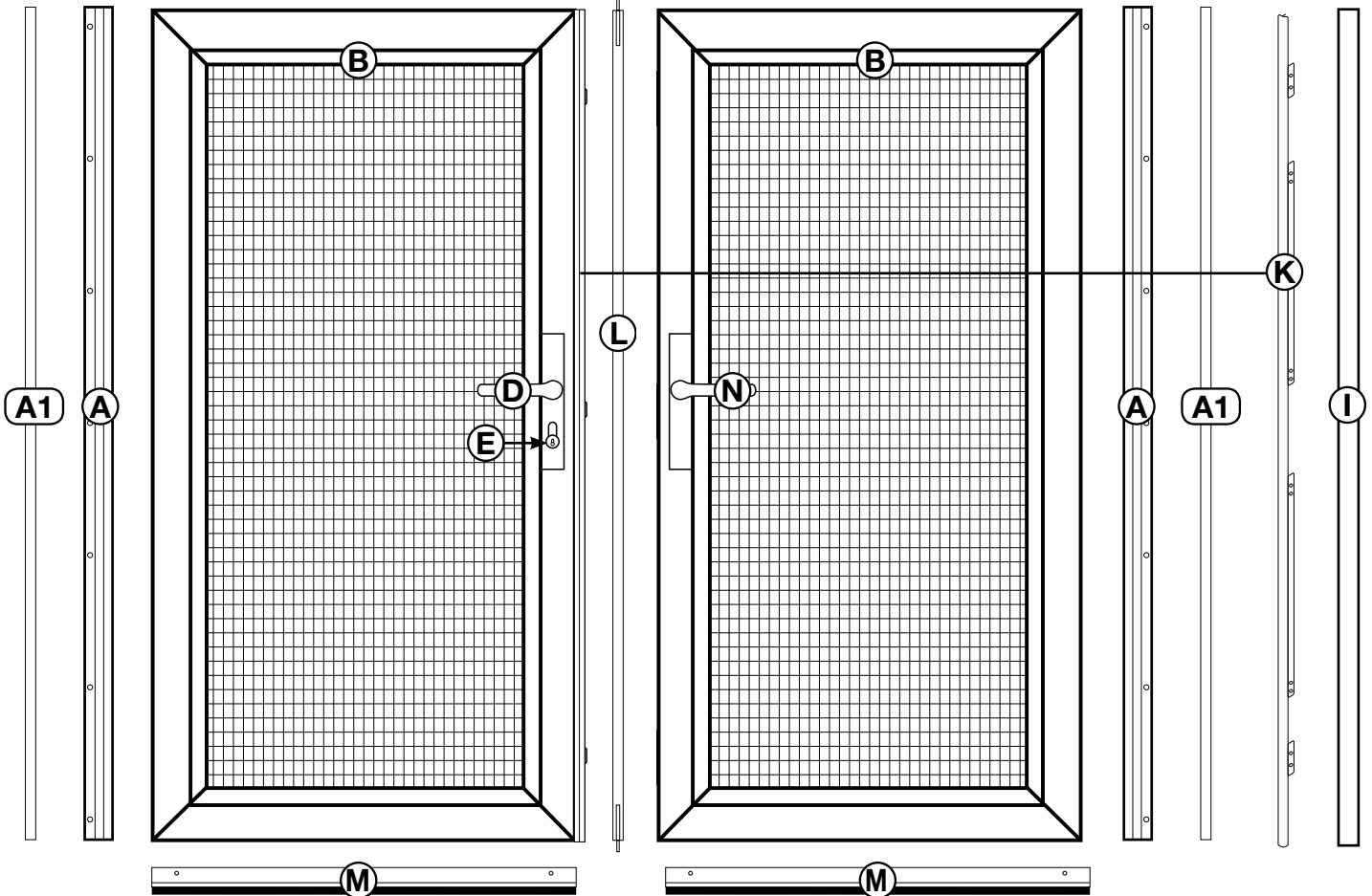
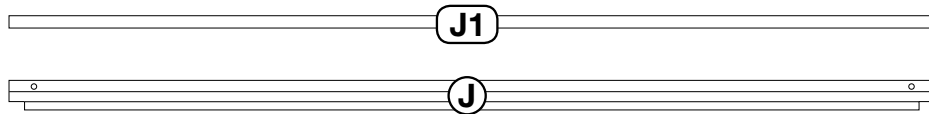
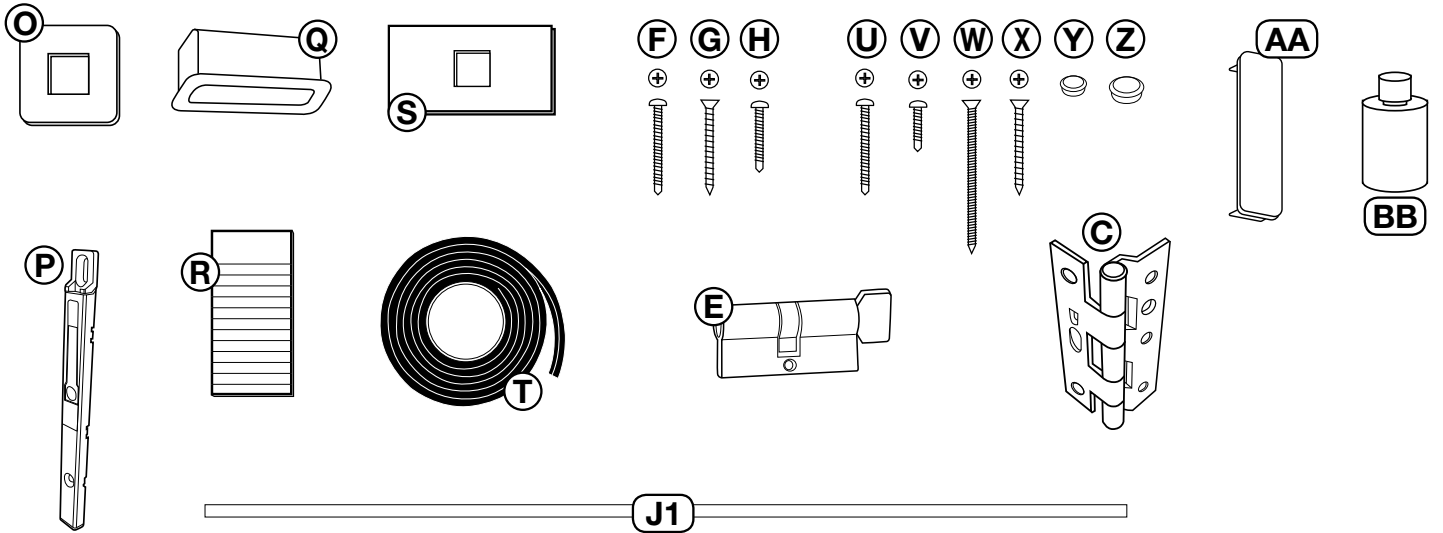
DOOR BOXES (2)

- A) Hinge-side jambs (2)
- A1) Hinge-side snap covers (2)
- B) Security screen doors (2)
- C) Hinges (6)
- D) Locking handles (2)
- E) Lock cylinder (1)
- F) #8x1" pan head screws (20 pcs.)
- G) #8x1" flat-head screws (14 pcs.)
- H) #14x3/4" pan head screws (2)
- I) Throw protector (do not remove until step 7)

DOUBLE DOOR KIT

PARTS, HARDWARE & FASTENERS:

- | | | |
|--------------------------------|--------------------------------|---|
| J) Top header jamb | P) Shoot bolts (2) | U) #8x1" pan head screws (5 pcs.) |
| J1) Top header jamb snap cover | Q) Shoot bolt receiver cup (1) | V) #6 x5/8" pan head screws (white - 20 pcs.) |
| K) Latch guard | R) Shoot bolt covers (2) | W) #6x2" temporary dry wall screws (4 pcs) |
| L) Astragal | S) Shoot bolt plate (1) | X) #10x1" flat-head screws (6) |
| M) Bug sweeps (2) | T) Weather stripping | Y) Plastic plugs (white - 6 pcs.) |
| N) Dummy handles (2) | | Z) Screw cover caps (white - 2 pcs) |
| O) Dummy handle blocks (2) | | AA) Latch hole plug (1) |
| | | BB) Touch-up paint |



1 Identify and prepare mounting surface

Inspect Your Entryway for Obstructions

Check for any obstructions above and around your entryway that may prevent the outward swing of your new security door, and/or its installation, such as:

- Light fixtures
- Low overhang
- Door bell
- Trees, bushes, or hanging plants

Determine Type and Readiness of Mounting Surface

Your security door will require a minimum mounting surface of 1" on both sides of a corner of the trim or jamb above and on both sides of your entry door. Review diagrams at right and determine which one most resembles the trim around the entry door to which you will mount your security door.

Measure Your Opening

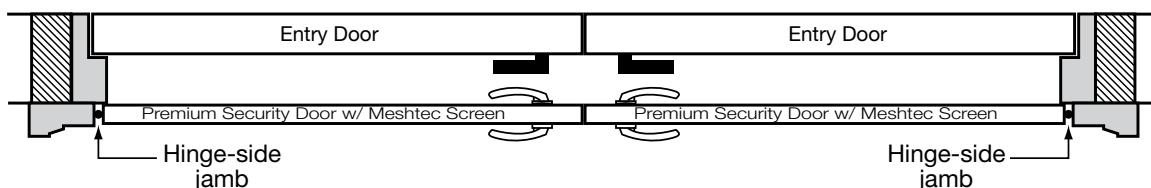
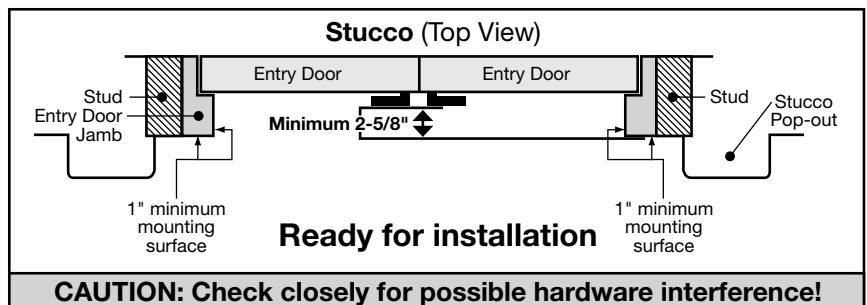
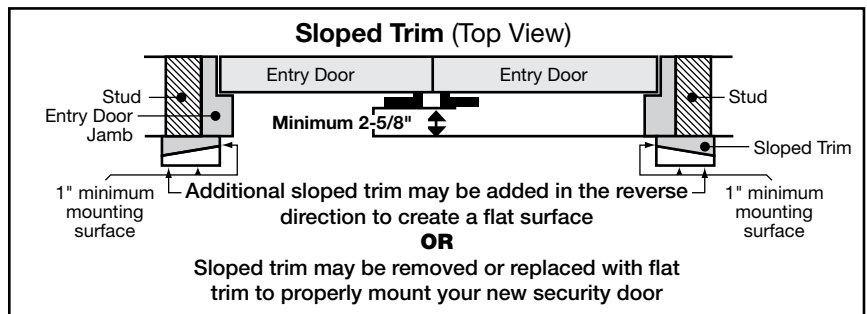
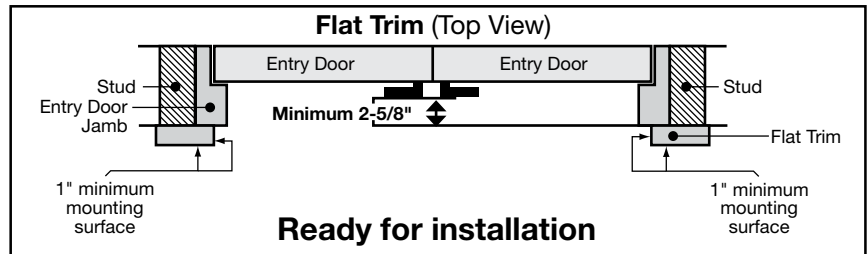
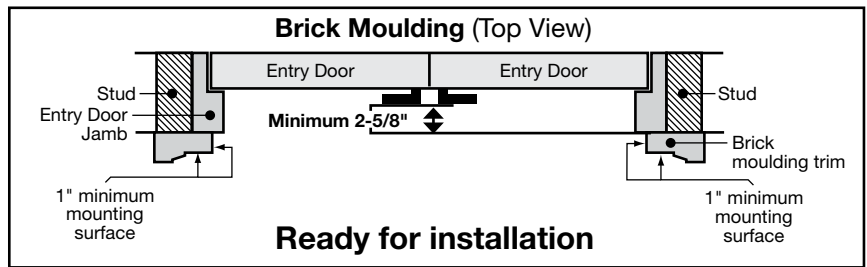
Measure between the edges of the left and right mounting surfaces for opening width. Measure between the edge of the upper mounting surface and the existing threshold for opening height. Use the following chart and these measurements to be sure the security door will fit your opening.

Security Door Size	Fits Door Opening Sizes	
	Width (W)	Height (H)
64" x 80"	63 3/4" - 64 3/8"	80" - 80 7/8"
72" x 80"	71 3/4" - 72 3/8"	

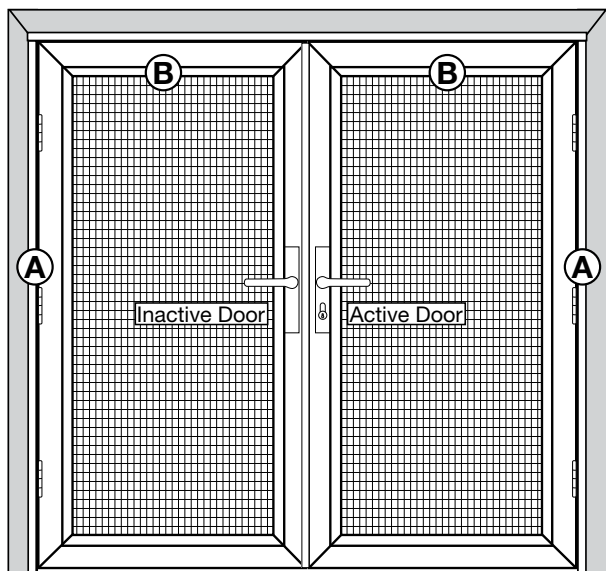
If the opening identified does not fall within the fit range, you can check to see if there is another mounting surface in your entryway that will work, build your mounting surface out using stop or similar trim, or remove and reconfigure your trim to fall within the fit range.

Check for Hardware Interference

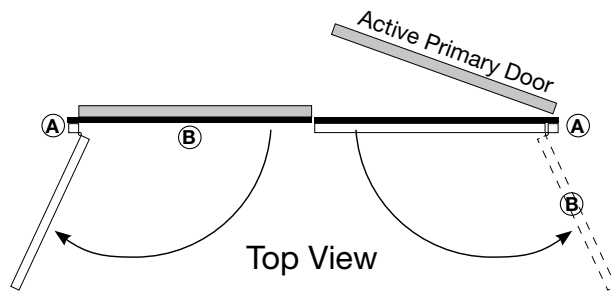
Measure the depth from the corner of your mounting surface to your existing entry door hardware. If this measurement is 2-5/8" or greater there is no potential for hardware interference. If the measurement is less than 2-5/8", measure from the edge of the mounting surface on top of the door to the top and bottom edge of the part of your existing hardware that intrudes into the 2-5/8" clearance. If either of these two measurements falls between 40-1/4" and 44-1/4", the security door and existing door hardware will interfere with each other. You can either build your mounting surface out to create the clearance required or mount your security door with an opposite swing to your main entry door.



2 Determine active and inactive doors



The **active security door** should be on the same side as the active primary door on the house. Both security doors will be operational. The inactive security door, however, will be held stationary by shoot bolts (**P**) at the top and bottom edges of the door. The shoot bolts can be retracted to open the inactive door.

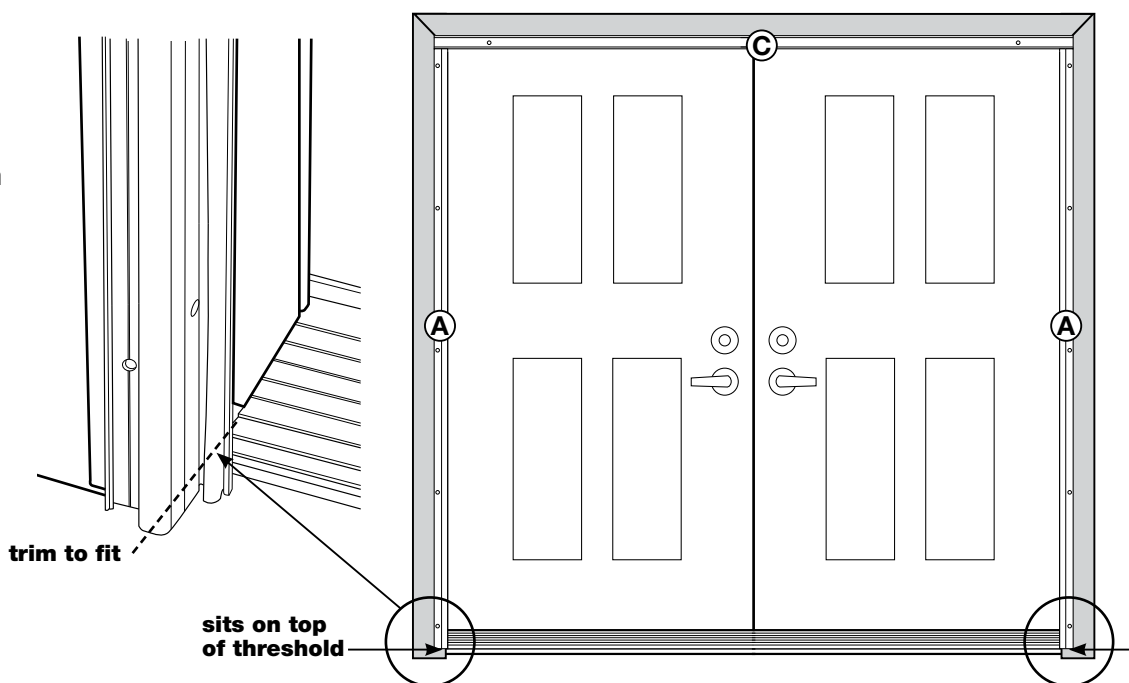


3 Test fit frame and trim hinge-side jambs

Place the top header jamb (**I - double door kit package**) and hinge-side jamb (**A - door package 1**) into position. If the hinge-side jamb is too long, mark with a pencil at the bottom (the jamb should sit on top of the threshold). Slide weather stripping up just above cut mark and trim jamb to length if necessary.

Follow same test fit and measurement procedure for the 2nd hinge-side jamb (**A - door package 2**). Trim to length if necessary.

When jambs are proper length slide the weather stripping flush to uncut end and trim excess from the cut end.

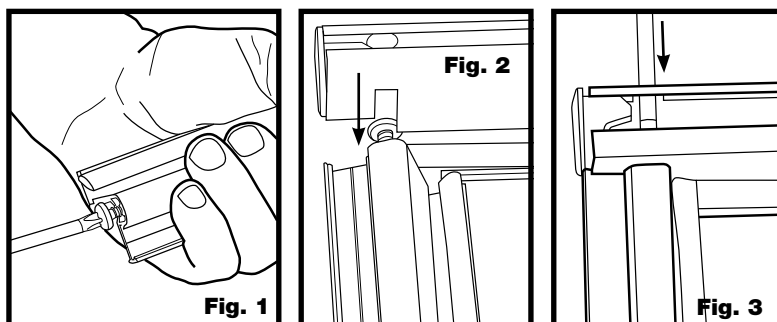


4 Assemble 3-piece frame

On a clean flat surface (suggest cardboard or moving blanket to protect paint finish) place the top header jamb (**J**) and two hinge-side jambs (**A**) into position. Assemble the frame using #14x3/4" screws (**H**). Install screw at the top of each hinge-side jamb allowing the screw to protrude 1/8" (**Fig. 1**).

Attach the top header jamb (**J**) to each side-jamb (**A**) by sliding the screw into the slots on the top header jamb (**Fig. 2**). Using a phillips-head screw driver tighten the screws the rest of the way (**Fig. 3**). Install screw cover caps (**Z**) to cover open holes on top of header jamb.

If necessary trim weather stripping to length so it is a flush fit at each top corner of the frame.

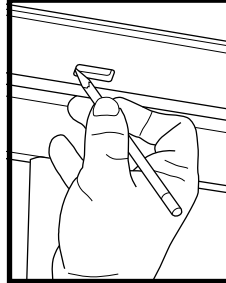


5 Install 3-piece frame

Place the assembled 3-piece frame inside the opening. Install two temporary mounting screws (#6x2" temporary drywall screws **(W)**) hinge-side jamb **(A)**, one at the top and one at the bottom. Install one (#6x2" temporary drywall screw **(W)**) in the center of the top header jamb **(J)**.

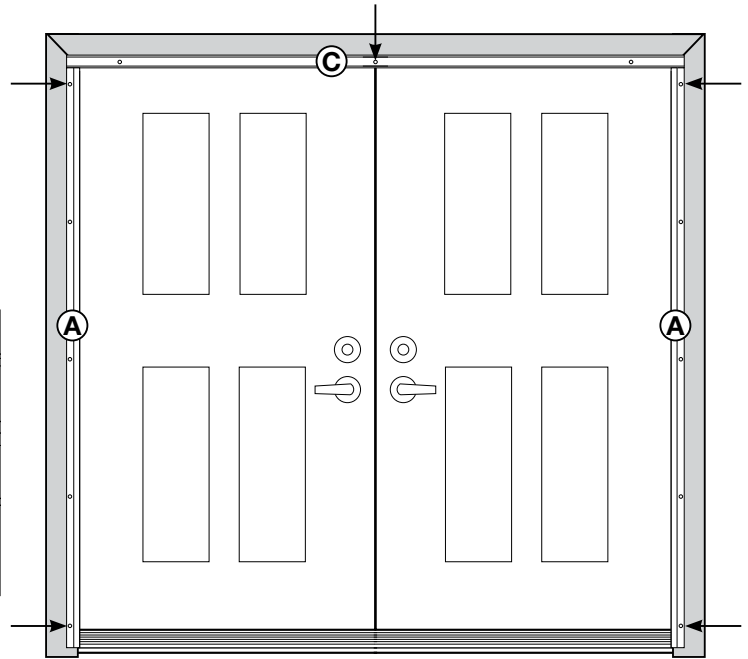
These screws are inserted to temporarily hold the jambs in place. **Do NOT install permanent screws until the door is completely up and working properly.**

Check the shoot bolt receiving hole in the top header jamb **(J)**. You will need a depth of 1/2" to install the shoot bolt receiver cup **(Q)** later in the installation. If there is obstruction, mark the receiving hole, remove the temporary screws and remove the 3-piece frame to expose the mark made on the top mounting surface.

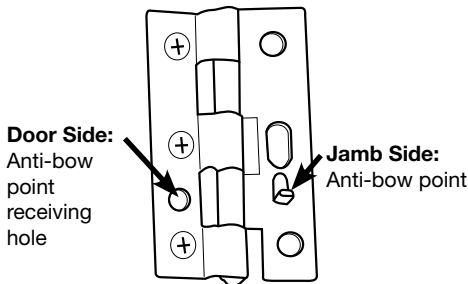


Use a 1/2" wood chisel or spade drill bit (1/2") to clean the shoot bolt area out to a depth of 1/2".

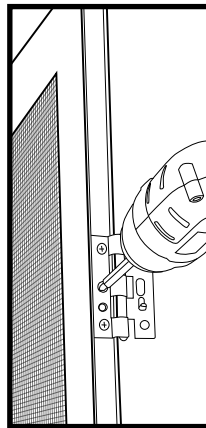
Re-install the assembled frame in the opening using temporary screws. **Do NOT install permanent screws.**



6 Attach hinges to doors



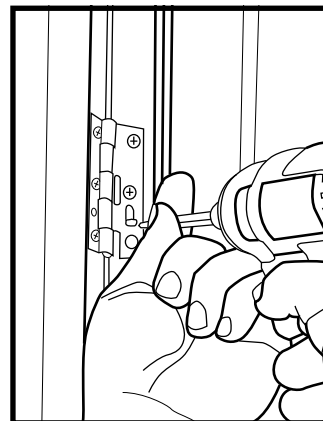
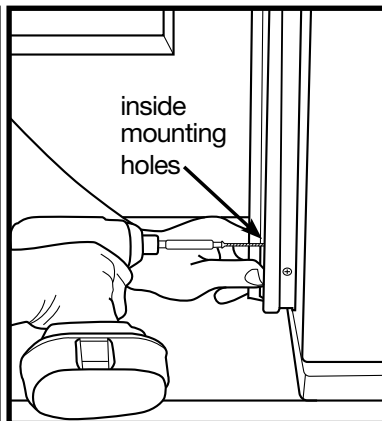
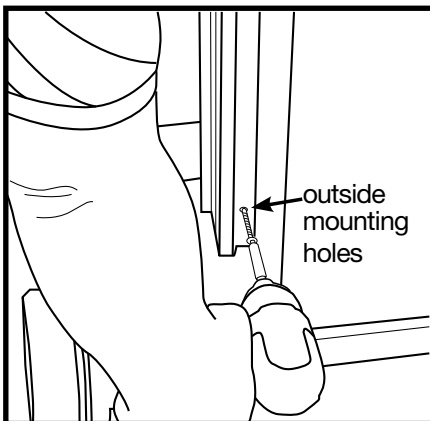
Note: The Anti-bow point receiving hole lines up with the pre-drilled hole on the door.



Place hinge **(C)** over pre-drilled holes on the door. The flat part of the hinge attaches to the door. The barrel of the hinge should always be on the outside of the door. Use screws provided with the hinges and attach all 3 hinges to each door.

CAUTION: Do NOT lay door on it's side so that it rests on the 3-point lock throws. This will cause the system to offset and you will need to remove and reset the locking system (see step 18).

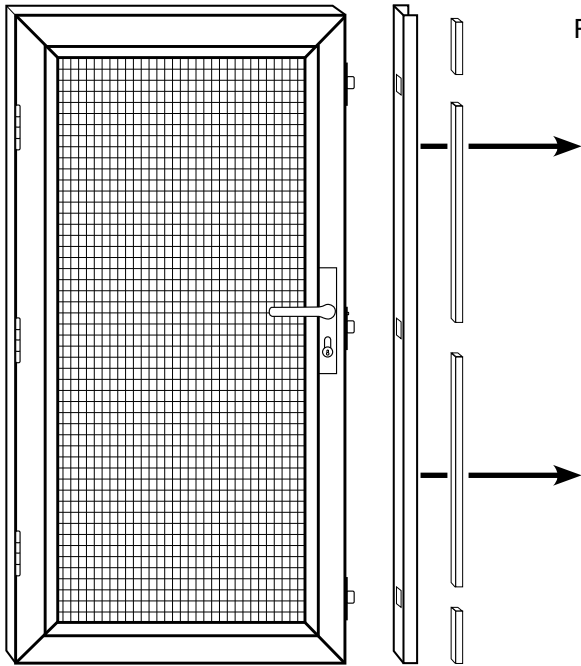
7 Hang door panels



Add a temporary screw (#6x2" temporary drywall screws **(W)**) in the outside and inside mounting holes at each hinge.

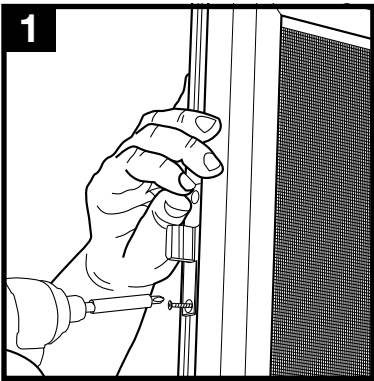
Have a helper hold the door in place. It is important the door is held in proper alignment so the first mounting screw in each hinge is driven straight into the door panel. It may help to use blocks or similar props to assist in keeping the door properly aligned. Attach all 3 hinges to the frame using two #8x1" flat-head screws **(G)** in each hinge.

8 Remove throw protectors

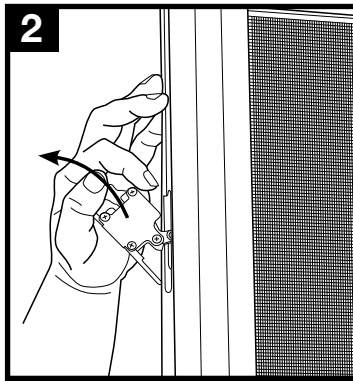


Remove tape and discard throw protectors (I).

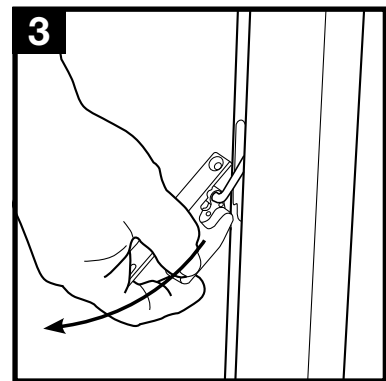
9 Prepare inactive door



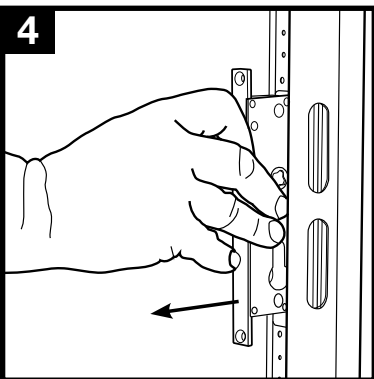
1 Remove the mounting screws on all three locks of the inactive door.



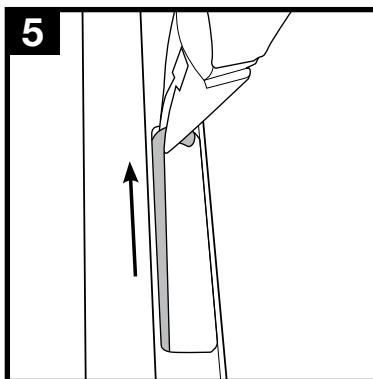
2 Lift the top lock up and out of the edge of the door and un-attach the rod hooked to the rear of the latch assembly.



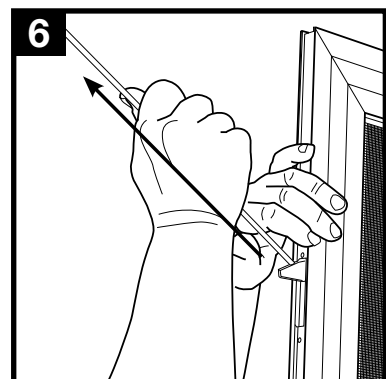
3 Pull the bottom lock down and out.



4 Remove the two screws in the mortise gear and center lock and pull out the assembly.

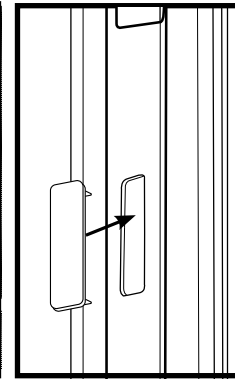
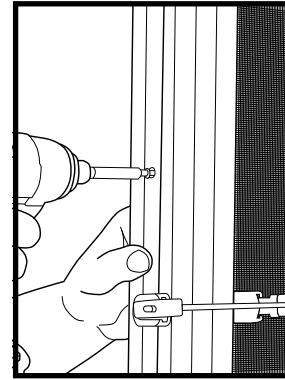
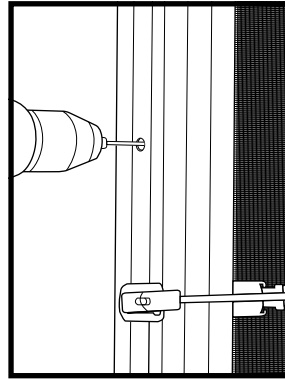
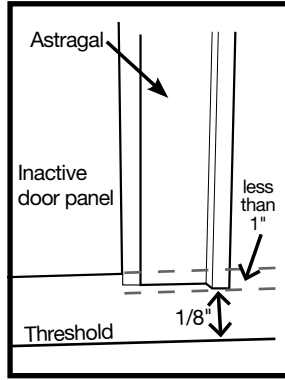
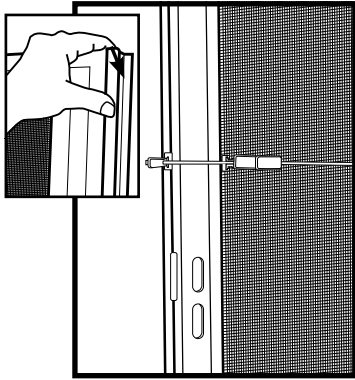


5 Using needle-nose pliers, grasp the rod assembly through the mortise gear in the center lock opening.



6 Grab the rod assembly through the top lock opening and pull the entire assembly out.

10 Install astragal on inactive door



Place the astragal (**L**) on inactive door so the top edge is even with the top edge of the door panel. Clamp in place.

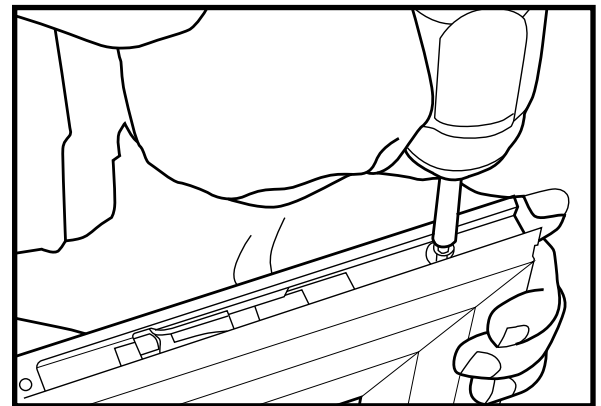
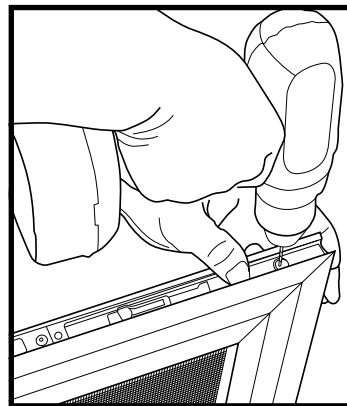
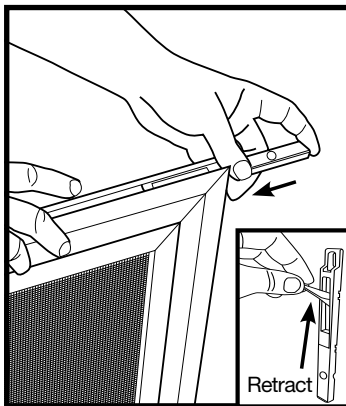
There should be 1/8" gap between the bottom of the astragal (**L**) and the threshold or stoop. Do NOT extend the astragal more than 1" past the bottom of the door panel. Mark and remove astragal to trim if necessary.

Place astragal (**L**) back on inactive door so the top edge is even with the top edge of the door panel. Clamp in place. Pre-drill mounting holes in the inactive door panel through the 4 mounting holes in the astragal using a 3/32" drill bit.

Attach the astragal (**L**) to the inactive door using #10x1" flat-head screws (**X**).

Install latch hole plug (**AA**) into unused lower most center latch hole.

11 Install top shoot bolt on inactive door

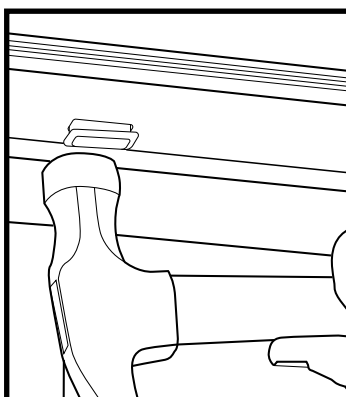


Retract the shoot bolt (**P**) using the lever indicated by the red dot. With door panel laying on hinge-side slide the shoot bolt in the top of the astragal so it is flush with the top edge of the astragal (**L**).

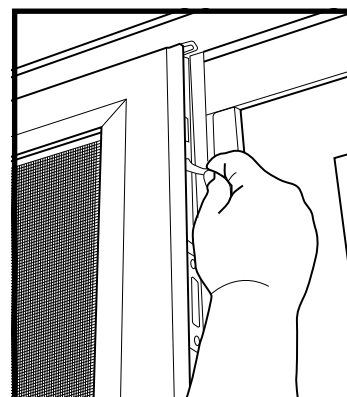
Utilizing the mounting hole in the shoot bolt (**P**) as a guide, use a 7/64" drill bit to pre-drill the exposed top mounting hole in the astragal (**L**).

Install top screw (#8x1" flat-head screw (**G**)). Then deploy the shoot bolt lever to expose the bottom mounting hole. Use a 7/64" drill bit to pre-drill the bottom mounting hole. Finish attaching shoot bolt (**P**) to astragal (**L**) using a #8x1" flat-head screw (**G**).

12 Install top shoot bolt receiver cup

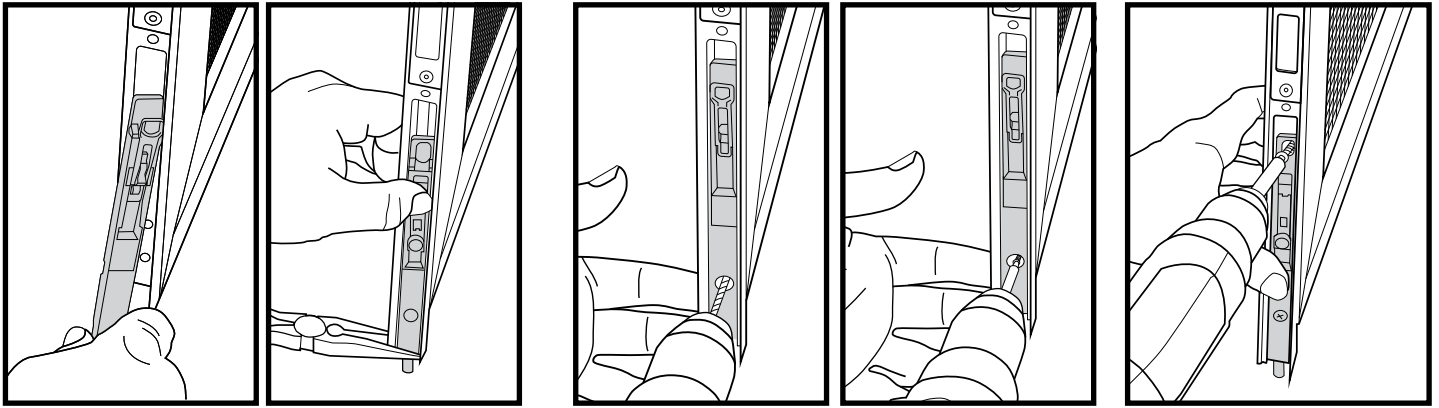


Install the top shoot bolt receiver cup (**Q**) into the top header jamb (**J**). Using a hammer or rubber mallet, gently tap the shoot bolt receiver cup into the pre-cut hole in the top header jamb until flush.



Close the inactive door and deploy the shoot bolt (**P**) to test for proper fit.

13 Install bottom shoot bolt on inactive door

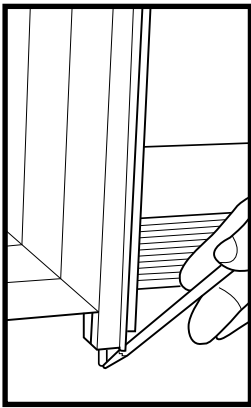


Slide the shoot bolt (**P**) into place, inserting the inside edge first and rotating into position using needle-nose pliers. Retract the shoot bolt using the lever indicated by the red dot to expose the bottom mounting hole.

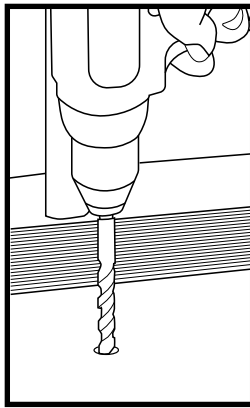
Be sure the shoot bolt (**P**) is flush with the bottom of the astragal (**L**). Pre-drill the exposed mounting hole with a 7/64" drill bit. Attach shoot bolt with #8x1" flat-head screw (**G**).

Deploy the shoot bolt lever to expose the top mounting hole. Pre-drill the exposed top mounting hole using a 7/64" drill bit. Complete attaching shoot bolt (**P**) to astragal (**L**) with #8x1" flat-head screw (**G**).

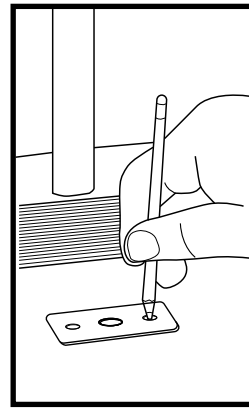
14 Install bottom shoot bolt plate



With top and bottom shoot bolts (**P**) retracted, close the inactive door. Deploy the top shoot bolt, then deploy the bottom shoot bolt until it touches the stoop or threshold. Mark the stoop or threshold where the shoot bolt touches.

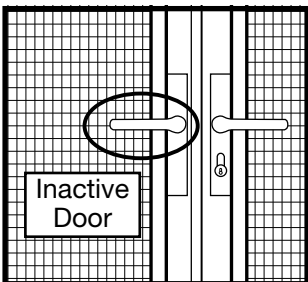


Using a 1/2" drill bit, create a 1/2" deep hole for shoot bolt (**P**) in stoop or threshold.

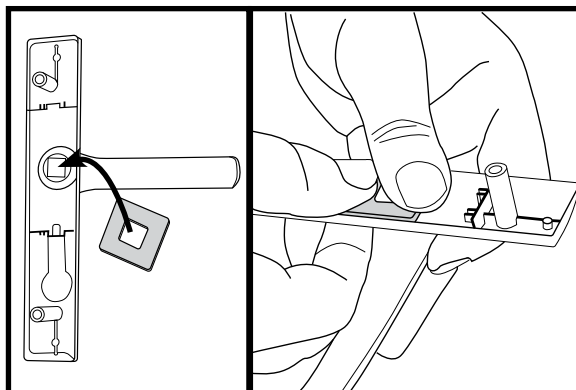


Place shoot bolt plate (**S**) over the hole, close the inactive door, and use the shoot bolt (**P**) to get proper alignment. Retract shoot bolts, open door and mark the mounting holes in the stoop or threshold. Using a 1/8" drill bit, pre-drill holes and attach shoot bolt plate with #8x1" flat-head screws (**G**).

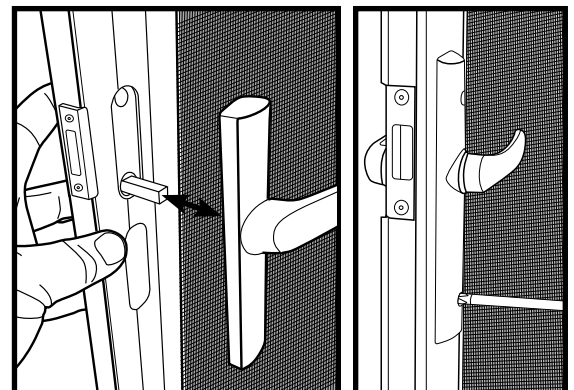
15 Install inactive door dummy handle



Make sure to orient handles in desired direction depending on right or left location of inactive door.



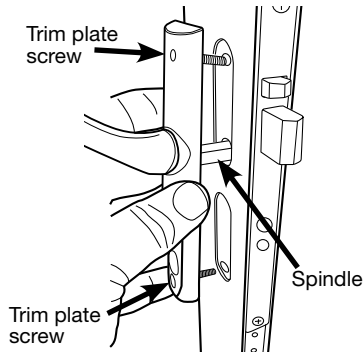
Install dummy handle block (**O**) on the back of each dummy handle (**N**). Tap block into place as needed so it is flush with the trim plate.



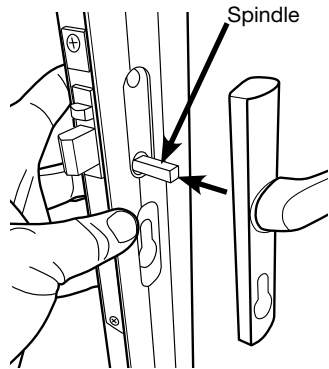
Insert dummy handle (**N**) with spindle through the interior of the active door and into the opposite dummy handle. Attach the handles using two 1" fine thread bolts included with the handle set. Leave each screw loose by 1/2 turn. They will be tightened in step 16.

16 Install active door handle and lockset

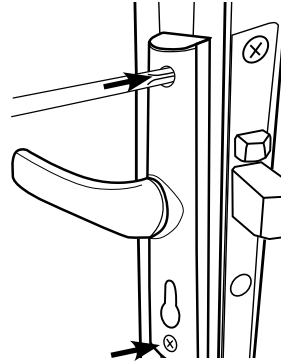
1) Start on the **interior** side of the door. With the handle **(D)** facing toward the screen, insert the spindle and mounting screws through the mortise gear in the door panel.



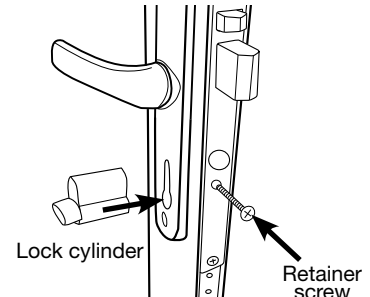
2) Move to the exterior of the active door. With the handle pointing toward the active door panel hinges, align the openings on the inside of the other handle **(D)** with the spindle and 2 mounting screws and position the handle against the door frame.



3) While holding both handle trim plates in place, tighten the mounting screws and then back off 2 turns. These screws will be tightened after the lock cylinder is installed.



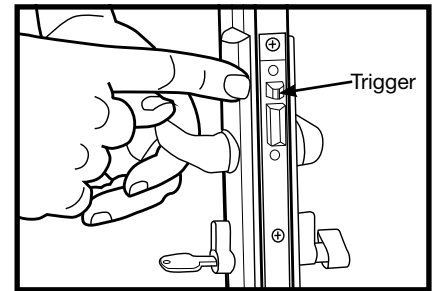
4) From the inside of the door, insert the lock cylinder **(E)** into the door through the trim plate. Using a Phillips-head screw driver, tighten the retainer screw until snug. Do **NOT** over-tighten. Tighten the two handle mounting screws until snug.



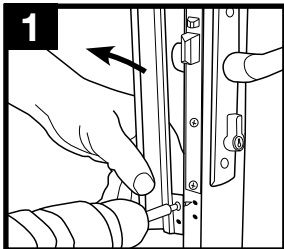
17 Test locking mechanism

With the door open, retract the 3-point locking mechanism using the key or the thumb turn. Keep the door **OPEN** and test the mechanism by first depressing the 3-point locking system trigger, then deploying the locks using the key or thumb turn. If the locks will not deploy, the system has been offset and must be manually reset..

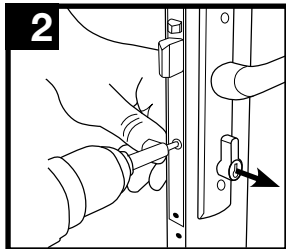
If test is successful, install screw cover caps included with door handles on interior and exterior sides of door handles. If not, proceed to step 18 before installing screw cover caps.



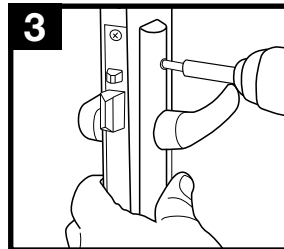
18 Reset locking mechanism IF REQUIRED



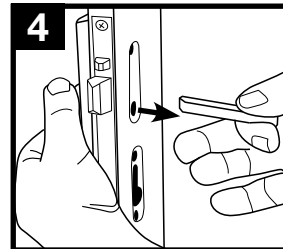
1 Remove latch guard, if installed (4 mounting screws, 2 top, 2 bottom, on edge of door frame).



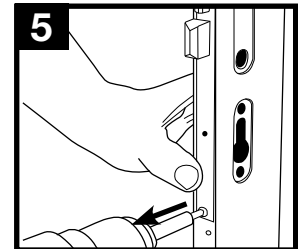
2 Remove cylinder by removing set screw through edge of door panel and pulling cylinder out of the door.



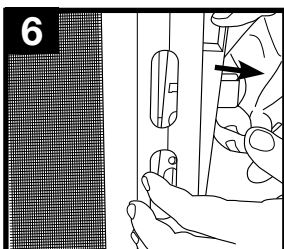
3 Remove handleset trim plates (2 mounting screws) – hold handles so they do not drop to floor.



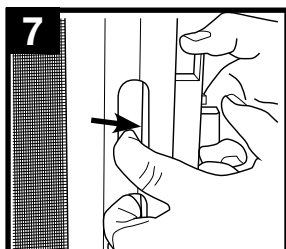
4 Remove handles and spindle.



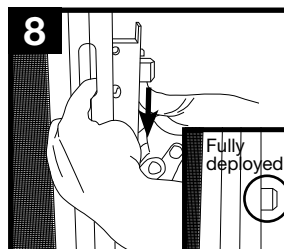
5 Remove the 2 mortise lock mounting screws in edge of door panel.



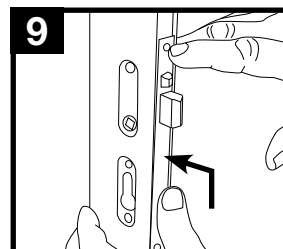
6 Grab main throw with one hand and pull mortise lock part way out of edge of door.



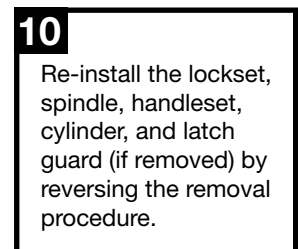
7 Place other hand **BEHIND** the black plastic linkage connector and keep pressure on it so that it stays connected to the mortise lock as you pull the mortise lock until it is almost out of the door.



8 With one hand still keeping pressure on the connector so it remains attached to the lock, use the other hand to move the lockset down. Listen for it to click, the top and bottom lock throws will fully deploy.



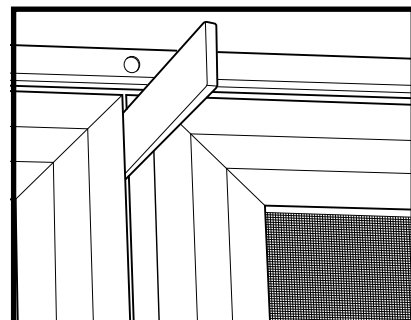
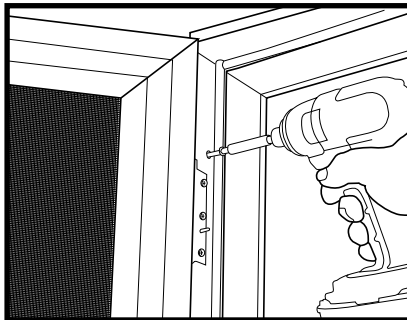
9 Ensuring the linkage connector stays attached to the back of the lockset, raise and slide the lockset back into the door panel.



10 Re-install the lockset, spindle, handleset, cylinder, and latch guard (if removed) by reversing the removal procedure.

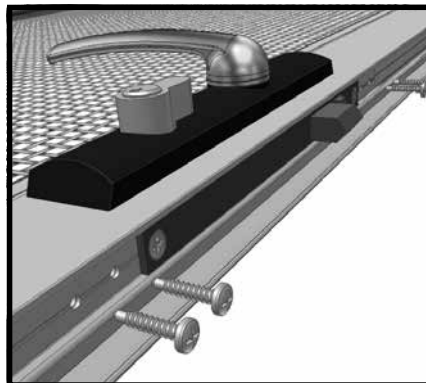
19 Install permanent mounting screws (inner)

Pre-drill through inner mounting holes using a 3/32" drill bit. Install permanent screws (#8x1" pan-head screws **(U)**) into the inside mounting holes. As you install each screw check that the 1/8" reveal is maintained between the doors and that the 3-point locking trigger will engage. You may need to shim between the doors if tightening or loosening screws does not maintain the reveal and 3-point lock trigger does not engage.



20 Install latch guard

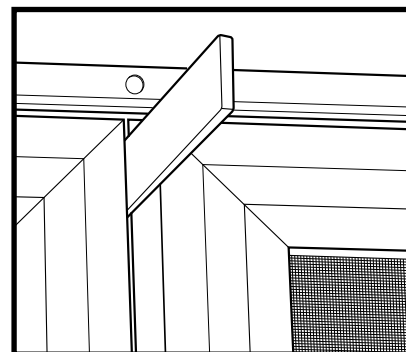
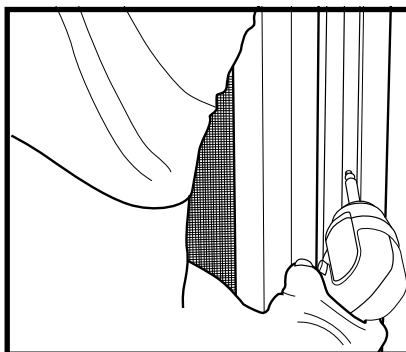
Line the latch guard **(K)** provided in the double door kit up to the top of the astragal **(L)**. Mark and trim flush at the bottom of the door panel. Attach the latch guard to the door panel **(B)** using five #6x5/8" pan head screws **(V)**.



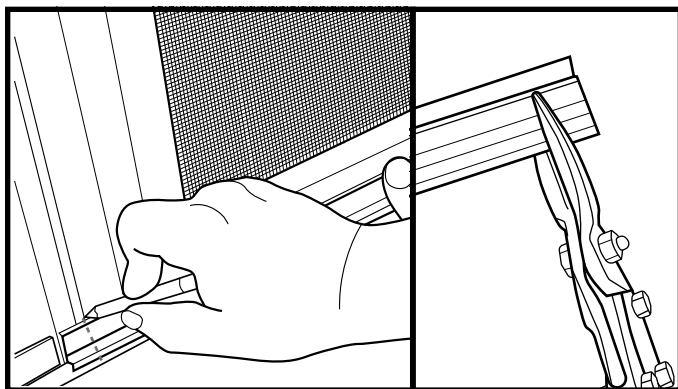
21 Install permanent mounting screws (outer)

Pre-drill through all outer mounting holes using a 3/32" drill bit. Install permanent mounting screws (#8x1" pan-head screws **(F)**).

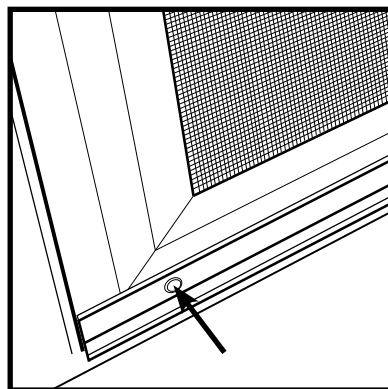
You may need to shim between the doors while tightening the screws to maintain the reveal between the doors and ensure proper space for the 3-point lock trigger to engage.



22 Install bug sweeps



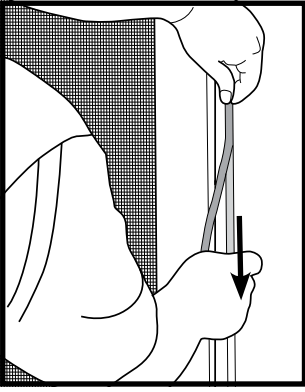
With both doors closed, position a bug sweep **(M)** on the bottom of the active door against the hinge-side jamb. Mark where the active door meets the edge of the astragal mounted to the passive door and trim using tin snips.



Decide whether to place sweeps on back or front of door panels based on the configuration of your threshold. Place trimmed, active door bug sweep **(M)** against active door and adjust up or down until the bottom of the sweep rests on the threshold. Attach bug sweeps using #6x5/8" pan head screws **(V)**.

Install plastic plugs **(Y)** over mounting holes.

23 Install astragal weather stripping

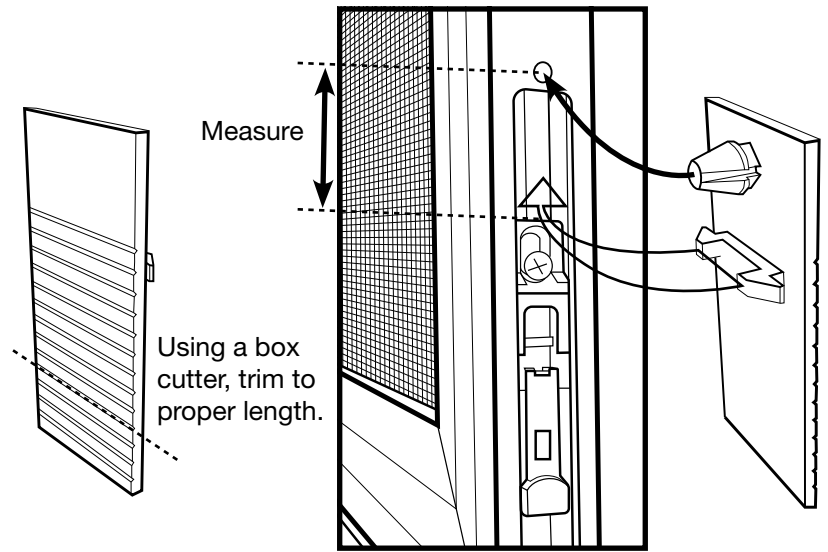


Install weather stripping (**T**) to the full length of the stop leg of the astragal (**L**) (where the active door closes against the astragal). Start at the top, remove approximately 6 inches of the protective backing at a time and adhere to the astragal. Slowly and carefully work your way down the full length of the door. Trim at the bottom as needed.

24 Install shoot bolt covers



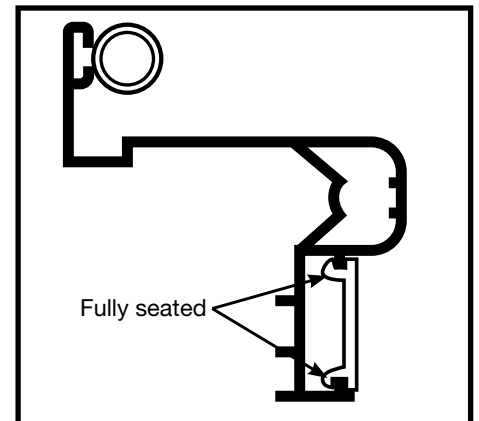
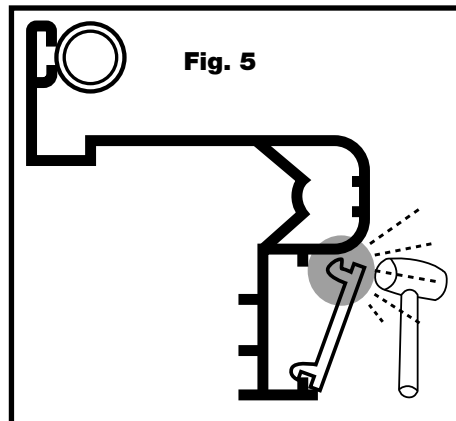
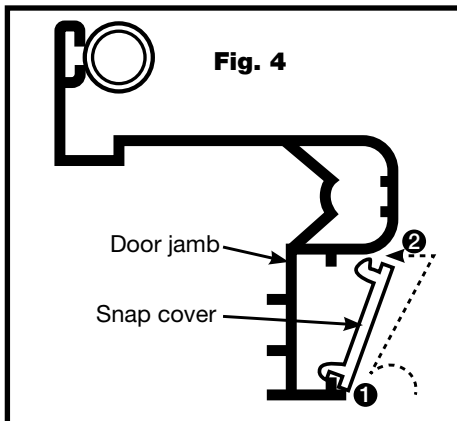
Install the shoot bolt covers (**R**) in the side of the astragal (**L**) to cover the internal mechanism of the shoot bolts.



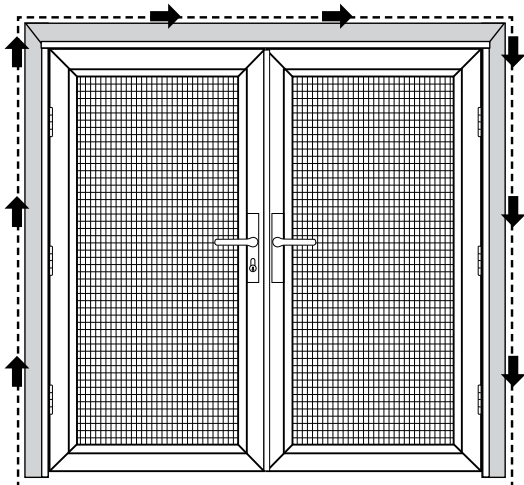
25 Install snap covers

Place the snap cover (**A1**) in the first hinge-side jamb (**Fig. 4, step 1**). Using a rubber mallet, hit on the side of snap cover seen in (**Fig. 5**) to securely snap cover into place. Once snap cover is secured, hold a wood block over the length of the snap cover and hit with mallet to smooth any irregularities in the snap cover surface.

Repeat process for the second hinge-side jamb (**A1**) and top header (**J1**) snap covers.



Final touch-up suggestions



① **Caulk (not included)**
Caulk around the outside of the security door jamb frame, using paintable caulk, and paint to the desired color.

② **White Grease Lubricant (not included)**
Use white grease to lubricate the hinges of your new security door.

Care and maintenance

Over time, airborne dust, dirt, and impurities can accumulate, which will cause visual defects to your Meshtec screen and, if not regularly and properly removed, can lead to further damage, staining, and corrosion. Your cleaning schedule depends upon your environment:

ENVIRONMENT	DESCRIPTION	CLEANING SCHEDULE
Mild	Inland, rural, and away from industry and urban activity	every 6 months
Moderate	Urban/suburban, inland, and away from heavy industry	every 3 months
Extreme	Urban/suburban, coastal (within 25 miles), or near heavy industry	every 2-4 weeks

Thoroughly wash the screen and door frame using a soft cloth, mild soap, and water. Take care to avoid exposing handles, main lock, and 3-point locks to excessive amounts of water. Using a dry, soft cloth, remove any excess water when done. Pay particular attention to drying the screen to frame attachment area fully. Avoid using any sharp objects or abrasive materials on the door frame or screen. Use white grease to lubricate the hinges at each cleaning.

Warranty

Your Unique Home Designs security door with Meshtec Advanced Screen System is warranted against manufacturer defects under normal, residential use for the first 10 years you own the product, and terminates if you sell or otherwise transfer the product or the property upon which it was installed. An additional 5 years warranty protection is awarded (for 15 year total warranty) when the product is registered on-line at uniquehd.com/registration. Bug sweeps, weather-stripping, composite materials, and hardware included with or installed on the security door are covered for one year from date of purchase. Accessories fitted to the security door are not covered by this warranty, including but not limited to locks, handles, rollers, and closers. These accessories may be covered by warranties provided by the manufacturer or supplier of the products. Any problem caused by abuse, misuse, failure to follow care and maintenance instructions, adjustments due to settling of the structure that the product is mounted on, improper installation, or acts of God are not covered. Cutting parts not specified by the installation guide and parts drilled incorrectly are not included in this warranty. If manufacturer defects occur, Unique Home Designs will, at our discretion, either repair or replace the door. If your home is burglarized and entry was accomplished through a UHD security door, locked with the 3 point locking system, while this warranty is in effect, UHD will pay your insurance deductible up to \$1000 or replace, as applicable, the damaged UHD security door at no charge. Replacement items may vary in style due to changes in suppliers and product. Not all colors can be reproduced if colors have been discontinued. UHD is not responsible for any labor expense required to repair or replace the door. UHD is not responsible for securing the property while warranted items are being repaired or replaced.

To make a claim under this Warranty, send a brief written description of the problem, a picture of the claim, proof of purchase, and your contact information to: Unique Home Designs, 973 N. Colorado Street, Gilbert AZ. 85233
Attn.: Warranty Claims

"Meshtec" is the registered Trade Mark of Meshtec International Co., Ltd. ('MTC') in the United States and other various worldwide jurisdictions (including registrations pending) and may not be used without the prior written consent of MTC.

Extend Your Warranty!

When you register on-line at uniquehd.com/registration