

Shark[®]

Navigator[™]

Model
NV581



www.SharkClean.com



1.800.798.7398

Contents

Getting to Know Your Shark Navigator Powered Lift-Away.....	3
Assembly.....	4
Upright Cleaning.....	5
What Does the Brushroll Indicator Light Mean?.....	5
Above Floor Cleaning.....	6
Using the Dust-Away™ Hard Floor Attachment.....	7
Lift-Away Cleaning.....	7
Powered Lift-Away Cleaning.....	8
Maintenance.....	9
Emptying the Dust Cup.....	9
Cleaning the Filters.....	9
Checking For Blockages.....	10
Troubleshooting Guide.....	10

Thank you for
purchasing the **Shark
Navigator® Powered
Lift-Away™**.

TECHNICAL SPECIFICATIONS:

Voltage:	120V., 60Hz
Watts:	1140W
Amps:	9.5A

FIVE-YEAR (5) LIMITED WARRANTY

EURO-PRO Operating LLC warrants this product to be free from material defects and workmanship for a period of five (5) years from the date of purchase when utilized for normal household use, subject to the following conditions, exclusions and exceptions.

The liability of EURO-PRO Operating LLC is limited solely to the cost of the repair or replacement of the unit at our option. This Limited Warranty does not cover normal wear of parts and does not apply to any unit that has been tampered with or used for commercial purposes. This Limited Warranty does not cover damage caused by misuse, abuse, negligent handling or damage due to faulty packaging or mishandling in transit. This Limited Warranty does not cover damage or defects caused by or resulting from damages from shipping or repairs, service or alteration to the product or any of its parts, which have been performed by a repair person not authorized by EURO-PRO Operating LLC.

If your appliance fails to operate properly while in use under normal household conditions within the warranty period, you may return the complete appliance and accessories with proof of purchase and date, freight prepaid. For assistance with warranty service options or customer support, please call our customer care and product specialists at 1-800-798-7398 or visit our website at www.SharkClean.com.

If the appliance is found by EURO-PRO Operating LLC to be defective, in EURO-PRO Operating LLC's sole discretion, we will repair or replace it free of charge. Proof of purchase is required and a fee of \$19.95 will apply to cover the cost of return freight.*

Non-durable parts including, without limitation, filters, brushes and electrical parts which normally require replacement are specifically excluded from warranty.

This Limited Warranty is extended to the original purchaser of the unit and excludes all other legal, implied and/or conventional warranties. The responsibility of EURO-PRO Operating LLC if any, is limited to the specific obligations expressly assumed by it under the terms of this Limited Warranty. In no event is EURO-PRO Operating LLC liable for incidental or consequential damages to anyone of any nature whatsoever. Some states do not permit the exclusion or limitation of incidental or consequential damages, so the above may not apply to you.

This Limited Warranty gives you specific legal rights, and you may also have other rights which vary from state to state or province to province.

*IMPORTANT: Carefully pack item to avoid damage in shipping. Be sure to include proof of purchase date and to attach a tag to item before packing including your name, complete address and phone number with a note giving purchase information, model number and what you believe is the problem with the item. We recommend you insure the package (as damage in shipping is not covered by your warranty). Mark the outside of your package "ATTENTION CUSTOMER SERVICE".

Euro-Pro and Shark Navigator are registered trademarks of Euro-Pro Operating LLC. Lift-Away, Powered Lift-Away, and Dust-Away are trademarks of Euro-Pro Operating LLC.



IMPORTANT SAFEGUARDS

 **CAUTION: The motorized floor nozzle, wand, and handle contain electrical connections:**

- These are not serviceable parts.
- Do not use to vacuum any liquids.
- Do not immerse in water when cleaning.
- If handle/wand is damaged, discontinue use.

When using an electrical appliance, basic safety precautions should always be observed, including the following:

WARNING

TO REDUCE THE RISK OF FIRE, ELECTRIC SHOCK OR INJURY:

- 1 DO NOT use outdoors or on wet surfaces.
- 2 Unplug from electrical outlet when not in use and before servicing.
- 3 Inspect power cord or plug for any damage before use. DO NOT use vacuum cleaner with a damaged cord or plug.
- 4 If vacuum cleaner is not working as it should, or has been dropped, damaged, left outdoors, or dropped into water, return it to EURO-PRO Operating LLC for examination, repair, or adjustment.
- 5 The hose contains electrical wires. Do not use when damaged, cut or punctured.
- 6 DO NOT pull or carry vacuum cleaner by the cord or use the cord as a handle.
- 7 DO NOT unplug by pulling on cord; to unplug, grasp the plug, not the cord.
- 8 DO NOT handle plug or vacuum cleaner with wet hands.
- 9 DO NOT run the vacuum cleaner over the power cord, close a door on the cord, or pull cord around sharp corners.
- 10 The use of an extension cord is not recommended.
- 11 DO NOT leave vacuum cleaner when plugged in.
- 12 Keep cord away from heated surfaces.
- 13 Turn off all controls before plugging or unplugging the vacuum cleaner.
- 14 Store your vacuum cleaner with the power cord secured around the two cord hooks.

GENERAL USE

- 15 Use only as described in this manual.
- 16 DO NOT put any objects into openings. DO NOT use with any opening blocked; keep free of dust, lint, hair, and anything that may reduce air flow.
- 17 Keep your work area well lit.
- 18 Keep the vacuum cleaner moving over the carpet surface at all times to avoid damaging the carpet fibers.
- 19 DO NOT place vacuum cleaner on unstable surfaces such as chairs or tables.

- 20 DO NOT allow young children to operate the vacuum cleaner or use as a toy. Close attention is necessary when used near children.
- 21 DO NOT use without dust cup and/or filters in place.

HOSE ATTACHMENTS

- 22 DO NOT use if air flow is restricted; if the air paths or the motorized floor nozzle become blocked, turn the vacuum cleaner off and unplug from electrical outlet. Remove all obstructions before you turn on the unit again.
- 23 Keep the end of the hose and accessory openings away from face and body.
- 24 Keep cleaning tools and hose suction openings away from hair, face, fingers, uncovered feet, and loose clothing.
- 25 Only use manufacturer's recommended attachments.

DUST CUP/FILTERS/ACCESSORIES

Before turning on the vacuum:

- 26 Make sure all filters are thoroughly dry after routine cleaning.
- 27 Make sure dust cup and all filters are in place after routine maintenance.
- 28 Make sure accessories are free of blockages.
- 29 Only use filters and accessories provided by EURO-PRO Operating LLC. [Failure to do so will void the warranty.]

GENERAL CLEANING

- 30 DO NOT pick up large-sized objects.
- 31 DO NOT pick up hard or sharp objects such as glass, nails, screws, or coins that could damage the vacuum cleaner.
- 32 DO NOT use to pick up drywall dust.
- 33 DO NOT pick up smoking or burning objects such as hot coals, cigarette butts, fireplace ash, or matches.
- 34 DO NOT pick up flammable or combustible materials such as lighter fluid, gasoline, or kerosene or use vacuum in areas where they may be present.
- 35 DO NOT pick up toxic solutions such as chlorine bleach, ammonia, or drain cleaner.
- 36 DO NOT use in an enclosed space where vapors are present from paint, paint thinner, moth-proofing substances, flammable dust, or other explosive or toxic materials.
- 37 DO NOT vacuum up any liquids.
- 38 DO NOT immerse vacuum cleaner in water or other liquids.
- 39 DO NOT use outdoors or on wet surfaces; use only on dry surfaces.
- 40 Use extra care when cleaning on stairs.
- 41 Remove brushroll from unit before rinsing.

SAVE THESE INSTRUCTIONS

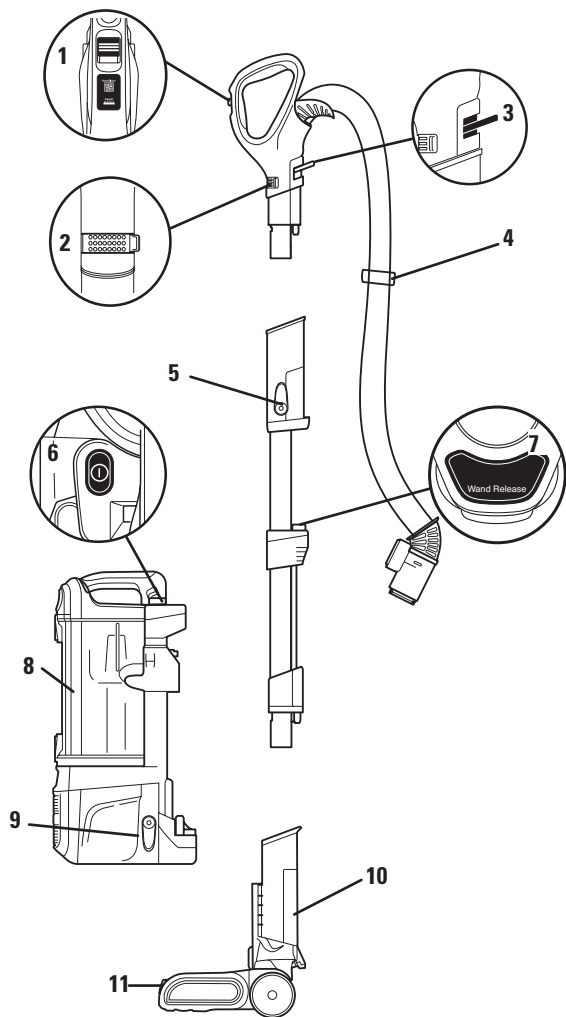
POLARIZED PLUG

To reduce the risk of electric shock, this vacuum cleaner has a polarized plug (one blade is wider than the other). As a safety feature, this plug will fit into a polarized outlet only one way. If the plug does not fit fully into the outlet, reverse the plug. If it still does not fit, contact a qualified electrician. DO NOT force into outlet or try to modify to fit.

FOR HOUSEHOLD USE ONLY

GETTING TO KNOW YOUR SHARK NAVIGATOR® POWERED LIFT-AWAY™

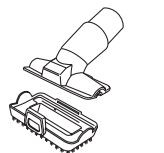
Nice to meet you! We'll be fast friends.



MAIN UNIT

- 1 Floor Selector
- 2 Suction Control
- 3 Handle Release
- 4 Hose Clip
- 5 Upper Cord Hook

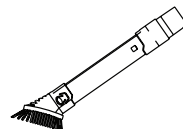
- 6 Power Button
- 7 Wand Release
- 8 Pod
- 9 Lower Cord Hook
- 10 Motorized Floor Nozzle
- 11 Headlights



Pet Multi-Tool

182FLI580

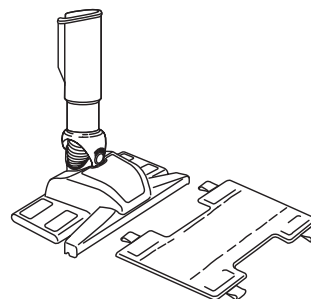
Two cleaning tools in one. The stiff bristle brush gets stuck-on debris off a multitude of surfaces. Remove the bristles to reveal an upholstery tool for removing stubborn pet hair from upholstery and more.



Duster Crevice

181FLI580

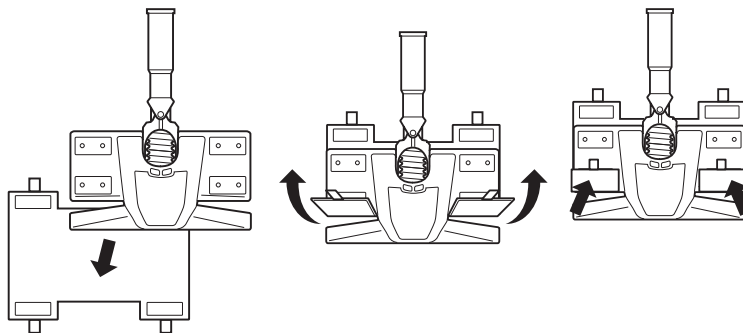
Two cleaning tools in one. The crevice tool gives you extended cleaning reach for small spaces, while the dusting brush cleans a multitude of surfaces.



Dust-Away™ Hard Floor Attachment & Microfiber Pad

XHFGN580

Durable enough for big crumbs and debris, but gentle enough for the most delicate dusting on hard wood and tile floors.



DUST-AWAY HARD FLOOR ATTACHMENT & MICROFIBER PAD

To attach microfiber pad slip two of the tabs between the suction nozzle and the duster base and attach them to the front fasteners on the base. Then pull the other two tabs tightly around to the back fasteners on the base. For best results, ensure that the pad is flat against the bottom surface and secured tightly.

NOTE: Use the Dust-Away Hard Floor Attachment to clean dry, bare floor surfaces only. Dust-Away Hard Floor Attachment should always be used with the microfiber pad.

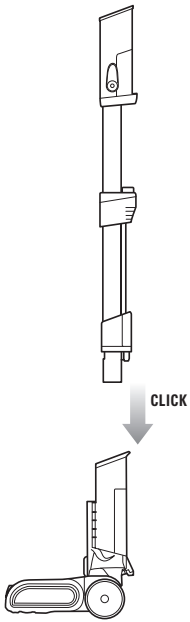
Looking for more accessories and replacement parts?
Check out www.SharkClean.com or call 1-800-798-7398.



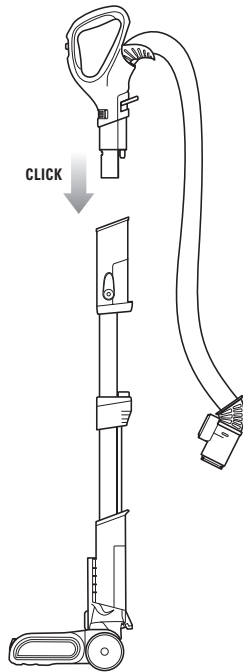
ASSEMBLY

A few quick clicks and you're ready to clean!

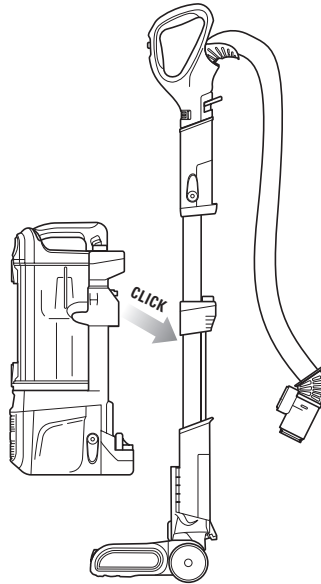
STEP 1



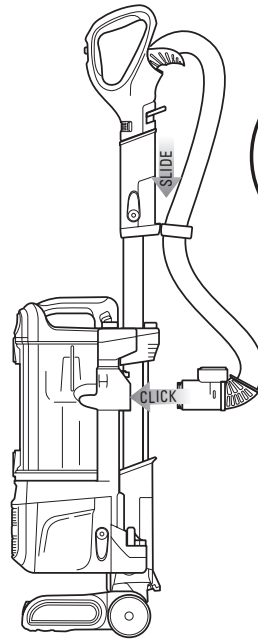
STEP 2



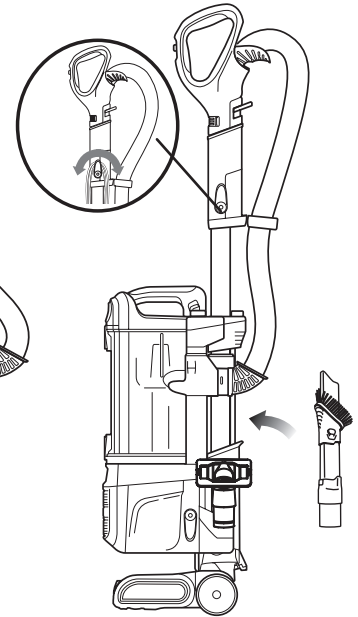
STEP 3



STEP 4



STEP 5



- 1 Place the motorized floor nozzle on the floor and insert the wand.
- 2 Insert the handle into the wand.

- 3 Slide the pod onto the wand.
- 4 Slide the hose clip into the notch at the back of the wand and push the hose into the inlet on the back of the pod.

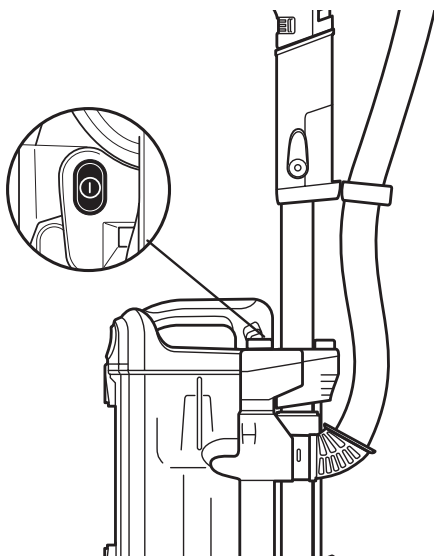
- 5 Insert the duster crevice and pet multi-tool into the accessory posts as shown.
- TIP:** For quick cord access, rotate upper hook down and remove cord. Rotate back for cord storage.

UPRIGHT CLEANING

Your hard floors and carpets will thank you.

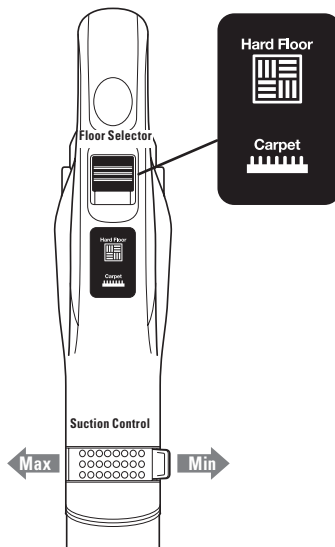
NOTE: DO NOT use to pick up drywall dust or fireplace ash.

STEP 1



- 1 Plug power cord into electrical outlet and press **POWER** button to turn vacuum on.

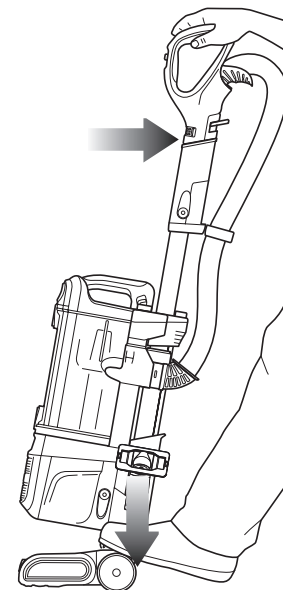
STEP 2



- 2 **For Hard Floor Cleaning**
Set Floor Selector to **Hard Floor** and Suction Control to **Max** for full suction or variable depending on user preference.
For Thick Carpet & Area Rugs Cleaning
Set Floor Selector to **Carpet** and Suction Control to **Min** for reduced suction or variable depending on user preference.
For Carpet Cleaning
Set Floor Selector to **Carpet** and Suction Control to **Max** for full suction or variable depending on user preference.

NOTE: For deep cleaning per ASTM F 608 (embedded dirt in carpets) please set to Carpet and Suction Control to Max

STEP 3



- 3 Place your left foot gently on the motorized floor nozzle and tilt the handle back to start cleaning.
NOTE: The brushroll will only spin when the floor selector is set to **CARPET** and the vacuum is reclined back.

WHAT DOES THE BRUSHROLL INDICATOR LIGHT MEAN?

- **Solid Green:** The brushroll is on and working as it should.
- **Solid Red:** There is a jam in the brushroll area. Turn your vacuum off and remove the blockage.
- ***Flashing Red:** The motorized floor nozzle is overheating. Turn your vacuum off and wait for it to cool down.
*See Troubleshooting section for further instructions.

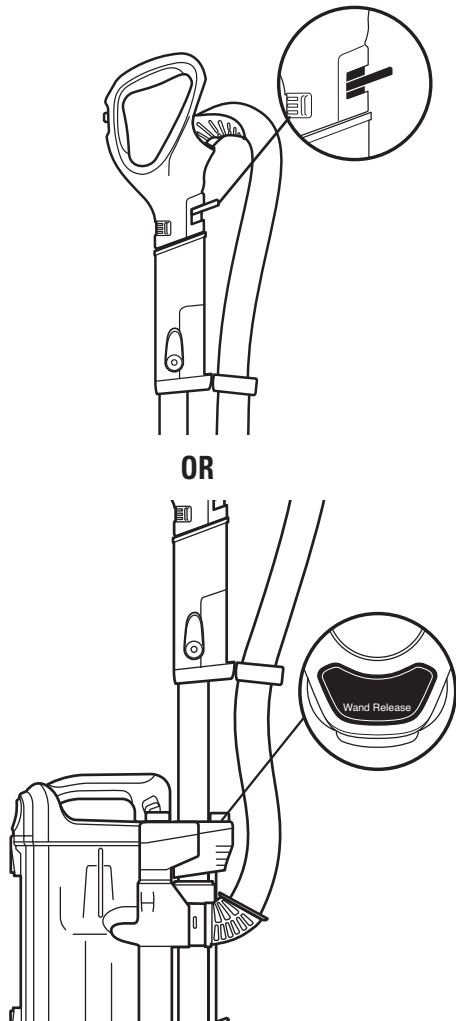


ABOVE FLOOR CLEANING

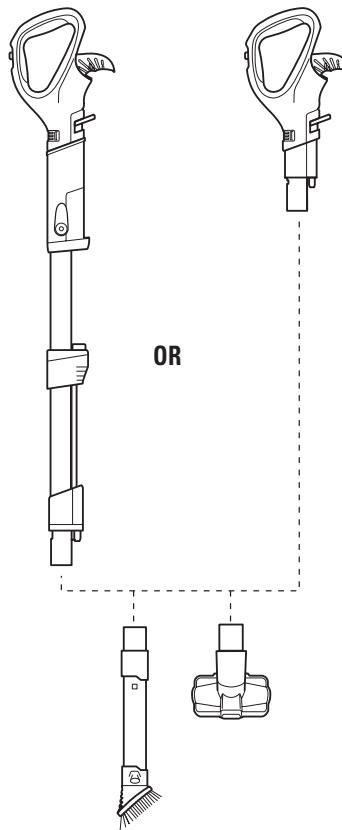
Crevices, baseboards, and upholstery beware.

NOTE: DO NOT use to pick up drywall dust or fireplace ash.

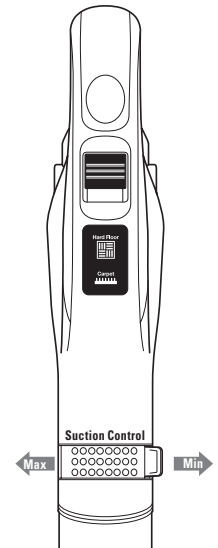
STEP 1



STEP 2



STEP 3



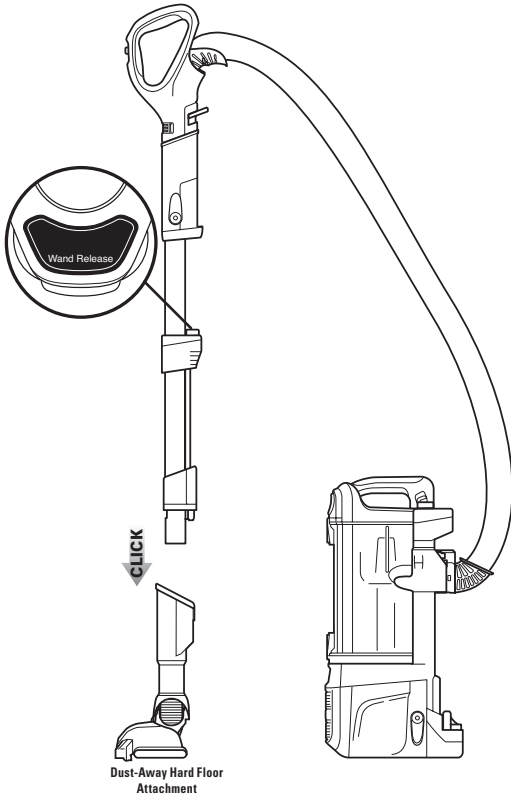
1 For above floor cleaning with the hose, press the wand or handle release (depending on the amount of reach required) then lift handle up.

2 Insert wand or handle directly into desired tool.

3 This unit is equipped with Suction Control to help when dusting delicate objects or drapery. Located at base of the handle, slide the Suction Control tab to change the amount of suction.

USING THE DUST-AWAY™ HARD FLOOR ATTACHMENT

Pick up debris and wipe away fine dust in one easy step.



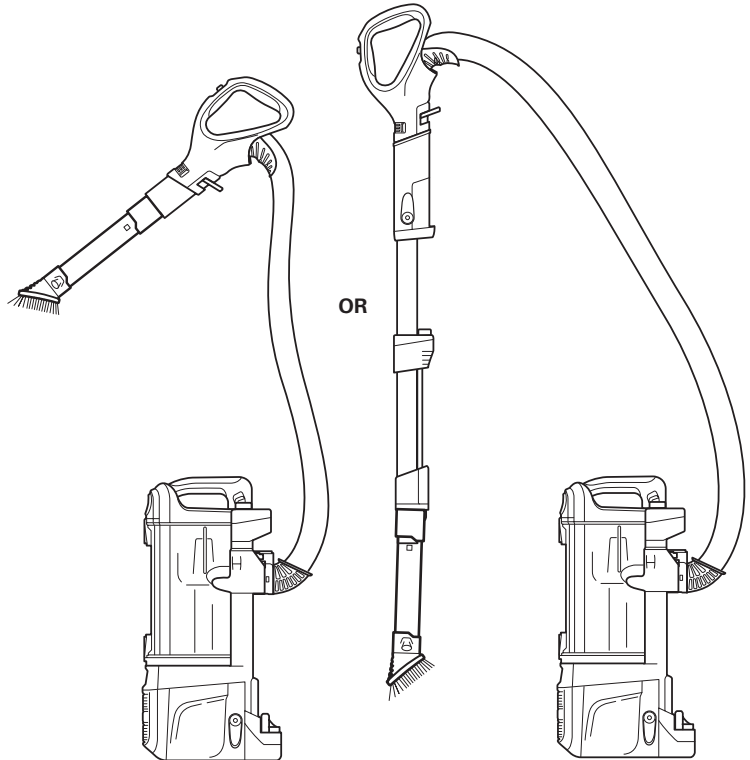
- 1 Press the Wand Release button to remove the wand from the motorized floor nozzle.
- 2 Press the Lift-Away button to remove the pod from the motorized floor nozzle.
- 3 Insert the wand into the Dust-Away Hard Floor Attachment.

NOTE: For best results, ensure that the Suction Control is set to MAX.

NOTE: Refer to page 4 for instructions on attaching the microfiber pad to the Dust-Away Hard Floor Attachment.

LIFT-AWAY™ CLEANING

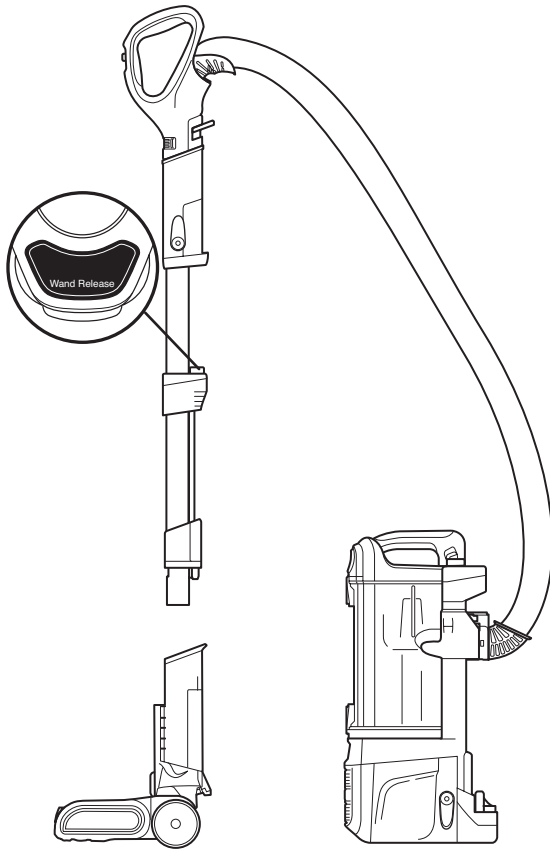
Leave the nozzle behind for an easy and portable clean.



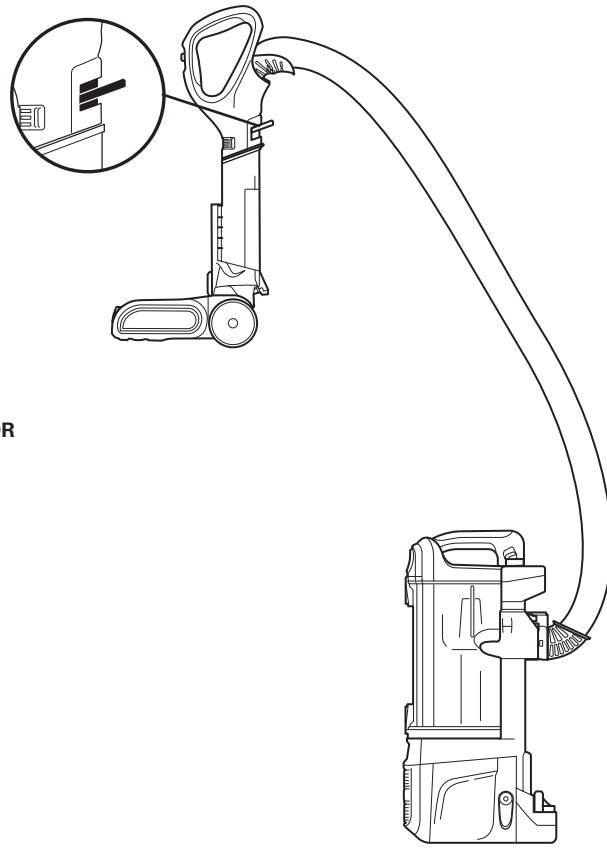
- 1 Attach the desired accessory directly into the handle.
- OR**
- 2 For an extended reach, attach the desired accessory into the wand.

POWERED LIFT-AWAY™ CLEANING

Hidden debris: consider yourself warned. Powered Lift-Away is coming for you, with a motorized brush that cleans under, around, and behind any hard-to-reach area.



OR



Press Lift-Away button to lift the pod off the motorized floor nozzle.

Insert the wand into the motorized floor nozzle.

TIP: Using the vacuum in Powered Lift-Away mode gives you extended reach for cleaning under furniture and in tight spaces.

OR

Insert the handle directly into the motorized floor nozzle.

TIP: Attaching the handle directly into the motorized floor nozzle makes cleaning stairs easy.

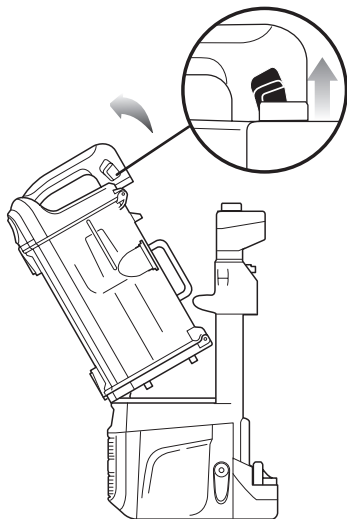
MAINTENANCE

To keep your vacuum's suction power optimal, follow these instructions.

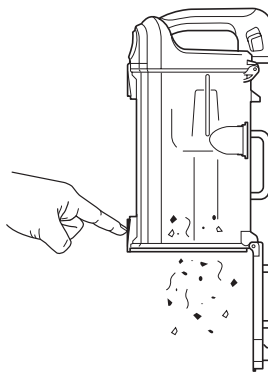
Make sure unit is off and cord unplugged.

IMPORTANT: Allow ALL filters to dry completely before replacing into the vacuum.

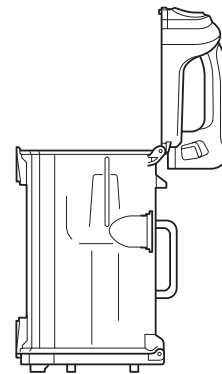
STEP 1



STEP 2



STEP 3



EMPTYING THE DUST CUP

- 1 Pull up on the dust cup release latch and lift the dust cup off the pod.
- 2 Holding the dust cup over a garbage bag or can, press the bottom empty release latch.
- 3 Press the top dust cup release latch to access the dust screen and remove built-up debris as required.

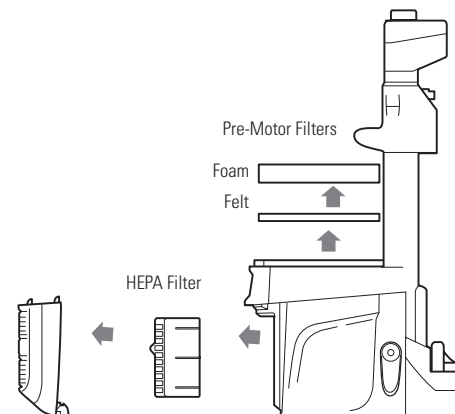
CLEANING THE FILTERS

- 1 With the dust cup removed, remove and rinse the foam and felt filters every 3 months. Let air-dry completely before replacing. Hand wash only. Tap loose dirt off filters between washes as needed.
- 2 Once a year, open the filter grill and remove and rinse the HEPA filter. Let air-dry completely before replacing. Hand wash only.

⚠ WARNING: DO NOT PICK UP FIREPLACE ASH OR DRYWALL DUST.

RECOMMENDED FILTER CLEANING SCHEDULE:

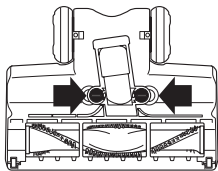
Pre-Motor Filter Kit (Foam & Felt): **XFFT580** Every 3 months
 HEPA Filter: **XHEP580** Every year



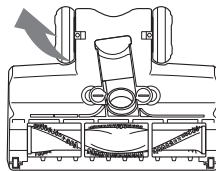
MAINTENANCE

To keep your vacuum's suction power optimal, follow these instructions. Make sure unit is off and cord unplugged.

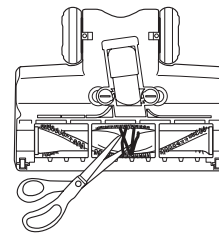
STEP 1



STEP 2



STEP 3



CHECK FOR BLOCKAGES

- 1 Use a coin to unlock the 2 locks on the bottom of the floor nozzle.
- 2 Pull up to expose the airway. Shine a flashlight from the bottom to check for possible blockage in the airway.
- 3 Remove any string, carpet fibers or hair that may be wrapped around the brush roll. There is a groove on the brush bar that allows a pair of scissors to cut across it to loosen up the debris. Lock the 2 locks on the bottom of the floor nozzle.

TROUBLESHOOTING GUIDE

Customer Service: 800-798-7398

Vacuum is not picking up dirt. No suction or light suction.

- Check filters to see if they need cleaning. Follow instructions for rinsing and drying the filters before re-inserting back into the vacuum.
- Dust cup may be full; empty dust cup.
- Check hose, hose connections, nozzles and accessories for blockages; clear blockages if required.

Vacuum lifts area rugs.

- Turn off the unit to disengage the brushroll from the rug. Restart with the POWER button and slide the Floor Selector to Hard Floor for suction only cleaning.
- Suction is powerful. Take care when vacuuming area rugs or rugs with delicately sewn edges.
- Slide the Suction Control tab on the handle towards MIN to decrease suction power..

Brush roll does not spin.

- If brushroll indicator light on the motorized floor nozzle turns red, the brushroll has stopped spinning. Immediately turn off, unplug vacuum and remove blockage. Replace the power plug into the electrical outlet and turn the vacuum on.
- Pull the handle toward you and release the motorized floor nozzle to disengage the auto-off feature.
- Make sure that the Floor Selector is set to Carpet.
- Immediately turn off and unplug vacuum, disconnect the motorized floor nozzle and remove blockage before reconnecting and turning vacuum back on.

Vacuum turns off on its own or indicator light flashes red.

- If the hose connection is not properly latched, it can cause a poor electrical connection and the hose can come loose and power vacuum OFF.
 1. Turn the unit off; unplug the vacuum.
 2. Empty the dust cup and clean filters.
 3. Check for blockages in hose, accessories and inlet openings.
 4. Remove cord from cord hook so hose latch can be seen and engaged. Reassemble.
 5. Ensure hose latch makes an audible "click" where the hose meets the back of the vacuum. Also, make sure the hose latch makes a "click" where the wand plugs into the neck of the floor nozzle, and where the handle plugs into the wand. The connection of the back of the dust cup to the hose often requires additional force. Ensure you hear the audible click.
 6. Pull on hose to ensure latch is fully engaged.
 7. If latch is not flush to hose connector, hose is not fully engaged.
 8. Plug in the vacuum.
 9. Restart the vacuum.
- This vacuum cleaner is equipped with a motor protective thermostat. If for some reason your vacuum overheats, the thermostat will automatically turn the unit off. Should this occur, perform the following steps to restart the motor thermostat:
 1. Turn the unit off.
 2. Unplug the vacuum.
 3. Empty the dust cup and clean filters.
 4. Check for blockages in hose, accessories and inlet openings.
 5. Allow the unit to cool for a minimum of 45 minutes.
 6. Plug in the vacuum.
 7. Turn the unit on.Note: If vacuum still does not start, contact Customer Service at: 800 798-7398.

Shark®

WE WANT TO HEAR FROM YOU!



www.SharkClean.com



1.800.798.7398

JOIN THE CONVERSATION:



@sharkcleaning

WATCH & LEARN MORE:



youtube.com/shark

EURO-PRO Operating LLC

Newton, MA USA 02459

Ville St. Laurent, Québec Canada H4S 1A7

For Shark | Ninja U.S. Patent information, visit <http://www.europro.com/USPatents>

NV581_150709_4
© 2015 Euro-Pro Operating LLC

Printed in China

Illustrations may differ from actual product. We are constantly striving to improve our products, therefore the specifications contained herein are subject to change without notice.