

## SAFETY

These pond pumps are carefully inspected and tested to ensure both safety and operating performance. However, failure to follow the instructions and warnings in this guide may result in pump damage and/or serious injury. There will be no liability for any damage resulting from failure to observe this guide's instructions.

1. To reduce risk of electric shock, always disconnect the pump from the electrical supply before handling or cleaning the pump.
2. To reduce risk of electric shock, inspect the pump and cord for damage before installation or maintenance — replace pump if damage is found.
3. Do not exceed voltage indicated on the label. Pump **must be connected to an approved ground fault circuit interrupter (GFCI) receptacle.**
4. Always keep the cord away from high temperature.
5. To achieve best performance, the pump should be placed on a flat surface and completely submerged in the water.
6. Do not let the pump run dry as this will shorten the pump's life.
7. Do not lift, hang, or pull the pump by the power cord.

## LIMITED WARRANTY

This pump is warranted to the original user against defective materials and workmanship for a period of 24 months. Our limited warranty does not cover any costs associated with the installation or removal of products subject to warranty claims or the cost of return of the pump. The warranty will commence from the date of purchase. Replacement liability is limited to any part or parts of the unit which have failed due to defective material or workmanship. Proof of purchase is required for all claims against the limited warranty. This warranty does not extend to damage of the product or part resulting from accident, misuse, alteration, neglect, abuse, improper installation or normal wear and tear to the product(s). This limited warranty extends only to the original user of the product.

For more information on this and other products, please visit our web site:

**[www.angelodecor.com](http://www.angelodecor.com)**

To contact us regarding this unit, your options include:

Email: [customersupport@angelodecor.com](mailto:customersupport@angelodecor.com) | Phone: (780) 453 - 6646 | Fax: (780) 453- 6620

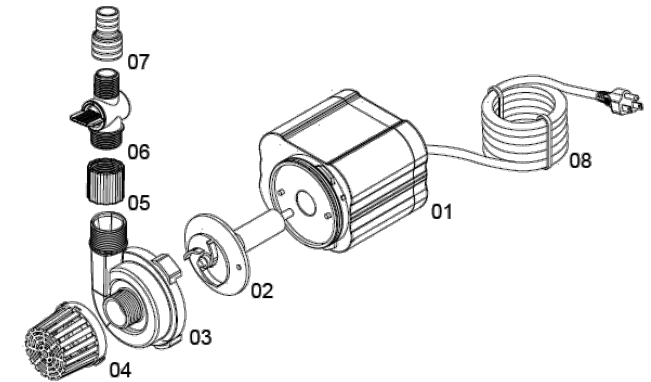
Angelo Décor International Inc. | 15840 – 118<sup>th</sup> Avenue | Edmonton, AB | T5V 1C4



## POND PUMPS AD40600, AD40800, AD41001

### COMPONENTS

01. Pump Housing
02. Impeller Assembly
03. Impeller Cover
04. Front Cover
05. Output Adapter
06. Flow Control
07. ¾" / 1" Output
08. Power Cord



### IMPORTANT! BEFORE YOU BEGIN:

This pump is designed for use in “clean water applications”, if you are using **ONLY** the integrated pre-filter cartridge. It is not compatible with salt water.

Using this series of pump in an outdoor functional pond environment without using proper filtration will cause increased maintenance and could result in pump failure due to a build-up of debris. **This type of improper pump care is not covered under warranty.**

We strongly recommend using this pump with our **Pond Building Series™** Filters (sold separately), as they include mechanical and biological components that are designed to protect your pump while improving water quality.

This pump is ideally suited to use in conjunction with our Pond Pump Filter (AD46111), all Pond Filter boxes, a waterfall weir filter or an externally located pressurized filter.

For maximum satisfaction with your project we suggest choosing a filter that slightly exceeds your current pond plan as most consumers will upgrade features, fish, and plants during the life cycle of your project.

## WARNING: SAFETY AND ELECTRICAL CONNECTIONS

The pump is supplied with 5m of 3 core electrical cable which is permanently connected and sealed to the motor. The supply cable cannot be replaced. If the cable is damaged the pump should be discarded.

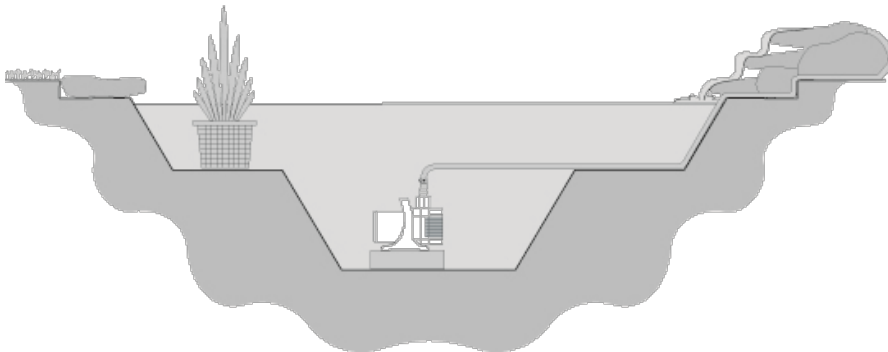
1. Pump **must be connected to an approved ground fault circuit interrupter (GFCI)** receptacle.
2. Do not connect to any voltage other than that stated on the pump.
3. Warning: **Always** unplug or disconnect all appliances from the electricity supply before putting hands in the water, while equipment is being installed, repaired, maintained or handled.
4. Do not use the supply cable to lift the pump as this may cause damage.
5. Do not operate or leave the pump in freezing conditions.
6. Do not allow the pump to run dry. The pump must be fully submerged.

## INSTALLATION IN POND

Place your pump on top of a flat brick or stone approximately 2" – 4" from the bottom of your pond to help prevent debris from interfering with the pump's performance.

Make sure the cable is securely routed to the GFCI electrical supply and is protected against abrasion and damage.

After electrical installation to test, completely submerge the pump under water. When your pump is working properly, you will hear a low humming sound and water will be circulating out of the top outlet. If you do not hear the humming sound or experience performance problems, please read the troubleshooting tips and care instructions in this guide.



## TECHNICAL SPECIFICATIONS

Model	Liters/Hr	Voltage	Watts	Max Head cm
AD40600	2400	120	37	250
AD40800	3200	120	55	400
AD41001	4000	120	80	450

## HINTS AND TROUBLESHOOTING

**CAUTION: ALWAYS DISCONNECT THE PUMP FROM THE ELECTRICAL SUPPLY BEFORE HANDLING.**

If the pump operates but there is no water flow:

- Make sure the pump is fully submerged.
- Check the tubing for kinks or obstructions. Ensure pump outlet is clear of objects.
- Check water features like spouting statues or fountain nozzles are clean and clear.
- Check water inlet for any obstructions.

If normal water flow has not returned:

- Remove front cover and impeller cover to access rotor area.
- Rotate the rotor to ensure it is not broken or jammed. Remove the rotor to check it is free from any debris. Rinse the cover and re-assemble.

## MAINTENANCE

Regular maintenance must be performed on any warranted item based upon this Owner's Guide recommendations. Do not pump heated liquids, and always keep the cord away from heat and high temperature. Connect the pump to an electrical supply with the proper voltage and fitted with a Residual Current Device.

1. Always disconnect the pump from the electrical supply before handling it.
2. Pond water must be kept clean using proper filtration components.
3. Always operate the pump completely submerged. Check the water level daily to ensure the pump will remain submerged. Add water if necessary.
4. Clean the pump periodically to prevent mineral deposits and contamination.
5. Disassemble the unit to clean any build up of debris inside the impeller and rotor.
6. Do not operate this pump below 0°C, otherwise **Freezing damage May Occur**. If temperature is likely to fall below 0°C remove the pump from the pond, ensure all water is removed from the pump and the unit is completely dry and stored in a frost-free place.