

CARPET · PRO

OPERATING INSTRUCTIONS

FOR CARPET PRO UPRIGHT VACUUMS

MODELS :

CPU-75,

CPU-75T,

CPU-85,

CPU-85T



Before operating the vacuum,
please read these instructions completely.

Index

Important Safety Instructions	2
Two-Wire Polarization/Three-Wire Polarization	3
Parts Identification.	4
Replacement Bags and Filters.	4
How to Assemble and Operate the Vacuum.	5
How to Change the Vacuum Bag	5
Handle Adjustments.	6
Filters.	6
Edge Cleaning Feature	6
Automatic Self-Adjusting Rug Nozzle.	7
Optional Cleaning Tools/Accessories	7
How to Replace the Headlight Bulb & Vacuum Belt	8
How to Clean the Nozzle Hose	9
Thermal Fuse Protection	9
For Best Performance.	10

Customer's Record

The model and serial numbers of this product may be found on the back side of the unit. You should complete the enclosed warranty card and mail it back to us as soon as possible for your protection. Also, note the model and serial numbers of your unit in the spaces provided below, and retain this book as a permanent record of your purchase.

Model Number: _____

Serial Number: _____

Date Purchased: _____

Your Carpet Pro vacuum cleaner is a product of high quality materials and superior workmanship. We urge you to read these operating instructions carefully before you use this vacuum cleaner, in order to obtain the full performance and satisfaction it can offer you.

Save These Instructions

Before you plug in your Carpet Pro vacuum cleaner, make sure the voltage indicated on the rating plate located underneath the vacuum cleaner is the same as your local supply.

IMPORTANT SAFETY INSTRUCTIONS

READ ALL INSTRUCTIONS BEFORE USING THIS APPLIANCE.

This machine is not intended for use by persons (including children) with reduced physical, sensory or mental capabilities, or lack of experience and knowledge, unless they have been given supervision or instruction concerning use of the machine by a person responsible for their safety.

When using an electrical appliance, basic precautions should always be followed, including the following:

SAVE THESE INSTRUCTIONS.

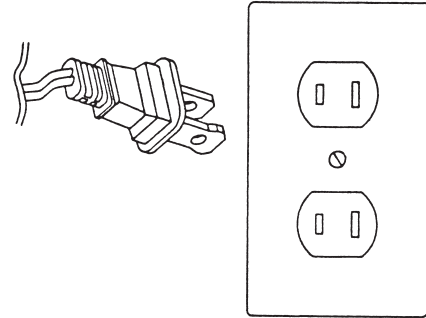
WARNING! To reduce the risk of fire, electric shock, or injury:

1. Do not leave appliance unattended when plugged in. Unplug from outlet when not in use and before servicing.
2. **WARNING:** ELECTRIC SHOCK COULD OCCUR IF USED OUTDOORS OR ON WET SURFACES.
3. Do not allow to be used as a toy. Keep children and unauthorized persons away from the machine when in use.
4. Use only as described in this manual. Use only manufacturer's recommended attachments.
5. Do not use with damaged cord or plug. If appliance is not working as it should, has been dropped, damaged, left outdoors, or dropped into water, return it to a service center.
6. **WARNING** - The replacement or repair of damaged wiring should only be performed by a qualified electrician or service engineer from the original distributor or authorized service agent.
7. Do not pull or carry by cord, use cord as a handle, close a door on cord, or pull cord around sharp edges or corners. Do not run appliance over cord. Keep cord away from heated surfaces.
8. Do not unplug by pulling on cord. To unplug, grasp the plug, not the cord.
9. Do not handle plug or appliance with wet hands.
10. Turn off all controls before unplugging.
11. Do not put any object into openings. Do not use with any opening blocked; keep free of dust, lint, hair and anything that may reduce air flow.
12. Keep hair, loose clothing, fingers and all parts of body away from openings and moving parts.
13. Do not pick up anything that is burning or smoking, such as cigarettes, matches or hot ashes.
14. Do not use without vacuum bag and/or filters in place.
15. Use extra care when cleaning on stairs.
16. Do not use to pick up flammable or combustible liquids such as gasoline or use in areas where they may be present.
17. Do not attempt to service the unit while appliance is plugged in.
18. For grounded models, connect to a properly grounded outlet only. See Grounding Instructions.

Two-Wire Polarized Cord

MODELS: CPU-75 AND CPU-75T

This product is equipped with a polarized alternating current line plug (a plug having one blade wider than the other). This plug will fit into the power outlet only one way. This is a safety feature. If you are unable to insert the plug fully into the outlet, try reversing the plug. If the plug should still fail to fit, contact an electrician to replace the obsolete outlet. Do not defeat the safety purpose of the polarized plug.



Three-Wire Polarized Cord

MODELS: CPU-85 AND CPU-85T

This appliance must be grounded. If it should malfunction or break down, grounding provides a path of least resistance for electric current to reduce the risk of electric shock. This appliance is equipped with a cord having an equipment-grounding conductor and grounding plug. The plug must be plugged into an appropriate outlet that is properly installed and grounded in accordance with all local codes and ordinances.

This appliance is for use on a nominal 120 volt circuit and has a grounding attachment plug that looks like the plug illustrated in Fig. 1. Make sure that the appliance is connected to an outlet having the same configuration as the plug. No adapter should be used with this appliance.

WARNING - Improper connection of the equipment-grounding conductor can result in a risk of electric shock. Check with a qualified electrician or service person if you are in doubt as to whether the outlet is properly grounded. Do not modify the plug provided with the appliance. If it will not fit the outlet, have a proper outlet installed by a qualified electrician.

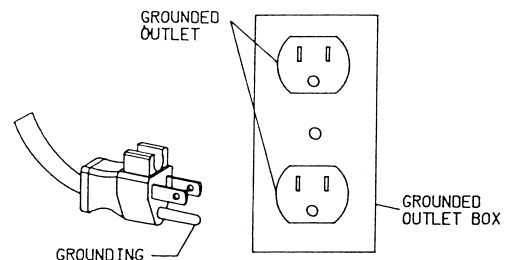
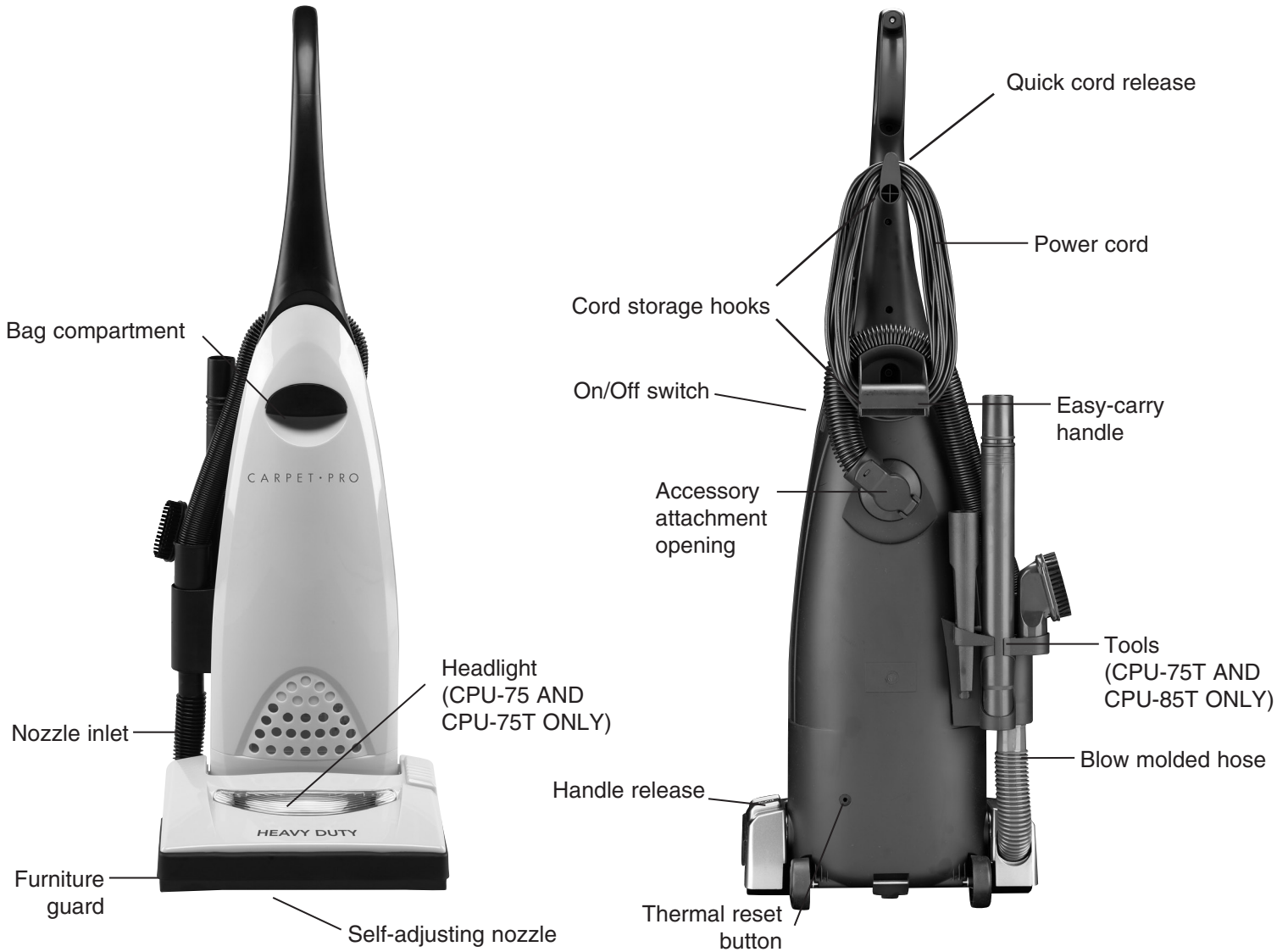


Fig. 1

Parts Identification



Replacement Bags and Filters

- Genuine Carpet Pro Vacuum Bags
Part number 06.144
6 per package
- Genuine Carpet Pro Secondary Filter
Part number 06.250
- Genuine Carpet Pro Foam Filter
Part number 06.265

How to Assemble and Operate the Vacuum

How to Attach the Handle to the Vacuum Cleaner

The vacuum and the handle are packed separately.

1. After first removing the handle screw, slide the handle into the slots on top of the vacuum cleaner. (Fig. 1)
2. Line up the small hole on the handle with the small hole on the vacuum cleaner and insert the screw. Make sure the screw is tightened securely.
4. Turn the upper cord storage hook to the upright position and wind the power cord around the cord storage hooks when storing the vacuum cleaner (Fig. 2).



Fig. 1



Fig. 2

How to Release the Power Cord

1. The upper cord storage hook has a quick-release action. To release the cord, rotate the hook downward and the cord will drop off the handle for immediate use (Fig. 3).
2. Return the hook to the upright position before attempting to rewind the cord.

On/Off Switch (Fig. 3)

1. To turn the vacuum on, push the switch located on the side of the bag compartment the (I) position.
2. To turn the vacuum off, push the switch located on the side of the bag compartment the (0) position.

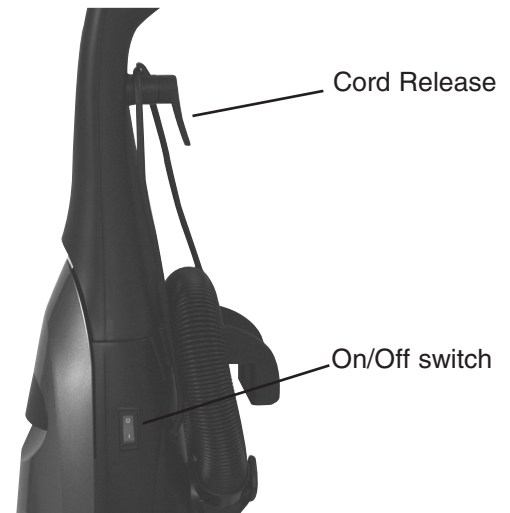


Fig. 3

How to Change the Vacuum Bag

Always operate the vacuum cleaner with a vacuum bag installed.

How to Change the Vacuum Bag

1. Unplug the vacuum cleaner. Remove the bag compartment door (Fig. 1).
2. Remove the bag from the bag holder. Attach the new vacuum bag onto the bag holder (Fig. 2).
3. Pull the bottom corners of the new vacuum bag (Fig. 3).
4. Reinsert the tab on the end of the bag compartment door into the groove on the bag compartment housing. Press it into place closing the bag compartment door tightly.



Fig. 1



Fig. 2



Fig. 3

Handle Adjustments

The handle on this vacuum cleaner can be set to one of three positions – upright, middle or low.

How to Adjust the Handle

1. To release the handle, step on the foot pad on the top left of the vacuum cleaner (Fig. 1).
2. Middle position – for normal cleaning (Fig. 2).
3. Upright position – for when cleaning tools are used or for storage (Fig 3). Handle locks in this position.
4. Low position – for cleaning under furniture* (Fig. 4).

*Once in the middle position, step on the foot pad again to place the vacuum in the low position.



Fig. 1



Fig. 2

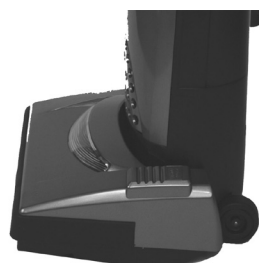


Fig. 3



Fig. 4

Filters

Your vacuum cleaner is equipped with a secondary filter and a foam filter. These filters capture fine dust particles and protect the motor from dirt. Accumulated dirt in the bag compartment will be collected on the filters and may restrict motor performance. It is important to change the filters regularly – approximately once every six months or as needed.

To Change Secondary Filter:

1. Unplug the vacuum cleaner. Remove the bag compartment cover and remove the vacuum bag.
2. Remove the secondary filter by sliding it out from under the bag supporter. (Fig. 5).
3. Insert a new filter and replace the bag compartment cover.



Fig. 5

Edge Cleaning Feature

For best results when cleaning carpets near walls and stationary furniture, place the right side of the vacuum nozzle along the wall or furniture.

Automatic Self-Adjusting Rug Nozzle

Your Carpet Pro upright vacuum cleaner is designed with an Automatic Self-Adjusting Rug Nozzle. No manual adjustments are required. The height of the rug nozzle is instantly and automatically adjusted to carpet pile height. This self-adjusting feature allows the rug nozzle to float evenly over all carpet pile surfaces.

Optional Cleaning Tools/Accessories

Deluxe Attachment Set 05.119 (Fig. 1)

- 15-foot crushproof hose
- Curved wand
- Extension wand (2 pieces)
- Dusting brush
- Crevice tool
- Upholstery tool
- Upholstery brush insert
- Deluxe floor brush



Fig. 1

Attachment Set 05.123 (Fig. 2)

- 7-foot crushproof hose
- Curved wand
- Deluxe floor brush
- Extension wand (2 pieces)
- Crevice tool
- Upholstery tool



Fig. 2

Connecting the hose assembly to the vacuum cleaner:

Open the lid located on the back side of the vacuum cleaner and insert the plastic end of the hose assembly into the cleaning attachment opening. Then connect the extension wand to the hose assembly (Fig. 3).

Attachment Cleaning:

Select models (CPU-75T and CPU-85T) are equipped with on-board cleaning tools including an extension wand, stretch hose, dusting brush and a crevice tool.

1. Remove the extension wand from the body of the vacuum cleaner. Insert one end of the wand into the other and twist to tighten.
2. Insert any of the tools onto the end of the wand.



Fig. 3

How to Replace the Headlight Bulb and the Vacuum Belt

CAUTION:

First, unplug the vacuum cleaner.

How to Remove the Bottom Plate.

1. Place vacuum cleaner in the low position by stepping on the foot pad and pulling back the handle twice. Then, turn the vacuum cleaner over, exposing the underside.
2. Remove the four screws holding the lower plate in place (Fig. 1).
3. Now remove the bottom plate.



Fig. 1

How to Replace the Bulb. MODELS: CPU-75 AND CPU-75T

1. Place vacuum cleaner in the low position by pressing the handle release pedal twice. Remove the bottom plate as described above.
2. To remove the old bulb, pull it straight out (Fig. 2).
3. To install a new bulb, press it in until it clicks into place. These bulbs are standard and may be obtained from most appliance repair shops.
4. Replace the bottom plate with four screws.

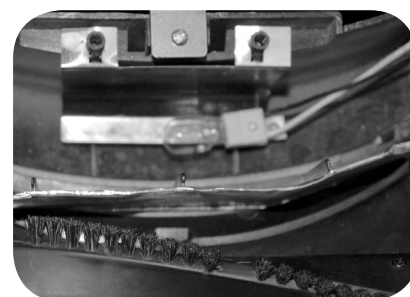


Fig. 2

How to replace the belt.

1. Turn the unit over and remove the bottom plate as described above. (Fig. 1)
2. Take out the agitator assembly and remove the belt (Fig. 3).
3. Loop the new belt around the agitator pulley and the motor drive shaft.
4. Reinsert the agitator assembly back into housing (Fig 4). Turn the agitator assembly by hand, making sure the belt is not twisted and all rotating parts move smoothly (Fig. 5).
5. Press the bottom plate into place and fasten it by four screws.

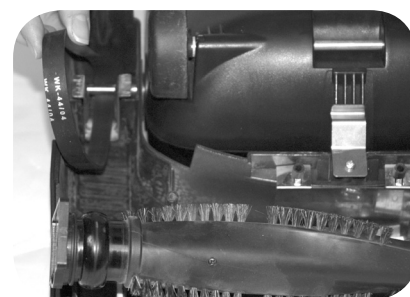


Fig. 3

NOTE: To ensure maximum cleaning efficiency, the belt should be checked regularly to be sure it is in good condition. Check to see if the belt is stretched, cracked, or if excessive slipping is occurring. Replace it if needed.



Fig. 4



Fig. 5

How to Clean the Nozzle Hose

CAUTION:

Unplug the vacuum cleaner.

The nozzle hose, located on the back of the vacuum cleaner, carries the dirt from the nozzle to the vacuum bag. If the hose should become clogged:

1. Pull out and turn the lid of the cleaning attachment opening. Remove the clog or blockage (Fig. 1).
2. If the above step is not enough, turn the unit over and unscrew and remove the bottom plate (see "How To Remove Bottom Plate."). Check nozzle inlet tube for obstructions. Clear tube and reinstall the bottom plate.



Fig. 1

Thermal Fuse Protection

Your Carpet Pro vacuum cleaner comes equipped with a Manual Reset Thermal Fuse Protector. This thermal protector is designed to protect your vacuum cleaner from overheating due to a cutoff in airflow (i.e. clogged hose, operating the vacuum without a bag). Should this situation occur, the thermal fuse protector will safely shut off your vacuum cleaner to avoid any potential damage.

NOTE: For models CPU-75 and CPU-75T, to determine that it was the thermal fuse protector that turned off your vacuum cleaner and not some other reason, please refer to the vacuum cleaner's headlight. If the headlight is on while the motor is off, then the thermal fuse did safely shut down the motor. If the headlight and motor are off, then there is some reason other than the thermal protector (i.e. pulled plug) the vacuum cleaner has shut down.

To reset the thermal fuse:

1. Unplug the vacuum cleaner.
2. Check for problem (over-filled bag, clog in hose, clogged filters, etc.).
3. Correct problem.
4. Locate "tripped" fuse — the small white button located on the bottom of the back side of the main body (roughly one inch to the right of the left wheel).
5. Using a pencil, paper clip, or other pointy object, push the reset button.
6. Plug vacuum cleaner in and begin using.

Please contact your Authorized Carpet Pro Retailer with any questions.

For Best Performance

- Keep machine and all accessories clean and in good operating condition.
- Change vacuum bags and filters as recommended to maintain optimum cleaning efficiency.
- Always use genuine Carpet Pro vacuum bags, filters and parts as use of other products may result in poor cleaning or filtration performance. Carpet Pro filtration products are designed for maximum performance.
- Have machine checked periodically by a qualified vacuum technician.
- Store machine carefully in dry area.
- For optimum cleaning performance and safety, follow your Owner's Manual and keep it for future reference.

