

BLACK+DECKER™

THERMAL PROGRAMMABLE
12-CUP COFFEE MAKER

Use & Care Manual
CM2035B



CONTENTS

Important Safeguards	1
Getting to know your Coffee Maker	2
Product Benefits	3
Getting to know your Control Panel	4
Before Brewing	5
Programming your Coffee Maker	5-6
4 Elements to Brew the Perfect Cup	7
Tips for a Perfect Cup of Coffee	8
Brewing Coffee	9-10
Care and Cleaning	11
Troubleshooting	12
Warranty and Customer Service Information	13



WARNING

RISK OF FIRE OR ELECTRIC SHOCK. DO NOT OPEN.

The lightning symbol refers to "dangerous voltage"; the exclamation symbol refers to maintenance instructions. See below.

Warning: To reduce the risk of fire or electric shock, do not remove the cover of the coffeemaker. There are no user-serviceable parts inside. Repair should be done by authorized service personnel only.

IMPORTANT SAFEGUARDS.

When using electrical appliances, basic safety precautions should always be followed including the following:

- Read all instructions.
- Do not touch hot surfaces. Use handles or knobs.
- To protect against fire, electric shock and injury to persons do not immerse cord, plugs or appliance in water or other liquid.
- Close supervision is necessary when any appliance is used near children.
- Unplug from outlet when not in use and before cleaning. Allow to cool before putting on or taking off parts, and before cleaning the appliance.
- Do not operate any appliance with a damaged cord or plug, or after the appliance malfunctions or has been damaged in any manner. Contact the consumer service number listed in this manual.
- The use of any accessory not evaluated for use with this appliance may result in fire, electric shock or injury to persons
- Do not use outdoors.
- Do not let cord hang over edge of table or counter, or touch hot surfaces.
- Do not place on or near a hot gas or electric burner, or in a heated oven.
- To disconnect, turn the unit OFF, then remove plug from wall outlet.
- Do not use this appliance for other than intended use.
- Keep lid on the carafe when in use.
- Scalding and/or burns may occur if the lid is removed during the brewing cycle.
- CAUTION: To prevent injury when utilizing the Sneak-a-Cup™ feature, replace carafe within 20 seconds of removing during the brewing process.
- The carafe is designed for use with this appliance. It must never be used on a range top.
- Do not set a hot carafe on a wet or cold surface.
- Do not use a cracked carafe or a carafe having a loose or weakened handle.
- Do not clean carafe with cleansers, steel wool, or other abrasive material.
- Avoid contacting moving parts.
- This appliance is not intended for use by persons (including children) with reduced physical, sensory or mental capabilities, or lack of experience and knowledge, unless they have been given supervision or instruction concerning use of the appliance by a person responsible for their safety.
- Children should be supervised to ensure that they do not play with the appliance.

SAVE THESE INSTRUCTIONS. This product is for household use only.

POLARIZED PLUG (120V models only)

This appliance has a polarized plug (one blade is wider than the other). To reduce the risk of electric shock, this plug is intended to fit into a polarized outlet only one way. If the plug does not fit fully into the outlet, reverse the plug. If it still does not fit, contact a qualified electrician. Do not attempt to modify the plug in any way.

TAMPER-RESISTANT SCREW

Warning: This appliance is equipped with a tamper-resistant screw to prevent removal of the outer cover. To reduce the risk of fire or electric shock, do not attempt to remove the outer cover. There are no user-serviceable parts inside. Repair should be done only by authorized service personnel.

ELECTRICAL CORD

1. A short power-supply cord is provided to reduce the risk resulting from becoming entangled in or tripping over a longer cord.
2. Extension cords may be used if care is exercised in their use.
3. If a long detachable extension cord is used:
 - a) The marked electrical rating of the power cord or extension cord should be at least as great as the electrical rating of the appliance.
 - b) If the appliance is of the grounded type, the extension cord should be a grounding-type 3-wire cord.
 - c) The cord should be arranged so that it will not drape over the countertop or tabletop where it can be pulled on by children or tripped over.

Note: If the power cord is damaged, please contact the warranty department listed in these instructions.

GETTING TO KNOW YOUR COFFEE MAKER



- | | |
|---|--|
| 1. Lid | 5. Easy-view water window |
| 2. Evenstream showerhead | 6. Control panel |
| 3. Water reservoir | 7. Carafe lid (Part # CM2035-03) |
| 4. Washable brew basket
(Part # CM2035-01) | 8. 12-cup stainless steel
thermal carafe (Part # CM2035-02) |

PRODUCT BENEFITS

Fresh Brew Timer

After the brew cycle is complete, the time since brewed will be displayed in 1-minute increments up to 120 minutes.

Stainless Steel Thermal Carafe

The large capacity 12-cup double-walled vacuum-sealed stainless steel thermal carafe keeps coffee hot and fresh for hours.

Washable Brew Basket

The washable brew basket can easily be removed and washed after brewing, and is top rack dishwasher safe.

Evenstream Showerhead

This technology provides even saturation of the coffee grounds for optimal flavor extraction.

Auto Brew

The programmable Auto Brew delay start allows you to set the 24-hour timer to brew coffee at the selected time, day or night.

Digital Clock

The LCD display features a programmable digital clock.

Auto-Shutoff

Once the brewing cycle is complete, the coffeemaker will automatically shut off for peace of mind.

Brew Strength Selector

Customize the flavor of your coffee by selecting from three brew strength settings: regular, strong, or bold.

Sneak-A-Cup™ Feature

Can't wait for the full pot of coffee to finish brewing? Use the Sneak-A-Cup™ feature, which stops the flow of coffee into your carafe, to grab a cup before brewing ends. Replace the carafe back in the coffeemaker within 20 seconds to prevent brew basket overflow.

1-4 Cup Brew Option

This brew setting optimizes the brewing cycle so you can make a smaller batch of coffee without giving up any of the flavor.

Perfect Pour™ Spout

The thermal carafe features a specially designed Perfect Pour™ spout for no more drips.

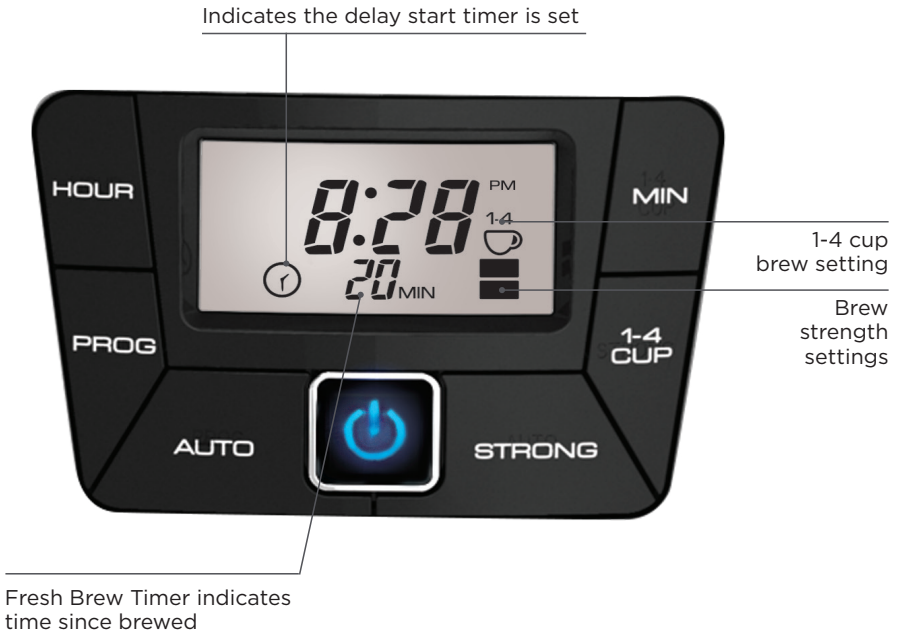
Easy Viewing Water Window

The water window shows the amount of water in the reservoir for easy and accurate filling.

Cord Storage

Keep excess cord out of the way and your countertop neat with simple cord storage.

GETTING TO KNOW YOUR CONTROL PANEL



Digital Clock with LCD Display

Power: Lighted button turns the unit ON or OFF.

Auto: Turns on the Auto Brew delayed start.

Program: To program the Auto Brew delay start time, press and release button once

Hour: Use to program the clock (see “Programming” section)

Minute: Use to program the clock (see “Programming” section)

1-4 Cup: Use to brew a smaller 1-4 cup batch of coffee without giving up any flavor.

Strong: Use to select the Brew Strength setting (3 levels)

No bars = regular

1 bar (■) = strong

2 bars (■ ■) = bold

BEFORE BREWING

1. To register your product, go to www.prodprotect.com/applica
2. Carefully unpack your coffeemaker, removing all packaging materials, labels, and/or stickers from your coffeemaker.
3. Remove the plastic band around the power plug using scissors
4. Clean your coffeemaker thoroughly before using for the first time. Wash the thermal carafe and washable brew basket in warm, soapy water. Rinse and dry, then place back into your coffeemaker.
5. Clean the inside of your coffeemaker by running two full brewing cycles with water only, no coffee.
 - a. Pour fresh, cold water into the water reservoir up to the 12-cup MAX mark, then place carafe onto the carafe plate.
 - b. Plug cord into standard electrical outlet.
 - c. Push the ON-OFF / Power Button to immediately brew water through the coffeemaker without adding coffee.
 - d. Once the cycle is finished, discard water.
 - e. Turn off appliance, unplug and allow to cool down for 15 minutes before repeating.

PROGRAMMING YOUR COFFEE MAKER

Setting the Digital Clock

1. Plug the coffeemaker into a standard electrical outlet.
2. The digital clock display flashes "12:00".
3. To set the time, press the HR button until the correct hour appears on the display. The "PM" symbol will appear in the upper right corner of the digital display for PM time settings.
4. Press the MIN button to select minutes.

Note: If the unit is unplugged or power interrupted, the time will need to be reset, as will the Auto Brew delay start time.

Setting the Auto Brew Delay Start

The programmable Auto Brew delay start allows you to set the 24-hour timer to brew coffee at the selected time, day or night. To activate the Auto Brew timer, follow these steps:

1. After the digital clock is set, press the PROG button. The programmed clock time will begin to flash.
2. Press the HR button and then MIN button to select the time you would like automatic brewing to begin (for example: 7:30 AM). Make sure the PM light is not on, unless desired.

3. The timer display will flash several times then switch back to the current time of day.
4. Press and release the AUTO button to activate the delay start time that was just programmed. The timer icon (🕒) will remain solid, indicating Auto Brew is activated.
5. When the time of day matches the programmed Auto Brew set time, your coffeemaker will activate the brew cycle.
6. To cancel the Auto Brew function, press the AUTO button until the timer icon (🕒) disappears.

Note: To check the preset Auto Brew time, press PROG button to display the preset Auto Brew time. Press AUTO button to reactivate the timer.

Using the 1-4 Cup Setting

This brew setting optimizes the brewing cycle so you can make a smaller batch of coffee without giving up any of the flavor. To brew 1-4 cups, simply push the 1-4 Cup button until the corresponding symbol is displayed on the LCD display.

Setting the Brew Strength Selector

The Brew Strength Selector customizes the flavor of your coffee by selecting from three brew strength settings.

1. Press the STRONG button to cycle through the different Brew Strength settings (3 levels).
 - a. No bars = regular (default setting)
 - b. 1 bar (▬) = strong
 - c. 2 bars (▬▬) = bold

4 ELEMENTS TO BREW THE PERFECT CUP



Water Quality

A great cup of coffee starts with fresh, quality water. Since water represents more than 98% of brewed coffee, it is just as important as the coffee quality itself. The water you use should taste like fresh, good-quality drinking water, have an odorless aroma, and contain no visible impurities.



Coffee Freshness

A truly fresh cup of coffee only comes from freshly ground coffee beans. In fact, once a coffee bean is broken or ground, its flavor will begin to degrade over time. Maximize the freshness of your coffee by grinding coffee beans just prior to brewing.



Even Saturation

Even saturation of your coffee grounds is vital for ensuring proper flavor and extraction. Some coffee makers simply drip water down the center of the brew basket, which leads to over-extraction in the center of the coffee grounds and under-extraction on the perimeter. This coffeemaker features an Evenstream showerhead, providing even saturation of the coffee grounds for optimal flavor extraction.



Proper Proportion

It is important to use the proper coffee-to-water ratio to produce a finished brew that isn't too strong or weak. We recommend using 1 tablespoon of ground coffee for every 1 cup of brewed coffee. You may adjust this proportion to suit your individual taste, or try the Brew Strength Selector to customize your flavor!



TIPS FOR A PERFECT CUP OF COFFEE

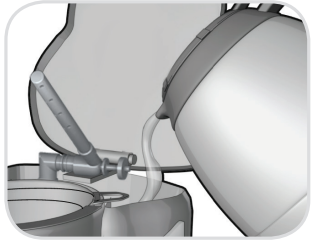


- To maximize the freshness of your coffee, grind whole coffee beans just before brewing.
- Always use fresh, cold, clean water in your coffee maker. The water you use should have an odorless aroma and contain no visible impurities.
- Use spring water or filtered water, not distilled water which lacks the minerals necessary to bind to elements of coffee.
- A clean coffee maker is always important. Regular cleaning is required for the best tasting coffee.
- Always keep the lid on your thermal carafe after brewing. The carafe is double-wall insulated and vacuum sealed to help keep your coffee hot and fresh for hours.
- Fill the carafe with hot tap water and empty before brewing, which will warm up the carafe and help keep coffee at the brewed temperature.
- Always store your coffee in a cool, dry place. Once coffee has been opened, keep it tightly sealed in an airtight container.
- Do not refrigerate or freeze your daily supply of coffee, as contact with moisture will cause the coffee to deteriorate.
- Never re-use your coffee grounds. After brewing, the desirable coffee flavors have been extracted and only the bitter flavors remain.
- Brewed coffee should be enjoyed immediately! Allowing coffee to sit too long and reheating coffee will impact the flavor.
- Smell the aroma of your freshly brewed coffee, and remember that every sip is meant to be savored and enjoyed!

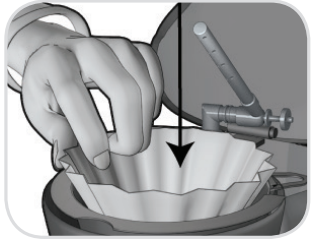
BREWING COFFEE

Note: You don't need to set the clock to brew coffee right away.

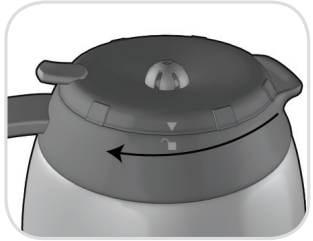
1. Open cover of coffeemaker. Fill water reservoir with cold tap water. Use lines on the easy viewing water window as a guide. Do not fill past 12 MAX line.



2. Place a basket shaped paper filter into the brew basket. Add ground coffee (we suggest 1 tablespoon per cup). Put brew basket in place.

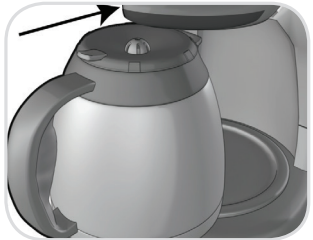


3. Close carafe lid by first lining up the arrow on the lid with the unlocked symbol on the carafe. Turn the lid clockwise until arrow on the lid is lined up with the locked symbol.



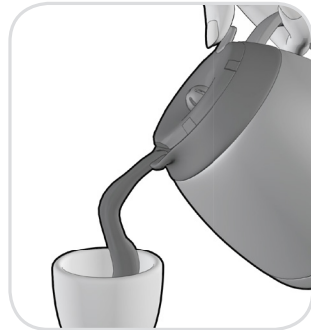
Note: Coffee may run over if lid is not correctly in place on carafe.

4. Place empty carafe on the carafe plate and plug cord into a standard outlet.



5. To set the Auto Brew delay start, brew strength selector, and 1-4 cup setting, follow the instructions in the “Programming” section.

6. Press ON/OFF button once to begin brewing.
7. The Sneak-A-Cup™ feature allows you to pour a cup of coffee before the brewing cycle is complete. The carafe must be placed back into the coffeemaker within 20 seconds to prevent overflow. Replacing the carafe will restart the brewing process.
8. Brew timer will begin when brewing cycle is complete.
9. Press tab on carafe lid to pour coffee.
10. To turn off the coffeemaker at any time press the ON/OFF button.
11. When coffee grounds are cool, carefully remove and throw away used grounds and filter.
12. Clean the thermal carafe and washable brew basket according to the instructions in the CARE AND CLEANING section.



CARE AND CLEANING

Cleaning your coffee maker, following the directions below is recommended after every use. This product contains no user serviceable parts.

Cleaning

1. Make sure your coffeemaker is unplugged and cool.
2. Open the coffeemaker cover. Remove the brew basket. Throw away the used paper filter and coffee grounds.
3. Wash the brew basket and carafe in the dishwasher (top-rack) or by hand in warm, soapy water.
4. Wipe the outside of the coffeemaker, power cord and carafe plate with a soft, damp cloth.
5. To clean the inside of the cover, open the cover and leave in the open position; wipe surfaces with a damp cloth.

Note: Do not use abrasive cleansers or scouring pads, and never immerse the coffeemaker in water.

COFFEE MAKER PART	CLEANING INSTRUCTIONS
Housing Carafe Plate Power Cord	Wipe with a soft, damp cloth.
Carafe and carafe lid Washable Brew Basket	Wash by hand in warm soapy water, or in the dishwasher (top rack only).

Descaling with Vinegar

With regular use, minerals and hard water can clog your coffee maker. A full cleaning with vinegar is recommended once a month.

1. Pour white vinegar into the water reservoir up to the 5-cup mark on the water window. Add cold water up to the 12-cup mark.
2. Put a basket shaped paper filter in the brew basket and close the cover. Set the empty carafe on the carafe plate.
3. Push the ON/OFF button to start the brewing cycle. Let half the cleaning mixture brew into the carafe (until the level is around 6 cups). Turn OFF the coffeemaker and let it soak for at least 15 minutes.
4. Turn ON the coffeemaker again and brew the remaining cleaning mixture into the carafe. Then, turn OFF the coffeemaker; empty carafe and discard the paper filter.
5. Fill the water reservoir with cold water to the 12-cup line; replace empty carafe on carafe plate and then turn ON the coffeemaker for a complete brewing cycle to flush out the remaining cleaning mixture. You may want to repeat this step to completely remove the vinegar smell/taste.
6. Wash the brew basket and carafe as shown in CLEANING.

TROUBLESHOOTING

PROBLEM	POSSIBLE CAUSE	SOLUTION
Coffee maker does not turn on.	Coffee maker is not plugged in.	Make sure appliance is plugged into a working outlet.
Coffee maker is leaking.	Water reservoir may be overfilled.	Make sure water reservoir has not been filled beyond the 12-cup MAX line.
	Cover may not be correctly placed on carafe	Make sure cover is correctly placed and tightened on carafe
	Carafe may not be correctly placed on the carafe plate	Make sure carafe is placed correctly on the carafe plate.
The brew basket overflows.	The carafe has been removed for longer than 20 seconds when using the Sneak-A-Cup™ feature.	Make sure to replace the carafe within 20 seconds during the brewing cycle.
	Excessive amount of coffee is used.	Reduce the amount of coffee used to eliminate brew basket overflows.
Coffee sediment in brewed cup of coffee.	The paper filter and/or the brew basket are not properly placed.	Insert basket-shaped paper filter into brew basket and insert basket properly into holder.
The coffee maker brews slowly.	The coffee maker needs cleaning.	Follow the instructions in the “Descaling with Vinegar” section.

If additional assistance is needed, please contact our consumer service team at **1-800-231-9786**.

WARRANTY AND CUSTOMER SERVICE INFORMATION

For service, repair or any questions regarding your appliance, call the appropriate 800 number listed within this section. Please **DO NOT** return the product to the place of purchase. Also, please **DO NOT** mail product back to manufacturer, nor bring it to a service center. You may also want to consult the website listed on the cover of this manual.

Two-Year Limited Warranty (Applies only in the United States and Canada)

What does it cover?

- Any defect in material or workmanship provided; however, Spectrum Brands, Inc.'s liability will not exceed the purchase price of product.

For how long?

- Two years from the date of original purchase with proof of purchase.

What will we do to help you?

- Provide you with a reasonably similar replacement product that is either new or factory refurbished.

How do you get service?

- Save your receipt as proof of date of sale.
- Visit the online service website at www.prodprotect.com/applica, or call toll-free **1-800-231-9786**, for general warranty service.
- If you need parts or accessories, please call **1-800-738-0245**.

What does your warranty not cover?

- Damage from commercial use
- Damage from misuse, abuse or neglect
- Products that have been modified in any way
- Products used or serviced outside the country of purchase
- Glass parts and other accessory items that are packed with the unit
- Shipping and handling costs associated with the replacement of the unit
- Consequential or incidental damages (Please note, however, that some states do not allow the exclusion or limitation of consequential or incidental damages, so this limitation may not apply to you.)

How does state law relate to this warranty?

- This warranty gives you specific legal rights. You may also have other rights that vary from state to state or province to province.

BLACK+DECKER

TM

www.BlackAndDeckerAppliances.com



© 2014 The Black & Decker Corporation
and Spectrum Brands, Inc.,
Middleton, WI 53562

Made and Printed in People's Republic of China

T22-5001089
2014/7/8/38

BLACK & DECKER and the BLACK & DECKER Logo are registered trademarks of The Black & Decker Corporation, or one of its affiliates, and used under license.