

WIRELESS HD NVR DVR KIT



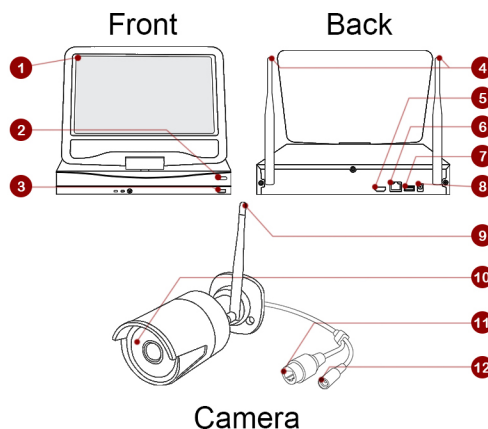
Getting Started

Congratulations on your new product!

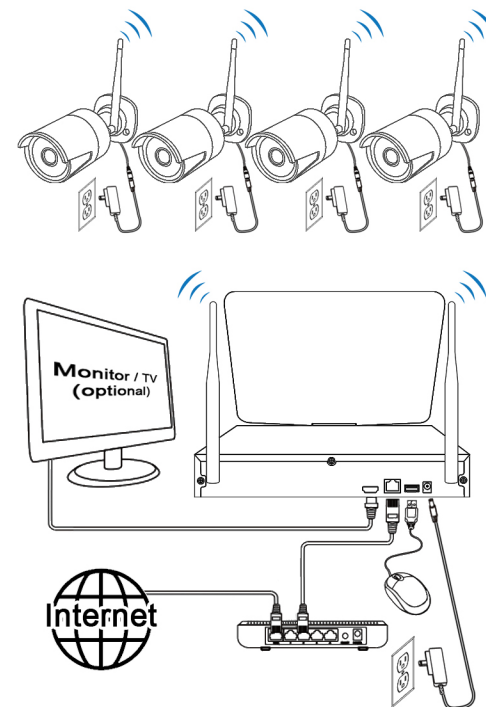
This guide will show you how to set up your system for first time & connection over the internet using a smartphone. Before you actually install anything, we recommend that you connect everything up and give it a try just to make sure nothing was damaged during the shipment.

Packing List

Wireless HD NVR	1 pcs
USB Mouse for NVR	1 pcs
1M (3ft) CAT5e Cable	1 pcs
DV 12V 3A Power Adapter	1 pcs
Quick Installation Guide	1 pcs
Wireless HD Camera	1/ 2/ 3/ 4 pcs
DC 12V 1A Power Adapter	1/ 2/ 3/ 4 pcs
3x Screw	1/ 2/ 3/ 4 pcs



- | | |
|---------------------------|----------------------|
| 1 10.1 in Built-in Screen | 7 Rear USB Port |
| 2 Monitor On / Off Switch | 8 HD NVR Power Port |
| 3 Front USB Port | 9 Camera Antenna |
| 4 HD NVR Antenna | 10 Infrared LED |
| 5 HDMI Output | 11 LAN Port |
| 6 LAN Port | 12 Camera Power Port |

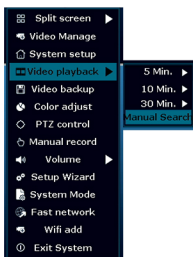


QUICK INSTALLATION GUIDE

Video Playback

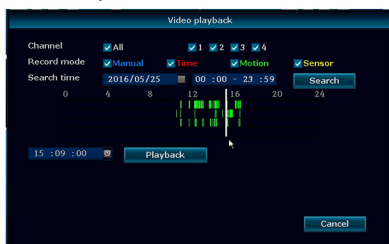
STEP 1

- Use the right click on the mouse to bring up the menu bar.
- Select "Video playback > Manual Search"



STEP 2

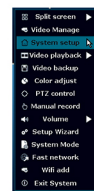
- Select the camera you like to playback
- Select the date / time
- Click "Search" to view the result
- Click on the time frame you will like to start the playback from.
- Click "Playback"



Internet Connection

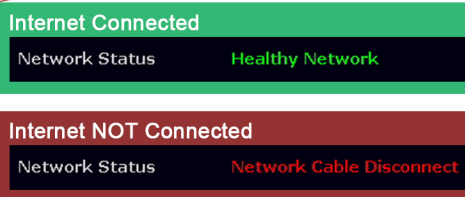
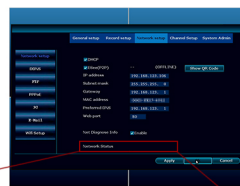
STEP 1

- Connect the NVR to the internet
- Use the right click on the mouse to bring up the menu bar
- Select "System setup"
- Log in using the default ID / PW ID: admin / Password: (blank)



STEP 2

- Select "Network setup" to make sure your system is connected to the internet.



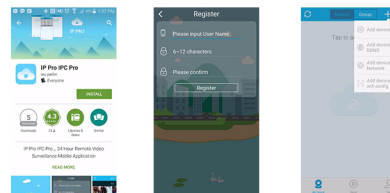
IP Pro



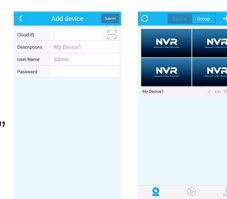
APP Download & Setup



- Download the app "IP Pro"
- Open the app and register
- Once you have log in touch the "+" and select "Add Device by ID"



- Now touch the QR code icon to scan the QR code. (QR code can be found in "System setup > Network setup > Show QR code")
- Once you have scan or manually input the data touch "Submit"

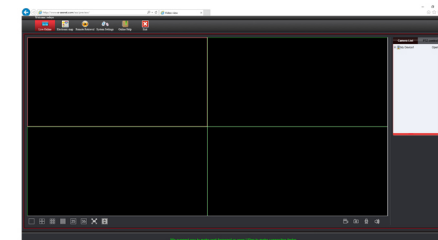
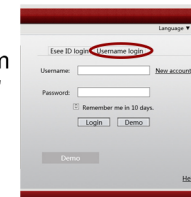


PC Web Viewer



Note: Active X is require

- Open Internet Explorer go to www.e-seenet.com
- Select "Username login" and log in using your ID / Password
- Once you have log in to your account select the cameras to start live view.



For more details visit our website:
www.cvtus.com