



Item # 000 000  
Model # H4340

## USE AND CARE GUIDE

### 1/4" IMPACT DRIVER

Questions, problems, missing parts?  
Before returning to the store, call  
Husky Air Tools Customer Service  
8 a.m – 5 p.m., EST, Monday-Friday

1-877-260-1630

HUSKYTOOLS.COM



---

### THANK YOU

*We appreciate the trust and confidence you have placed in Husky through the purchase of this air tool. We strive to continually create quality products designed to enhance your home. Visit us online to see our full line of products available for your home improvement needs. Thank you for choosing Husky!*

# Table of Contents

<b>Table of Contents</b> .....	<b>2</b>
<b>Safety Information</b> .....	<b>2</b>
Work Area Safety .....	2
Personal Safety .....	2
Personal Safety (Continued).....	3
Air Tool Safety .....	3
<b>Warranty</b> .....	<b>3</b>
Husky Air Tool Limited Two-Year Warranty .....	3
Additional Limitations.....	3
<b>Specifications</b> .....	<b>4</b>
<b>Installation</b> .....	<b>4</b>
<b>Application / Operation</b> .....	<b>5</b>
<b>Maintenance</b> .....	<b>5</b>
<b>Exploded View &amp; Parts List</b> .....	<b>6</b>
<b>Troubleshooting</b> .....	<b>7</b>

## Safety Information

### WORK AREA SAFETY

1. Keep your work area clean and well lit. Ensure floors are not slippery from wax or dust.
2. Do not operate power tools in explosive atmospheres, such as in the presence of flammable liquids, gases, or dust. Power tools create sparks which may ignite the dust or fumes. Keep bystanders, children, and visitors away while operating tools. Distractions can cause you to lose control.
3. Always disconnect the air supply and power supply before making adjustments, servicing a tool, changing an accessory or when a tool is not in use.
4. For further information on the safe use of air tools, we advise you to obtain a copy of CAGI B186.1-2009 from Husky Air Tools  
851 Jupiter Park Lane  
Jupiter, Florida 33458 (877)260-1630

### PERSONAL SAFETY



**WARNING:** Operating any power tool can result in foreign objects being thrown into your eyes, which can result in severe eye damage. Before beginning operation, always wear safety goggles, safety glasses with side shields, or a full face shield when needed. Always use eye protection marked to comply with ANSI Z87.1



**WARNING:** This product contains chemicals known to the State of California to cause cancer and birth defects or other reproductive harm. Wash hands after handling.

1. Use safety equipment. Always wear eye protection with side shields when operating power tools. Dust mask, nonskid safety shoes, hard hat, or hearing protection must be used for appropriate conditions.
2. Stay alert when operating a power tool. Do not use the tool while tired or under the influence of drugs, alcohol, or medication.

# Safety Information (continued)

## PERSONAL SAFETY (CONTINUED)

3. Do not wear loose clothing or jewelry. Contain long hair. Keep your hair, clothing, and gloves away from moving parts. Loose clothes, jewelry, or long hair can be caught in moving parts.
4. Keep proper footing and balance at all times. Proper footing and balance enables better control of the tool in unexpected situations
5. Do not use on a ladder or unstable support

## AIR COMPRESSOR AND AIR TOOL SAFETY



**WARNING:** Do not attempt to modify this tool or create accessories not recommended for use with this tool. Any such alteration or modification is misuse and could result in a hazardous condition leading to possible serious personal injury.



**CAUTION:** Do not use in an environment that is dusty or otherwise contaminated. Using the air compressor in this type of environment may cause damage to the unit.

1. Keep compressors as far from the spraying area as possible, at least 15 ft. from the spraying area and all explosive vapors.

2. Risk of Bursting. Do not adjust regulator to result in output pressure greater than marked maximum pressure of attachment. Do not use at pressure greater than the rated maximum pressure of this compressor.
3. Ensure the hose is free of obstructions or snags. Entangled or snarled hoses can cause loss of balance or footing and may become damaged.
4. Never leave a tool unattended with the air hose attached.
5. Do not operate this tool if it does not contain a legible warning label.
6. Do not continue to use a tool or hose that leaks air or does not function properly.
7. Do not attempt to pull or carry the air compressor by the hose.
8. Never direct a jet of compressed air toward people or animals.
9. Protect your lungs. Wear a face or dust mask if the operation is dusty.

## Warranty

### HUSKY AIR TOOLS LIMITED TWO YEAR WARRANTY

If within two years from the date of purchase, this Husky air tool product fails due to a defect in materials or workmanship, please immediately contact the Customer Service Team at (877)260-1630 8am to 5pm EST, M-F, except normal Holidays). Do not return the air tool to the store. Please be prepared to send the product, postage prepaid, to the address provided by the Customer Service Team. The package must also include a copy of the dated first owner purchase receipt with the air tool model that included and circled. The serial number and month/year of manufacture of the air tool must also be included to determine warranty. A defective product will be promptly replaced with a new one of equal or greater value. This warranty excludes incidental/consequential damages and failures due to misuse, abuse or normal wear and tear. This warranty gives you specific rights, and you may also have other rights, which vary, from state to state.

Please contact the Customer Service Team at (877)260-1630 or visit [www.huskytools.com](http://www.huskytools.com).

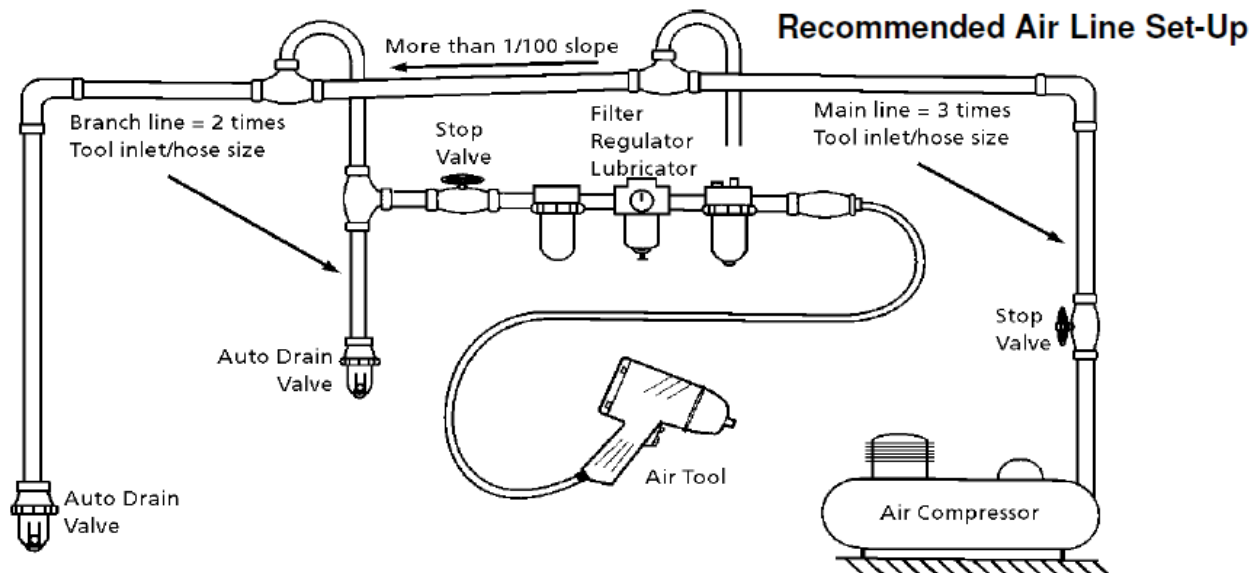
### ADDITIONAL LIMITATIONS

To the extent permitted by applicable law, all implied warranties, including warranties of merchantability or fitness for a particular purpose, are disclaimed. Any implied warranties, including warranties of merchantability or fitness for a particular purpose, that cannot be disclaimed under state law are limited to two years from the date of purchase. Husky is not responsible for direct, indirect, incidental, special or consequential damages. If this air compressor is used for commercial purposes, the warranty will apply for ninety (90) days from the date of purchase. Some states do not allow limitations on how long an implied warranty lasts and/or do not allow the exclusion or limitation of incidental or consequential damages, so the above limitations may not apply to you. This warranty gives you specific legal rights, and you may also have other rights, which vary from state to state.

# Specifications

Max Torque (ft-lb)	Free Speed (RPM)	Weight (lbs)	Length (in)	Air Cons. (CFM)
75 ft-lb	11000	2.2	7.4	4

# Installation



Always use clean dry air. Excessive moisture and dirt will greatly reduce the life of any air motor. We recommend the installation of an in-line filter-regulator-lubricator as close to the tool as possible. A 3/8" air hose is required up to a length of 8 ft. If more length is required a 1/2" air hose should be connected to the 3/8" hose to ensure the tool has the necessary air supply. Be sure all hoses and fittings are the correct size and tightly secured. Before the tool is connected to the air supply, clear the air hose of accumulated dust and moisture. Before removing a tool for service or changing sockets, make sure the air line is shut-off and drained of air. This will prevent the tool from operating if the throttle s accidentally engaged.

# Applications / Operation

## APPLICATIONS

You may use this product for the purposes listed below:

- Driving Screws, lag bolts
- Tightening nuts and bolts
- Removing screws, nuts and bolts

## OPERATION

### Switch Trigger

To turn the impact driver ON, depress the switch trigger. To turn it OFF, release the switch trigger..

### Variable Speed

This tool has a two-step trigger that delivers higher speed with increased trigger pressure. Speed is controlled by the amount of switch trigger depression.

### Direction for Rotation Selector (Forward / Reverse)

The direction of bit rotation is reversible and is controlled by side mounted forward/reverse switch.

### Installing / Removing Bits

To install:

- Remove air supply from the impact driver.
- Pull back the coupler sleeve and insert bit. Release sleeve and bit will lock in place.
- Pull on the bit to ensure it is secured in the coupler.

## Maintenance

### Lubrication

An in-line filter-regulator-lubricator is recommended as it increases tool life and keeps the tool in sustained operation. The in-line lubricator should be regularly checked and filled with air tool oil. Proper adjustment of the in-line lubricator is performed by placing a sheet of paper next to the tools exhaust ports and holding the throttle open approximately 30 seconds. The lubricator is properly set when a light stain of oil collects on the paper.

Excessive amounts of oil should be avoided. In the event that it becomes necessary to store the tool for an extended period of time (overnight, weekend, etc.), it should receive a generous amount of lubrication through the air inlet. The tool should be run for approximately 30 seconds to ensure oil has been evenly distributed throughout the tool. The tool should be stored in a clean and dry environment.

Recommended lubricants: Use air tool oil or any other high grade turbine oil containing moisture absorbent, rust inhibitors, metal wetting agents and an EP (extreme pressure) additive.

There may be some play in the installed bit; this is normal.

NOTE: Use only impact quality bits with a locking groove.



**WARNING:** Make sure the bit is secured in the coupler before using the impact driver. Failure to do so could cause serious personal injury.

To remove:

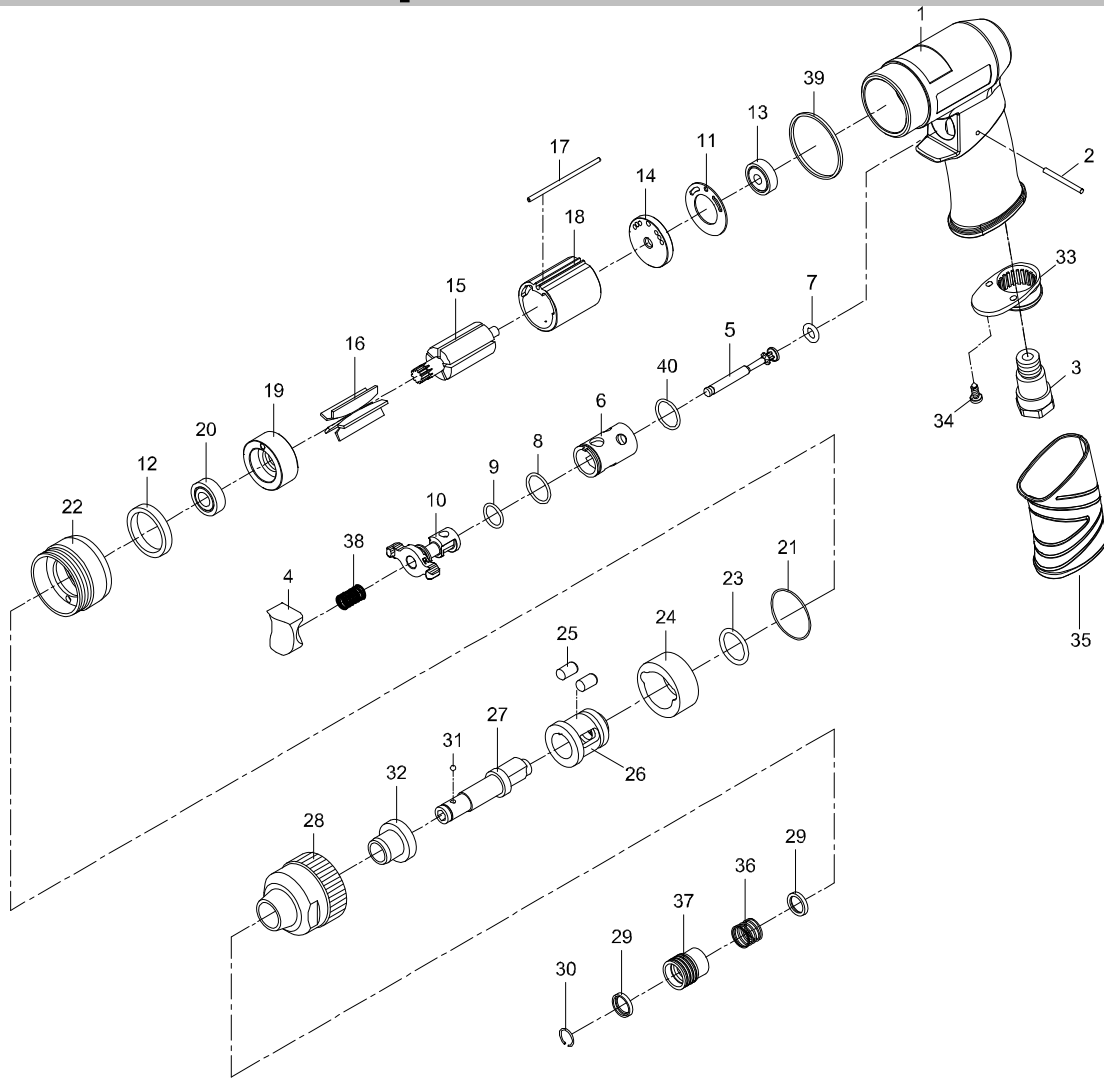
- Remove the air supply from the impact driver.
- With the nose of the tool pointed away from you, pull the coupler sleeve back.
- The bit can be removed.

### Driving or Removing Screws

- Place the direction of rotation selector in the correct position for the operation.
- Hold the impact driver with one hand.
- Place the bit on the screw head and slowly depress the switch trigger. Start the bit slowly for more control.
- As screw is driven, impacting will begin.



# Exploded View & Replacement Parts



Index No.	Parts No.	Description	Index No.	Parts No.	Description
1	948-830001	Motor Housing	21	9OR03200100	O-Ring
2	9822202	Pin	22	940-725328	Clamp Nut
3	970103	Air Inlet	23	9OR01872262	O-Ring
4	975-725304	Trigger	24	940-725311	Hammer
5	948-830005	Valve Stem	25	940-725317	Hammer Pin (2)
6	975-725306	Valve Bushing	26	940-725308	Hammer Cage
7	970107	O-Ring	27	948-725302	Anvil
8	9795820	O-Ring	28	940-725332	Hammer Case
9	980209	O-Ring	29	948-401444	Washer (2)
10	975-725310	Reverse Lever	30	980230	Retaining Ring
11	980211	Motor Gasket	31	940145	Steel Ball
12	940-725327	Washer	32	940-725325	Anvil Bushing
13	9030113	Ball Bearing	33	970110	Exhaust Diffuser
14	975-725314	Rear End Plate	34	940309	Screw (2)
15	940-725315	Rotor	35	975-730052	Grip
16	980216	Rotor Blade (5)	36	9AS000156	Spring
17	948-830017	Pin	37	948-725342	Ball Retainer
18	948-830018	Cylinder	38	982208	Valve Spring
19	940-725319	Front End Plate	39	975-725351	Decoration Ring
20	9070130	Ball Bearing	40	972009	O-Ring

# Troubleshooting

Problem	Possible Cause	Solution
Tool runs slowly or will not operate	<input type="checkbox"/> Grit or gum in tool	<input type="checkbox"/> Flush the tool with air tool oil or gum solvent.
	<input type="checkbox"/> No oil in tool	<input type="checkbox"/> Lubricate the tool according to the lubrication instructions in this manual.
	<input type="checkbox"/> Low air pressure	<input type="checkbox"/> Adjust the regulator on the tool to the maximum setting. <input type="checkbox"/> Adjust the compressor regulator to tool maximum of 90 psi.
	<input type="checkbox"/> Air hose leaks	<input type="checkbox"/> Tighten and seal hose fittings if leaks are found use pipe thread tape.
	<input type="checkbox"/> Pressure drops	<input type="checkbox"/> Be sure the hose is the proper size. Long hoses or tools using large volumes of air may require a hose with an I.D. of 1/2" or larger depending on the total length of the hose. <input type="checkbox"/> Do not use a multiple number of hoses connected together with quick connect fitting. This causes additional pressure drops and reduces the tool power. Directly connect the hoses together.
	<input type="checkbox"/> Worn rotor blade in motor	<input type="checkbox"/> Replace rotor blade.
	<input type="checkbox"/> Worn ball bearing in motor	<input type="checkbox"/> Remove and inspect bearing for rust, dirt and grit. Replace or clean and grease bearing with bearing grease.
Moisture blowing out of tool exhaust.	<input type="checkbox"/> Water in tank.	<input type="checkbox"/> Drain tank. (See air compressor manual). Oil tool and run until no water is evident. Oil tool again and run 1-2 seconds.
<b>Impact Wrenches</b>		
Impacts slowly or will not impact.	<input type="checkbox"/> Lack of lubrication.	<input type="checkbox"/> Lubricate the air motor and the impact mechanism. (See Lubrication section of this manual).
	<input type="checkbox"/> Tool regulator setting in wrong position.	<input type="checkbox"/> Adjust the regulator on the tool to the maximum setting.
Impacts rapidly but will not remove bolts.	<input type="checkbox"/> Worn impact mechanism.	<input type="checkbox"/> Replace worn impact mechanism components.
Does not impact.	<input type="checkbox"/> Broken impact mechanism.	<input type="checkbox"/> Replace broken impact mechanism components.



Questions, problems, missing parts? Before returning to the store call  
Husky Air Tools Customer Service  
8 a.m. - 5 p.m., EST, Monday-Friday

**1-877-260-1630**

**HUSKYTOOLS.COM**

Retain this manual for future use.

**H4340 2012**