



# GreatNeck®

## 7" Sander/Polisher



- Operating/Safety Instructions
- Instrucciones de funcionamiento y seguridad

**Limited One Year Warranty**

### **WARNING**

For your own safety, read this instruction manual before operating the tool. Save this manual.

### **ADVERTENCIA**

Para su seguridad, lea cuidadosamente este manual de instrucciones antes de utilizar la herramienta. Guarde este manual.

# English

Introduction	3
Description of symbols	3
Specifications	3
General safety instructions	4
Additional safety rules for sander/polishers	5
Accessories	6
Unpacking	6
Assembly	6
Know your product	7
Setting up	8
Operation	8
Switching on and off	8
Applications	8
Operation in sander mode	9
Attaching the sanding pad	9
Fitting the sandpaper	9
Selecting the right grade of sandpaper	9
Holding and guiding the tool	9
Preparing the surface	10
Attaching the bonnets	10
Attaching the application sponge	10
Applying polish to the application sponge	10
Applying polish to surfaces	10
Attaching the polishing bonnet	10
Using the polishing bonnet	10
Troubleshooting	11
Maintenance	12
Cleaning	12
General inspection	12
Repairs	12
Parts breakdown	13

## ONE YEAR LIMITED WARRANTY

For one year from the date of purchase of this GreatNeck® product you find any defect in material or workmanship, through normal usage, either return it to the place of purchase, or send it to GreatNeck® Tools LLC. for repair or replacement at our discretion. In order to obtain this service send your tool and proof of purchase, transportation pre-paid, to GreatNeck® Tools LLC Q.A. Dept, 3580 E. Raines Rd. #3, Memphis, TN 38118. This warranty gives you specific legal rights, and you may also have other rights, which vary from state to state.

GreatNeck® will not be responsible for any consequential or incidental damages arising from the breach of this or any other warranty, whether expressed, implied or statutory.

**Some states do not allow the exclusion or limitation of consequential or incidental damages, so the above exclusion may not apply to you. This warranty gives you specific legal rights, and you may also have other rights which vary from state to state.**

This product is not guaranteed if used for industrial or commercial purposes.

## Dear Customer

If you require any help with your product, whether it is a Warranty claim, spare part or user information, please phone our Help Line 1-866-458-2472 for an immediate response.

## Introduction

Your new GREAT NECK power tool will more than satisfy your expectations. It has been manufactured under stringent GREAT NECK Quality Standards to meet superior performance criteria.

You will find your new tool easy and safe to operate, and, with proper care, it will give you many years of dependable service.

**CAUTION.** Carefully read through this entire Instruction Manual before using your new GREAT NECK Power Tool. Take special care to heed the Cautions and Warnings.

Your GREAT NECK power tool has many features that will make it possible to finish your job faster and easier. Safety, performance and dependability have been given top priority in the development of this tool, making it easy to operate and maintain.

## Environmental protection



Recycle unwanted materials instead of disposing of them as waste. All tools, hoses and packaging should be sorted, taken to the local recycling center and disposed of in an environmentally safe way.

## Description of symbols

The rating plate on your tool may show symbols. These represent important information about the product or instructions on its use.



Wear hearing protection.

Wear eye protection.

Wear breathing protection.



Double insulated for additional protection.



Tool is listed by Intertek Testing Services, and listed to U.S. standards by Intertek Testing Services

## Specifications

Voltage:	120V ~ 60Hz
Input power:	11 Amp / 1300W
No load speed:	1000–3000 RPM
Disc Size:	7 inch
Bore Size:	5/8" (15.87mm)
Spindle Lock:	Yes
Auxiliary Handle:	D type grip
Insulation:	Double insulated
Weight:	8 lbs
V :	volts
A :	ampere
Hz :	hertz
~ :	alternating current

This tool is double insulated. There are two independent barriers of insulation to protect you from the possibility of electric shock.

## General safety instructions


**WARNING!** Read and understand all instructions. Failure to follow all instructions listed below, may result in electric shock, fire and/or serious personal injury.

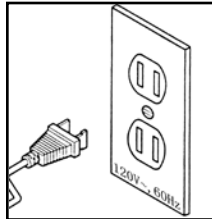
## Save these instructions.

### WORK AREA

- **Keep your work area clean and well lit.** Cluttered benches and dark areas invite accidents.
- **Do not operate power tools in explosive atmospheres, such as in the presence of flammable liquids, gases, or dust.** Power tools create sparks which may ignite the dust or fumes.
- **Keep bystanders, children, and visitors away while operating a power tool.** Distractions can cause you to lose control.

### ELECTRICAL SAFETY

- **Double Insulated tools are equipped with a polarized plug (one blade is wider than the other.) This plug will fit in a polarized outlet only one way. If the plug does not fit fully in the outlet, reverse the plug. If it still does not fit, contact a qualified electrician to install a polarized outlet. Do not change the plug in any way.** Double Insulation  eliminates the need for the three wire grounded power cord and grounded power supply system.
- **Avoid body contact with grounded surfaces such as pipes, radiators, ranges and refrigerators.** There is an increased risk of electric shock if your body is grounded.
- **Don't expose power tools to rain or wet conditions.** Water entering a power tool will increase the risk of electric shock.
- **Do not abuse the cord. Never use the cord to carry the tools or pull the plug from an outlet. Keep cord away from heat, oil, sharp edges or moving parts. Replace damaged cords immediately.** Damaged cords increase the risk of electric shock.



- **When operating a power tool outside, use an outdoor extension cord marked “W-A” or “W”.** These cords are rated for outdoor use and reduce the risk of electric shock.

### PERSONAL SAFETY

- **Stay alert, watch what you are doing and use common sense when operating a power tool. Do not use tool while tired or under the influence of drugs, alcohol, or medication.** A moment of inattention while operating power tools may result in serious personal injury.
- **Dress properly. Do not wear loose clothing or jewelry. Contain long hair. Keep your hair, clothing, and gloves away from moving parts.** Loose clothes, jewelry, or long hair can be caught in moving parts.
- **Avoid accidental starting. Be sure switch is off before plugging in.** Carrying tools with your finger on the switch or plugging in tools that have the switch on invites accidents.
- **Remove adjusting keys or wrenches before turning the tool on.** A wrench or a key that is left attached to a rotating part of the tool may result in personal injury.
- **Do not overreach. Keep proper footing and balance at all times.** Proper footing and balance enables better control of the tool in unexpected situations.
- **Use safety equipment. Always wear eye protection.** Dust mask, non-skid safety shoes, hard hat, or hearing protection must be used for appropriate conditions.

### TOOL USE AND CARE

- **Use clamps or other practical way to secure and support the workpiece to a stable platform.** Holding the work by hand or against your body is unstable and may lead to loss of control.
- **Do not force tool. Use the correct tool for your application.** The correct tool will do the job better and safer at the rate for which it is designed.
- **Do not use tool if switch does not turn it on or off.** Any tool that cannot be controlled with the switch is dangerous and must be repaired.

- **Disconnect the plug from the power source before making any adjustments, changing accessories, or storing the tool.** Such preventive safety measures reduce the risk of starting the tool accidentally.
- **Store idle tools out of reach of children and other untrained persons.** Tools are dangerous in the hands of untrained users.
- **Maintain tools with care. Keep cutting tools sharp and clean.** Properly maintained tools, with sharp cutting edges are less likely to bind and are easier to control.
- **Check for misalignment or binding of moving parts, breakage of parts, and any other condition that may affect the tool's operation. If damaged, have the tool serviced before using.** Many accidents are caused by poorly maintained tools.
- **Use only accessories that are recommended by the manufacturer for your model.** Accessories that may be suitable for one tool, may become hazardous when used on another tool.

## SERVICE

- **Tool service must be performed only by qualified repair personnel.** Service or maintenance performed by unqualified personnel could result in a risk of injury.
- **When servicing a tool, use only identical replacement parts. Follow instructions in the Maintenance section of this manual.** Use of unauthorized parts or failure to follow Maintenance Instructions may create a risk of electric shock or injury.

## Additional safety rules for sander/polishers

**WARNING** Some dust created by power sanding, sawing, grinding, drilling, and other construction activities contains chemicals known to cause cancer, birth defects or other reproductive harm.

- Accessories must be rated for at least the speed recommended on the tool warning label. Wheels and other accessories running over rated speed can fly apart and cause injury
- Hold tool by insulated gripping surfaces when performing an operation where the cutting tool may contact hidden wiring or its own cord. Contact with a “live” wire will make exposed metal parts of the tool “live” and shock the operator.
- Know your power tool. Read instruction manual carefully.
- Always wear safety glasses.
- Wear a face or dust mask if the operation is dusty.
- Wear hearing protection during extended periods of operation.
- When an extension cable is required, you must ensure it has the right ampere rating for your power tool and is in a safe electrical condition.
- Do not abuse the cord, never carry the tool by the cord or yank it to disconnect it from the outlet.
- Always switch off before you put the tool down.
- Do not let anyone under 18 years operate this tool.
- If possible, always use clamps or a vice to hold your work.
- Rags, cloths, cord, string and the like should never be left around the work area.
- If you are interrupted when operating the tool, complete the process and switch off before looking up.
- Periodically check that all nuts, bolts and other fixings are properly tightened.
- Always use both hands to operate the tool.

- Do not force the tool, let the tool do the work at a reasonable speed. Overloading will occur if too much pressure is applied and the motor slows resulting in inefficient operation and possible damage to the motor.
- Do not continue to use worn, torn or heavily clogged sanding discs.
- Do not touch the moving disc.
- Ensure that you have removed foreign objects such as nails and screws from the work piece before commencing sanding.

### EXTENSION CORDS

- Replace damaged cords immediately. Use of damaged cords can shock, burn or electrocute.
- If an extension cord is necessary, a cord with adequate size conductors should be used to prevent excessive voltage drop, loss of power or overheating. The table shows the correct size to use, depending on cord length and nameplate amperage rating of tool. If in doubt, use the next heavier gauge. Always use U.L. and CSA listed extension cords.

RECOMMENDED SIZES OF EXTENSION CORDS					
Tool's Ampere rating	Volts	Total length of cord in feet Cord size in A.W.G.(minimum)			
		25ft	50ft	100ft	150ft
3-6	120V~	18	16	16	14
6-8	120V~	18	16	14	12
8-10	120V~	18	16	14	12
10-12	120V~	16	16	14	12
12-16	120V~	14	12	-	-

### Accessories

The GREAT NECK 80127 sander/polisher is supplied with the following accessories as standard:

- D-Grip Handle
- Sanding Disc
- Terry Cloth Bonnet
- Wool Bonnet
- Sanding Paper
- Instruction Manual
- Spanner - 6
- 2 Screw ST4 x 15
- Sponge Pad

### Unpacking

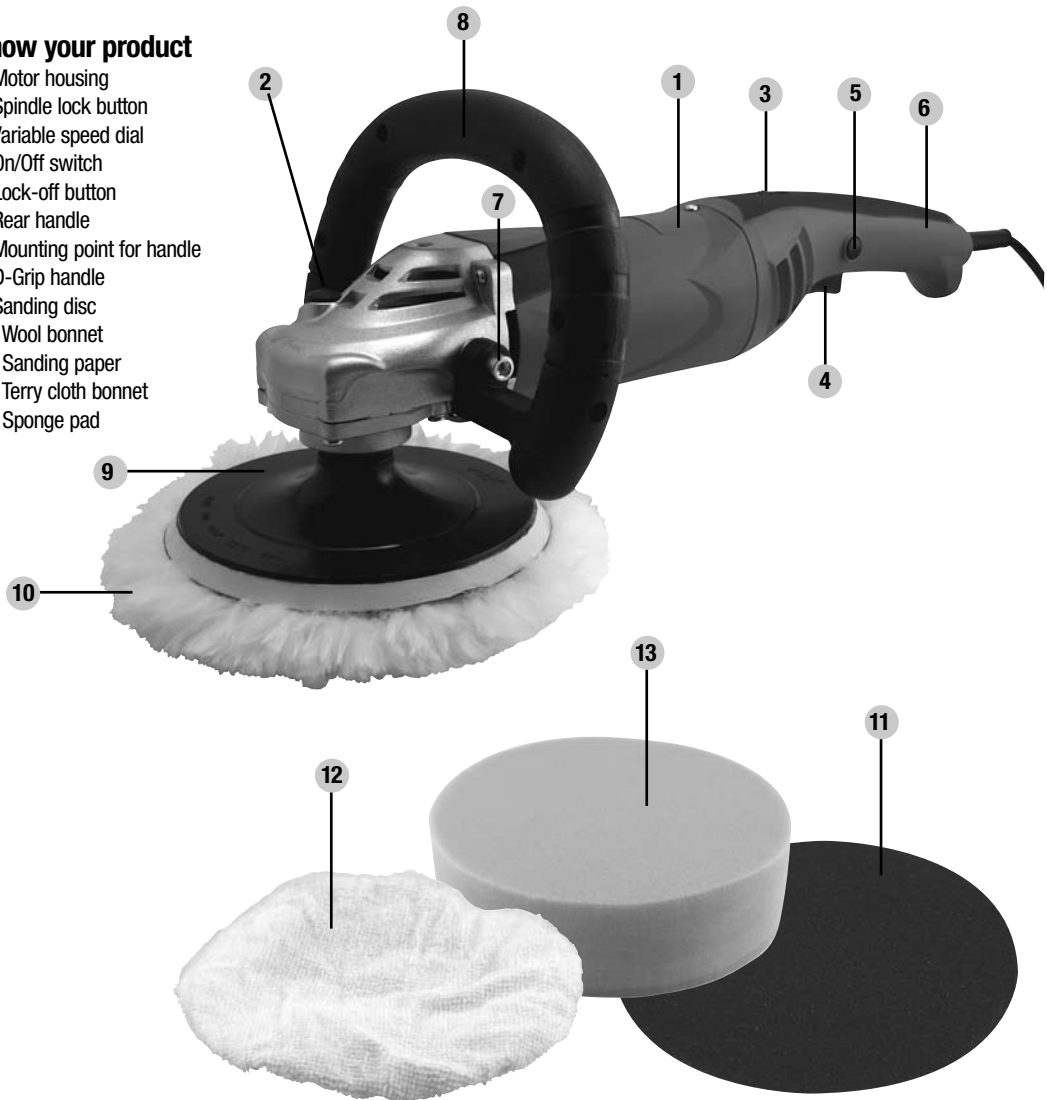
Due to modern mass production techniques, it is unlikely that your GREAT NECK Power Tool is faulty or that a part is missing. If you find anything wrong, do not operate the tool until the parts have been replaced or the fault has been rectified. Failure to do so could result in serious personal injury.

### Assembly Time

The GREAT NECK sander/polisher is packed, fully assembled apart from the accessories. To fit an accessory will take approximately 2-3 minutes. To change from one accessory to another will take approximately 5 minutes.

## Know your product

1. Motor housing
2. Spindle lock button
3. Variable speed dial
4. On/Off switch
5. Lock-off button
6. Rear handle
7. Mounting point for handle
8. D-Grip handle
9. Sanding disc
10. Wool bonnet
11. Sanding paper
12. Terry cloth bonnet
13. Sponge pad



## Setting up

### D-Grip handle

Screw the D-Grip handle (8) into the mounting point (7) (left side and right side). Ensure that the handle is fully screwed in place and firm.



## Operation

### Variable Speed

1. The 80127 is fitted with a variable speed dial (3) that allows the speed to be adjusted to suit the application and material.
2. The tool operates between the speeds of 1000 RPM and 3000 RPM.
3. The higher the number on the variable speed dial, the higher the speed.
4. For polishing and buffing applications it is recommended that a lower speed (1000-1500 RPM) is used.
5. For sanding applications it is recommended that the high speed (3000 RPM) is used to provide efficient material removal.



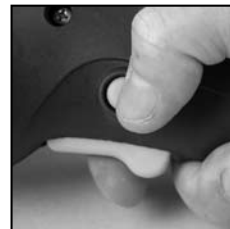
**WARNING.** Do not operate the machine with a polishing bonnet attached above 1500 RPM.

### Switching on and off

1. Before starting the sander/polisher, first ensure the accessory and the tool are in good condition. Plug the cordset into the mains socket and set up for the application to be performed.
2. Hold the tool firmly.
3. Press the lock-off button (5) and then press the on/off switch (4)



4. To adjust the speed, rotate the variable speed dial (3).
5. To turn the tool off, release the on/off switch.
6. The sander/polisher will stop. (Please note that the disc continues to turn for a few seconds even though the switch is turned off). Keep hands well away from the moving disc. Do not place the sander/polisher down until the disc has come to a complete stop.



## Applications

The GREAT NECK sander/polisher is suited to numerous applications. The sanding disc can be used to efficiently sand numerous work pieces while the polishing accessories can be used to polish or buff most high-gloss surfaces. The application sponge and polishing bonnet are manufactured to apply and remove polishes and waxes evenly. Some of the most common applications include:

- Cars
- Boats
- Personal Aircraft
- Motorcycles
- Hardwood Floors
- Furniture



## Operation in sander mode

### Attaching the sanding pad

Switch off the tool and disconnect it from the power supply.

1. The sanding pad is fitted with a quick release disc system meaning that no tools are required.
2. To fit the sanding pad (9) onto the spindle press and hold the spindle lock button (2) and screw the sanding pad onto the spindle in a clockwise direction. Turn the pad by hand, ensuring that it is tight on the spindle and that it rotates fully and does not wobble unduly.



3. To remove the sanding pad, press and hold the spindle lock button (2) and unscrew the pad from the spindle. Note that the pad unscrews in an anti-clockwise direction.
4. Run the sander/polisher at no load for at least one minute to ensure the new sanding pad is in good condition. Make sure you are wearing all the safety gear and that you face the sander/polisher away from you.

### Fitting the sandpaper

Switch off the tool and disconnect it from the power supply.

1. The GREAT NECK sander/polisher is fitted with a hook & loop sanding pad (9) allowing easy changing of accessories. Ensure there are no debris left in the hooks & loops of the pad before fitting accessories.
2. Align the sandpaper with the sanding pad and press down firmly to ensure a good grip.
3. Special care must be taken with Hook & Loop pads, as a build up of dust, or wearing the sandpaper down completely before changing it, can result in damage to the hooks & loops on the



pad and require a new pad to be fitted.

**Note.** Hook & Loop pads are not a warranty item.

### Selecting the right grade of sandpaper

Switch off the tool and disconnect it from the power supply.

1. Different grades of sandpaper can be purchased from your local hardware store.
2. Typical grades are coarse (40–60 grit), medium (80–100 grit), and fine (120–240 grit).
3. Use coarse grade to remove rough finishes, medium grade to smooth the work, and fine grade to finish it off.
4. It is best to make a trial run on a scrap piece of material to determine the optimum grades of sandpaper for a particular job.

### Holding and guiding the tool

1. Always clamp the work piece where applicable.
2. Before starting the tool, first ensure the sanding pad, sanding disc and the tool are in good condition. Plug the cordset into the mains socket.
3. To start the tool squeeze the on/off trigger (4).
4. Do not overload the tool so that the disc slows down. Let the tool do the work rather than applying pressure. The weight of the tool alone provides sufficient pressure.
5. Hold the tool securely and make sure that you have full control at all times.
6. During the sanding operation, maintain an angle of 10–15 degrees between the tool and the work piece.
7. After completing the application, turn the sander/polisher off. To turn the tool off let go of the on/off switch (4). The tool will stop. (Please note that the disc continues to spin for a few seconds even though the switch is turned off). Keep hands well away from the moving disc



## Operation in polisher mode

### Preparing the surface

For optimum results, ensure that the surface is clean and dry before polishing. Most high-gloss surfaces can be cleaned with a mild soap and water solution. A mild ammonia such as that used in glass cleaners can be used to remove stubborn dirt such as road tar, grease and bug stains.

**WARNING.** Always check the label for recommended applications before using a cleaning product. Using the incorrect product for the application may damage the surface. Use only recommended car care products.

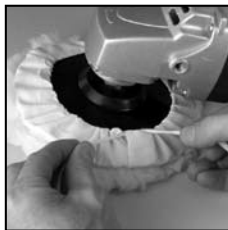
Never apply cleaner directly onto the surface to be polished. Apply to a clean cloth and then use the cloth to clean the surface.

### Attaching the bonnet

The GreatNeck® sander/polisher is supplied with polishing bonnet used for fine buffing and to finish the surface.

### Attaching the polishing bonnet

1. The polishing bonnet is used for buffing and finishing the surface.
2. The polishing bonnet is fitted over the sanding disc (9).
3. To fit the sanding disc turn the sander/polisher upside down.
4. Place the sanding disc onto the spindle making sure that it fits securely.
5. Fit the polishing bonnet over the top of the sanding disc and ensure that the outer edge is drawn over the top of the sanding disc.
6. Turn the sander/polisher over.
7. Run the sander/polisher at no load for at least one minute to ensure the sanding disc



and polishing bonnet are in good condition. Make sure you are wearing all the safety gear and that you face the sander/pollisher away from you.

### Using the polishing bonnet

1. Before starting the tool, first ensure the polishing bonnet and tool are in good condition. Plug the cordset into the main socket.
2. Ensure the variable speed dial is set to the slowest speed.
3. Hold the sander/polisher firmly against the surface and squeeze the on/off trigger (4).
4. Always start and stop the sander/polisher on or against the surface being buffed.
5. Begin by buffing larger flat surfaces, such as hood, trunk, and roof. Use a broad sweeping motion in a criss-cross pattern.
6. Do not press down on the surface with the sander/polisher. Do not overload the tool so that the disc slows down. Let the tool do the work rather than applying pressure. The weight of the tool alone provides sufficient pressure.
7. Once flat surfaces have been covered, buff curved surfaces such as car doors and quarter panels. Use small circular motions.
8. After buffing the entire surface turn the tool off and let go of the on/off switch (4). The tool will stop. (Please note that the disc continues to spin for a few seconds even though the switch is turned off.) Keep hands well away from the moving disc.
9. Wait until the pad stops rotating before lifting the sander/polisher from the surface.
10. Unplug the sander/polisher.
11. Buff surfaces by hand for hard to reach areas, such as the underside of bumpers or side mirrors.

## Trouble shooting

### Warning!

Turn the on/off switch to the off position and unplug the tool from the power supply before performing trouble shooting procedures.

<b>Troubleshooting</b>		
<b>Trouble</b>	<b>Problem</b>	<b>Suggested remedy</b>
Sander/polisher will not start	Power cord not plugged in	Ensure that the cord is connected to the power supply
	Power fault, fuse or circuit breaker tripped	Check the power supply
	Cord damaged	Use authorized service center to repair or replace
	Faulty switch	Use authorized service center to repair or replace switch
	Faulty motor	Use authorized service center to repair or replace motor
Poor performance	Extension cord too long or undersized	Use extension cord heavy enough to carry the current
	Tool is overheating	Turn off the tool and let it cool down to room temperature. Inspect and clean the ventilation slots
	Too much wax on the polishing sponge	Replace or clean the accessory. Ensure that too much polish is not applied onto the accessory. Remove a portion of wax and retry
	Polishing bonnet or buffing wheel worn	Replace with new bonnet or buffing wheel
Vibration or abnormal noise	Accessory not secured	Ensure that the accessory is secured onto the spindle and that all flanges are tight
	Loose screws	Ensure that all fixing screws are fully tightened

## Maintenance

**WARNING.** Always ensure that the tool is switched off and the plug is removed from the power point before making any adjustments or maintenance procedures.

- Avoid using solvents when cleaning plastic parts, most plastics are susceptible to damage from various types of commercial solvents and may be damaged by their use.
- Use clean cloth to remove dirt and carbon dust.
- Do not at any time allow brake fluids, gasoline, petroleum-based products or penetrating oils to come into contact with plastic parts. They contain chemicals that can damage, weaken or destroy plastic.
- Allow the pad to dry completely after each use.
- Be careful not to use too much polish at one time, if the sponge becomes saturated it will not last as long.

## Cleaning

1. Keep the tool's air vents unclogged and clean at all times.
2. Remove dust and dirt regularly. Cleaning is best done with a rag.
3. Never use caustic agents to clean plastic parts.

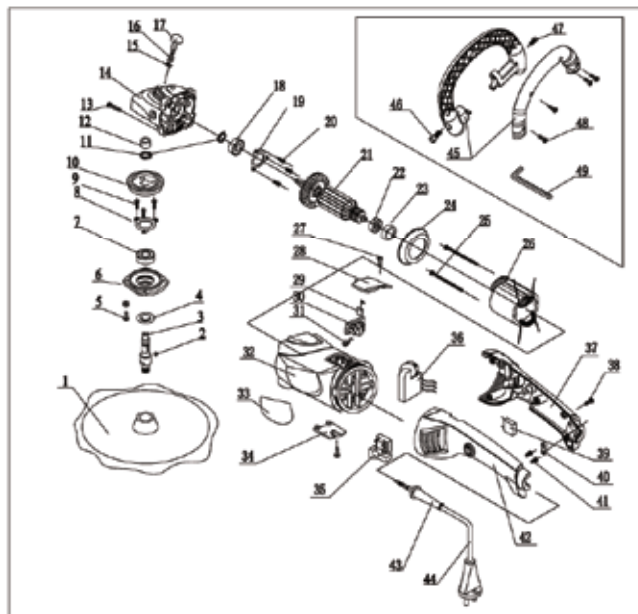
**CAUTION.** Do not use cleaning agents to clean the plastic parts of the tool. A mild detergent on a damp cloth is recommended. Water must never come into contact with the tool.

## General inspection

Regularly check that all the fixing screws are tight. They may vibrate loose over time.

## Repairs

Only an authorized service center should replace the cordset or carry out other repairs. If the cordset is damaged or worn, have it repaired or replaced by an authorized service center.



Item No.	Part Name	Qty	Item No.	Part Name	Qty	Item No.	Part Name	Qty
1	Polishing Disc	1	21	Aeromotor	1	41	Screw ST4x13	2
2	Woodruff/Key (x5x13)	1	22	Bearing 608	1	42	Back Housing	1
3	Output Spindle	1	23	Rubber Bush	1	43	Rubber Sleeve	1
4	Card	1	24	Pin Guide	1	44	Card	1
5	Screw M5x14	4	25	Screw ST4x25	2	45	Side Handle	1
6	Flare Cover	1	26	Stator	1	46	Screw M5x30	1
7	Bearing 6201	1	27	Screw ST4x13	2	47	Screw M5x25	1
8	Bearing Cover	1	28	Up-Carbon Cap	1	48	Screw ST4x15	4
9	Screw M4x19	3	29	Carbon Brush	2	49	Spanner-6	1
10	Big Gear	1	30	Brush Holder	2			
11	Clutch For Shaft 12	2	31	Spring	1			
12	Flare Cover	1	32	Plastic Housing	1			
13	Screw ST4x22	4	33	Name Plate	2			
14	Rubber	1	34	Down-Carbon Cap	1			
15	"U" Ring 6	1	35	Switch	1			
16	Spring	1	36	Starter Of Slower	1			
17	Brake Pin	1	37	Back Housing	1			
18	Bearing 6201	1	38	Screw ST4x20	5			
19	Bearing Cover	1	39	Condenser	1			
20	Screw M5x30	3	40	Coil Clip	1			

---

**Carefully read the entire Instruction Manual  
before using this product.**

Lea cuidadosamente este manual de instrucciones antes de  
utilizar el producto.

**CUSTOMER SERVICE TOLL FREE HELPLINE:**

**1-866-458-2472**

**Save this manual for future reference.**

Guarde este manual para consultas en el futuro.



GREAT NECK Warranty Dept.

3580 E. Raines Rd. #3

Memphis, TN 38118

Distributed by Great Neck Tools, LLC, Memphis, TN 38103

Great Neck and the Great Neck logo are registered trademarks of Great Neck Saw Mfrs., Inc.