

INSTALLATION GUIDELINES

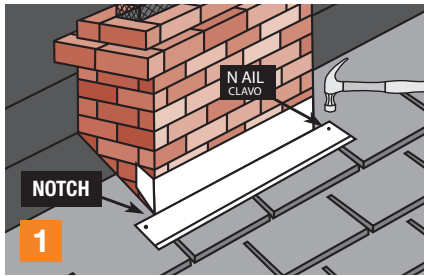
CHIMNEY FLASHING KIT

The Appleton Chimney Flashing Kit contains materials to correctly flash a typical one-flue brick chimney of any size up to 32" by 32".

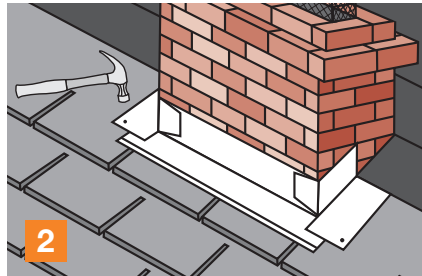
Includes:

- 1 pc. – 32" Top Flashing
- 1 pc. – 32" Base Flashing
- 4 pcs. – 32" Side Flashing
- 12 pcs. – 6" x 8" Step Flashings

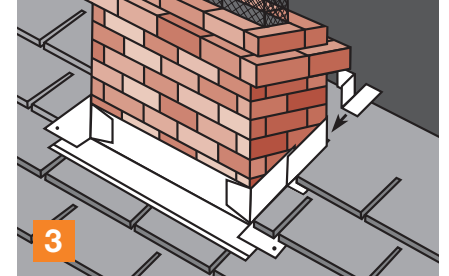
Additional Items Required:



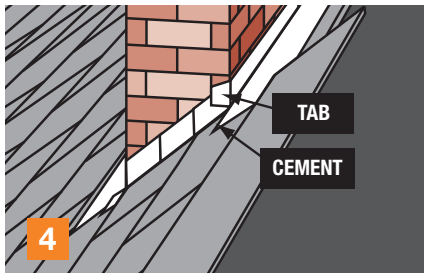
After shingles are installed according to building codes, extend base flashing approximately 4" past each end of chimney as shown. Cut notches on both ends, bending tabs to meet chimney sides. Attach flashing to roof at each end with galvanized roofing nail as shown, leaving upper portion unattached.



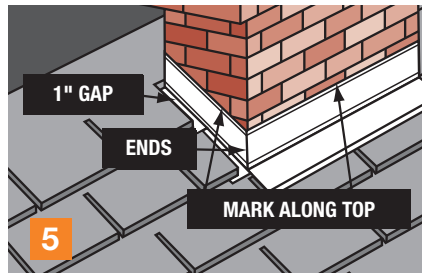
Notch step flashing, then bend as shown and place over shingle and base flashing. Bend remaining tab around to front. Seal underneath step flashing with a high-quality plastic roofing cement. Attach flashing to roof with galvanized roofing nail as shown, leaving upper portion unattached.



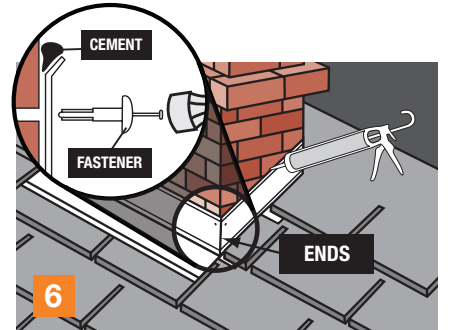
Following the above steps, install step flashing and shingles down length of chimney as shown. Cut step flashing to fit, then bend tab to fit along back wall. Again, apply plastic roofing cement to seal flashing to roof. Nail flashing to roof portion only.




Extend flashing past both ends of chimney by at least 3". After cutting at the crease and turning the tabs toward chimney sides, nail onto roof only.
Note: Flashing must continue above shingle rain openings.



Mark and align top of counter flashings around entire chimney. Be sure to leave a 1" gap between shingles and bottoms of side flashings. Check that corners are watertight before trimming excess. Fill gaps with plastic roofing cement.



See Inset: Attach counter flashing to chimney using steel masonry fasteners of your choice. Read fastener manufacturer's instructions for proper installation into masonry, which may include drilling and nailing into mortar joints. Seal top of counter flashing with a liberal bead of plastic roofing cement. The trough is designed to hold sealant. Examine entire chimney base for water penetration and seal as needed, including ends.



CAUTION! Working above grade is inherently dangerous, be sure that proper fall protection measures are in place. When working with power tools and sheet metal, gloves and eye protection are absolutely required.