

INSTALLATION

GLACIER BAY
For Models: 209-442



TOOLS:

- Pipe tape
- Adjustable wrench
- Plumbers Putty
- Groove joint plier
- Phillip screwdriver

SAFETY TIPS

- If soldering during faucet installation, the seats, cartridges and washers will have to be removed before using flame. Otherwise, warranty will be void on these parts.
- Protect your eyes with safety glasses when cutting or soldering water supply lines.
- Cover your drain to avoid losing parts.
- When installing flexible hose, please notice: there should be no torsion or deformation; do not fold into shape V or L; do not use if there is any crack or deformation.

THINGS YOU MAY NEED

All installations can vary depending on how your previous faucet was installed. Not all supplies for faucet installation are included; however they are available wherever plumbing supplies are sold. When choosing your installation supplies, make sure they are IAPMO and/or CSA approved products.

Need help?
For additional assistance or service call:
1 888 328-2383 USA 1 800 487-8372 CAN

WHAT YOU NEED TO KNOW

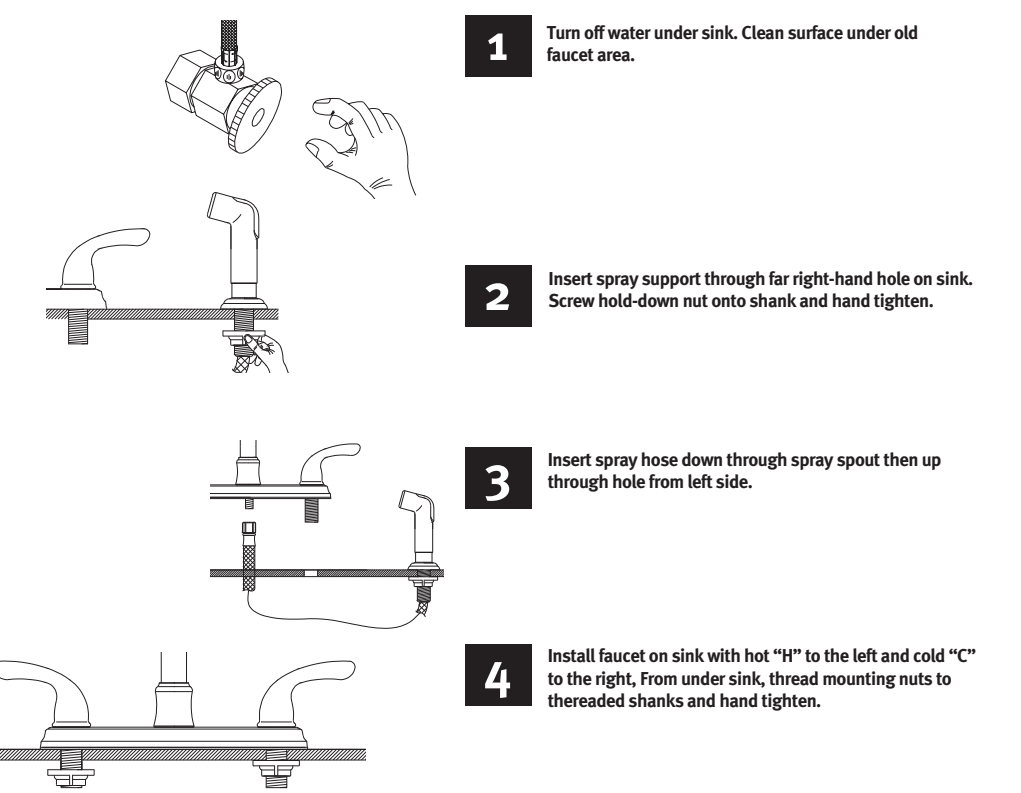
MAINTENANCE

Your new kitchen faucet is designed for years of troublefree performance. Keep it looking new by cleaning it periodically with a soft cloth. Avoid abrasive cleaners, steel wool and harsh chemicals as these will dull the finish and void your warranty.

IMPORTANT POINTS

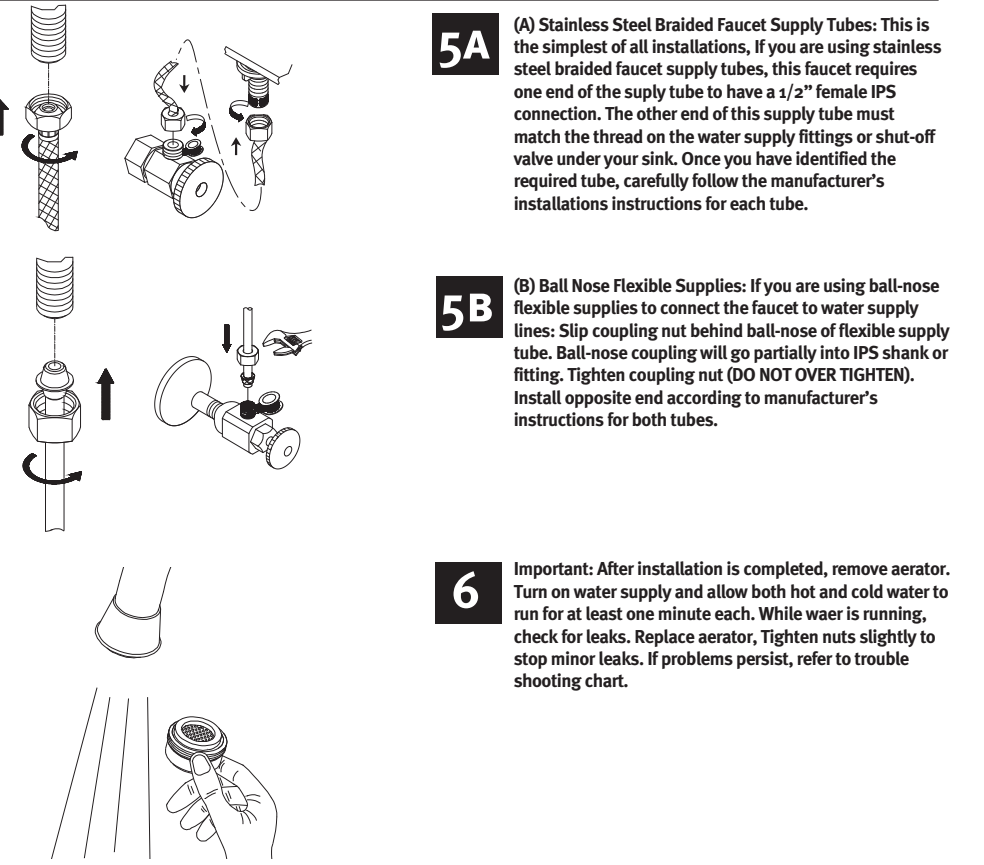
Prior to beginning installation, turn off the cold and hot water lines and open the old faucet to release built-up pressure. When installing your new faucet, turn the connector nuts fingertight, then use one wrench to anchor the fitting and a second wrench to tighten the nut one additional turn. Connections that are too tight will reduce the integrity of the system. Wrap all threaded connections with pipe tape available at your local hardware or plumbing supply store. Always wrap in a clockwise direction. The fittings should be installed by a State-licensed plumber.

INSTALLATION



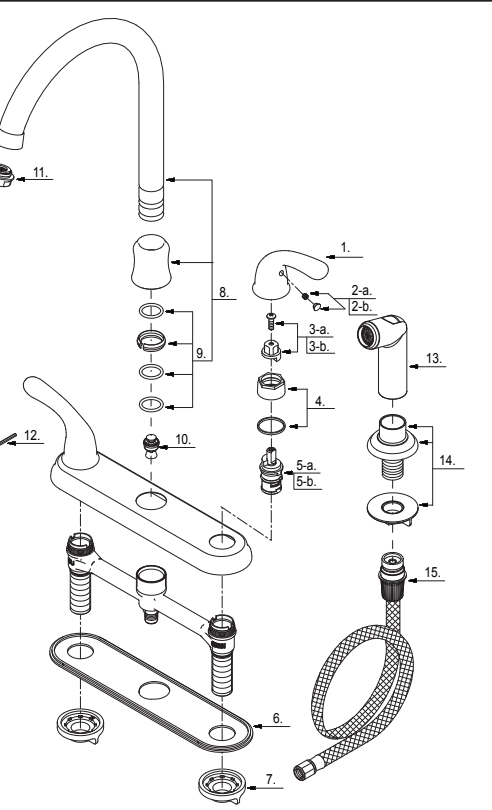
STEPS 1-4

INSTALLATION



STEPS 5A-6

INSTALLATION



- | | |
|--|-----------|
| 1 Metal Handle | A069059 |
| 2-a Index Button-Cold | A603595C |
| 2-b Index Button-Hot | A603595H |
| 3-a Handle Adapter-Cold | A66D574C |
| 3-b Handle Adapter-Hot | A66D574H |
| 4 Retainer Nut & Washer | A66D642 |
| 5-a Ceramic Disc Cartridge - Cold | A507104N |
| 5-b Ceramic Disc Cartridge - Hot | A507103N |
| 6 Putty Plate | A011003 |
| 7 Lock Nut Set | A504023 |
| 8 Spout Assembly | A666094N |
| 9 Spout Seal Kit | A663040N |
| 10 Spray Diverter w/Vacuum Breaker | A501144N |
| 11 Aerator | A500143N |
| 12 Hex Wrench (H2.5 * 19 mm L * 53 mm L) | A031000NI |
| 13 Side Spray | A503002N |
| 14 Spray Holder Assembly (2-1/2" L) | A504042 |
| 15 Spray Hose | A511000N |

209-442 (V4)

PARTS DIAGRAM

TROUBLE-SHOOTING

- PROBLEM:** Leaks underneath handle.
CAUSE: Retainer nut has come loose or O-ring on cartridge is dirty or twisted.
ACTION:
1. Move the handle to off position. Unscrew the handle screw. Remove the handle (Diagram A).
 2. Tighten the retainer nut by turning it clockwise (Diagram B). Move the cartridge stem to the on position. The leak should stop around the cartridge stem.
 3. If the leak does not stop, shut off the water supply. Remove the retainer nut by turning it counter-clockwise with a wrench. Lift out the cartridge valve (Diagram C). Inspect the larger O-rings, if either O-ring is twisted, straighten it out. If either O-ring is damaged, replace it.
 4. Re-position the cartridge back to the faucet body. Make sure that the wings on the two sides of the cartridge bonnet fit well into the cuts on the two sides of the faucet body (Diagram D). Tightly screw the retainer nut onto the faucet body.
 5. Re-install the handle.
 6. Turn on water supply and double check if there is still a leakage between the spout and the body.
 7. If yes, remove the spout and clean the dirty o-ring or replace damaged oring. (Diagram E)
 8. Re-install the faucet and check.
- PROBLEM:** Faucet leaks around aerator.
CAUSE: Aerator incorrectly fitted
ACTION:
1. Unscrew the aerator by turning it clockwise (Diagram F). Inspect the black rubber packing inside the aerator. The rubber packing should be flat.
 2. Screw the aerator onto the spout end and tighten.
- PROBLEM:** improper water pattern.
CAUSE: Aerator dirty or small parts inside aerator improperly installed.
ACTION:
1. Remove the aerator from the spout end by turning it clockwise.
 2. Gently flush the small parts inside the aerator to clear away any debris.
 3. Re-install the small parts as shown in the exploded diagram (Diagram G). Metal screens must be flat and plastic supporter must be straight.
 4. Screw the aerator onto the spout end and tighten.

