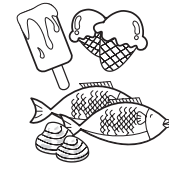


Food Storage Guide

(Refer to the Product Overview for identification of parts.)

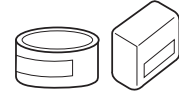
Freezer Compartment Shelf

Store various frozen foods such as meat, fish, ice cream, frozen snacks, etc.



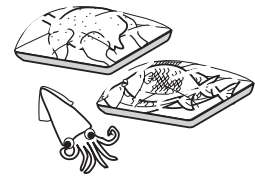
Freezer Compartment Door Bin

- Store small packed frozen food.
- The temperature in the door bins is likely to increase as the door opens; therefore, do not store long-term foods such as ice cream in the door bins.



Freezer Compartment Drawer

- Store meat, fish, chicken, etc. after wrapping them with thin foil.
- Store dry.



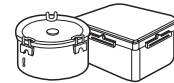
Dairy Corner

Store dairy products such as cheese and butter.



Refrigerator Compartment Shelf

Store side dishes or other foods at a proper distance.



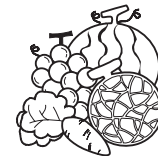
Refrigerator Compartment Door Bin

Store small packed food or beverages such as milk, juice, etc.



Vegetable Drawer

Store vegetables or fruits.



Food storage guide

- Store fresh food in the refrigerator compartment. How food is frozen and thawed is an important factor in maintaining its freshness and flavor.
- Do not store food that spoils quickly, such as bananas and melons, at low temperatures.
- Allow hot food to cool prior to storing it in the refrigerator. Placing hot food in the refrigerator could spoil other food and lead to a higher energy consumption.
- Tightly wrap food or store it in a container with a lid.
- Do not block air vents with food. Smooth circulation of chilled air keeps refrigerator temperatures even.
- Do not open the door frequently. Opening the door lets warm air enter the refrigerator and causes temperatures to rise.
- Do not overfill the door bins.

Freezer compartment

- Do not store bottles or glass in the freezer compartment. They may break or shatter.
- Do not refreeze food that has been thawed. This causes loss of taste and nutrients.
- When storing frozen food for an extended period of time, such as ice cream, keep it on a shelf, not in a door bin.
- Do not touch frozen containers made of metal with wet hands.

Refrigerator compartment

- Always clean food prior to refrigerating. Vegetables and fruits should be washed and dried. Packed food should be wiped to prevent adjacent food from spoiling.
- When storing eggs in their storage rack or box, ensure that they are fresh, and always store them in an upright position.

NOTE

- If you keep the refrigerator in a hot and humid place, frequent opening of the door or storing a lot of vegetables in it may cause condensation to form which has no effect on its performance. Remove the condensation with a paper or kitchen towel.

Before Using Tag On

The Tag On function allows you to conveniently use Smart Diagnosis™, and communicate with your appliance using a smart phone. To use the Tag On function:

1. Download the LG Appliance Smart Diagnosis application to a smart phone.
2. Turn on the NFC (Near Field Communication) function in the smart phone.
The Tag On function is only compatible with smart phones that are equipped with the NFC function and based on the Android 4.0 (Ice Cream Sandwich) or later OS (operating system).

Turning On the Smart Phone's NFC Function

1. Enter the Settings menu of the smart phone and select Share & connect under WIRELESS NETWORKS.
2. Set NFC and Direct/Android Beam to ON and select NFC.
3. Check Use Read and Write/P2P receive.

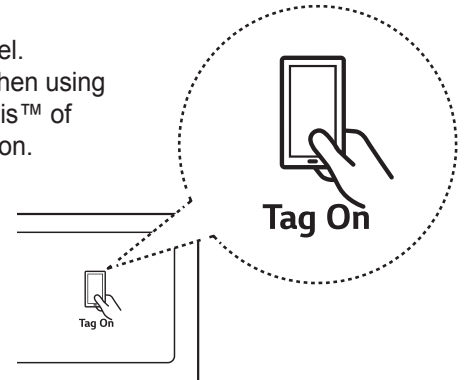
NOTE

- Depending on the smart phone manufacturer and Android OS version, the NFC activation process may differ. Refer to the manual of the smart phone for details.
- The Tag On function can be activated using the NFC function on most smart phones running Android 4.0 or higher. The NFC function may not be compatible with all smart phones.

Using the Tag On Function

The Tag On Icon

Look for the Tag On icon on the control panel. Position the smart phone next to the icon when using the Tag On function with the Smart Diagnosis™ of the LG Appliance Smart Diagnosis application.



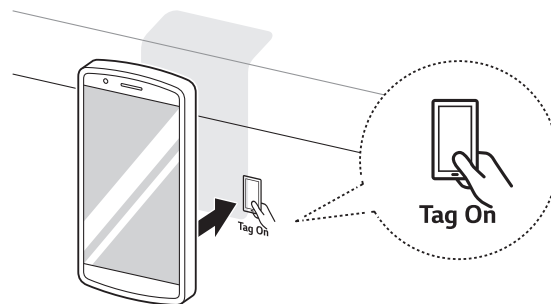
The NFC Antenna Position

When using the Tag On function, position the smart phone so that the NFC antenna inside the back of the smart phone matches the position of the Tag On icon on the appliance. (The position of the antenna cannot be seen, so the LG Appliance Smart Diagnosis application will attempt to find it and display a target range for the antenna on the smart phone's screen.)

If the application is not able to show a target range, position the center back of the smart phone over the Tag On icon on the appliance. If the connection is not made immediately, move the smart phone very slightly in a widening circular motion until the application verifies the connection.

Because of the characteristics of NFC, if the transmission distance is too far, or if there is a metal sticker or a thick case on the phone, transmission will not be good.

Press [?] in the LG Appliance Smart Diagnosis application for a more detailed guide on how to use the Tag On function.



Using Tag On with Applications

Hold an NFC-equipped smart phone against the Tag On logo on an LG appliance to use the LG Appliance Smart Diagnosis application's Smart Diagnosis™.

Smart Diagnosis™

Allows you to diagnose and troubleshoot problems with your refrigerator.

General information

Vacation Time

If you choose to leave the refrigerator on while you are away, follow these steps to prepare the refrigerator before you leave.

1. Use up any perishables and freeze other items.
2. Turn off the icemaker and empty the ice bin.

If you choose to turn the refrigerator off before you leave, follow these steps.

1. Remove all food from the refrigerator.
2. Depending on your model, set the thermostat control (refrigerator control) to OFF.
3. Clean the refrigerator, wipe it and dry well.
4. Tape rubber or wood blocks to the tops of both doors to prop them open far enough for air to get in. This stops odor and mold from building up.

Power Failure

1. If the power will be out for 24 hours or less, keep all refrigerator doors closed to help foods stay cold and frozen.
2. If the power will be out for more than 24 hours, remove all frozen food and store it in a frozen food locker.

If You Move

When moving the refrigerator to a new home, follow these steps to prepare it for the move.

1. Remove all food from the refrigerator and pack all frozen food in dry ice.
2. Unplug the refrigerator.
3. Clean, wipe and dry thoroughly.
4. Take out all removable parts, wrap them well and tape them together so they do not shift and rattle during the move.
5. Depending on the model, raise the front of the refrigerator so it rolls more easily OR screw in the leveling legs all the way so they do not scrape the floor.
6. Tape the doors shut and tape the power cord to the refrigerator cabinet. When you get to your new home, put everything back and refer to the Installation section for preparation instructions.

Anti-Condensation Pipe

The outside wall of the refrigerator cabinet may sometimes get warm, especially just after installation. This is due to the anti-condensation pipe, which pumps hot refrigerant to prevent sweating on the outer cabinet wall.

Replacing LED Lighting

Check to make sure that the LED lamp is turned on.

- LED lamp is not a user-serviceable item.
- If the LED array fails, contact LG for service.

Cleaning

It is important that the refrigerator be kept clean to prevent undesirable odors. Spilled food should be wiped up immediately, since it may acidify and stain plastic surfaces if allowed to settle.

Exterior

Use a lukewarm solution of mild soap or detergent to clean the durable finish of your refrigerator.
Wipe with a clean damp cloth and then dry.

Interior

Regular cleaning is recommended. Wash all compartments in a baking soda solution or a mild detergent and warm water. Rinse and dry.

NOTE

- Do not use a dishwasher to clean the lower drawers; the high temperature may cause damage to the bins, making them unusable.

After Cleaning

Please verify that the power cord is not damaged or overheated. Also verify the power plug is inserted completely into power outlet.

WARNING

Always unplug the refrigerator prior to cleaning.

Wipe up excess moisture with a sponge or cloth to prevent water or liquid from getting into any electrical part and causing an electric shock.

Never use metallic scouring pads, brushes, coarse abrasive cleaners, strong alkaline solutions, or flammable or toxic cleaning liquids on any surface.

Do not touch frozen surfaces with wet or damp hands, because skin could stick or adhere to extremely cold surfaces.