

INSTALL INSTRUCTIONS

NEWAGE
PRODUCTS INC.

VERSAROLL

Thank you for purchasing NewAge Products VersaRoll. We hope your new VersaRoll gives you a long-lasting trouble-free flooring solution, and have put together this instruction and care guide to help you get the most out of your floor. Please read this package fully before laying out your VersaRoll.

NewAge does NOT recommend gluing or taping your floor down to the substrate.

NewAge does not recommend installing your floor outside, however in such installs we recommend using a pressure sensitive adhesive to attach the roll floor to the substrate.

Patterns of two pieces of roll floor may not align perfectly along the seam when two mats are laid side by side.

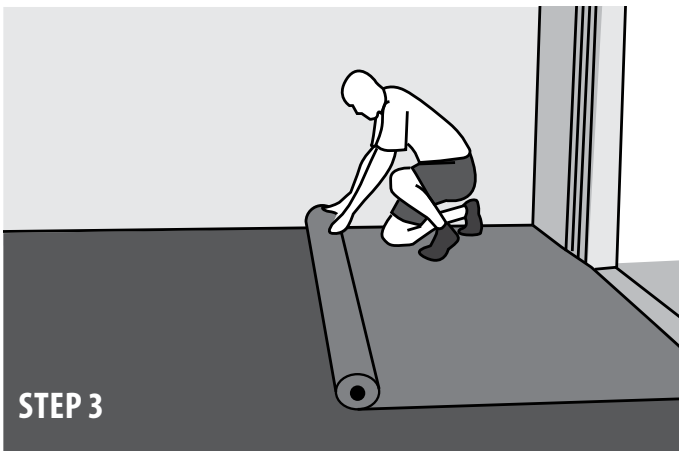
The roll floor is heavy, and as such, we recommend 2 people to install this floor.

STEP 1

Unpack and install product as soon as possible after you've received it. The roll is wound tightly during transportation and it will unroll and flatten easier if it is unrolled out of its packaging immediately after purchase.

STEP 2

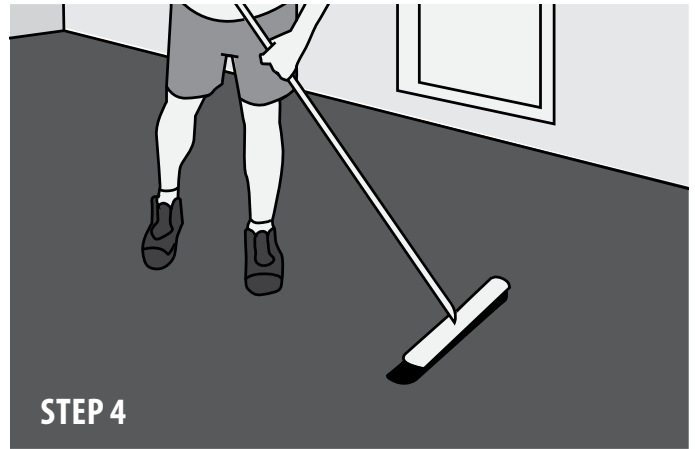
Make sure the surface you're rolling the floor on is clean and dry. Wipe up any chemical or oil spills before laying the floor down. If there are any loose chunks of concrete or debris, remove those as best as possible to avoid bumps in the floor. Finally, sweep, vacuum or hose the garage floor down and allow it to dry fully before installing your floor.



STEP 3

STEP 3

Now you can roll out your floor. For quickest installation, unroll the roll floor on to the garage floor or driveway. Unrolling the floor on the driveway with direct sunlight will flatten out the roll faster. Start unrolling the roll floor at the garage entrance, and finish at the back of the garage. Depending on how the floor is packaged, you may need to flip the roll to get the pattern side up. The roll is heavy, so you may want to have a helper to assist you in doing this.



STEP 4

STEP 4

Initially, the roll floor will have small bubbles, ripples or curl marks in the floor. In colder climates, it may take 2-4 days for most curls or ripples in the floor to flatten out. To make the roll floor lay flat, use a large push broom to flatten out air trapped under the roll. Start pushing at the center of the roll and work your way out to the ends for best results. These curls and bumps are normal, as the floor was wound tightly during shipping, and will need a few days to relax and conform to your floor. If you need to park on the floor immediately, you can do so after unrolling the floor, and do not have to wait until all of the curls or ripples have flattened out.

STEP 5

Custom Fitting – If you'd like to trim the floor around edges or corners, first allow the floor to fully relax in place for 2-4 days (up to 4 days is suggested for colder climates). You can use a standard industrial cutting knife or industrial scissors to cut the roll. If the roll is being installed in extreme conditions, such as direct sunlight or a very cold garage, the roll can expand or contract up to 3% (3-4 inches overall). If you are custom cutting the roll, it is important to give the roll enough time to adjust to the temperature in the garage before trimming. If installing in a warmer season, leave about 1/8" gap around the perimeter of the garage to allow for expansion and contraction of the product. If installing in a colder season, leave about 3/8" gap around the perimeter to allow for expansion in the summer months.

STEP 6

Taping around edges is not necessary. Because the roll can expand or contract, it is best if the product is allowed to sit freely on the floor. If you choose to tape the seam between two roll floors, we recommend using indoor-outdoor carpet tape. If you find the roll is moving or shifting on your floor, we recommend taping the floor down at the front of the garage (inside the garage door), using indoor-outdoor carpet tape.

INSTALL INSTRUCTIONS

NEWAGE
PRODUCTS INC.

VERSAROLL

INSTALLING MULTIPLE ROLLS

When installing multiple rolls, you have two options for installation:

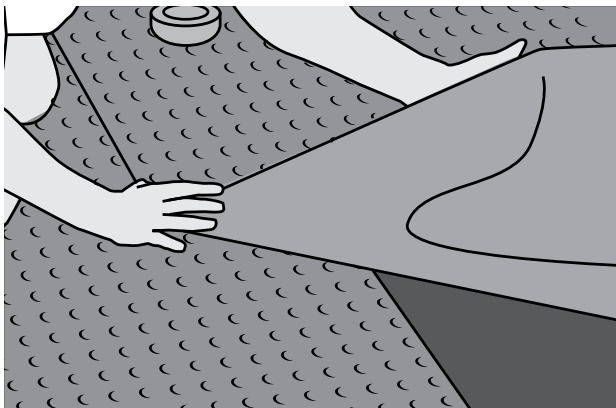
A

Overlap Method – Place the second roll about 1.5" to 4" over the first roll floor. This allows both for seamless appearance and floor protection. You may want to glue or tape the floor down using a pressure sensitive adhesive or PVC adhesive such as Oatey X15, however we do not recommend gluing your floor to the substrate.

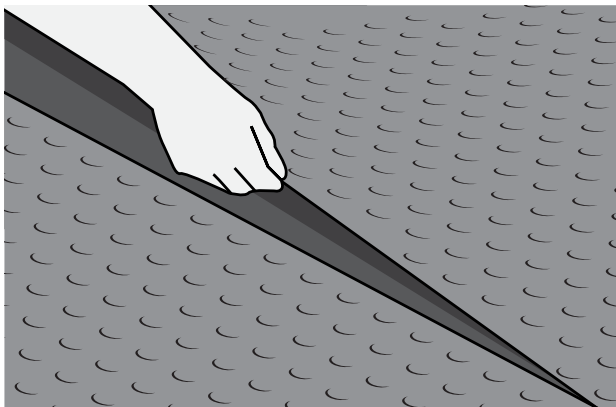
B

Seamless Method – trim the edges so that the floor pattern is consistent between two adjacent rolls. Butt the edges of each roll up against each other to create a seamless look. You may want to glue or tape the floor down using a pressure sensitive adhesive or PVC adhesive such as Oatey X15, however we do not recommend gluing your floor to the substrate.

WHEN INSTALLING MULTIPLE ROLLS WALL-TO-WALL, YOU CAN USE EITHER:



A. Overlap seams: Overlap rolls 1.5" to 6"



B. Seamless Method: Trim edges to continue floor pattern by forming a tight butt joint between rolls. Follow guidelines for seamless method.

CARE AND MAINTENANCE

To keep your roll floor in top condition for years to come, follow these simple cleaning guidelines.

- Sweep the floor clear of debris
- Wash the floor as you would an interior vinyl floor. A mild floor detergent and water works well.
- You may remove the roll floor from the garage and place it in the driveway to clean and then hose it down
- The Roll Floor is NOT stain-proof. If chemical spills, rubber tire marks, rust marks or other fluids are left on the floor for a prolonged period of time, they may cause permanent stains. Do NOT use harsh chemicals to clean the floor, this may cause discoloration.
- Motorcycle stands put a lot of pressure on one point on the roll floor and may cause cuts or markings in the floor
- Do NOT use car-care vinyl "shine" products, as these will leave the floor looking great, however they will leave the floor slippery and potentially unsafe to walk on

Note: Due to the manufacturing process, patterns of two pieces of flooring may not match or align exactly along the seam when two mats are laid side by side. This is normal.

Floor may expand or contract up to 2% of overall length due to temperature changes.

For specific questions regarding: product installation, care, or cleaning, please contact Customer Service at NewAge Products

NEWAGE
PRODUCTS INC.

THE ORGANIZED GARAGE

201 Chrislea Road, Vaughan, ON, Canada

1-877-306-8930

www.NEWAGEPRODUCTS.com

NEWAGE PRODUCTS INC. VERSAROLL WARRANTY

1 YEAR LIMITED MANUFACTURER WARRANTY



For one year from the date of purchase, when this product is installed, operated and maintained according to the instructions attached to or furnished with the product, NewAge Products Inc. will replace the defective product or parts if the part fails as a result of defective materials or workmanship.

NEWAGE PRODUCTS INC. WILL NOT PAY FOR:

1. Service calls to correct the installation of any NewAge products or to instruct you how to use or install them.
 2. Damage resulting from improper handling or shipping of products, or products damaged by accident, misuse, abuse, fire, flood, improper installation, acts of God, neglect, corrosion, modification or mishandling.
 3. Any staining, scratches, marks or cuts to the floor caused by items the user has applied to the floor, and does not follow the installation or use and care guide provided with the product.
 4. Repairs or replacement when your product is used in other than normal, single-family household use, such as a commercial environment, or handled in any way inconsistent with the installation instructions included with the product.
 5. Cosmetic damage, including scratches, dings, dents or tears that do not affect the structural or functional capability of the product.
 6. Surfaces damaged due to chemical interaction resulting in corrosion of the floor.
 7. Replacement parts for NewAge products outside Canada and the United States.
 8. Loss of product contents due to theft, fire, flood, accident or acts of God.
 9. Shipping or freight fees to deliver replacement products or to return defective products.
 10. Any labor costs during the limited warranty period.
-
-

DISCLAIMER OF IMPLIED WARRANTIES; LIMITATION OF REMEDIES

IMPLIED WARRANTIES, INCLUDING TO THE EXTENT APPLICABLE WARRANTIES OF MERCHANTABILITY OR FITNESS FOR A PARTICULAR PURPOSE, ARE EXCLUDED TO THE EXTENT LEGALLY PERMISSIBLE. ANY IMPLIED WARRANTIES THAT MAY BE IMPOSED BY LAW ARE LIMITED TO ONE YEAR, OR THE SHORTEST PERIOD ALLOWED BY LAW. SOME STATES AND PROVINCES DO NOT ALLOW LIMITATIONS OR EXCLUSIONS ON HOW LONG AN IMPLIED WARRANTY OF MERCHANTABILITY OR FITNESS LASTS, SO THE ABOVE LIMITATIONS OR EXCLUSIONS MAY NOT APPLY TO YOU. THIS WARRANTY GIVES YOU SPECIFIC LEGAL RIGHTS, AND YOU MAY ALSO HAVE OTHER RIGHTS WHICH VARY FROM STATE TO STATE OR PROVINCE TO PROVINCE