

② Set

Setting your stone or tile

Different tile types need to be bonded to your surface with just the right kind of mortar. We can help you choose the materials for a project that will be beautiful for years to come.

For Porcelain & Ceramic Tile

FlexBond® Crack Prevention Mortar



Size	Notch Trowel Size	Coverage Per Bag
< 8"	1/4" x 1/4" x 1/4"	90 sq. ft.
8"–12"	1/4" x 3/8" x 1/4"	60 sq. ft.
12"+	1/2" x 1/2" x 1/2"	45 sq. ft.

All CUSTOM® thin-set mortars provide approximately the same coverage per 50 lb. bag.

Setting the Stone or Tile



Clean surface of contaminants.



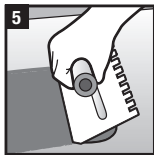
Add cool water.



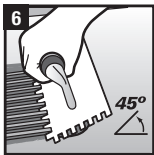
Add mortar.



Mix 5 minutes.



Spread mortar on surface.



Apply mortar 10 sq. ft. at a time.

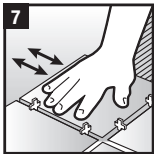
For Stone

Marble, Granite & Travertine Premium Medium Bed Mortar



Size	Notch Trowel Size	Coverage Per Bag
< 8"	1/4" x 1/4" x 1/4"	90 sq. ft.
8"–12"	1/4" x 3/8" x 1/4"	60 sq. ft.
12"+	1/2" x 1/2" x 1/2"	45 sq. ft.

All CUSTOM® thin-set mortars provide approximately the same coverage per 50 lb. bag.



Set tile into place.



Wipe with damp sponge.



Wait 24 hours before using surface.

Side Note

Use white thin-set mortars with white or translucent tile or light colored grout. Otherwise, use gray thin-set mortars.

Basic Tools for Setting

- ☐ Notch Trowel
- ☐ Margin Trowel
- ☐ Tile Nippers
- ☐ Tile Spacers
- ☐ Grout Sponge