

Install Tile & Stone With A Lifetime Warranty



Lifetime Warranty — It's as easy as ① ② ③!

① **PREP**

| **Preparing Your Surface**

② **SET**

| **Setting the Tile**

③ **GROUT**

| **Grouting the Tile Joints**



**PROJECT
CHECKLIST
INSIDE**

1 PREP

ELIGIBLE FOR
LIFETIME WARRANTY
GARANTIA

1ST STEP
to a
Lifetime Warranty

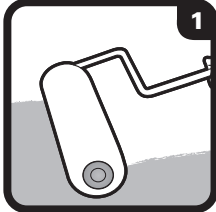
PREPARING THE SURFACE

Preparing the existing surface is the most critical task of any tile or stone installation. The tile must be placed on a rigid, level, structurally-sound surface to avoid problems. The surface should always be clean, dry and free of contaminants that could prevent a good bond.



For Concrete

RedGuard®
Waterproofing and
Crack Prevention
Membrane



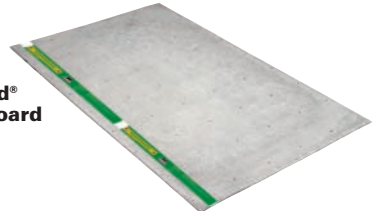
Roll on RedGuard.

COVERAGE

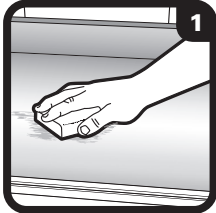
	SIZE	COVERAGE
For Crack Prevention	1 gallon	110 sq. ft.
For Waterproofing	1 gallon	30 - 40 sq. ft.

For Floors & Countertops

1/4" WonderBoard®
Cement Backerboard



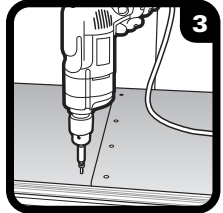
EasyMat™
with **SoundGuard®**
Technology
where available



For countertops only – clean then lightly sand.



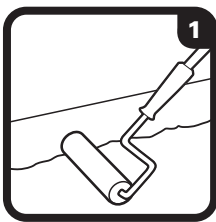
Apply **FlexBond** to floor or countertop.



Fasten **WonderBoard**.

COVERAGE

	SIZE	COVERAGE
1/4" WonderBoard	36" x 60" x 1/4"	15 sq. ft.
EasyMat	48" x 10' x 5 mm	40 sq. ft.



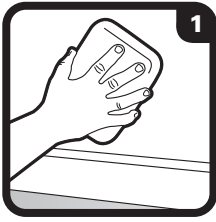
Apply primer.



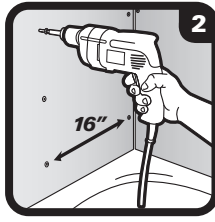
Roll out **EasyMat**.

For Walls & Showers

1/2" WonderBoard®
Cement Backerboard



For bathtub walls, staple roofing felt. For walls in dry areas, clean wall.



Fasten **WonderBoard** to studs.



Fill gaps with **FlexBond**, embed mesh tape, smooth with trowel.

COVERAGE

	SIZE	COVERAGE
1/2" WonderBoard	36" x 60" x 1/2"	15 sq. ft.

BASIC TOOLS FOR SURFACE PREP

Notch Trowel



Knee Pads



Scoring Knife



Backerboard Screws



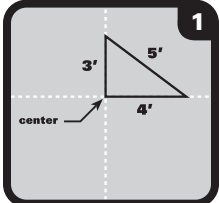
MEASURING AND LAYING OUT TILE

CUTTING THE TILE

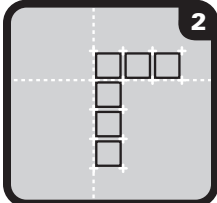
For professional results use SuperiorBilt® Tools.



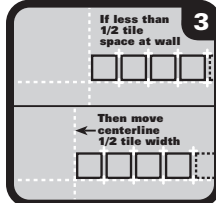
For Floors



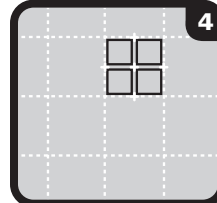
1 Mark centerlines of the floor. Use a 3-4-5 triangle to check for square.



2 Do a dry run to determine tile placement and cuts. Place a row of tiles along each line using spacers.

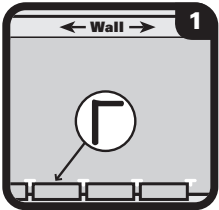


3 If the space at the wall is less than 1/2 tile, shift centerline to eliminate small cuts. This will allow wider tiles at both walls.

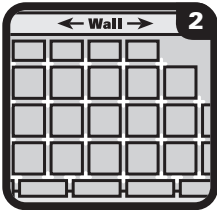


4 Work in chalked grids (typically 2 tiles by 2 tiles) allowing space for grout joints.

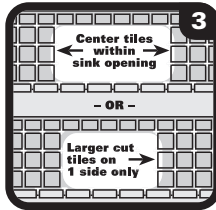
For Countertops



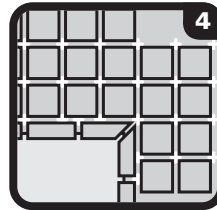
1 Begin layout by positioning the front edge tiles (bullnose or v-cap) along the front of the countertop.



2 Do a dry run by placing as many full tiles on the countertop with spacers as necessary. If countertop abuts a wall, lay cut tiles against the wall.

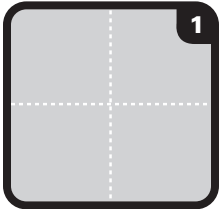


3 For straight countertops, mark centerline of countertop or sink, then lay tiles so cut pieces beside sink are the same width. Avoid less than half-width cut tiles by shifting the layout 1/2 tile left or right.

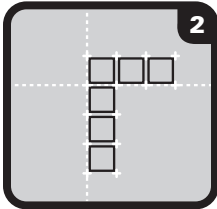


4 For L-shaped countertops, lay full tiles at inside corner. Set bullnose or v-cap pieces in place to ensure correct amount of overhanging pieces.

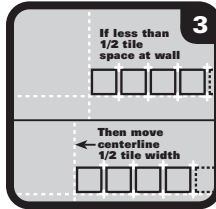
For Walls & Showers



1 Mark centerlines of the wall with a china marker.

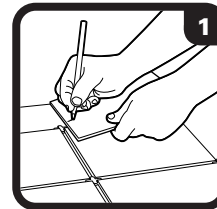


2 To determine tile placement and cuts, lay it out on the floor first, placing a row of tiles along each line using spacers. Then replicate the measurements on the wall.

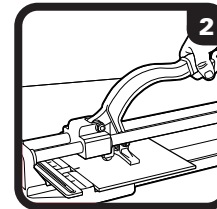


3 If the space at the wall end is less than 1/2 tile, shift centerline to eliminate small cuts. This will allow wide, even tiles at both edges.

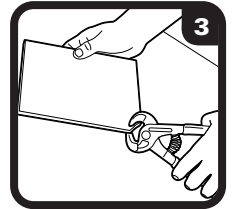
For Cutting Tile



1 After setting your full tiles, go back to set tiles requiring cuts. Mark cuts with a grease pencil or china marker.



2 Make straight cuts using tile cutter or wet saw. Notched or curved cuts and v-cap or quarter round tile cuts require a wet saw.



3 For unique shaping, use tile nippers to cut away small pieces of tile.

BASIC TOOLS FOR CUTTING TILE

Wet Saws

For precise cuts on stone and large tile.



Tile Cutters

For straight scoring and cutting of tile.



Tile Nippers

For breaking away small pieces and edges of tile.



2 SET

ELIGIBLE FOR
LIFETIME WARRANTY GARANTIA

2ND STEP
to a
Lifetime
Warranty

SETTING THE TILE OR STONE

Creating a strong bond is an essential part of tile installation.



For Porcelain & Ceramic Tile



FlexBond® Fortified Thin-Set Mortar



Clean surface of contaminants.



Add cool water.



Add mortar.

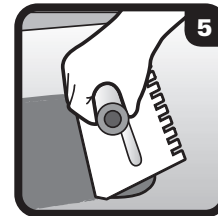
For Stone — Marble, Granite, Slate & Travertine



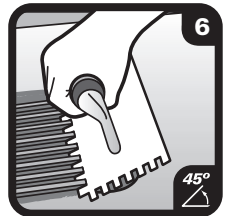
Marble & Granite Fortified Premium Mortar



Mix 5 minutes.



Spread mortar on surface.



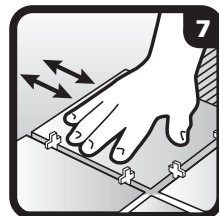
Apply mortar 10 sq. ft. at a time.

COVERAGE

TILE / STONE SIZE	SQUARE-NOTCH TROWEL SIZE	COVERAGE
Up to 8"	1/4" x 1/4" x 1/4"	90
8" – 12"	1/4" x 3/8" x 1/4"	60
12" and larger	1/2" x 1/2" x 1/2"	45
		PER 50 LB. BAG (IN SQ. FT.)

All Custom® thin-set mortars provide approximately the same coverage per 50 lb. bag.

Use white thin-set mortars with white, translucent tile or light colored grout. Otherwise use gray thin-set mortars.



Set tile into place.



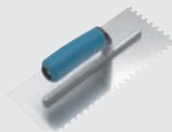
Wipe with damp sponge.



Wait 24 hours before using surface.

BASIC TOOLS FOR SETTING

Notch Trowel



Margin Trowel



Tile Nippers



Tile Spacers



Grout Sponge



3 GROUT



3RD STEP
to a
Lifetime
Warranty

GROUTING THE TILE JOINTS

#1 AMERICA'S GROUT

Polyblend® Grouts produce hard, durable grout joints and are easy to use, just add water and mix.

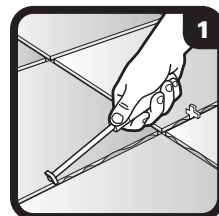


For Grout Joints

MIN
1/8" - 1/2"
+



Polyblend® Sanded Grout



Clean grout joints.



Add cool water.



Add grout.

For Grout Joints

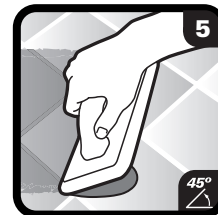
MAX
1/8"
+



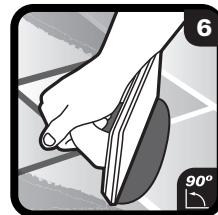
Polyblend® Non-Sanded Grout



Mix 5 minutes.



Apply grout with float.



Remove excess grout from surface.

COVERAGE

How much grout do I need

PROJECT SIZE	TILE SIZE	POLYBLEND	
		SANDED NUMBER OF 25 LB. BAGS	NON-SANDED NUMBER OF 10 LB. BOXES
50 Sq. Ft.	Up to 24"	1	1
	Up to 6"	1	2
100 Sq. Ft.	6" - 24"	1	1
	Up to 8"	2	2
	10" - 16"	2	2
200 Sq. Ft.	18" - 24"	1	1

Coverage applicable for grout joint widths 1/8" to 1/4" for Sanded Grout; 1/16" to 1/8" for Non-Sanded Grout. Amounts rounded to ensure proper coverage.

Choose from 48 colors to complement your installation.



Wait for firm joints
Lightly clean off excess
grout with sponge.
CAUTION:
Do Not Over Water.



Remove haze with
cheesecloth.



Wait 16 hours before
using surface.

BASIC TOOLS FOR GROUTING

Grout Float



Margin Trowel



Grout Sponge



Cheesecloth





3 STEPS
to a
Lifetime
Warranty

LIFETIME WARRANTY CHECKLIST

Here's your easy checklist to be sure you have all the right materials for your project. Just save the receipts of the materials purchased!
Register Your Warranty at
www.custombuildingproducts.com

MY PROJECT SPECS

TILE / STONE SIZE	GROUT JOINT SIZE	JOB SIZE (IN SQ. FT.)

1 PREP

For coverage see page 2 -3

- For Concrete**
RedGard® Waterproofing and Crack Prevention Membrane
_____ Number of Pails
- For Floors & Countertops**
WonderBoard® Cement Backerboard
_____ Number of Boards
- EasyMat™ with SoundGard® Technology** *where available*
_____ Number of Rolls
- For Walls & Showers**
WonderBoard® Cement Backerboard
_____ Number of Boards



2 SET

For coverage see page 5

- For Porcelain & Ceramic Tile**
FlexBond® Fortified Thin-Set Mortar
_____ Number of Bags
- For Stone — Marble, Granite, Slate & Travertine**
Marble & Granite Fortified Premium Mortar
_____ Number of Bags



3 GROUT

For coverage see page 7

- For Grout Joints 1/8" to 1/2" Wide**
Polyblend® Sanded
_____ Number of Bags / Boxes
- For Grout Joints up to 1/8" Wide**
Polyblend® Non-Sanded Grout
_____ Number of Boxes



ALSO RECOMMENDED

For Sealing

- SurfaceGard® Penetrating Sealer



BASIC TOOLS FOR SURFACE PREP

- Notch Trowel
- Knee Pads
- Scoring Knife
- Backerboard Screws

BASIC TOOLS FOR SETTING

- Notch Trowel
- Tile Spacers
- Tile Nippers
- Margin Trowel
- Grout Sponge

BASIC TOOLS FOR GROUTING

- Grout Float
- Margin Trowel
- Grout Sponge
- Cheesecloth

4 CARE

CARING FOR YOUR INSTALLATION



Following proper maintenance techniques will keep your stone, grout and tile looking like new. TileLab® sealers and cleaners are specifically and safely formulated for stone, tile or grout.

Sealing



**SurfaceGard®
Penetrating Sealer**



**Aim & Seal™
Grout Sealer**



Protect your grout, tile and stone.



PROTECTED BY
MOLDGARD®
TECHNOLOGY

All Custom products are protected by MoldGard Technology, ensuring the tile installation has the highest level of protection against mold and mildew.



Contributes to "Leadership in Energy and Environmental Design" Certification

**Register Your Warranty at
www.custombuildingproducts.com**

For more details, please call 800-272-8786 or visit www.custombuildingproducts.com



CUSTOM®
BUILDING PRODUCTS

Custom Building Products
Seal Beach, CA 90740
800-272-8786

www.custombuildingproducts.com