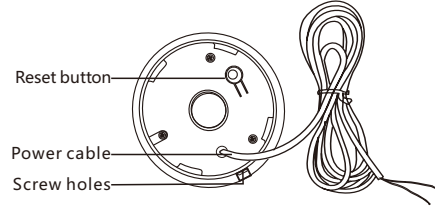
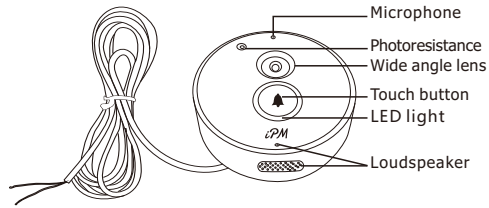
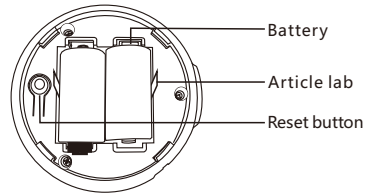
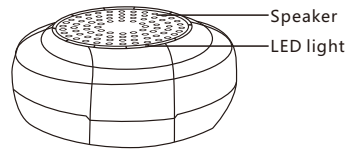


Product features

Doorbell features



Door Chime Features

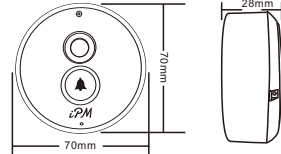


1

Product specification

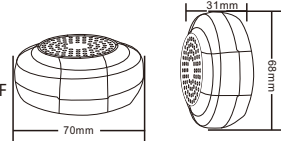
Doorbell specification

WiFi: 802.11b/g/n
 Audio: full duplex two way audio
 Resolution: 720P
 View angle: 120 degree
 TF card: 8GB
 Power: DC5V 2A
 Operate temperature: -10F ~120F
 Dimension: 2.7" (D) X 1.2" (W)



Door Chime specification

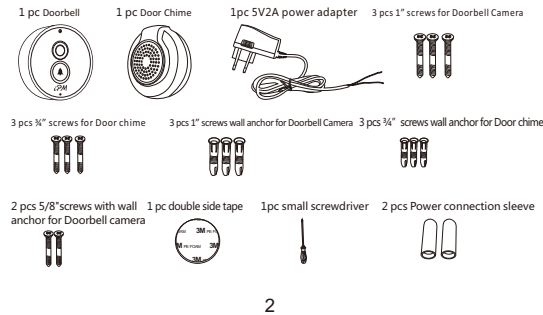
Power: CR123A X 2
 Battery life: 12 months
 Continuous work: 1400 times
 Operate temperature: -10F ~120F
 Sound intensity: 120dB
 Dimension: 2.7" (D) X 1.2" (W)



For the first time use and installation

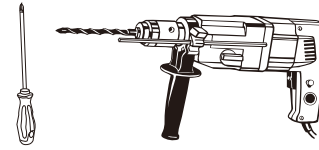
Note: Ensure that there is WiFi network for the doorbell to connect.

Accessories



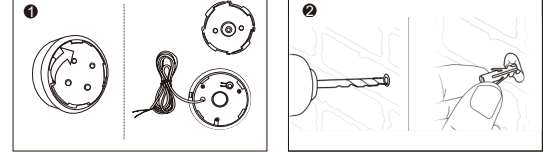
2

You may need: electric drill and a screwdriver

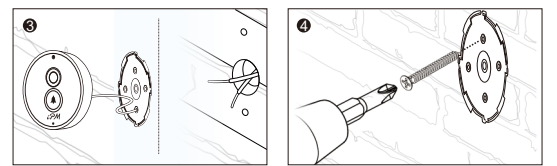


One : Doorbell installation steps

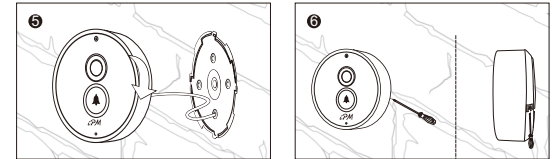
1. Remove the doorbell camera back cover
2. Drill hole to run Doorbell power wire



3. Run Doorbell power wire through the hole
4. Mount the back plate using 3X1" screws (use 1" screw wall anchors if needed)



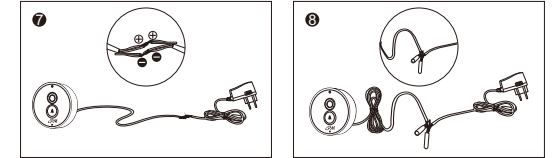
5. Mount Doorbell camera to the camera backplate
6. Fix Doorbell camera to the back plate using metal screw



3

7. Connect Doorbell power line's positive(red) line to Power adapter power line's positive(red) line. Connect Doorbell power line's Negative(black) line to Power adapter power line's negative(black) line

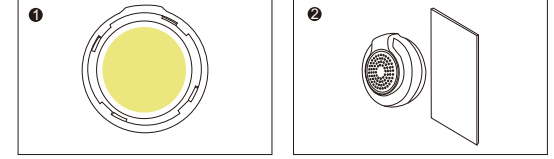
8. Fasten each connected using the power connection sleeve



Two: Doorbell door chime installation steps

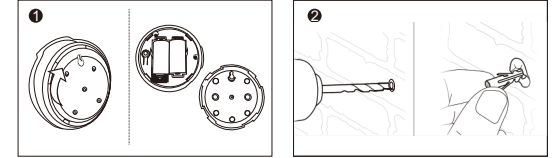
Method 1: Paste method

1. Stick the double sided tape to the back of the chime
2. Stick it to the wall

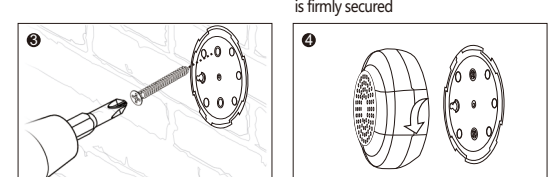


Method 2: Mounting method

1. Remove the back cover of the chime
2. Drill holes to insert 3/4" screw wall anchors(if needed)



3. Mount the back plate using 3X3/4" screws
4. Mount Door chime to the back cover. Make sure to turn clockwise until the chime is firmly secured



4

App download & Add device

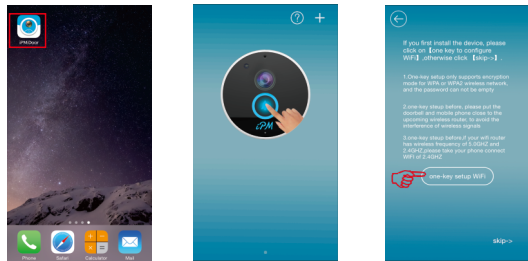
App download

Android phone: download "iPMiDoor" from GooglePlay.
 iOS phone, download "iPMiDoor" from App Store

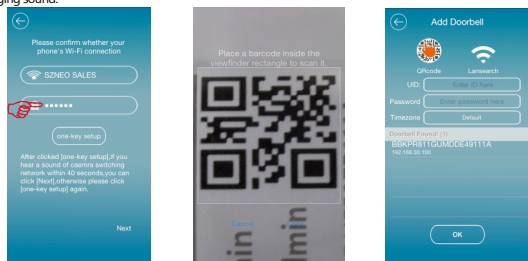
Add device

One. Add Doorbell Camera

1. Run "iPMiDoor" from Google Play (first time) or from your phone desktop
2. Tap on "+" icon on top right corner to add Doorbell
3. For first time installation, tap on "one key setup wifi" icon or choose skip (only if camera wifi setup is done.)



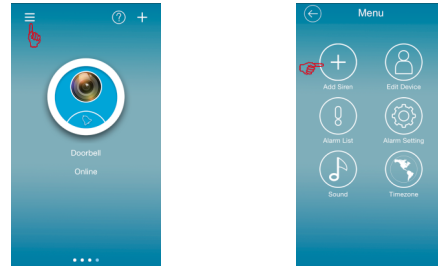
4. While Doorbell gives ringing sound, choose WiFi router from the list which you want to connect the Doorbell camera to. Then input Wi-Fi password and tap on "one key setup wifi". Normally it takes about 40 seconds for Doorbell camera to connect to your Wi-Fi router. When it is done, you will hear a short burst of ringing sound.
5. Add Doorbell to your app by scanning QR code on the back of the Doorbell and input password (default: "admin")
6. Add by Lansearch (select from the Doorbell List) and input password (default: "admin")



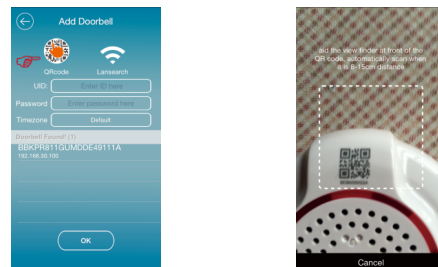
5

Two: Add Doorbell Door Chime

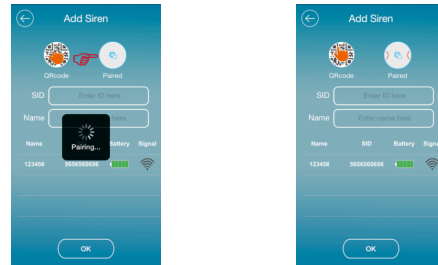
1. Tap on setup menu on top left corner
2. Tap on add siren button "+"



3. Add door chime by scanning QR code located on the front of the device. Then name your device.



4. Add door chime by automatic pairing method. Then, name your device



6

iPM

Doorbell Quick Installation Guide

iPM

