

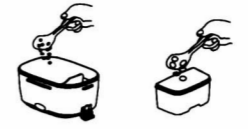
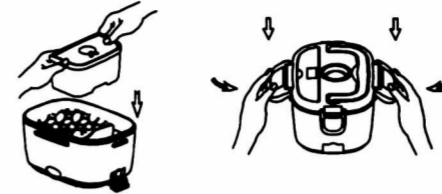
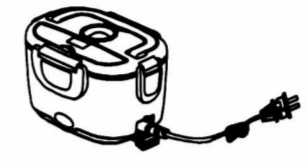

# TAYAMA®

## Electric Lunch Box Manual

### EHB-01



Tayama Appliance USA Inc.  
 Website: [www.tayama-usa.com](http://www.tayama-usa.com)  
 Email: [info@tayama-usa.com](mailto:info@tayama-usa.com)

- Put the cooked foods into the removable containers. 
- Place the containers of food into the lunch box, put the box cover right above the lunch box and lock downward. 
- Open the steam vent cap and connect the power cord. 
- The power indicator light will turn on which means the power is on and heating. 

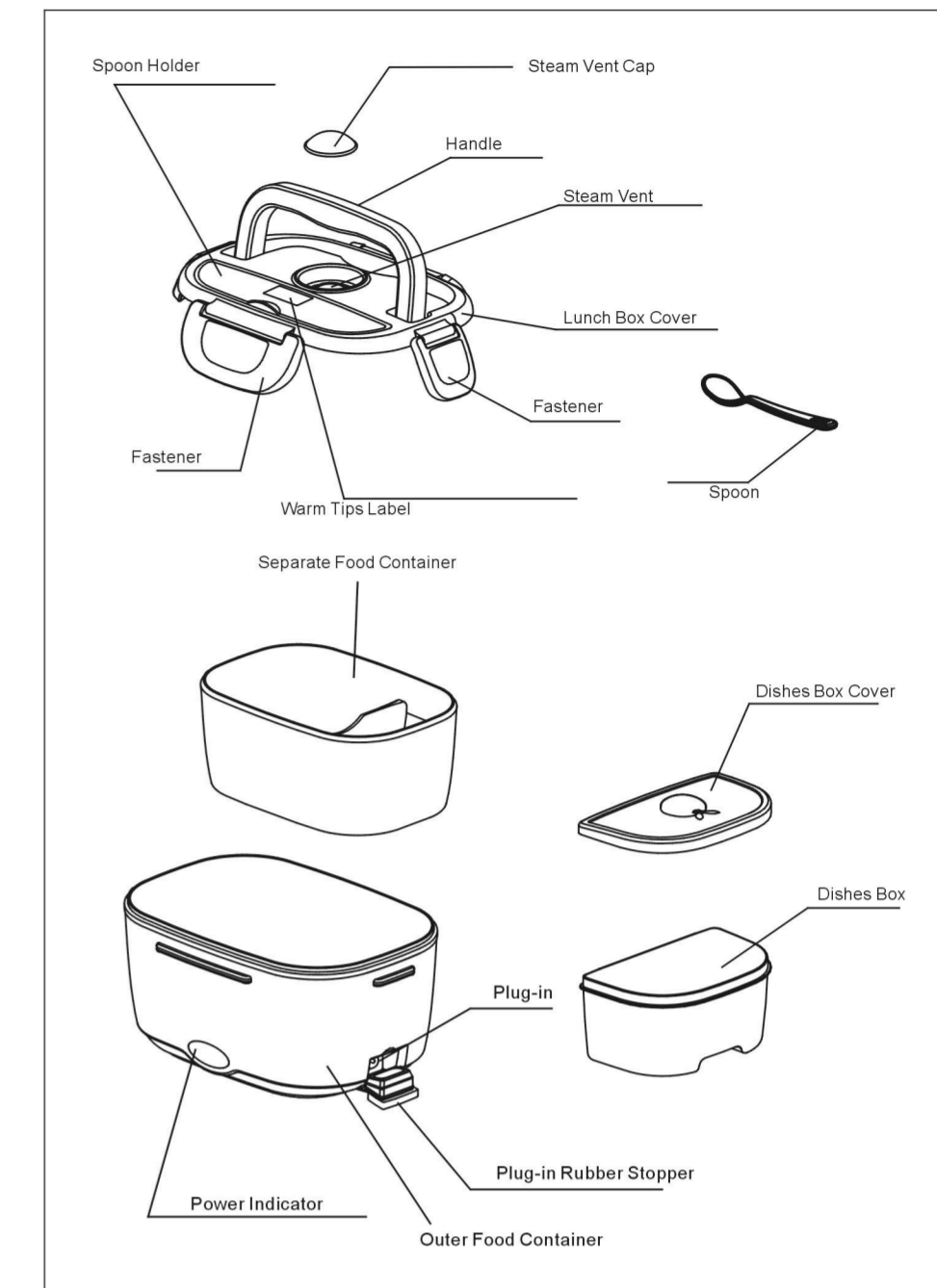
### Warming Tips

If the food has been set aside for a long time, it is suggested to add some water into the rice and then plug into outlet to heat so that the rice would become softer.

### Safety Precautions

- Please make sure the rated voltage is correct for usage.
- If the power cord is damaged, please contact your nearest service center for assistance in obtaining a replacement power cord.
- Do not use the lunch box near flammable objects.
- Never plug in or remove plug with wet hands.
- Never immerse the whole unit in water. May result in electric shock and damage to the heating element.

## Product Structure



## Brief Introduction

Thank you for purchasing our Electric Lunch Box. We independently researched and produced this product which is both novel and fashionable for transporting meals.

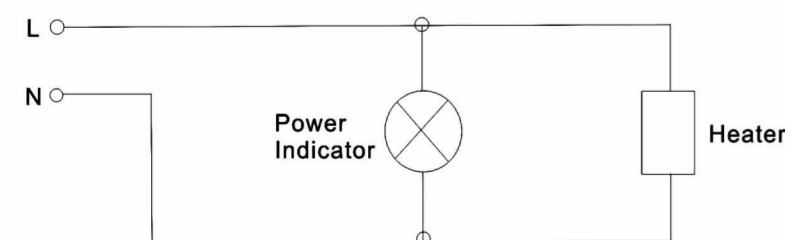
Our product is useful, easy to operate, and convenient for taking food on the go anywhere. Packing your meals is a healthier and less expensive alternative to eating out during your lunch break or in between classes, etc.

### Product Specification

MODEL NO: EHB-01  
 Capacity: 1.05L (rice container: 0.6L dishes container: 0.45L)  
 Voltage: 110V Power: 40W

### Product Features

- Energy efficient, portable and easy to use.
- Special heating element allows food to be warmed evenly.
- Safety conceal PTC thermostatic heating element.
- Removable soup tray with lid cover
- The interior food container is made of imported heat resistant, indurative material which corresponds with the safety standards of ROHS and FDA certifications.



- Do not modify, remove or repair this product by yourself.
- Do not use the lunch box in a wet place.
- Do not disinfect the lunch box in the sterilizing cabinet.
- Do not heat the lunch box in the microwave oven.
- Do not freeze the lunch box in the refrigerator.
- Do not switch on when there is no food inside.

### Cleaning and Maintenance

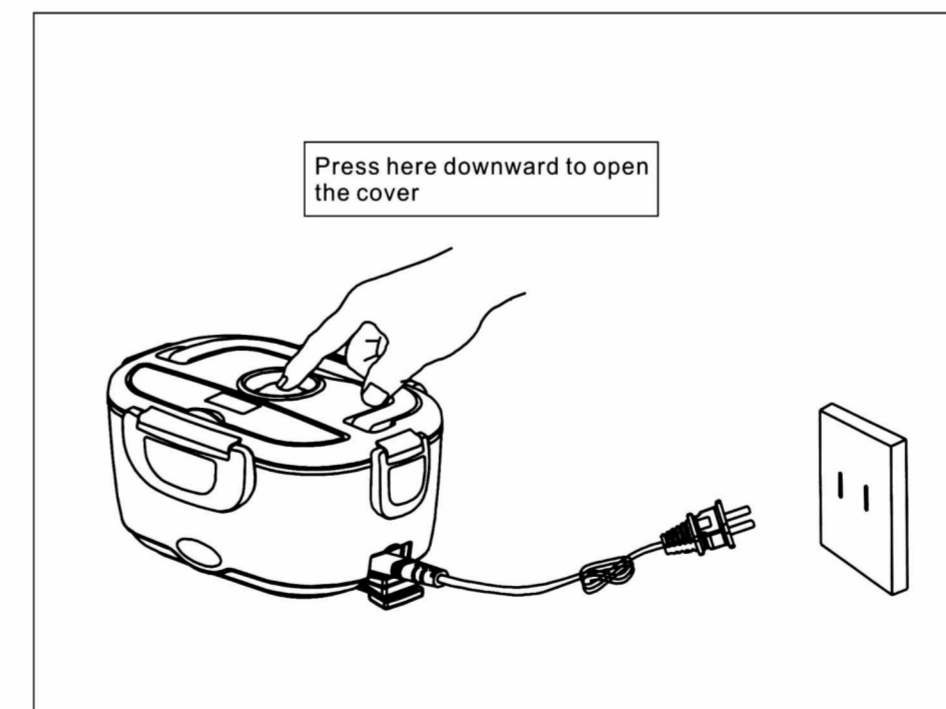
- Don't forget to unplug after using the lunch box.
- Please clean the lunch box after use in order not to produce any peculiar smell.
- Do not use thinner, gasoline, cleanser, hard brush, or stainless steel scrub.
- To clean soak containers in warm soapy water or use a soft warm cloth to clean the surface or part.
- If the lunch box will not be in use for a long time, please clean it and put it into the packaging box and place in a well ventilated dry place.
- If there exists any problems with the lunch box, please send it to our designated maintenance service department to repair. Do not repair it by yourself.

### Maintenance Service and Warranty

	Fault	Cause	Solution
1	The indicator is not lit when switched on	a. Haven't plug in b. Power cord damaged	Check the socket, power cord and plug in again
2	The indicator is lit when switched off	a. The heating element is damaged	Send to the designated department for maintenance
3	The temperature is very low after heating	a. Heating time is too short b. Both the temperature of the environment and the food is too low.	Extend the heating time

### Special Safety Cautions




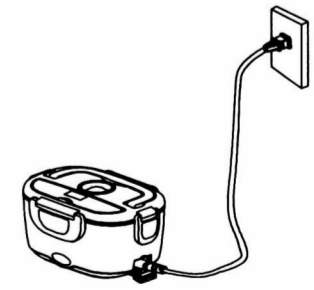
- When using this product, first open the steam vent cover. If the steam vent cover is not open, the steam pressure will become stronger and will damage the product and cause parts to deform.



- Do not put the product into the sterilizing cabinet for disinfection.
- Do not put the product into the microwave oven to heat.
- Do not cool or freeze the product in refrigerator.
- Do not soak the product into water when washing and cleaning.

### Operating Direction

#### Heating Soup

- Put the soup into the container. 
- Lock the cover downward. 
- Open the rubber stopper and plug in. 
- After plugging in the lunch box the indicator light will turn on. Attention: Heating time depends on the temperature of the soup and the environment.
  - Under 77°C circumstances and the soup has not been refrigerated, heating about 30 minutes will be suitable for eating.
  - When the temperature is low and the food has been refrigerated, heating time should be longer.
  - Unplug the power cord before starting to eat.

#### Directions

Please read the instructions carefully, and operate according to the following steps: Take out the multi-functional electric lunch box, remove the packaging and wash all the parts with warm water and soap, wipe dry and set aside. DO NOT IMMERSE WHOLE DEVICE IN WATER.