



Get Me Cool Now
Portable Air Conditioner
User's Manual
GMCN100 SERIES



Questions or Concerns? Contact technical support department at 1.877.645.0299, 8 a.m. - 5 p.m., EST, Monday - Friday or www.AmericanComfort.com Please have your model & serial number ready.

Table of Contents

Safety Information.....	1
Specifications.....	2
Parts List.....	3
Accessories.....	3
Control Panel and Remote Control.....	4
Installation Instructions.....	5
Operation Instructions.....	6
Drainage & Maintenance Instructions.....	7
Troubleshooting.....	8
Warranty.....	9

Safety Information

Please read and understand this entire manual before attempting to assemble, operate, or install the product. This unit is intended for residential use only.

IMPORTANT SAFETY INSTRUCTIONS

WARNING: POTENTIAL ELECTRICAL HAZARD IF NOT ADHERED TO. When using electrical appliances, basic precautions should always be followed to reduce the risk of fire, electric shock, and injury to persons, including the following:

- Extreme caution is necessary when the unit is used by or near children, invalids, pets, or when the unit is left operating unattended.
- Always unplug the unit when not in use.
- Do not operate the unit with a damaged cord or plug or after the fan malfunctions, has been dropped, or damaged in any manner. Contact the manufacturer for resolution options.
- Do not use outdoors. Exposure to outdoor elements such as rain, snow, sun, wind, or extreme temperatures may cause the unit to become a safety hazard.
- This unit is not intended for use in bathrooms, laundry areas, and similar indoor locations, nor any locations that use GFCI outlets.
- Never place the unit where it may fall into a bathtub or other water receptacles.
- Do not run the cord under carpet. Do not cover the cord with throw rugs, runners, or similar coverings. Arrange the cord away from traffic areas and where it will not be tripped over.
- To disconnect the unit, first turn the power button to the OFF position and then remove the plug from the wall outlet.
- Do not allow foreign objects to enter or block any ventilation or exhaust opening as this may cause electric shock, fire, or damage the unit.
- This unit has hot and arcing or sparking parts inside. Do not use it in areas where gasoline, paint, or flammable liquids are used or stored, nor use flammable solvents to clean the fan. Keep the unit dry at all times.
- Use this unit only as described in this manual. Any other use not recommended by the manufacturer may cause fire, electric shock, or injury to persons.
- Do not use abrasive solvents to clean the unit as it may cause damage to the finish or casing.
- The use of an extension cord is not recommended
- Should the unit stop working, first check the fuse/circuit breaker located in the power cord before contacting the manufacturer or a certified service agent.
- Keep the unit upright while transporting and storing
- When moving the air-conditioner, always turn it off and disconnect the power supply, and move it slowly.

Notes:

- If any parts are damaged please call the manufacture at 1.877.645.0299
- The power cord must be firmly grounded.
- If power cord is damaged, please turn off the unit and disconnect the power supply. It must be replaced from the dealer or a designated repair shop.

⚠ WARNING: It is normal for the power cord to feel warm to the touch. However, a loose fit between the outlet and the plug may cause overheating of the plug. If this occurs, try inserting the plug into a different outlet. Contact a qualified electrician to inspect the original outlet for damage.

Specifications

Model Number:	GMCN100 Series
BTU/hour:	9,000
Voltage Rating:	115v/60Hz
Power Consumption:	950 W
Refrigerant:	R410A
Fan Speeds:	2
Unit Size:	12.99" x 26.77" x 11.02"
Unit Weight:	46 lb
Square Feet:	Approximately 450 ft ²
Maximum Cooling Temp:	64°F / 16°C
Minimum Cooling Temp:	90°F / 31°C
Pints of dehumidification:	1.25L/hour
Noise Level:	64dB(A)

Important:

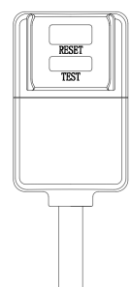
- The compressor will start approximately 3 minutes after the unit has been turned on (this will help prolong the life of the compressor). After switching the unit off, please wait at least 3 minutes before turning the unit back on.
- The compressor will switch off when the room temperature is lower than the set temperature. The fan will however, continue to work. When ambient temperature rises above the set temperature, the cooling will resume.

LCDI Plug Instruction

If you plug in the Air Conditioner, and there is no green light on the plug, Press the reset button on the LCDI plug. The green light should be on, indicating that the air conditioner is getting power from the electrical outlet.

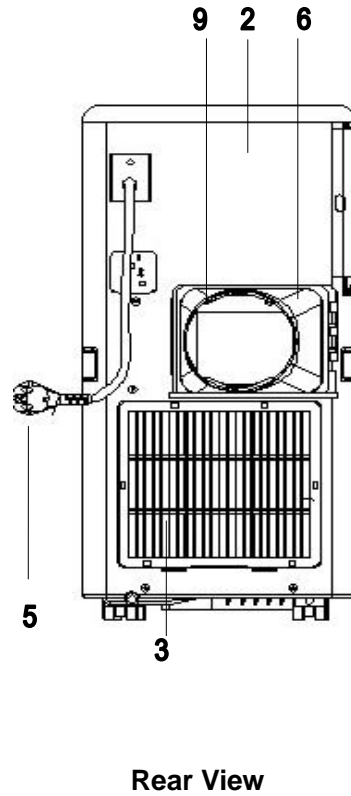
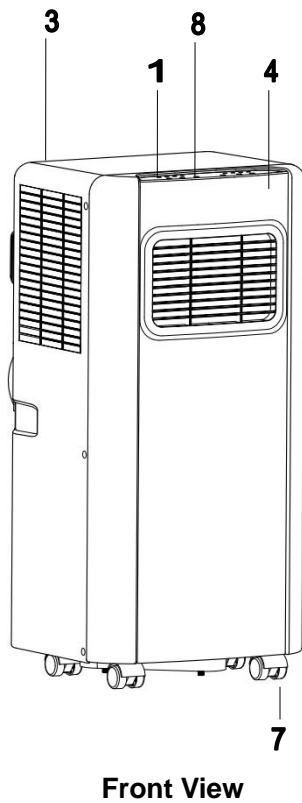
If the plug continues to trip (which is a USA national safety standard feature) and the green light goes off, the cord or plug may be damaged preventing you from resetting the unit. For your safety, contact a licensed electrician.

Figure 1



Parts List

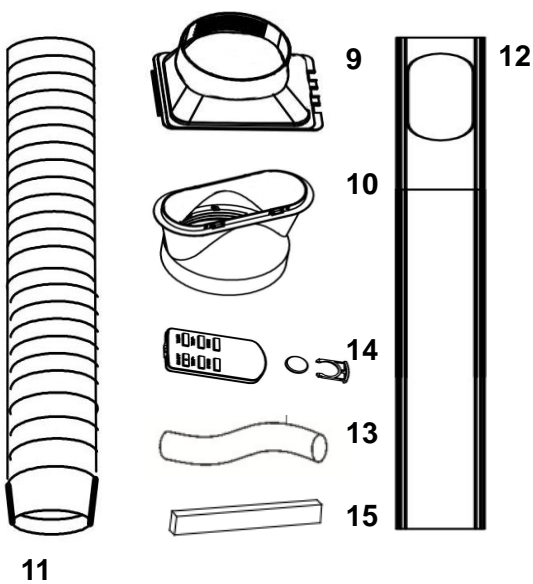
Figure 2



- 1. Control Panel
- 2. Rear Cover
- 3. Air Inlet
- 4. Front Cover
- 5. Power Cord
- 6. Exhaust Adaptor
- 7. Castor
- 8. Air Vent

Accessories

Figure 3



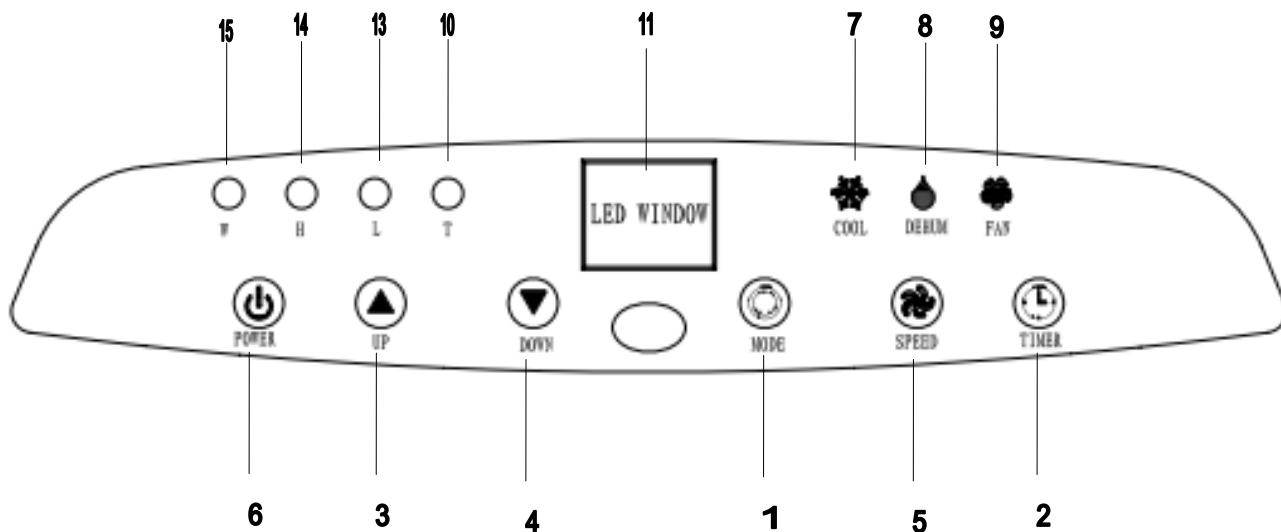
- 9. Exhaust hose adaptor – to connect the hose and the unit.
- 10. Outward Adaptor – to be inserted to the wall/window.
- 11. Flexible Exhaust hose – for venting the hot air.
- 12. Window Slide Bar – for filling the open window and has the opening for the outward adaptor
- 13. Drain Tube – for draining excess water
- 14. Remote Control
- 15. Foam Strip

Hose length: 1.5 Meters. The length of the hose is specifically designed according to the specifications of this product. Do not replace or extend it with any other hose as this could lead to the unit malfunctioning.

After unpacking the unit, please check whether all the above-mentioned accessories were included, and check their purposes in the installation in this manual.

Control Panel

Figure 4



- | | | |
|----------|--------------------------|---------------------------------|
| 1. Mode | 6. Power | 11. Display Window |
| 2. Timer | 7. Cooling Mode | 12. Receiver for Remote Control |
| 3. Up | 8. Dehumidification Mode | 13. Low Fan |
| 4. Down | 9. Fan Mode | 14. High Fan |
| 5. Fan | 10. Timer Indicator | 15. Water Full |

Remote Control

The air conditioner responds to all signals that are sent by the remote control. Remote control requires one CR2025 battery to operate.

Point the remote control towards the control panel of the unit and press the relevant button, the red LED on the remote control will flash whenever a button is pressed.



Figure 5

Installation Instructions

⚠ ATTENTION:

- Before you start, place the unit on a firm, level surface where there is a grounded 115 V/60 Hz power outlet nearby. Only operate in an upright position. Do not use an extension cord.
- Ensure you have space for air to flow around the unit, at least 30cm/12" from wall, curtains, draperies, or heat sources to insure adequate air circulation. Any blockage can lead to overheating of the air conditioner.
- Handle with care to prevent any kink or bend in the exhaust hose.
- The flexible exhaust hose can be extended from 12" to 60" for mounting. We recommend that you keep the hose as short as possible to minimize possible loss back in the room.

The unit is a portable air conditioner that may be moved from room to room.

Note: The window kit is only designed to be installed with sliding windows or doors. The window kit is not designed or to be used with casement style windows.

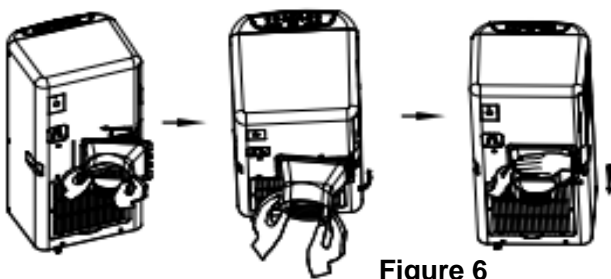


Figure 6

Assembling the Adaptor and Hose

- Insert the exhaust adaptor from left to right into the slot at the back of the unit.
- Push downward to lock the adaptor then spin in the threaded hose.

Installing the Outward Adaptor and Window Slide Bar

- Install and extend window slide bar to fit your window opening, either vertical or horizontal, depending on how the window opens. See Figure 7.
- Install the hose to the outward adaptor and snap the hose connector into the window slide bar opening as shown. Please make sure the hose is firmly attached to the connector that fits into window slide bar.

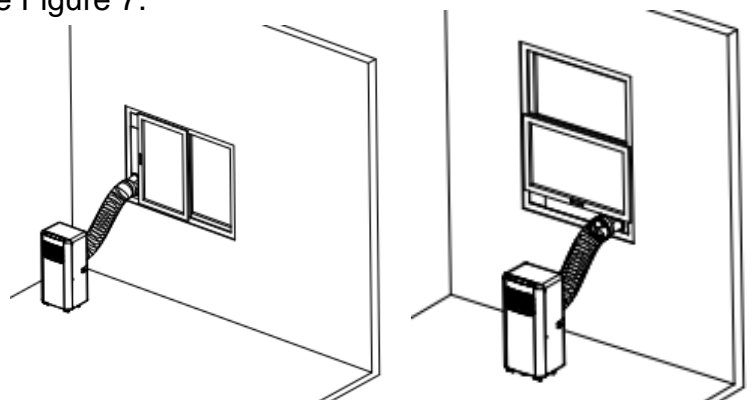


Figure 7

Installing directly through a wall/window

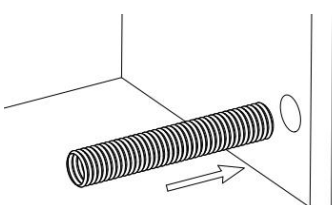


Figure 8

Cut a 130mm diameter hole in the wall or window, and then feed exhaust hose through the window or wall.

Operating Instructions

Mode

Press MODE button to select required working mode: DEHUMIDIFIER, COOLING or FAN. The corresponding LED will light up.

Cooling Instructions

To control the cooling temperature:

1. Press the “Mode” button until the “Cool” icon light is on.
2. Press the “UP” or “DOWN” button to select a desired cooling temperature. (62°F – 90°F / 16°C – 31°C)
3. Press the “Fan Speed” button to select fan speed. (High or Low)

Dehumidifying Instructions

To control the dehumidifying settings:

1. Press the “Mode” button until the “Dehumidify” icon light is on.
2. Select the actual ambient room temperature (please note that there is default tolerance of 2° between the room temperature measured by any thermometer in the house and the actual temperature)
3. Set the fan speed to LOW.

CAUTION:

- When using cooling and dehumidifying functions, let the unit run for at least 3 minutes before shutting it off or switching between functions.
- Make sure the power supply meets the requirements. AC115V, 60Hz
- Do not share one socket with other appliances.

Fan Instructions

To control the fan setting:

- Press the “Mode” button until the “FAN” icon light is on.
- Press the “FAN” button to select a desired fan speed. (HIGH or LOW)

Timer Instructions

Auto-On setting:

- When the air-conditioner is **OFF**, press the “Timer” button and select a desired Auto-On timer using the “UP” and “DOWN” buttons.
- The “Auto-ON Timer” is displayed on the LED panel.
- The Auto-On timer can be changed at any time in 0-24 hours.

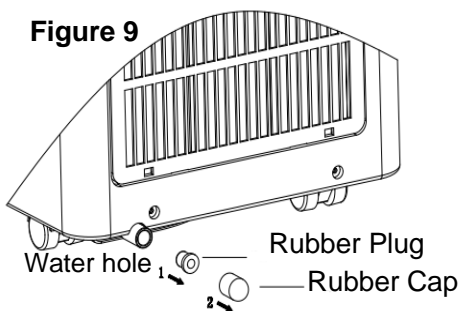
Auto-Off setting:

- When the air-conditioner is **ON**, press the “Timer” button and select a desired Auto-Off time using the “UP” and “DOWN” buttons.
- The “Auto-OFF Timer” is displayed on the LED panel.
- The Auto-Off timer can be changed at any time in 0-24 hours.

Note: For example, if you press the timer to '2', the unit will turn on or shut off automatically after 2 hours.

Drainage Instructions

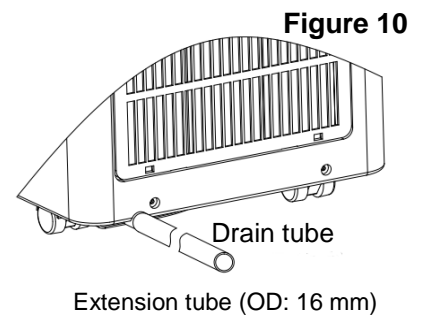
This unit is designed to Auto Drain, however under extreme humidity the unit may need to be drained manually.



This Air Conditioner has an inner water reservoir; inside the reservoir is a safety micro switch. When the reservoir is full the safety switch is activated and the “F” Light will turn on, indicating that the unit needs to be drained manually through the water hole on the back of the unit.

To manually drain the unit, turn the unit off and get a pan or tray. Place it under the water hole.

Remove the plug and the cap. Let the water drain into the pan or tray. When the unit has fully drained replace the plug and turn your unit back on.



Please note:

- The drain tube must be at or below the outlet level.
- Water Full indicator “F” will not function in this mode of drainage.

If you want to extend the water tube, you can connect it with another tube (OD: 16mm) with a proper connector.

Maintenance Instructions

⚠ ATTENTION:

- 1) Before cleaning, be sure to turn the unit off and disconnect it from the electric outlet.
- 2) Do not use gasoline or other chemicals to clean the unit.
- 3) Do not submerge the unit to clean it.
- 4) Dry thoroughly before replacing the filter in the unit.
- 5) Never operate the unit without the filter.
- 6) If the air conditioner is damaged, please contact the dealer or repair shop.

To maximize the efficiency of the air conditioners, please clean regularly.

Cleaning the housing

To clean the surface of the unit use a gentle detergent and damp cloth, and then wipe it dry with a soft clean cloth.

Cleaning the filter

The air filter should be cleaned at least once every two weeks, to prevent it from becoming clogged with dust/dirt. Open the air inlet grille on the back of the unit and take out the air filter. Clean the air filter with gentle detergent in lukewarm water. The filter should be left to dry, out of direct sunlight. Put the air filter into the inlet grill on the back of the unit; replace the components as they were

Troubleshooting

Problem	Possible Causes	Corrective Action
1. The unit does not start when pressing on/off button	- Water full indicator lamp blinks, ("F") and water tank is full.	Drain the water from the water tank.
	- Room temperature is higher than the set temperature.	Reset the temperature
	- Room temperature is lower than the setting temperature	Reset the temperature
2. Not cool enough	- The doors or windows are not closed.	Make sure all the windows and doors are closed.
	- There are heat sources inside the room.	Remove the heat sources if possible
	- Exhaust air hose is not connected or blocked.	Connect or clean the exhaust air hose.
	- Temperature setting is too high.	Reset the temperature
	- Air inlet is blocked.	Clean the air inlet.
3. The unit is noisy/loud	- The ground is not level or not flat enough	Place the unit on a flat, level ground if possible
	- The sound comes from the flowing of the refrigerant inside the air conditioner	It is normal.
4. E0 Code	- Room temperature sensor failed	Replace room temperature sensor (the unit can also work without replacement.)
5. E2 Code	- Water tank full. ("F")	Please drain the water tank.

One Year Limited Warranty

American Comfort Worldwide LLC (“ACW”) warrants this unit to the original retail purchaser (“Purchaser”) purchasing only in the 48 Contiguous States, for one year from the date of purchase, against defects in material and workmanship under normal use and service. Should your unit prove defective within one year from the date of purchase, please follow our return procedure to return the defective unit. Within the first 30 days, ACW is responsible for the freight cost to and from our authorized service center for all units with an ACW authorized RMA. After 30 days and up to life of warranty (12 months), the customer is responsible for freight costs to and from our authorized service centers.

ACW’s sole obligation under this warranty is to replace, or at ACW’s discretion, to repair, free of charge, all defective parts, for a period of one (1) year from date of original purchase. All replacement parts and units will be new, remanufactured, or refurbished. ANY IMPLIED WARRANTY OF MERCHANTABILITY IS SIMILARLY LIMITED TO ONE (1) YEAR FROM DATE OF ORIGINAL PURCHASE AND NO ACTION BASED UPON ANY IMPLIED WARRANTY OF MERCHANTABILITY OR OTHERWISE MAY BE COMMENCED AFTER EXPIRATION OF ONE (1) YEAR FROM DATE OF ORIGINAL RETAIL PURCHASE. Some states do not allow limitations on how long an implied warranty lasts, so the above limitation may not apply to you. Proof of Purchase (i.e. copy of receipt) must be sent with the unit.

The provisions of this warranty shall not apply to any product which in ACW’s judgment has been (1) subject to misuse or neglect.(2) damaged in an accident.(3) used for a purpose for which it was not designed, or (4) repaired or altered in any way that adversely affected its performance or reliability. Do not attempt to “open unit”, except for filter replacement. Opening unit will void manufacturer’s warranty.

THIS WARRANTY DOES NOT COVER:

- Damage, accidental or otherwise, to the unit while in the possession of the consumer not caused by a defect in material or workmanship.
- Damage caused by consumer misuse, tampering, or failure to follow the care and special handling provisions in the instructions.
- Damage to the finish of the case, or other appearance parts caused by the wear.
- Damage caused by repairs or alterations of the unit by anyone other than those authorized by American Comfort Worldwide.
- Freight and Insurance cost for the warranty service beyond 30 days from date of purchase up to life of warranty (12 months).
- This warranty covers only new products purchased from our authorized dealers or retailers. It does not cover used, salvaged, or refurbished products.
- To obtain warranty service, the defective product or part must be shipped or delivered to: American Comfort®, the Manufacturer. If warranty applies under ACW’s approved terms, all Shipping charges and insurance are covered by purchaser.

AMERICAN COMFORT WORLDWIDE NEITHER ASSUMES NOR AUTHORIZES ANY PERSON TO ASSUME FOR IT ANY OTHER (LIABILITY IN CONNECTION WITH ITS PRODUCTS, THERE

ARE NO WARRANTIES WHICH EXTEND BEYOND THE DESCRIPTION ON THE FACE HEREOF. NO RESPONSIBILITY IS ASSUMED FOR INCIDENTAL OR CONSEQUENTIAL DAMAGES THAT MAY RESULT FROM THE USE OF AN ACW PRODUCT, NOR FOR THE DAMAGES DUE TO ACCIDENT, ABUSE, LACK OF RESPONSIBLE CARE, THE AFFIXING OF ANY UNAUTHORIZED ATTACHMENT, LOSS OF PARTS, OR USE AT A VOLTAGE OTHER THAN SPECIFIED. Some states do not allow the exclusion of limitation of incidental or consequential damages, so these limitations may not apply to you. ACW disclaims all liabilities for defects or damages caused by use of replacement parts obtained from or by service at any service center other than American Comfort Worldwide, the Manufacturer.

This warranty gives you specific legal rights, and you may also have other rights which vary from state to state.

Please keep this warranty for your records, along with a copy of the original receipt. DO NOT return it.

Visit www.AmericanComfort.com/Register to register your unit.