

MARTHA
LIVING STEWART™

small project paints



D247043-01

exclusively at



Big effects come in
small packages.



I get such satisfaction when I am able to give something a new look.

The easiest way to do this is often with a simple coat of paint.

Martha Stewart Living™ project paints are perfect for these kinds of small household makeovers. They are available in convenient 10-ounce jars and come in a wide range of colors and special finishes, so you can transform objects, furniture, and even accent walls with shine, sparkle, and texture. You'll love the way my project paints

help you refresh your favorite things!

Martha Stewart



Use the Color Key symbols to coordinate your paint with the rest of our Martha Stewart Living™ products.



MARTHA STEWART LIVING™ PAINT EXCLUSIVELY AT THE HOME DEPOT

metallic glaze & paint

Metallic glazes and paints are ideal for walls, furniture, and accent pieces. While both products provide a metallic gleam, the glaze delivers a translucent finish.

SUITABLE SURFACES

- Wallboard
- Wood
- Ceramic bisque
- Metal
- Terra cotta
- Canvas

BEFORE YOU START

- Be sure your surface is clean and dry

PROJECT DIFFICULTY

- Easy: Applies in one coat

TOOLS AND MATERIALS

- Brush or sponge



METALLIC GLAZE



COPPER PENNY

MERCURY

MEDALLION



MUSCOVADO

BLACK COFFEE



BEFORE

AFTER
Copper Penny
Metallic Glaze



BEFORE



AFTER
Moulding: Polished Silver Metallic Paint
Chair: Thundercloud Metallic Paint

METALLIC PAINT



THUNDERCLOUD



POLISHED SILVER



CAST BRONZE



COPPER RED



GOLDEN PEARL



VINTAGE GOLD



BEFORE

AFTER
Pyrite and
Brownstone
Brick

textured metallic

Spreadable paints with metallic flakes create a shimmering, iron-like finish.

SUITABLE SURFACES

- Wood
- Resin
- Plaster
- Papier-mâché
- Ceramic
- Plastic
- Paper

BEFORE YOU START

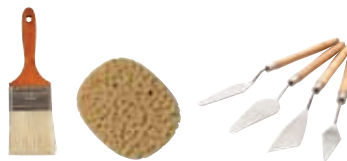
- Be sure your surface is clean and dry

PROJECT DIFFICULTY

- Easy: Applies in one coat

TOOLS AND MATERIALS

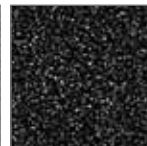
- Brush, sponge, or palette knife (depending on project)



PYRITE



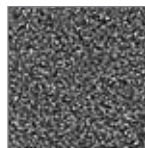
HARD FROST



LAMPBLACK



BROWNSTONE
BRICK



ANCHOR GRAY

crackle

When applied in conjunction with primer/sealer, these paints create a weathered, randomly cracked finish.

SUITABLE SURFACES

- Wood
- Ceramic bisque
- Foam core
- Medium density fiberboard (MDF)
- Metal
- Terra cotta
- Wallboard

BEFORE YOU START

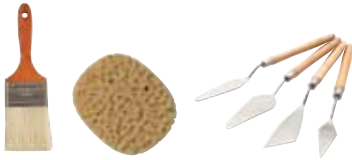
- Be sure your surface is clean and dry

PROJECT DIFFICULTY

- Medium: Applies in two or more coats

TOOLS AND MATERIALS

- Brush, sponge, trowel, putty knife, or palette knife



PRIMER/SEALER

- Must be used with all crackle paints



WEeping WILLOW



OAT



SANDBAR



REDWOOD



PAINTABLE WHITE



BEFORE

AFTER
Weeping Willow



INSTRUCTIONS

1. Cover entire surface with Martha Stewart Living™ primer/sealer. Allow 30 minutes drying time.
2. Apply your preferred crackle color with a putty knife. Although it looks smooth while wet, the paint will crackle as it dries; smaller cracks will appear where the paint is thinner, larger cracks will appear where it's thicker.
3. Once the paint is completely dry (allow 90 minutes for thin layers, 2-3 hours for thick layers), you may wish to gently sand edges for a smoother, more uniform look.

ANTIQUING INSTRUCTIONS

1. Apply a coat of primer/sealer on top of the crackle layer.
2. Once primer/sealer is dry (30 minutes), use a brush to apply another layer of glaze or stain.
3. Wipe off to remove excess; the surfaces will be tinted and the crevices will retain the color.

Note: Use an appropriately sized brush for most surfaces; for a rough texture, apply by dabbing the surface with a sponge; use a trowel, putty knife, or palette knife to cover large areas.



BEFORE

AFTER
Gravel



textured terra cotta

Add charm and texture to any project.
This paint creates the look of warm,
rustic clay pottery with a fine sandy grit.

SUITABLE SURFACES

- Wood
- Ceramic bisque
- Foam core
- Medium density fiberboard (MDF)
- Metal
- Terra cotta
- Wallboard

BEFORE YOU START

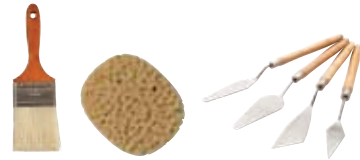
- Be sure your surface
is clean and dry

PROJECT DIFFICULTY

- Easy: Applies in one coat

TOOLS AND MATERIALS

- Brush, sponge, or palette knife



GRAVEL



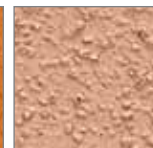
BISQUE



POTTING SOIL



PAPRIKA



TAMARIND



PAINTABLE

glitter

This paint brings an element of fun to your décor. Its ultra-fine particles reflect light for a brilliant, sparkling surface.

SUITABLE SURFACES

- Wood
- Resin
- Plaster
- Papier-mâché
- Ceramic
- Plastic
- Paper

BEFORE YOU START

- Be sure your surface is clean and dry

PROJECT DIFFICULTY

- Easy: Applies in one coat

TOOLS AND MATERIALS

- Brush, sponge, palette knife, or roller



AQUARIUM BLUE

PURPLE CROCUS

PINK LUSTER



GOLD DUST

POMEGRANATE RED

SILVER SHIMMER



BEFORE

AFTER
Aquarium Blue



INSTRUCTIONS

1. Since glitter project paint dries to a slightly tinted, nearly clear finish, it's important to begin by applying a base layer of paint in a color that complements your glitter project paint. Your local Home Depot has a wide range of 8 oz. paint options to choose from.
2. Once the base layer has dried fully (60–90 minutes), apply a coat of glitter project paint. You can enhance the glitter effect by adding multiple coats.

Note: Use an appropriately sized brush for most surfaces; for a rough texture, apply by dabbing the surface with a sponge; use a trowel, putty knife, or palette knife to cover large areas.



precious metals



potter's clay



lightstrokes



more specialty finishes

In addition to the 10 oz. Project Paints in this guide, Martha Stewart Living™ offers three unique Specialty Finishes, available in 1-quart and 1-gallon sizes. Transform a plain wall while adding dimension, texture, and light to make the whole room look professionally painted. Creating a truly distinctive home has never been easier.

Go to homedepot.com/marthastewartlivingpaint to learn more.



Create custom finishes perfect for any mood or room. This 8-piece specialty kit includes tools and techniques for adding an extra touch of elegance and personality to your home.

Martha Stewart Living™ and the Martha Stewart Logo™ are trademarks of Martha Stewart Living Omnimedia, Inc. Copyright 2011 Martha Stewart Living Omnimedia, Inc. All rights reserved. Distributed by The Home Depot U.S.A., Inc. 2455 Paces Ferry Rd., N.W., Atlanta, GA 30339. © 2011 Homer TLC, Inc. All rights reserved.

